

Form 874-9 Revised May, 1918
 U. S. Department of Agriculture
 FOREST SERVICE

R-21

Chippewa NATIONAL FOREST
 CORNERS OF THE PUBLIC SURVEY

T. 59 N R. 27 W 4 Mer.

5 Corner common to Sections
23, 24, 25, and 26

Corner consists of a Spruce Post (~~not~~) in place
 State condition Good

Dimensions above ground 26 inches
 Sketch grooves, letters, figures, or notches, on proper face or edge.

CARDINAL POSITION

DIAGONAL POSITION

--	--	--	--

S	S	S	S
26	25	24	23

N W S E

NW SW SE NE

Mound of _____ is located _____

Pits are located _____

Sketch markings of Bearing Trees (or Rocks) in proper box and fill blanks below, giving bearings from Corner to Trees and Distances in Links.

S	T59N	T59N	S
25	R27W	R27W	24
	S24	S23	
BT	BT	BT	BT

Species Spruce Aspen Spruce Spruce
 Diameter 5" 12" 20" 10"
 Bearing S57E N62E N33W N23E
 Distance 0.23 0.28 0.55 0.52

Do you believe this to be a genuine Land Office Corner? Yes

If not, why? _____

Arnold Larson
 (Signature)

1-11-35
 (Date)

C C C Enrollee
 (Title)

Compass set North

Fence leads to corner from S & E

Corner again.

Give any further facts which will aid in finding this

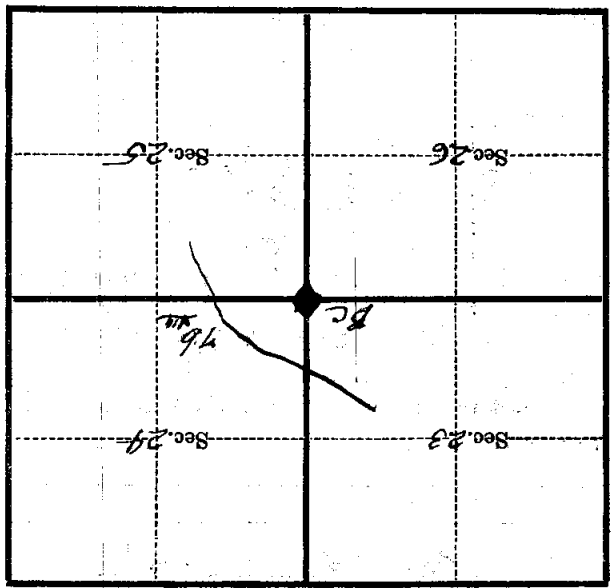
0.24 chains distant.

from which this corner bears S 0°

side of tree

tree 6 inches diameter, on the N

Metal Location Poster is on a Balsam



(Make sketch of topography near Corner)

T. 59N R. 27W 4 Mer. R-21

U. S. Department of Agriculture
FOREST SERVICE

R-21

Chippewa NATIONAL FOREST

CORNERS OF THE PUBLIC SURVEY

T. 59N R. 27W 4th Mer.

Section Corner common to Sections
23, 24, 25, and 26

Corner consists of a Spruce P (not) in place
State condition good

Dimensions above ground 26 inches

Sketch grooves, letters, figures, or notches, on proper face or edge.

CARDINAL POSITION

DIAGONAL POSITION

--	--	--	--

N W S E

S	S	S	S
26	25	24	23

NW SW SE NE

Mound of _____ is located _____

Pits are located _____

Sketch markings of Bearing Trees (or Rocks) in proper box and fill blanks below, giving bearings from Corner to Trees and Distances in Links.

S 25	T59N R27W S24	T59N R27W S23	S 24
BT	BT	BT	BT

Species Spruce Aspen Spruce Spruce

Diameter 5 12 20 10

Bearing S57E N62E N32W N23E

Distance 23 28 55 52

Do you believe this to be a genuine Land Office Corner? Yes

If not, why? _____

Arnold Larson

(Signature)

1-11-35

(Date)

C. C. C. Enalley

(Title)

Compass set 7° W

Fence leads to Corner from S and E

Corner again.

Give any further facts which will aid in finding this

chains distant.

0.24

from which this Corner bears

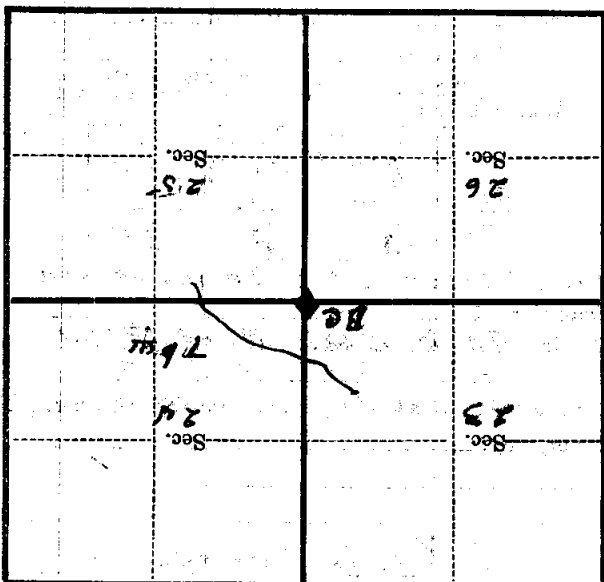
S 0°

side of

Tree

tree 5 inches diameter, on the N

Metal Location Poster is on a B & S G.M.



(Make sketch of topography near Corner)

T. 57 N. R. 27 W. 11th Mer. R-21

U. S. Department of Agriculture

FOREST SERVICE

Previously Graded
 Chippewa NATIONAL FOREST R 21

CORNERS OF THE PUBLIC SURVEY

T. 59N R. 27W 4th Mer.

Section Corner common to Sections

23, 24, 25, and 26

Corner consists of a Spruce P (not) in place

State condition Good

Dimensions above ground 26 inches

Sketch grooves, letters, figures, or notches, on proper face or edge.

CARDINAL POSITION

DIAGONAL POSITION

--	--	--	--

N W S E

S	S	S	S
26	25	24	23

NW SW SE NE

Mound of _____ is located _____

Pits are located _____

Sketch markings of Bearing Trees (or Rocks) in proper box and fill blanks below, giving bearings from Corner to Trees and Distances in Links.

S 25	T59N R27W S24	T59N R27W S23	S 24
BT	BT	BT	BT

Species Spruce Aspen Spruce Spruce

Diameter 5 12 20 10

Bearing S57°E N62°E N73°W N23°E

Distance 23 28 55 52

Do you believe this to be a genuine Land Office Corner? Yes

If not, why? _____

Gerald Larson

(Signature)

1-11-35
(Date)

C. C. C. Envallee
(Title)

Compass set 10 W

Fence leads to corner
from S and E

Corner again.

Give any further facts which will aid in finding this

chains distant.

from which this corner bears

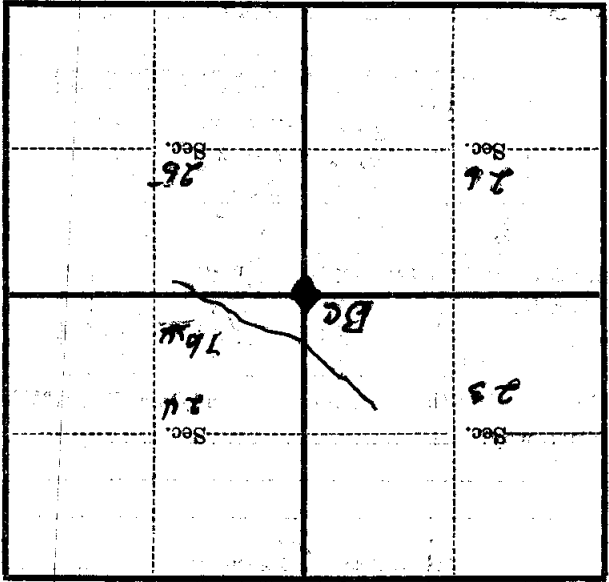
50°

side of Tree

tree 6 inches diameter, on the

N

Metal Location Poster is on a Balsam



(Make sketch of topography near corner)

T. 59 N R. 27 W 4th Mer. R-21