

U. S. Department of Agriculture
FOREST SERVICE

E-17

Chippewa NATIONAL FOREST
CORNERS OF THE PUBLIC SURVEY

T. 59N R. 27W 42 Mer.

5 Corner common to Sections
2, 3, 12, and 11

Corner consists of a _____ (not) in place
State condition _____

Dimensions above ground _____ inches

Sketch grooves, letters, figures, or notches, on proper face or edge.

CARDINAL POSITION

DIAGONAL POSITION

--	--	--	--

N W S E

--	--	--	--

NW SW SE NE

Mound of _____ is located _____

Pits are located _____

Sketch markings of Bearing Trees (or Rocks) in proper box and fill blanks below, giving bearings from Corner to Trees and Distances in Links.

75N
R 27W
511

--

--

--

BT

--

--

--

Species Aspen

Diameter 14"

Bearing S 73 E

Distance 0.72

Do you believe this to be a genuine Land Office Corner? Yes

If not, why? _____

Paul Nelson
(Signature)

2-14-35
(Date)

see Enroller
(Title)

Corner again.

Give any further facts which will aid in finding this

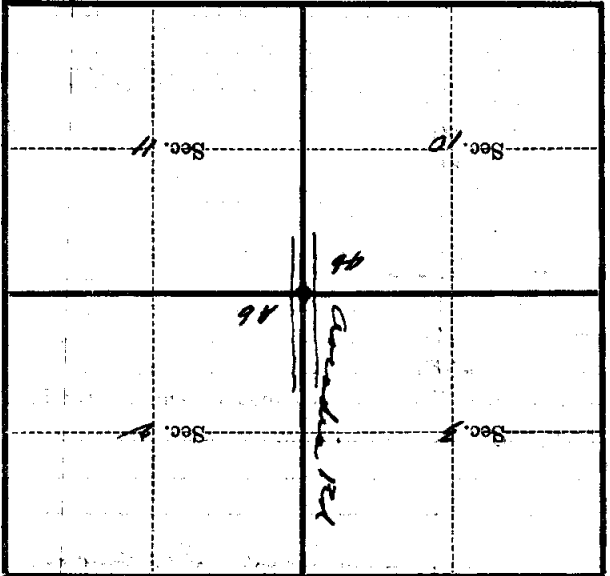
0.79 chains distant.

from which this Corner bears N 60 E

side of

tree 8 inches diameter, on the *base*

Metal Location Poster is on a *post*



(Make sketch of topography near Corner)

T. 58N R. 27W E-17 Mer.

U. S. Department of Agriculture
FOREST SERVICE

E-17

Chippewa NATIONAL FOREST
CORNERS OF THE PUBLIC SURVEY

T. 59 N R. 27 W 92 Mer.

5 Corner common to Sections
2, 3, 10, and 11

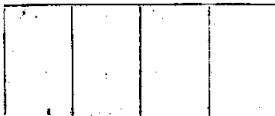
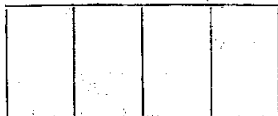
Corner consists of a stone post (not) in place
State condition

Dimensions above ground _____ inches

Sketch grooves, letters, figures, or notches, on proper face or edge.

CARDINAL POSITION

DIAGONAL POSITION



Mound of _____ is located _____

Pits are located _____

Sketch markings of Bearing Trees (or Rocks) in proper box and fill blanks below, giving bearings from Corner to Trees and Distances in Links.



Species holmgreen

Diameter 18"

Bearing S. 73 E

Distance 0.72

Do you believe this to be a genuine Land Office Corner? Yes

If not, why? _____

Paul Ireland
(Signature)

2-19-25
(Date)

CCC Enroller
(Title)

Corner again.

Give any further facts which will aid in finding this

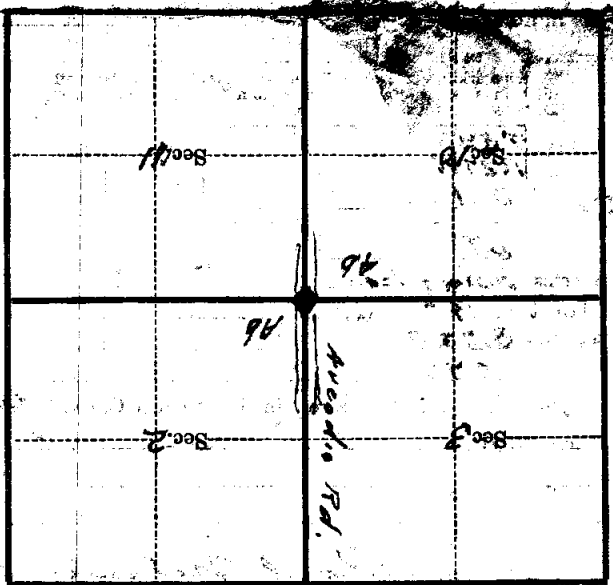
chains distant. 0.79

from which this Corner bears N 60 E

side of N.C.S.

tree 8 inches diameter, on the NE

Metal Location Poster is on a Johnson



(Masks sketch of topography near Corner)

U. S. Department of Agriculture

FOREST SERVICE

Posted

Chippewa NATIONAL FOREST *E17*

CORNERS OF THE PUBLIC SURVEY

T. *59N* R. *27W* *4th* Mer.

5 Corner common to Sections

2, 3, 10, and 11

Corner consists of a _____ (not) in place

State condition _____

Dimensions above ground _____ inches

Sketch grooves, letters, figures, or notches, on proper face or edge.

CARDINAL POSITION

DIAGONAL POSITION

--	--	--	--

--	--	--	--

N W S E

NW SW SE NE

Mound of _____ is located _____

Pits are located _____

Sketch markings of Bearing Trees (or Rocks) in proper box and fill blanks below, giving bearings from Corner to Trees and Distances in Links.

<i>T59N</i> <i>R27W</i> <i>5W</i>			
<i>BT</i>			

Species *Palmer* _____

Diameter *14"* _____

Bearing *S72E* _____

Distance *0.72* _____

Do you believe this to be a genuine Land Office Corner? *yes*

If not, why? _____

Paul Nelson
(Signature)

2-14-35
(Date)

ccc Envalles
(Title)

Corner again.

Give any further facts which will aid in finding this

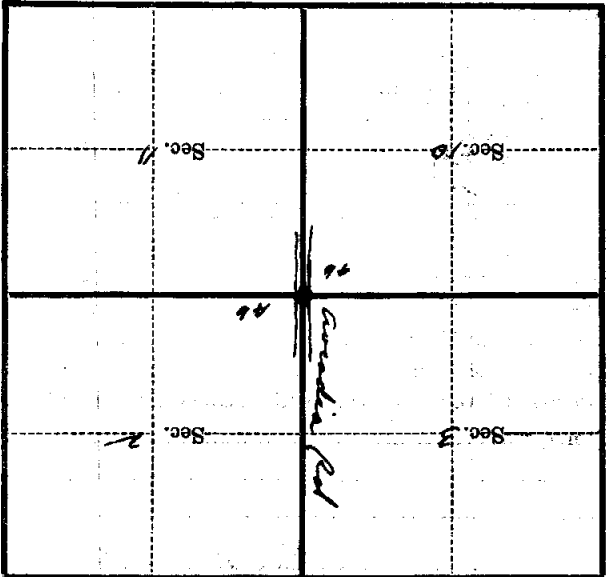
0.79 chains distant.

from which this Corner bears N 60 E

side of ~~Tree~~

tree 8 inches diameter, on the NE

Metal Location Poster is on a *Bolton*



(Make sketch of topography near Corner)

T. 59 N. R. 27 W. 4 1/2 E-17 Mer.