

U. S. Department of Agriculture  
FOREST SERVICE

61-7

*Chippewa* NATIONAL FOREST

CORNERS OF THE PUBLIC SURVEY

T. 59N R. 27W 4 Mer.

1/4 Corner common to Sections

141, and 135  
Corner consists of a Wood stake (not) in place

State condition Good

Dimensions above ground 3.6 inches

Sketch grooves, letters, figures, or notches, on proper face or edge.

CARDINAL POSITION

DIAGONAL POSITION

	<u>1/4</u>	<u>1/4</u>	
	<u>S</u>	<u>S</u>	
	<u>15</u>	<u>14</u>	

N W S E


NW SW SE NE

Mound of \_\_\_\_\_ is located \_\_\_\_\_

Pits are located \_\_\_\_\_

Sketch markings of Bearing Trees (or Rocks) in proper box and fill blanks below, giving bearings from Corner to Trees and Distances in Links.

<u>1/4 S</u> <u>15</u>	<u>1/4 S</u> <u>14</u>		
<u>BT</u>	<u>BT</u>		

Species old stump fine stump

Diameter 14" 12"

Bearing S 70° W N 71° E

Distance .10 ch .08 ch

Do you believe this to be a genuine Land Office Corner? yes

If not, why? \_\_\_\_\_

Donald Poole

(Signature)

Jan 10 '35

(Date)

C. C. C. Curran

(Title)

Corner again.  
Straight S from end  
of Skalo Road about 15 ft  
of large spruce tree  
compare lot at N 70 W

Give any further facts which will aid in finding this

0.20 chains distant

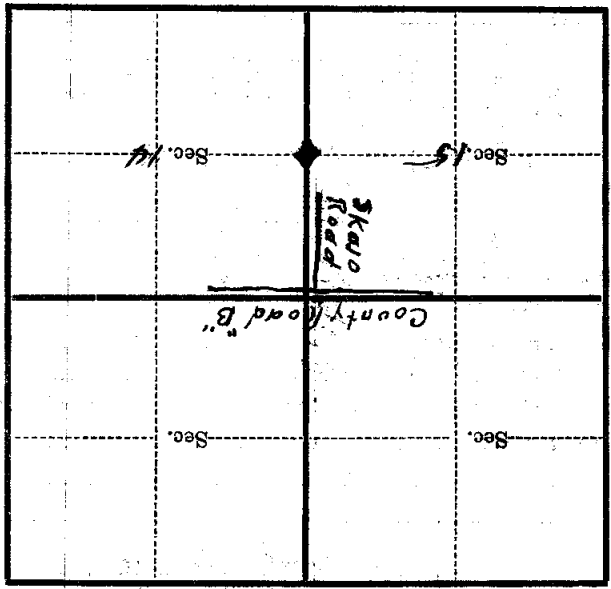
from which this Corner bears

N 50 W

side of Tree

tree 6 inches diameter, on the

Metal Location Poster is on a Spruce NW



(Make sketch of topography near Corner)

T. 59N R. 27W 4 Mer. 4-11

**U. S. Department of Agriculture**  
**FOREST SERVICE**

1-17

*Chippewa* NATIONAL FOREST  
**CORNERS OF THE PUBLIC SURVEY**

T. 59 N R. 27 W 4 Mer.

1/4 Corner common to Sections  
....., ....., 14, and 15

Corner consists of a Weed post (~~not~~) in placeState condition GoodDimensions above ground 36 inches

Sketch grooves, letters, figures, or notches, on proper face or edge.

CARDINAL POSITION

DIAGONAL POSITION

	<u>1/4</u>	<u>1/4</u>	
	<u>5</u>	<u>5</u>	
	<u>15</u>	<u>14</u>	

N W S E


NW SW SE NE

Mound of ..... is located .....

Pits are located .....

Sketch markings of Bearing Trees (or Rocks) in proper box and fill blanks below, giving bearings from Corner to Trees and Distances in Links.

<u>1/4</u> <u>5</u> <u>15</u>	<u>1/4</u> <u>5</u> <u>14</u>		
<u>BT</u>	<u>BT</u>		

Species Old stump Pine (stump)Diameter 14" 12"Bearing S70W N71EDistance 0.10 0.86Do you believe this to be a genuine Land Office Corner? Yes

If not, why? .....

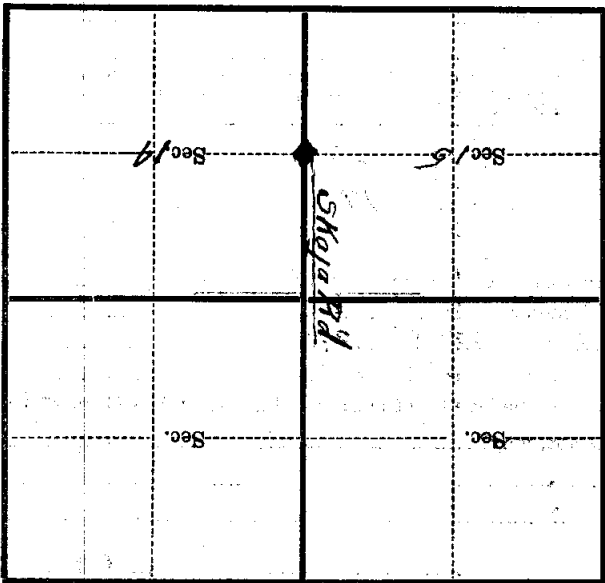
Donald Peale  
(Signature)

1-10-35  
(Date)

C.C.C. Enrollee  
(Title)

Corner again.  
 Straight 5 from end of  
 Skaja road abt 15 LK  
 E of large spruce tree  
 Compass set at N70W

Give any further facts which will aid in finding this  
 0.20 chains distant.  
 from which this Corner bears  
 N 50 W  
 side of tree  
 tree 6 inches diameter, on the  
 NW  
 Metal Location Poster is on a spruce



(Make sketch of topography near Corner)

T. 59N R. 27W 4 Mer. 4 L-17

U. S. Department of Agriculture

FOREST SERVICE

*Chippewa* NATIONAL FOREST *Posted*

L 17

CORNERS OF THE PUBLIC SURVEY

T. *58 N* R. *27 W* *4* Mer.

*14* Corner common to Sections *14*, and *15*

Corner consists of a *wood stake* (not) in place  
State condition *good*

Dimensions above ground *36* inches

Sketch grooves, letters, figures, or notches, on proper face or edge.

CARDINAL POSITION

DIAGONAL POSITION

	<i>14</i>	<i>14</i>	
	<i>5</i>	<i>5</i>	
	<i>15</i>	<i>14</i>	


N W S E

NW SW SE NE

Mound of \_\_\_\_\_ is located \_\_\_\_\_

Pits are located \_\_\_\_\_

Sketch markings of Bearing Trees (or Rocks) in proper box and fill blanks below, giving bearings from Corner to Trees and Distances in Links.

<i>14</i>	<i>14</i>		
<i>5</i>	<i>5</i>		
<i>15</i>	<i>14</i>		
<i>BT</i>	<i>BT</i>		

Species *Old stump pine stump*

Diameter *14"* *12"*

Bearing *S 70 W* *N 71 E*

Distance *10 ch* *05 ch*

Do you believe this to be a genuine Land Office Corner? *Yes*

If not, why? \_\_\_\_\_

*Ronald Park*

(Signature)

*C. C. C. Ensell*

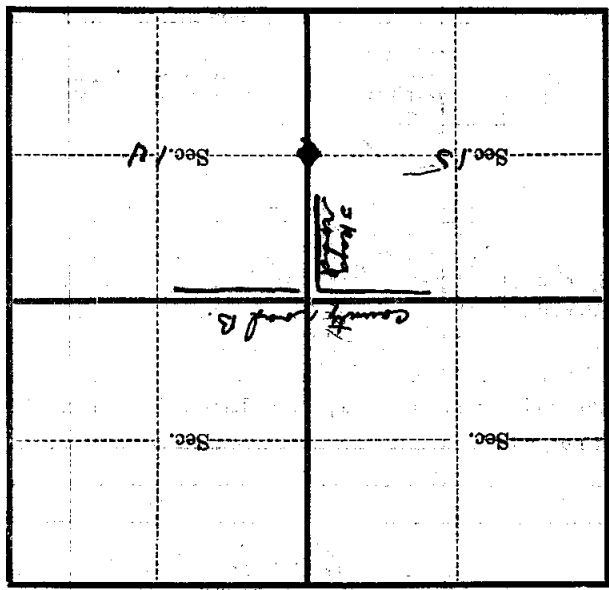
(Title)

*Jan 10 '35*

(Date)

Corner again.  
Straight S from end of  
Spurs road about 100 ft E of  
large spruce tree N 7° W  
compare with at N 7° W

Give any further facts which will aid in finding this  
Corner again.  
20 chains distant.  
from which this Corner bears  
N 50° W  
side of  
Tree  
tree 6 inches diameter, on the  
NW  
Spurs  
Metal Location Poster is on a



(Make sketch of topography near Corner)