

U. S. Department of Agriculture
FOREST SERVICE

E-F-11

----- NATIONAL FOREST

CORNERS OF THE PUBLIC SURVEYT. 59 R. 26 Mer.N.C. 100 1/2 Corner common to Sections-----, H, 9, and -----Corner consists of a Iron Pipe set (not) in placeState condition in concrete

Dimensions above ground ----- inches

Sketch grooves, letters, figures, or notches, on proper face or edge.

CARDINAL POSITION

DIAGONAL POSITION

--	--	--	--

N W S E

--	--	--	--

NW SW SE NE

Mound of ----- is located -----

----- Pits are located -----

Sketch markings of Bearing Trees (or Rocks) in proper box and fill blanks below, giving bearings from Corner to Trees and Distances in Links.

Species -----

Diameter Rocks - over

Bearing -----

Distance -----

Do you believe this to be a genuine Land Office Corner? -----

If not, why? No - Set by FrankWray - (Reg. Surv.) 2-11-49

R. W. Christopher (Signature)
(Wray, Ia)

(Signature)

D. S. P.

(Title)

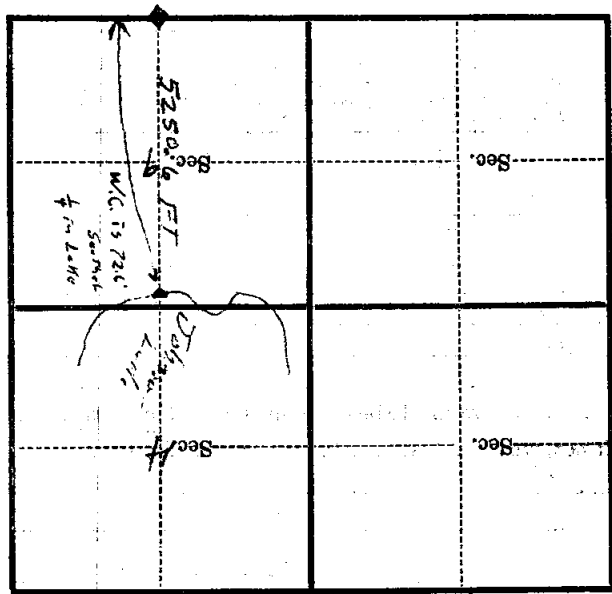
2-11-55

(Date)

Cloud + Cabin adjacent to west.
+ on Rock 2 1/2 X 3' S 33 W 49.55
+ on Rock 2 1/2 X 3' S 6 W 40.8

Corner again.

Give any further facts which will aid in finding this
chains distant.
from which this Corner bears
side of
tree inches diameter, on the
Metal Location Poster is on a



(Make sketch of topography near Corner)

U. S. Department of Agriculture

FOREST SERVICE

Chippewa NATIONAL FOREST

CORNERS OF THE PUBLIC SURVEY

T. 59 R. 26 9th Mer.

Meander Corner common to Sections
 _____, _____, 10, and 11

Corner consists of a Tamarack stake (not) in place

State condition Good

Dimensions above ground 4" x 4" x 36" inches

Sketch grooves, letters, figures, or notches, on proper face or edge.

CARDINAL POSITION

DIAGONAL POSITION

	MC		MC
	5 10		5 11
N	W	S	E

NW	SW	SE	NE

Mound of _____ is located _____

Pits are located _____

Sketch markings of Bearing Trees (or Rocks) in proper box and fill blanks below, giving bearings from Corner to Trees and Distances in Links.

MC	MC		
5 11	5 10		
B. T.	B. T.		

Species Birch Birch

Diameter 6" 5"

Bearing N45°E N15°W

Distance .4 ch. .65 ch.

Do you believe this to be a genuine Land Office Corner? yes

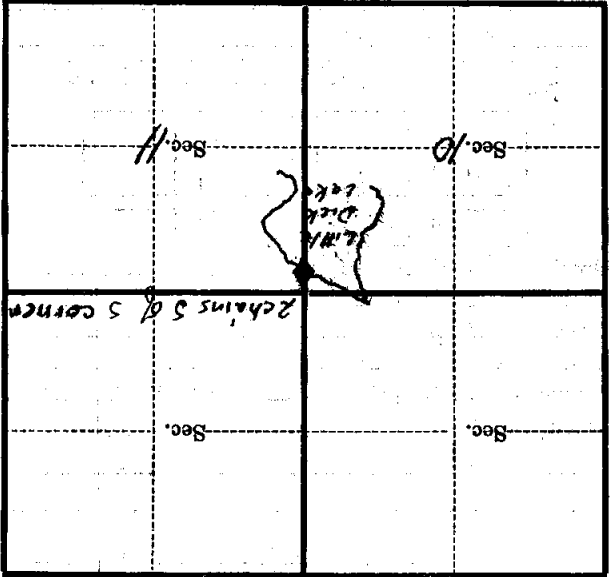
If not, why? Reestablished - Old B.T. makes
elligible, but recognizable as such.

S Rommel
 (Signature)

Compassman
 (Title)

10/23/33
 (Date)

Metal Location Poster is on a tree _____ inches diameter, on the _____ side of _____ from which this Corner bears _____ chains distant. Give any further facts which will aid in finding this Corner again.



(Make sketch of topography near Corner)