

U. S. Department of Agriculture
FOREST SERVICE

Posted.

Chippewa NATIONAL FOREST *7-5*
CORNERS OF THE PUBLIC SURVEY

T. *59N-60N* R. *26W* *4th* Mer.

Section Corner common to Sections
31, 32, 5, and 6

Corner consists of a *Woody post* in place
State condition *good*

Dimensions above ground *30* inches

Sketch grooves, letters, figures, or notches, on proper face or edge.

CARDINAL POSITION

DIAGONAL POSITION

N	W	S	E

S 31	S 6	S 5	S 32
NW	SW	SE	NE

Mound of _____ is located _____

Pits are located _____

Sketch markings of Bearing Trees (or Rocks) in proper box and fill blanks below, giving bearings from Corner to Trees and Distances in Links.

T60N R26W S31	T60N R26W S32	T59N R26W S5	

Species *Birch Cedar Birch*
Diameter *9" 8" 11"*
Bearing *N40°W N25°E S30°E*
Distance *334 754 914*

Do you believe this to be a genuine Land Office Corner? *No*

If not, why? *Scribbling on witness trees shows age to be about 10 yrs. ago; probably County No 13, T. at base of trees*

J. N. Mason

(Signature)

Feb 7, 1935
(Date)

Technical Foreman
(Title)

Corner again.
line tree on lake shore
is old blazed white pine
Stub 20' high.

Give any further facts which will aid in finding this
chains distant.

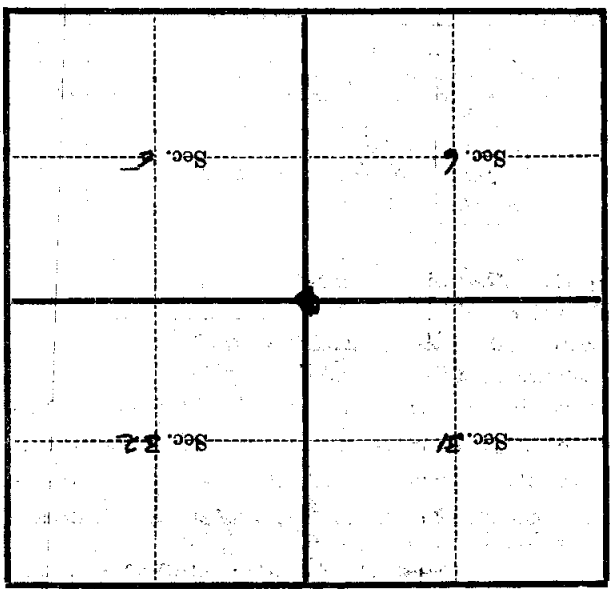
from which this Corner bears
side of

Bearing tree
540° E

tree 9 inches diameter, on the

S.E.

Metal Location Poster is on a white birch



(Make sketch of topography near Corner)

T. 59N-60W R. 26W 4th Mer.

U. S. Department of Agriculture

FOREST SERVICE

2-5

Chippewa NATIONAL FOREST

CORNERS OF THE PUBLIC SURVEY

T. 59 N 58 R. 26 W 4 Mer.

Section Corner common to Sections

21, 22, 5, and 6

Corner consists of a Birch post (not) in place

State condition noted at bottom

Dimensions above ground and state size in inches

Sketch grooves, letters, figures, or notches, on proper face or edge.

CARDINAL POSITION

DIAGONAL POSITION

--	--	--	--

--	--	--	--

N W S E

NW SW SE NE

Mound of is located

Pits are located

Sketch markings of Bearing Trees (or Rocks) in proper box and fill blanks below, giving bearings from Corner to Trees and Distances in Links.

	S 32	S 21	
	BT	BT	

Species Balsam Fir Cedar Birch

Diameter 7 12 16

Bearing N. 55 E N. 48 E N. 79 W

Distance 127 112 143

Do you believe this to be a genuine Land Office Corner?

If not, why?

Reserved by county

Murphy - Nicholas

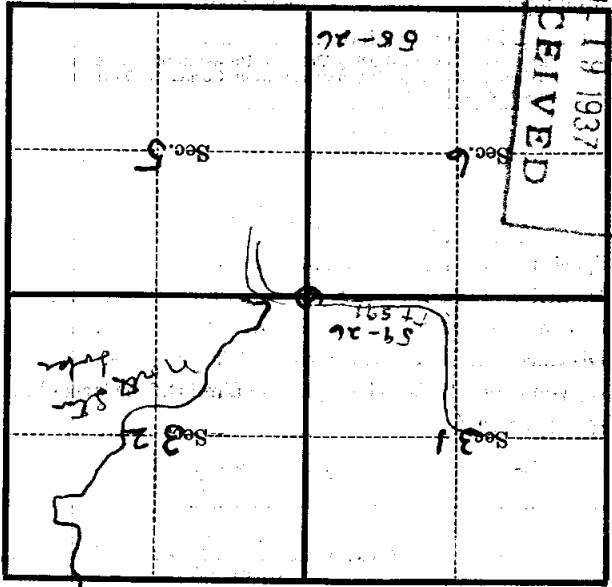
(Signature)

12/23/26 (Date)

Ch. Clerk (Title)

T. 57-58 N. R. 26 7 Mer.

(Make sketch of topography near Corner)



Metal Location Poster is on a *Tupelo* tree

9 inches diameter, on the *West* side of *Rock*

from which this Corner bears *Due West*

chains distant.

Give any further facts which will aid in finding this

Corner again.

~~Corner post by a *granite* tree
 up into road and *west*
 north *to* *from* about $\frac{1}{4}$ mile east of
 corner post *on* *main* *post*
 part of T 591.~~

U. S. National Forest
CASS LAKE, MINN.

RECEIVED
JUN 19 1937

Remap
copy

U. S. Department of Agriculture
FOREST SERVICE

2-5

Chippewa NATIONAL FOREST

CORNERS OF THE PUBLIC SURVEY

T. 59 N R. 26 W 4th Mer.

Section Corner common to Sections
31, 32, and 5+6 58-26

Corner consists of a Birch Post (not) a place

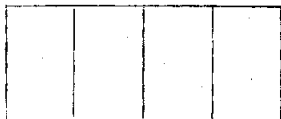
State condition Good

Dimensions above ground Not in ground inches

Sketch grooves, letters, figures, or notches, on proper face or edge.

CARDINAL POSITION

DIAGONAL POSITION



N W S E



NW SW SE NE

Mound of is located

Pits are located

Sketch markings of Bearing Trees (or Rocks) in proper box and fill blanks below, giving bearings from Corner to Trees and Distances in Links.

	Sec 32	Sec 31	
	BT	BT	

Species Balsam ^{stump} Cedar Birch

Diameter 9" 12" 12"

Bearing N5E N68E N79W

Distance 1.09 ch 1.123 ch 1.43 ch

Do you believe this to be a genuine Land Office Corner? No

If not, why? County Post + County scribing on bearing trees.

(Signature)

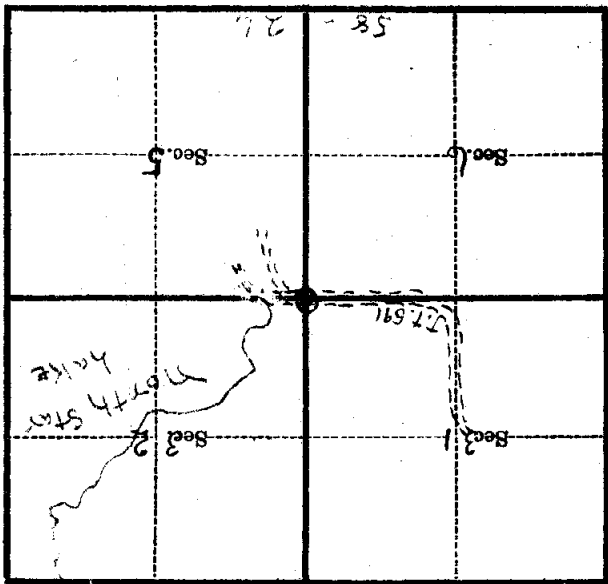
10/23/36

(Date)

(Title)

T. 59 N. R. 26 W. 4th Mer.

(Make sketch of topography near Corner)



Metal Location Poster is on a Marker Post

tree 6 inches diameter, on the South

side of Park

from which this Corner bears
F.S. Corner Post and in
Grouse Reservoir

Give any further facts which will aid in finding this

Corner again.

Co. corner post lying on ground, believe
corner to be in center of road.
North Star Lake about 1/4 mile East

of corner.
Timber type Aspen - birch - balsam.

Balsam stump bearing tree rotted.

F.S. Poster on telephone pole - Due East

from F.S. Post. 110 ft. in

Rt. of way cut out Due So. from

corner + T.T. 591