

Ranger 687

Form 874-S—Revised May, 1918
U. S. Department of Agriculture
FOREST SERVICE

2-4

~~Chippewa~~ NATIONAL FOREST
CORNERS OF THE PUBLIC SURVEY

T. 59-38 R. 26 4 Mer.
5 1/16 Corner common to Sections
31, and 6

Corner consists of a cedar post (not) in place
State condition good

Dimensions above ground 3.0 inches

Sketch grooves, letters, figures, or notches, on proper face or edge.

CARDINAL POSITION

DIAGONAL POSITION

--	--	--	--

--	--	--	--

N W S E

NW SW SE NE

Mound of _____ is located _____

Pits are located _____

Sketch markings of Bearing Trees (or Rocks) in proper box and fill blanks below, giving bearings from Corner to Trees and Distances in Links.

1/16

BT

BT

Species Aspen Aspen

Diameter 10" 6"

Bearing S13°W N16°SE

Distance 12 lks 73 lks

Do you believe this to be a genuine Land Office Corner? _____

If not, why? _____

resurveyed by county

M. H. V.

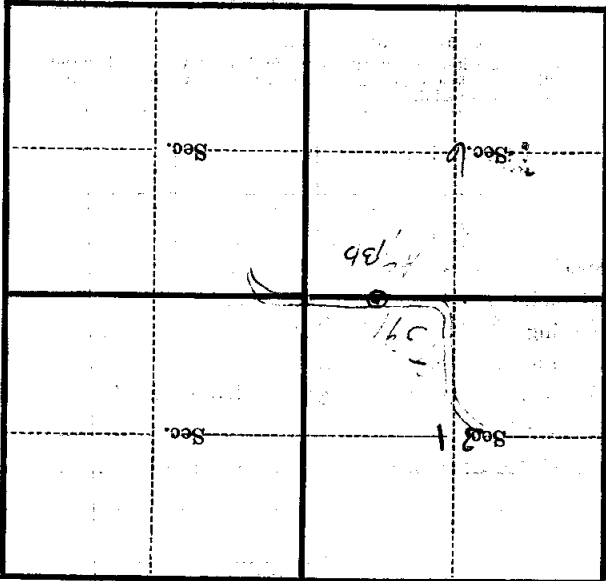
(Signature)

15/22/26
(Date)

J. Clerk
(Title)

Corner again.
corner on the side of T 591
center of road.
between corner originally was in

Metal Location Poster is on a
tree 6 inches diameter, on the
side of Post
from which this Corner bears
12.86 chains distant.
Give any further facts which will aid in finding this



(Make sketch of topography near Corner)

T. 59 R. 26 Mer.

U. S. Department of Agriculture

FOREST SERVICE

2-4

NATIONAL FOREST

CORNERS OF THE PUBLIC SURVEY

T. 59-58 N R. 26 W 4th Mer.

E 1/16

Corner common to Sections

31, and 6

Corner consists of a cedar post (not) in place

State condition

good

Dimensions above ground 30 inches

Sketch grooves, letters, figures, or notches, on proper face or edge.

CARDINAL POSITION

DIAGONAL POSITION

--	--	--	--

--	--	--	--

N W S E

NW SW SE NE

Mound of _____ is located _____

Pits are located _____

Sketch markings of Bearing Trees (or Rocks) in proper box and fill blanks below, giving bearings from Corner to Trees and Distances in Links.

1/16

37

37

Species *Aspen* *Aspen*

Diameter 10" 6"

Bearing S. 35° W N 14° 50' E

Distance 12 1/2 73 1/2

Do you believe this to be a genuine Land Office Corner? _____

If not, why? _____

Resurveyed by County

W. M. ...

(Signature)

12/24/26

(Date)

(Title)

Corner originally in center of
Corner Post on the N.W. 1/4 591

Corner again.
Give any further facts which will aid in finding this

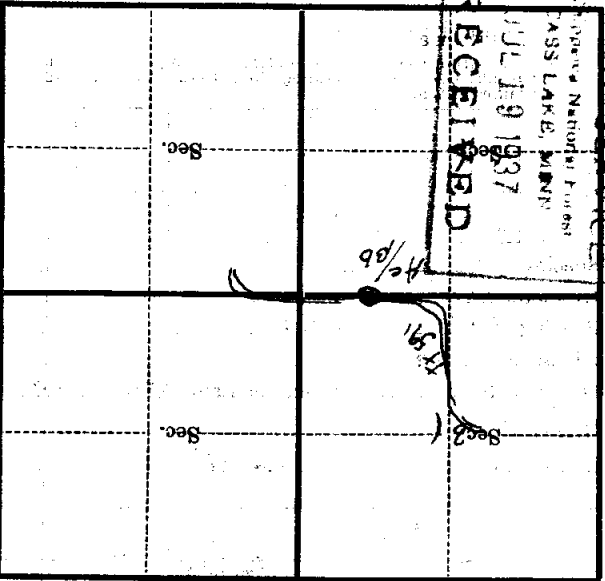
1/2 chains distant.

from which this Corner bears
from do

side of Post

tree 6 inches diameter, on the north

Metal Location Poster is on a
7/8 Post



(Make sketch of topography near Corner)

T. R. Mer.