

U. S. Department of Agriculture

FOREST SERVICE

R-3

Chippewa

NATIONAL FOREST

CORNERS OF THE PUBLIC SURVEY

T. *59N* R. *26W* *4 P* Mer.

1/4 Corner common to Sections
 _____, _____, *19*, and *30*

Corner consists of a _____ (not) in place

State condition _____

Dimensions above ground _____ inches

Sketch grooves, letters, figures, or notches, on proper face or edge.

CARDINAL POSITION

DIAGONAL POSITION

--	--	--	--

N W S E

--	--	--	--

NW SW SE NE

Mound of _____ is located _____

Pits are located _____

Sketch markings of Bearing Trees (or Rocks) in proper box and fill blanks below, giving bearings from Corner to Trees and Distances in Links.

Species _____

Diameter _____

Bearing _____

Distance _____

Do you believe this to be a genuine Land Office Corner? *Yes*

If not, why? *U.S.F.S.*

George H. Young

(Signature)

8-22-35

(Date)

Carl Young

(Title)

Corner again.

Give any further facts which will aid in finding this

chains distant.

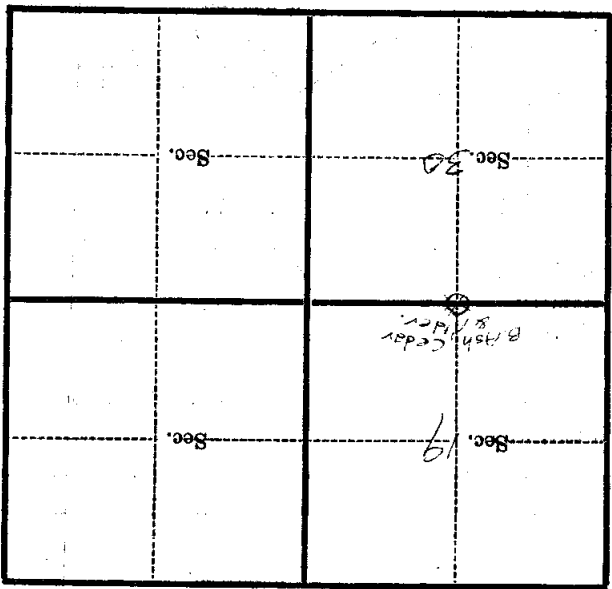
0.10

from which this Corner bears 535 E

side of tree

tree 6 inches diameter, on the SE

Metal Location Poster is on a W Cedar



(Make sketch of topography near Corner)

T. 59N R. 26W

Mer. 47

U. S. Department of Agriculture

FOREST SERVICE

R-3 P

Chippewa NATIONAL FOREST

CORNERS OF THE PUBLIC SURVEY

T. 59N R. 26W 4 P Mer.

1/4 Corner common to Sections 19, and 30

Corner consists of a (not) in place

State condition

Dimensions above ground inches

Sketch grooves, letters, figures, or notches, on proper face or edge.

CARDINAL POSITION

DIAGONAL POSITION



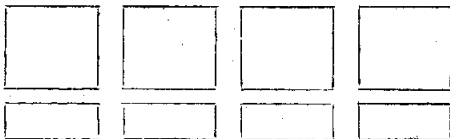
N W S E

NW SW SE NE

Mound of is located

Pits are located

Sketch markings of Bearing Trees (or Rocks) in proper box and fill blanks below, giving bearings from Corner to Trees and Distances in Links.



Species

Diameter

Bearing

Distance

Do you believe this to be a genuine Land Office Corner? No

If not, why? U.S.F.S.

George H. Jennings

(Signature)

8-22-35

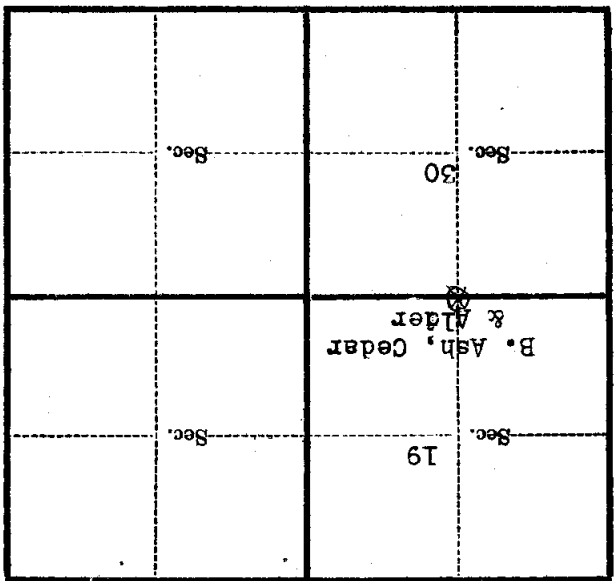
(Date)

Const Foreman C & M

(Title)

Corner again.
Give any further facts which will aid in finding this

0.10 chains distant.
from which this Corner bears S 35 E
side of Tree
6 inches diameter, on the SE
Metal Location Poster is on a W. Cedar



(Make sketch of topography near Corner)

T. 59N R. 26W 4 P. Mer.