

U. S. Department of Agriculture  
FOREST SERVICE

N-1

Chippewa NATIONAL FOREST

CORNERS OF THE PUBLIC SURVEY

T. 59N R. 26+27W 4 P Mer.  
Sec.

Corner common to Sections 18, 19, 13, and 24

Corner consists of a 4"x4" (not) in place

State condition Rated off. Replaced

Dimensions above ground 24 Inches

Sketch grooves, letters, figures, or notches, on proper face or edge.

CARDINAL POSITION

DIAGONAL POSITION

--	--	--	--

5	5	5	5
13	24	19	18

N W S E

NW SW SE NE

Mound of is located

Pits are located

Sketch markings of Bearing Trees (or Rocks) in proper box and fill blanks below, giving bearings from Corner to Trees and Distances in Links.

5		5	5
13		19	18

BT		BT	BT
----	--	----	----

Species Spruce (stump) Aspen Sp. (stump)

Diameter 10 12

Bearing N4W S58E N52E

Distance 0.52 0.52 0.78

Do you believe this to be a genuine Land Office Corner? No

If not, why? Appears to be Co. corner

George N. Jennings

(Signature)

8-20-35

(Date)

Const. Foreman C.M.

(Title)

Blank lined area for notes at the top of the page.

Corner again.

Give any further facts which will aid in finding this

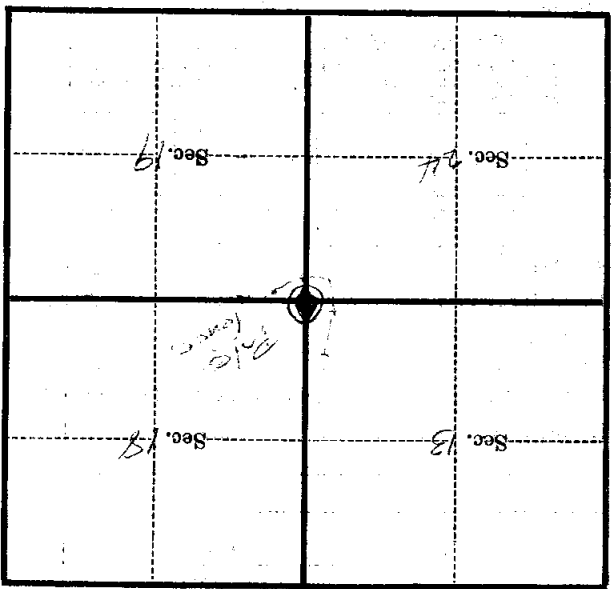
0.22 chains distant.

from which this Corner bears N33°W

side of tree

tree 6 inches diameter, on the NW

Metal Location Posters on a Balsam



(Make sketch of topography near Corner)

T. 59N R. 26E 27W EP Mer.

U. S. Department of Agriculture

FOREST SERVICE

N-1 P

Chippewa

NATIONAL FOREST

CORNERS OF THE PUBLIC SURVEY

T. 59N R. 26 & 27 W 4 P Mer.

Section

Corner common to sections

18 19 13 and 24

Corner consists of a 4" x 4" (not) in place

State condition Rotted off. Replaced

Dimensions above ground 24 inches

Sketch grooves, letters, figures, or notches, on proper face or edge.

CARDINAL POSITION

DIAGONAL POSITION

--	--	--	--

S	S	S	S
13	24	19	18

N W S E

NW SW SE NE

Mound of is located

Pits are located

Sketch markings of Bearing Trees (or Rocks) in proper box and fill blanks below, giving bearings from Corner to Trees and Distances in Links.

S
13

--

S
19

S
18

BT
----

--

BT
----

BT
----

Species Spr. (stump) Aspen Sp. (stump)

Diameter 10 12 18

Bearing N4W S58E N52E

Distance 0.52 0.52 0.78

Do you believe this to be a genuine Land Office Corner? No

If not, why? Appears to be Co. corner

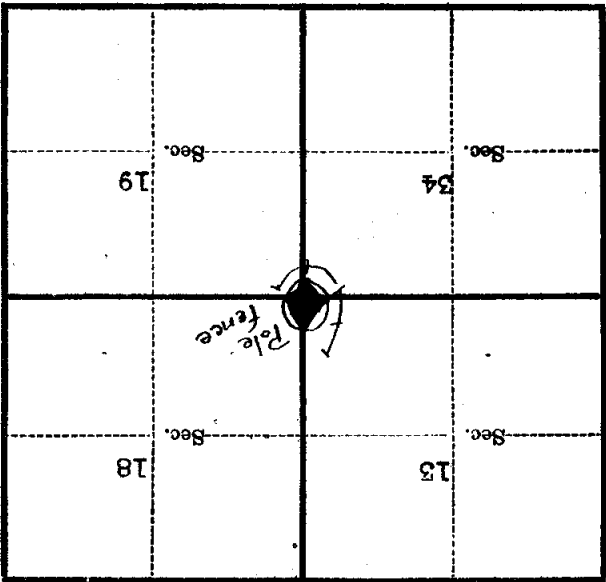
George H. Jennings

8-20-35

Const. Foreman C & M

(Date)

(Title)



(Make sketch of topography near Corner)

T. 59N R. 26 & 27W 4 P Mer.

Belser

Metal Location Poster is on a

tree 6 inches diameter, on the

tree

side of

N33W

from which this Corner bears

0.22

chains distant.

Give any further facts which will aid in finding this

Corner again.