

U. S. Department of Agriculture

FOREST SERVICE

A-15

NATIONAL FOREST

CORNERS OF THE PUBLIC SURVEY

T. 58 R. 25 Mer.

No. 14 1/4 Corner common to Sections 3, 4, 5, and 6, T59 R 25 Sec. 34

Corner consists of a I.P. Pipe & Cap (not) in place

State condition good

Dimensions above ground 24 inches

Sketch grooves, letters, figures, or notches, on proper face or edge.

CARDINAL POSITION

DIAGONAL POSITION



N W S E

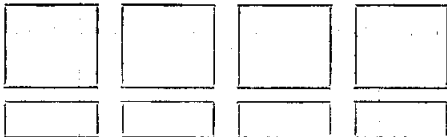


NW SW SE NE

Mound of _____ is located _____

Pits are located _____

Sketch markings of Bearing Trees (or Rocks) in proper box and fill blanks below, giving bearings from Corner to Trees and Distances in Links.



Species Jack Pine

Diameter 10"

Bearing S

Distance 1 1/2 chs

Do you believe this to be a genuine Land Office Corner? _____

If not, why? _____

Set 1954 by County

Ralph H. Christopher

(Signature)

D. F. R.

(Title)

12-14-54 (Date)

Treat line to No. 14

2 ch. south.

In A.C. type - J.P. type

Corner again.

Give any further facts which will aid in finding this

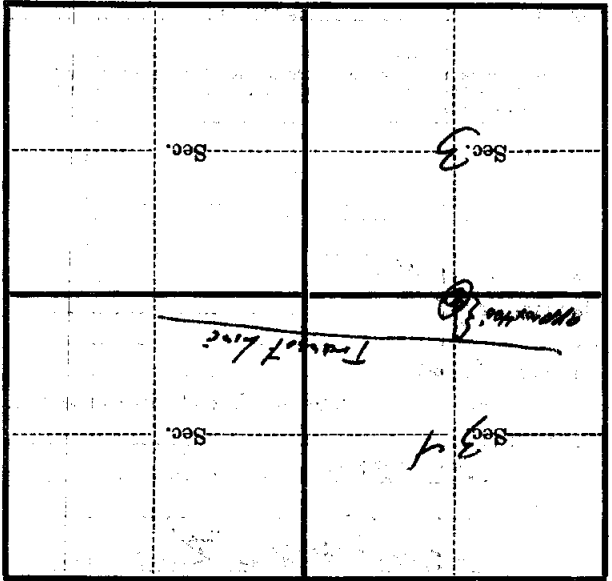
chains distant.

from which this Corner bears

side of

tree inches diameter, on the

Metal Location Poster is on a *B.T.*



(Make sketch of topography near Corner)