

U. S. Department of Agriculture

FOREST SERVICE

Chippewa NATIONAL FOREST

CORNERS OF THE PUBLIC SURVEY

T. 58 R. 26W 4th P Mer.

Sec Cor Corner common to Sections
34^{58N}, 35, 2^{57N}, and 3

Corner consists of a _____ (not) in place

State condition _____

Dimensions above ground _____ inches

Sketch grooves, letters, figures, or notches, on proper face or edge.

CARDINAL POSITION

DIAGONAL POSITION

--	--	--	--

S	S	S	S
34	3	2	35

N W S E

NW SW SE NE

Mound of _____ is located _____

Pits are located _____

Sketch markings of Bearing Trees (or Rocks) in proper box and fill blanks below, giving bearings from Corner to Trees and Distances in Links.

		757N R26W 52	
		BT	

Species _____ Fallen Spl.

Diameter _____ 5"

Bearing _____ S66°E

Distance _____ 0.34

Do you believe this to be a genuine Land Office Corner? _____

If not, why? Re-established by Co

George J. Jennings

(Signature)

10-9-35

(Date)

G. J. Johnson C.M.

(Title)

A-17

~~1~~

Corner again.

Give any further facts which will aid in finding this

chains distant.

0.14

from which this Corner bears

N30°E

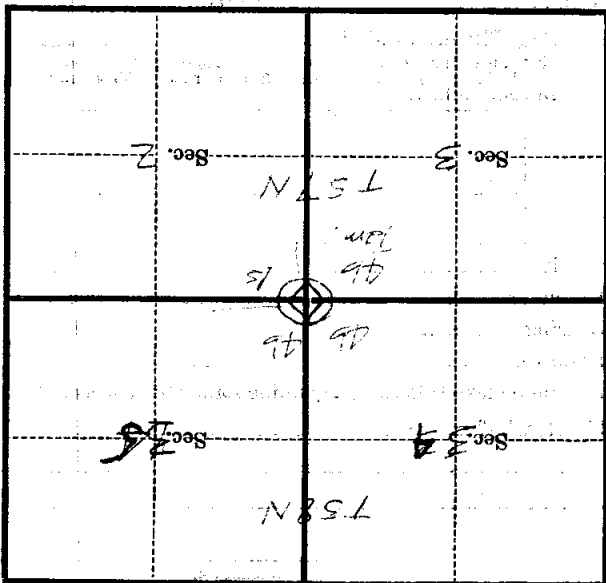
side of

tree

tree 5 inches diameter, on the EAST

Metal Location Poster is on a

BARABACK



(Make sketch of topography near Corner)

Mer.

R.

T.

U. S. Department of Agriculture

FOREST SERVICE

417

Chippewa

NATIONAL FOREST

CORNERS OF THE PUBLIC SURVEY

T. 57 N. R. 45 E. 4th Pr. Mer.

Section

34, 35, 2, and 3

Corner common to Sections

Corner consists of a 4" Cedar (not) in place

State condition good

Dimensions above ground 4" sq. - 24" high inches

Sketch grooves, letters, figures, or notches, on proper face or edge.

CARDINAL POSITION

DIAGONAL POSITION

S	S	S	S
34	3	2	35

N W S E

NW SW SE NE

Mound of is located

Pits are located

Sketch markings of Bearing Trees (or Rocks) in proper box and fill blanks below, giving bearings from Corner to Trees and Distances in Links.

S 34	S 2		

Species Balsam Birch

Diameter 8" 18"

Bearing N. 30° W. S. 75° E.

Distance 50 links 82 links

Do you believe this to be a genuine Land Office Corner? No

If not, why? The bearing trees do not check with C.L.O. It looks like a county cor. Snow too deep to find pipe.

[Handwritten Signature]

(Signature)

3/9/37

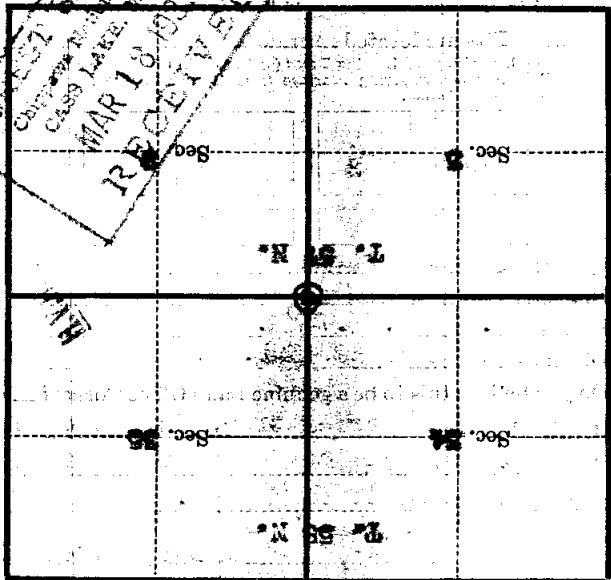
(Date)

[Handwritten Title]

(Title)

locate in between grove. Truck trail
comes from # and turns south. The
post is the 21 for the curve.
Corner again.
Give any further facts which will aid in finding the
chains distant.

from which this Corner bears
side of tree.
10 inches diameter, on the
Metal Location Poster is on a



(Make sketch of topography near Corner)

T. 36 N. R. 26 W. 4th Pr. Mer.

U. S. Department of Agriculture
FOREST SERVICE

RA-17

Chippewa NATIONAL FOREST

CORNERS OF THE PUBLIC SURVEY

T. 37-58 R. 26 4 Mer.

Sec Corner common to Sections
2, 3, 34, and 35

Corner consists of a Tam Stake ^{row pins} in place
State condition _____

Dimensions above ground _____ inches

Sketch grooves, letters, figures, or notches, on proper face or edge.

CARDINAL POSITION

DIAGONAL POSITION

--	--	--	--

S 34	S 15	S 3	S 2
---------	---------	--------	--------

N W S E

NW SW SE NE

Mound of _____ is located _____

Pits are located _____

Sketch markings of Bearing Trees (or Rocks) in proper box and fill blanks below, giving bearings from Corner to Trees and Distances in Links.

T 57 N R 26 S 2			
BT			

Species Spruce

Diameter 5"

Bearing 366° E

Distance 34 1/2 LKS

Do you believe this to be a genuine Land Office Corner? Yes

If not, why? Re-established by Co.

C. J. Knoblanch
(Signature)

7/20/37
(Date)

ECW Ant
(Title)

A 17

Corner again.

Give any further facts which will aid in finding this

chains distant.

114

5290 W

from which this Corner bears

side of

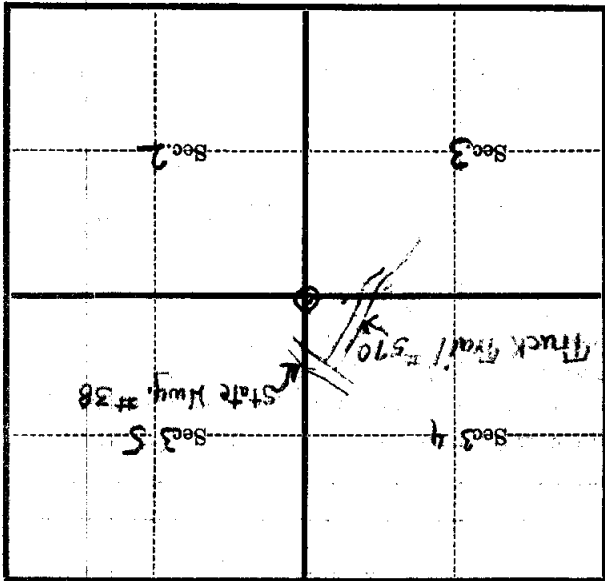
Tam

tree 7 inches diameter, on the

SW

Metal Location Poster is on a

Tam



(Make sketch of topography near Corner)

T. 57-58 N R. 26 W. Mer. 4 74