

INDEX

- 2 7-46-28 Walden
- 3 Lots 8-9 BK4 Lakeview Poca
- 4 SEWER - Prommal
- 6 2-137-27 Dudley
- 7 24-135-28 Rohl
- 8 5-46-28 Moore
- 9 17-139-26 Martison
- 10 Luth Ch. Outing
- 11-13 16-139-26 Washburn Lodge
- 14 29-47-27 Fenway
- 15-16 11-136-25 Taylor
- 17 Lot 11-12 B2 Minster Pt
- 18 Lot 4-5 B3 Lubovich
- 19-21 Big Sandy Accident
- 22-25 26-46-28 Bottles
- 26 33-139-26 Usherwood
- 27-29 33-134-28 Holmes
- 30-35 See 16-17 46-28 Pyrofax
- 36 & 39 Prommal Sewer
- 37 25-138-28 Cemetery
- 38 13-133-29 Park Region
- 40 Lot 1 B8 Cont #2 Crosby
- 41-42 1-44-28 Madson
- 43-45 Lots 19-20 Bg Lake Park Add  <sup>Small</sup>  
 & Cont Lot B - Puffyl

INDEX

- 46 - Janet Shores - Smilich
- 31 ~~47-53A~~ 13-133-29 Park Region
- 54-55 Pyrofax - Deerwood
- 56 7-133-28 Brunelle
- 57 Crosby Beach
- 58-59 26-46-28 Nelson
- 60-66 9-136-26 Pearson
- 67-77 76 13-133-29 Park Region
- 82 - Village Crosby - Hyd Cont #2

P

Sa 17 125.26  
Gout Lot 8

Martens

200. 6<sup>00</sup> 198.6  
32.1  
231.1

199.5  
167  
321

130.1  
2  
330.1

231.1  
330.1  
263.6

924.8  
391.5  
1216.3

47.9  
1264.2  
85.3

1349.5

200 3<sup>00</sup> 199.6  
11.9  
211.5

48.1 4<sup>00</sup> 47.9

85.9 6<sup>00</sup> 85.3

S. on W Eye  
Gout Lot 8

28 Aug 59

9

W. on  
Gout Lot 8  
P. 4

231.1

330.1

263.6

391.5

47.9

85.3

5/2  
4/2  
2.0

Little Mole

Plot 9, various

Luth church  
Outing Converse

33	
200.38	100.16
130.4	100.16
<u>100.16</u>	
463.75	

) 173-24
86 3/4
179 60
<u>86-44</u>
93 16

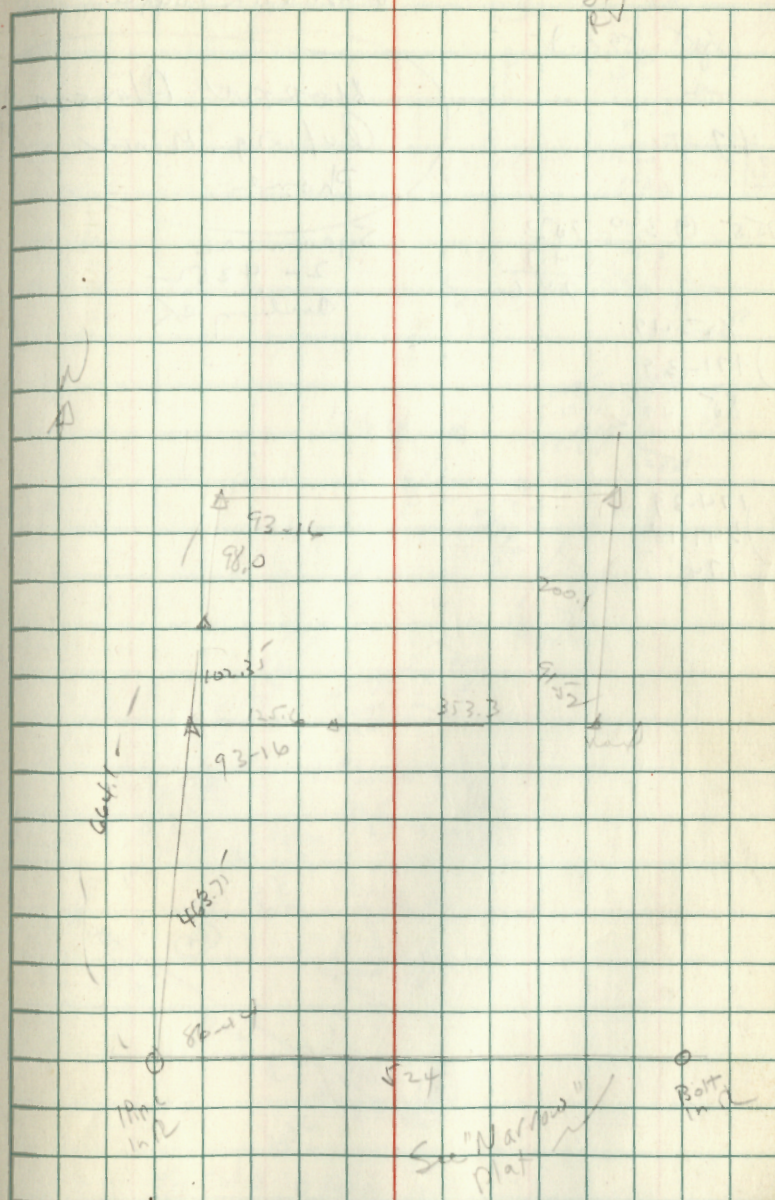
200 3
<u>102.30</u>
98.0

4798
<u>3256</u>
1542

4789
<u>1256</u>
3533

) 176-3)
93-15 1/2

2 Aug 82 10







16-18/ 139-26

109-25

218-50

93.1 @ 5 92.7

168-18

336-57

168-18

461.6

461.5

96-38

193-15

96 37.5

166-16

332-51

$$\begin{array}{r}
 105-45 \\
 166-05 \\
 \hline
 271-50 \\
 359-40 \\
 \hline
 271-50 \\
 \hline
 88-09
 \end{array}$$

166-06

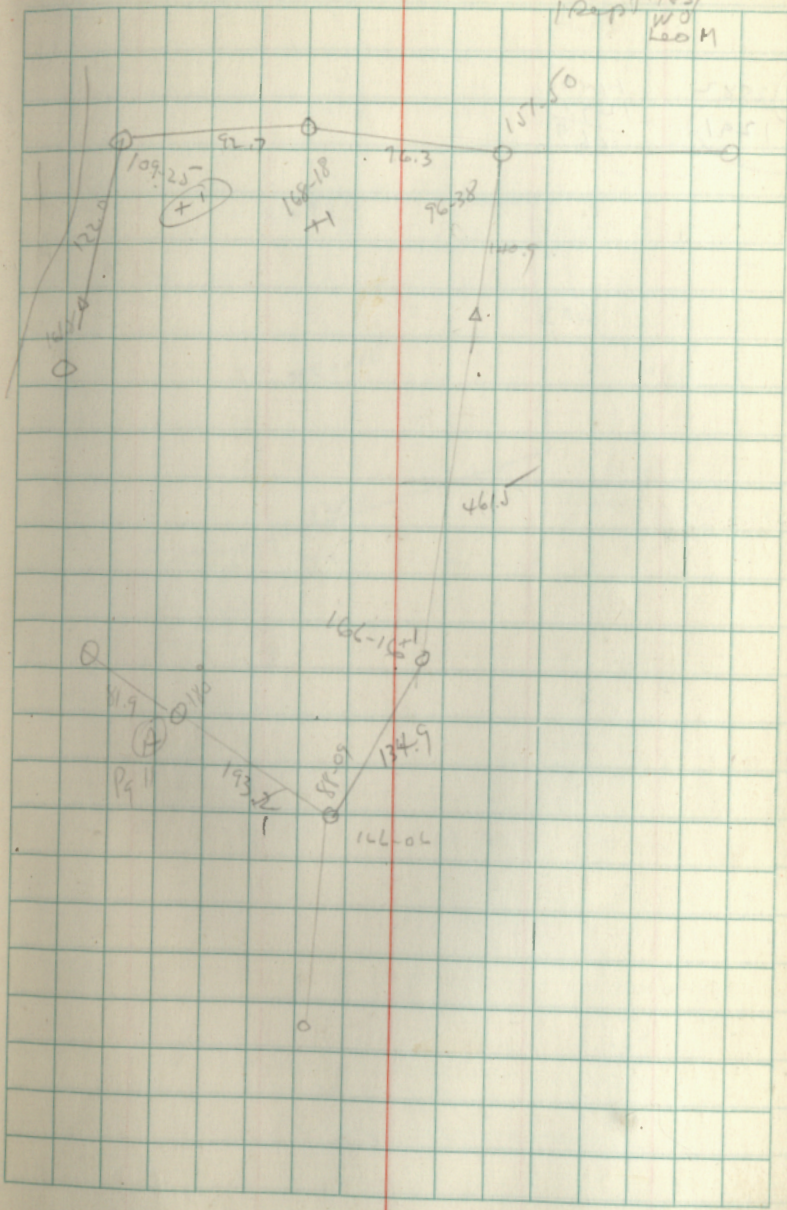
332-13

176-18

88-09

31 Aug 59 B

120 pt 143  
100  
120 M





33-134-28

Holmes

SE<sup>1</sup>/<sub>4</sub>-SE<sup>1</sup>/<sub>4</sub>

70-25  
180-50

153.8  
169.1  
322.9

155.7 @ 8<sup>th</sup> 153.8

179-58  
359-57

180-07  
3-180-20  
179.6  
66.00  
113.20

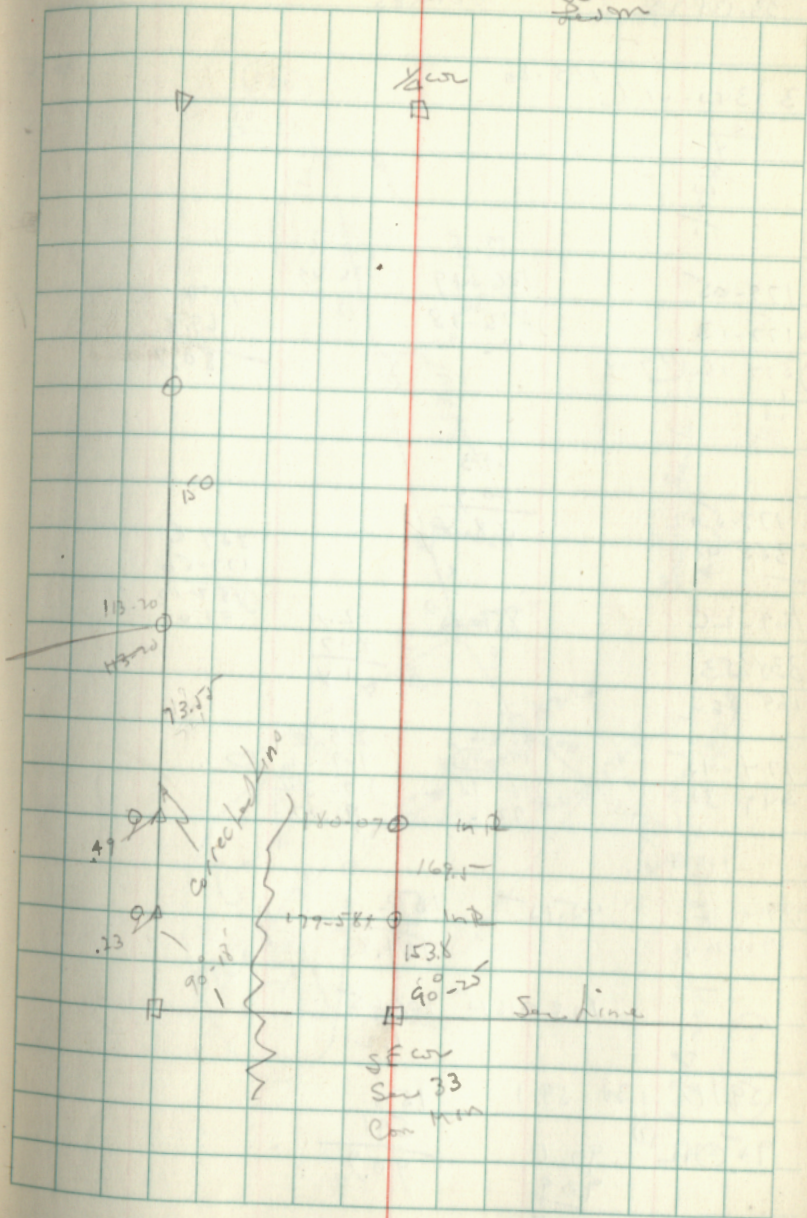
180-07

66°-40' Road

150 @ 3 20 149.7

18 Sept 59 27

5  
sum







33-13-28

Holmes

163.3 @ 40 163.15  
163.45

110 @ 15' 10  
106.15  
105.7  
48

178-17  
356 33  
178-112

150  
443  
105.7

100 @ 7' 10 101.75  
101.75  
101.75  
1.2

181-43  
103  
90 51.2

209  
10.7  
101.6  
48.4  
110.

137-16  
274-33

176-32  
353-05

155.9 @ 10 153.5  
150.1  
3.4

150.9  
42.6  
108.3

167-18

334 31  
167 17

179-25  
358-54

150 @ 13' 10  
146.1  
141.7  
4.4

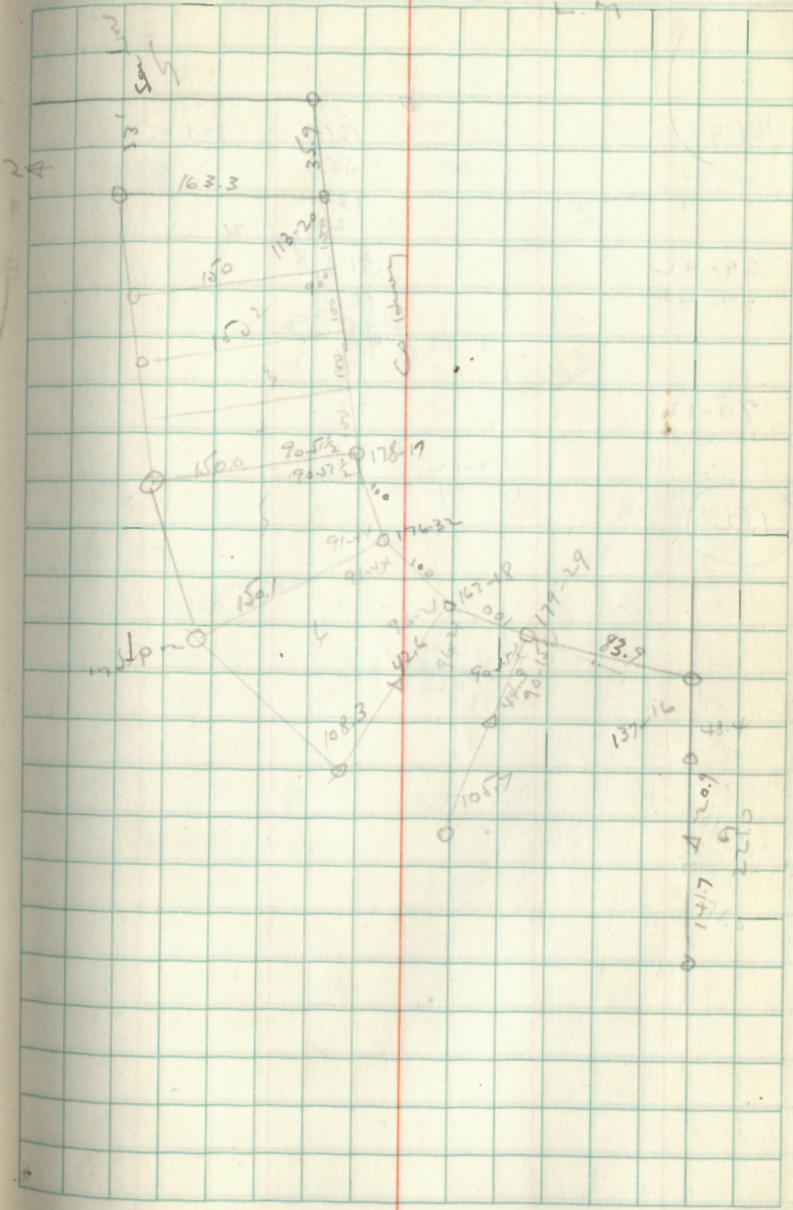
192-43  
90 21

115 @ 15' 10 110.6

110.6  
108.3  
2.3

24 days 59  
J5  
100 m  
L-11

29







13-133-29

119-11  
238-22

149-16  
298-32

129-14  
288-28

137  
3-14

134.6 ⊙ ⊙ 1 = 34.5  
67  
201.5

179-27  
358-54

100-04  
200-08

179-57  
359-13  
179

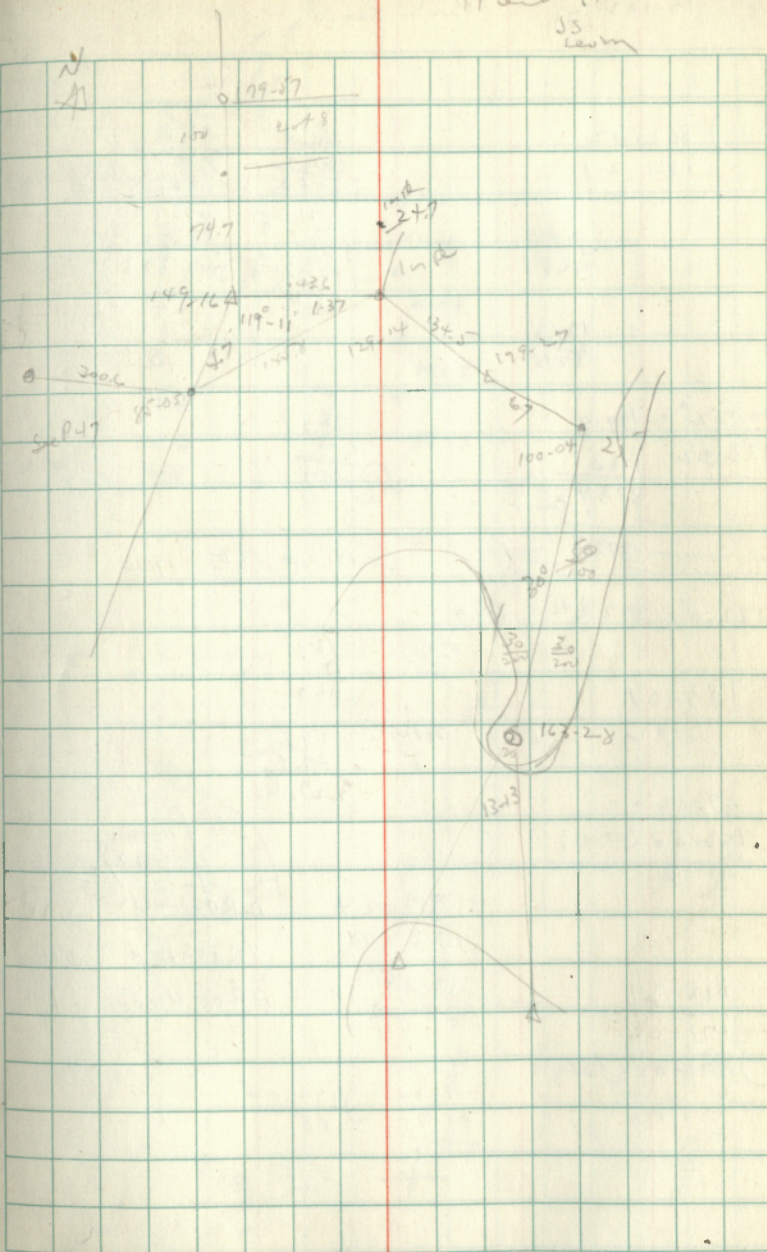
13-12  
100 19  
66 30  
179 64

163-28  
326-56

13-13  
39-38

100.  
300.1014) 300.

17 Aug 15 48  
J.S. Leach





12-133-27

200  
100  
150  
39.1  

---

489.1

191.2  
371.6  

---

2368.5

16249  
4891  

---

21140  
2291  

---

23431

138-02

3-54-07

3) 414  
188-02  

---

23685

543

137-59-  
275-59  
137 59 1/2

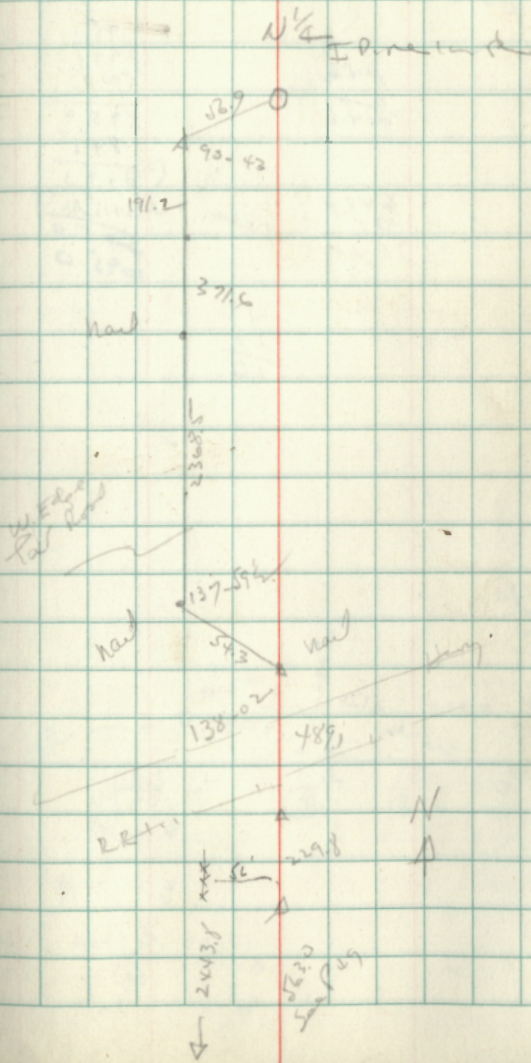
90-43

181-24  
90-52

138-02  
276-05

Ran N-S 1/4 mi

20-059 50  
15  
25







13-133-29

Parks Region

89-07  
178 13320.5  
330  
650.5

4622.9

5647

5187.6

-

5187.4

76-43

196.7

153 237  
76 54  
5967

4600

229

44229

158-41

317-21  
158 502

2000230

199.8

3049

200 @ 227

199.7

1456

3483

5647

179-05

358-11

80-59

161-58

3 242 50

80 58

89-09-

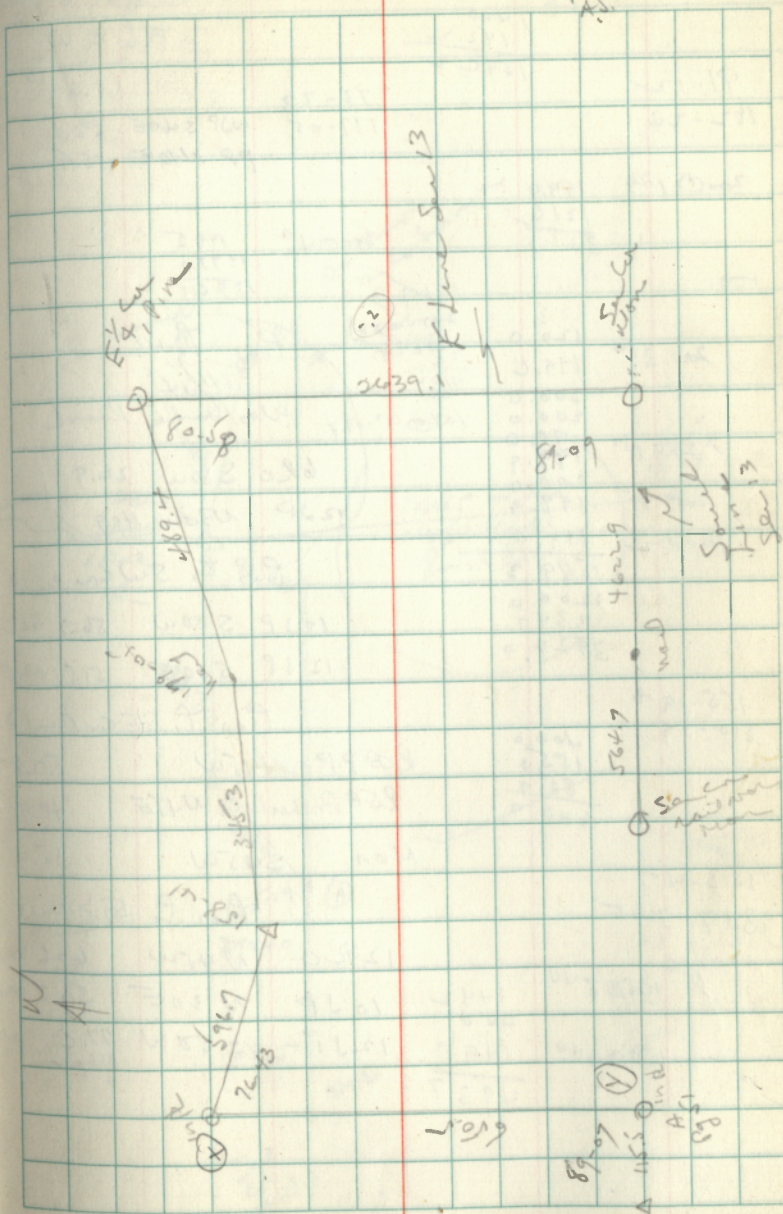
178-19

267-29

89 09-

9 10 11

52

FO  
AD

13-133-29

1400
142.2
1542.2

Pro to W  
S 13  
0m

91-12

93-33

182-24

1400  
1200  
200

117-05

10JP S40E 52.4

PP N40E 55.5

2000/30

199.9
121.6
331.5

200040

199.5

1197.0

1396.5

100.

161.3

200 230

433
120.0
199.6
200.0
200.0
70.0
199.9
200.0
199.9

201-23
342-41
400
1080

Pro to MC

11/4

Wastwater Pond

6 to S50W 22.9

12JP N30W 40.9

Pro to SW corner 13

10JP S50W 56.9

12JP S40E 55.5

Pro to SE corner 2

REA PP N45W 50.8

REA Anchor Pole N45E 48.9

Mon S45W 45.0

153-47

307-34

153

1450500

1442
200
1495
4937

12RO N45W 60.6

10JP N30E 50.3

12JP S50W 77.6

4937

N on Road  
W. Line10 Rev 53  
J  
70  
A

B

W  
A

7.9

Local  
gMC

65.3

107.8

201-23

110

1 Pre

140

93-33

12965 on 100  
21305 (Cord)  
Pond Lake

193-7

153-47

400

155-19 A

29240

33/5

91-12

S  
W  
C  
N  
13As shown  
on the survey

1349

15022

1050

400

100