

INDEX

- 1-22 1934 Survey
- 24-26 12-44-28 Peterson ✓
- 27-28 26-137-28 Adams ✓
- 29-30 24-137-27 Polson ✓
- 31-32 U. Hays Crosby
- 33 G.I. Lots 10-14 Bq Cont #2 ✓
- 34 35-136-27 Wilson ✓
- 35 23-137-28 Erickson ✓
- 36 Harvey Sharpe
- 37-38 Bellhorn Heights 17-49-23 ✓
- 39 35-136-27 art Kelly ✓
- 40, 43-55 2-137-27 Dudley ✓
- 41-42 4-141-26. Jorgelin ✓ (see Book 4)
- 60-61
- 76 Lot 8, 9 B109 lot 2nd of Allen ✓

4-141-26

Laughton

88-54
) 177 48-
88 54

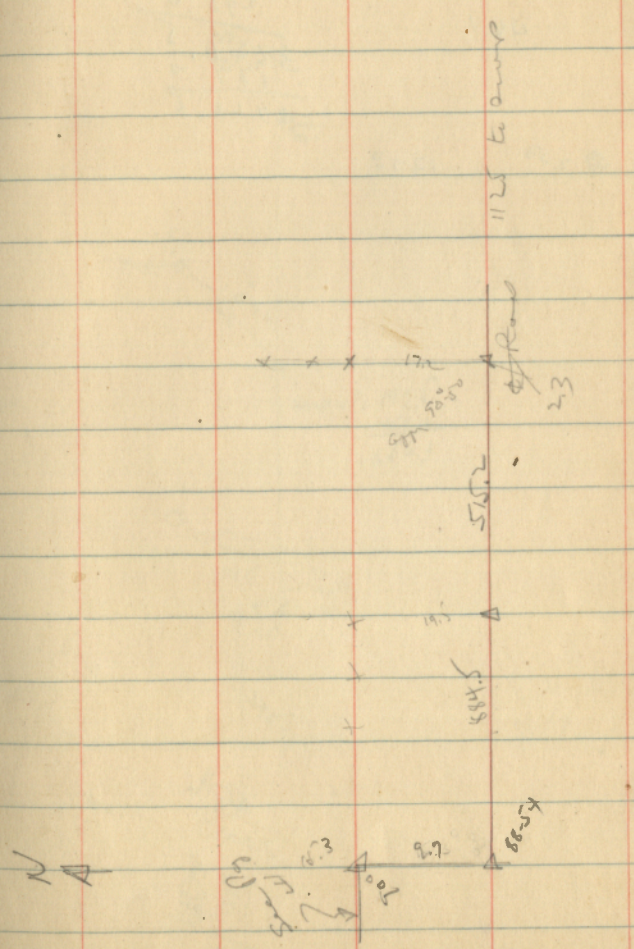
8845
612
1399.7

4/12.3
12997
5812.8

200 350	200
	199.5
	200.0
	200.0
	85.0
	<u>884.5</u>

200 500	199.0
	200.0
	116.2
	<u>515.2</u>

22 Nov 57 42
D
EP



2-137-27 Dudley

89-17
178-29
3) 267-52 L
89-17

1628

1628
1050
2678
656.5
3334.5
295.0
3629.5
137.0
3766.5

15-36
31-12
15

46.1

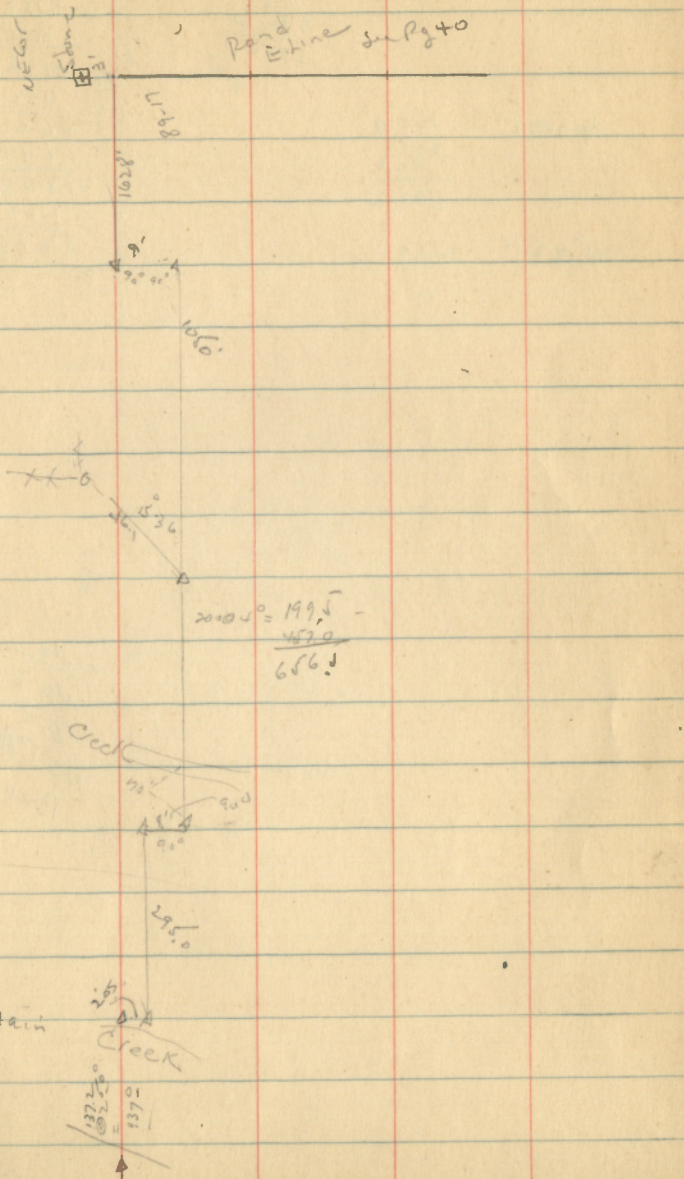
137.2 @ 250

137°

on Random N. line

at NW 1/4
1/4
1/4
1/4
1/4

13



2-137-27 Dudley

219.6
3766.5
3986.1

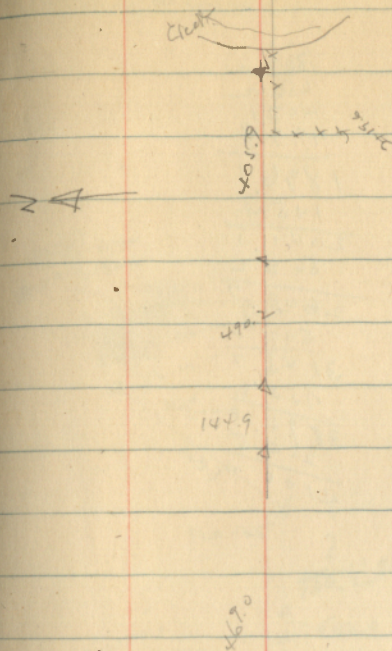
200 @ 1° 199.9
 200
 90.3
 194.2

145 @ 2° 144.9

3766.5
405.9
4172.4
490.2
4662.6
144.9
4807.5
469.0
5276.5

Note
No EVID
of curve
NE 1st possible
Bearing set.

W. in Run. - N. Line



3 100 58

JS
AS
LM

44

4-14-26 Laughlin

5512
30
5482

3) 4112.3 (1370.7
37
21
23

1370.7
4
5482.8

The 4112.3 just is to fence claimed
to be the 40 line by old papers.
This seems to check Elm stp but
make Section 200' long.

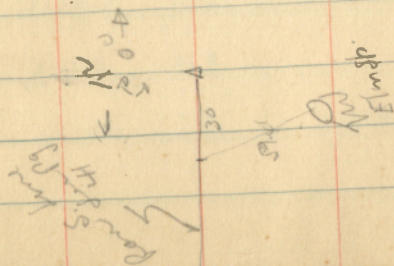
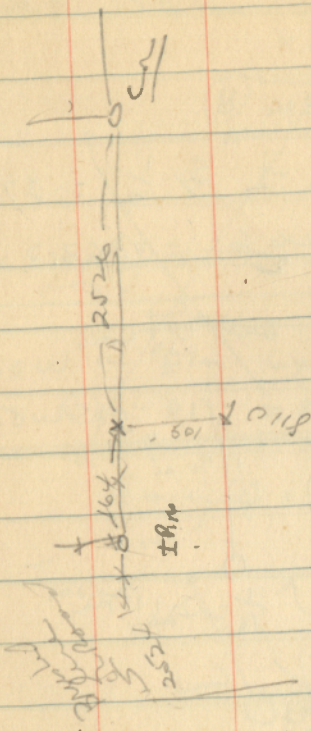
2126
104
5690

5285 8110
2640 164
7920 9956

7000 ?
8-
110
8110

Chain to Hwy Co

Page 57 60
JS
LM
AD



Note from CCC map.
Elm NW indicated
This Elm SE - there
is field on NW 1/4

4-141-26

Langh

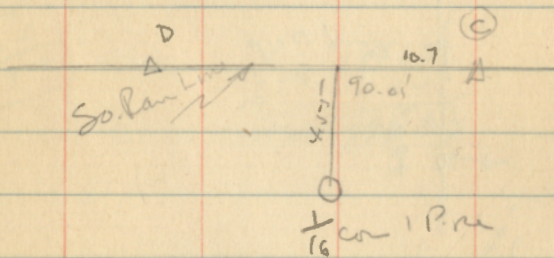
114-55

106.4
37
143.4

Dist Sw Cor to S $\frac{1}{4}$ = 2726.6

$\frac{2726.6}{2} = 1363.3$

Set $\frac{1}{16}$ cor

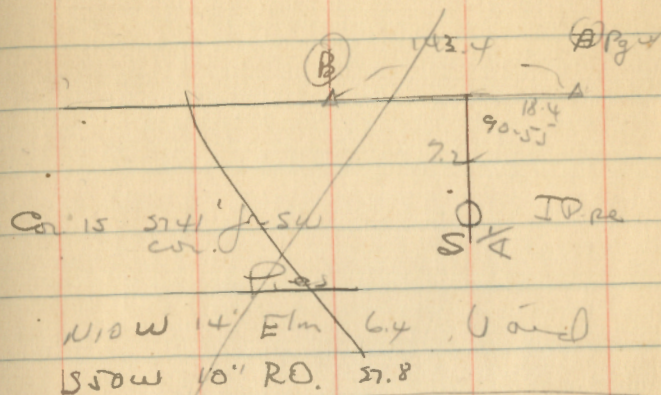


Post $\frac{1}{16}$ cor

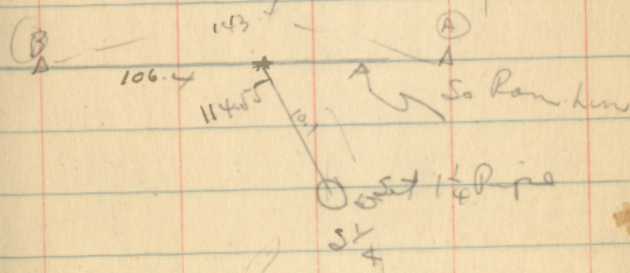
6" Pop S80W 7.3
4" Brk N40E 14.6

26 April 29 Col
33
37

Set $\frac{1}{4}$ cor



Found old Sqd Post.



1020 S15W 16.6

1220 S40E 21.3

16 Elm NWE 3.8 (old Post?)