

1336.55
elevation

U.S. C & G Survey BM P 184
1935

8x30 1320.00
Gelbros 26541 87.12
Japan 1232.88

Marquette
QUALITY

No. 1-123

MADE IN U. S. A.

30
13
2cc. 3cc. #
Earl Louis Schultze 11/12/63
472-16-7045 118043

*Additional
Fillers may be obtained
at Woolworth
Stores*

ASK FOR

NO. 1-123FR RULED

NO. 1-123FP PLAIN

0.05
97.61
97.601
97.61
00.05
97.601

PRESS LEVER TO OPEN RINGS



Any comments would be appreciated by the V. F. W. Headquarters,
Veteran Service Bldg., St. Paul (1) Minnesota.

WE HOPE THAT YOU ENJOY IT.

The best part or rather the most satisfying part, is when the syrup is served with pancakes, muffins, French toast or ice cream.

This must be clarified or strained before boiling.

It takes about thirty gallons of sap to boil down to one gallon of syrup.

The syrup is made from the sap of the hard maple trees, which are tapped in the early spring when it freezes nights and thaws days.

Bill Spain, former Sixth District VFW Commander and a North Woods

Pioneer, states: "With all our initiative and scientific 'Know How', we have been unable to basically improve on three things we got from the Indians; i. e., the canoe, the bow and arrow, and Maple Syrup."

A word about Maple Syrup



14th ANNUAL

Pure Maple Syrup Treat

VETERANS OF FOREIGN WARS,

Department of Minnesota



TO ALL OUR BUDDIES IN ALL V. A. HOSPITALS IN MINNESOTA

07070 - St. Cloud — 24 March, 1965 — 1200 - Minneapolis

From Northern Minnesota's Woods.

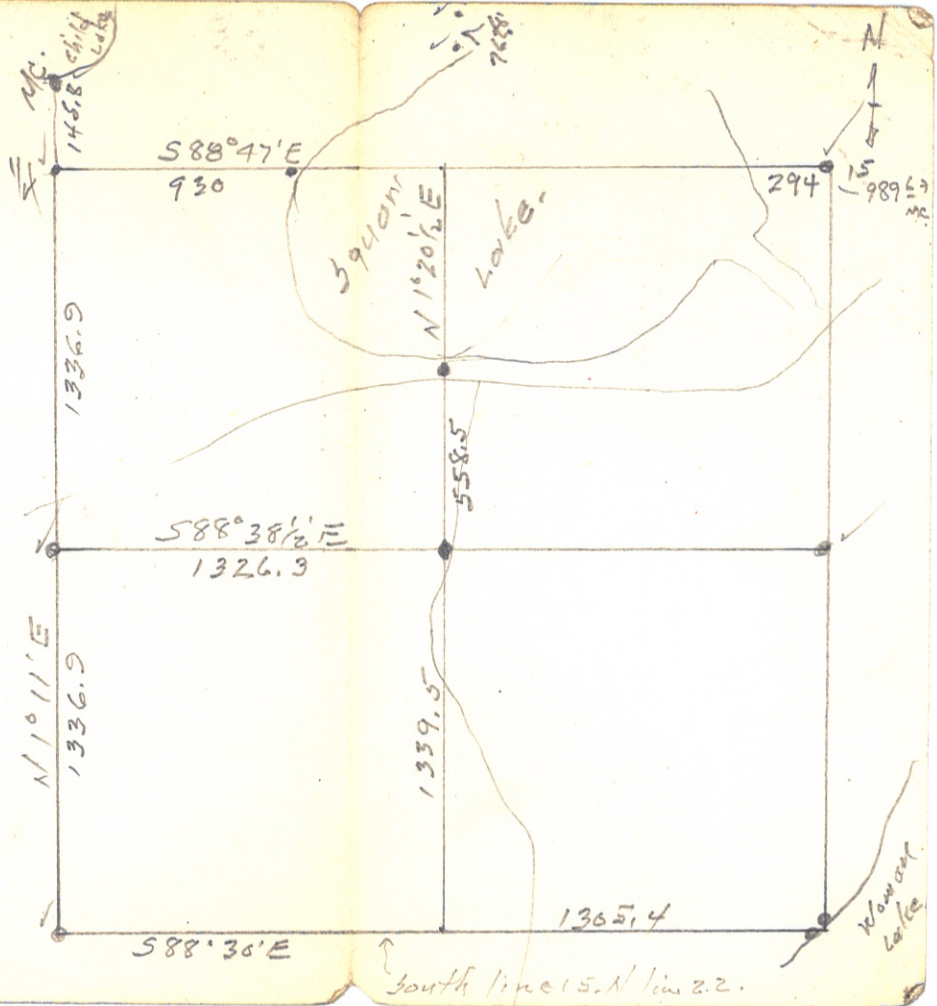
Our Earnest Wish Is That You Will Enjoy This Treat

THE V. F. W. WISHES TO THANK our suppliers who gathered this Maple Syrup for us: Carl Boquist, Ray Cash, Lyle and Ed Silker, and Mille Lacs Maple Products, Inc., Goplen Farm, of Onamia, Minnesota.

(History of Maple Syrup on other side)

west 1/4 sec. cor.
(out)
MC. 257

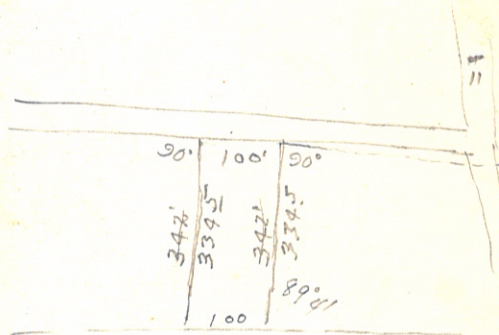
SW 1/4
15-140-29



768.6	$\frac{41}{19}$	768.6
356	60	.00245
<hr/>		38430
733.0		30744
		15372
		<hr/>
		1.883076

1302.2
733.0

569.2

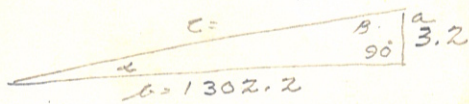


1st m. c/c cool. 8/17/67 RT FB W 32
Temp MC, W side W.L.
673 ⑤ 62' N, 153° W ⑤ 62

153 S

2203

12382 ft at 32' N of spk.
is = 11 & 13022 to 1/16 (Co. N)
array Dept ties)
Bkd.



$\tan d = \frac{a}{c} = \frac{3.2}{1302.2} = .00245737$
= 0° 8' 15"

- or .00245737 x 100'
- at 515.8' = 1.26371 ⑤ 50'
- at 955.5 = 2.340975 "
- at 1151.0 = 2.81995' "
- at 768.6 = 1.883076 "

8/21/67 c/c cool. c/dy Am.
RT, FB, me ⑤ 013 above at 5692
E & 1/16 (at 90°) = out 100' at 90° on
to N line at 90° 100', at 90°
from pt 5692

15-16-17-18-19-20

CROW WING COUNTY SURVEYOR
 for
 ROGER A. MUSTONEN



71.84' W of 15' COR to N. E. COR of Sec. 16, T. 122.54 N., R. 3.5 W. S. 11.91
 58.52' 2 122.54
 121.91
 180.80 Lot 4
 50.00 Lot 4
 50.00 Lot 4
 50.00 Lot 4
 44.00 Lot 1
 324.80 NW corner Lot 1.
 24.00 +
 348.80 front 1/2 acre.

For your convenience . . . frequently called Crow Wing County offices:

OFFICE	PHONE
Crow Wing County Attorney.....	829-0502
Crow Wing County Auditor.....	829-1481
Crow Wing County Clerk of Court.....	829-3667
Crow Wing County Court.....	829-3587
Crow Wing County Dept. of Social Services.....	829-0311
Crow Wing County Highway Department.....	829-1706
Crow Wing County Land Commissioner.....	829-0470
Crow Wing County Recorder.....	829-4701
Crow Wing County Sheriff.....	829-4749
Crow Wing County Treasurer.....	829-2821

PRIMARY DATE: SEPTEMBER 12, 1978

GENERAL ELECTION: NOVEMBER 7, 1978

VOTE FOR ROGER A. MUSTONEN ON ELECTION DAY.

Scott Pipehagen '78

11. July 78	6 hrs	Brennan.
20. July 78.	6 hrs	Parrish
9 Aug 78	6 hrs	Brennan.
17 " 78	6 hrs	"
18 " 78	4 hrs	Strannan
19 " 78	6 "	Nelson Lake

34 " @ 250 = 85.00

85.1,0605 = 5.14

10.28

7986

Aug. 78
Bill Capener

7 Aug	3 1/2 hrs.
8 "	5 "
9 "	6 1/2 "
16 "	5 "
17 "	6 "
18 "	4 "
19 "	6 "
25 "	3 "
26 "	4 "

43 "

10750

2 63 .025 18108
 51 20
 114 500

2335
 .025
 11675
 4670
 58375

345
 785
 820

46
 575

23346
 498

18365
 169

165285 50
 110190 31
 18365 19
 3103685

3101
 3098
 3002.7
 889.2
 3091.9

22 Jan 60 clear & mild - 3
 30 Jan '60 clear & mild EF
 CRSS
 WCLST

Survey for part of
 Grant Lot 7 Sec 11-14-81.

1930. 22 Jan '60. Ed. Part of
 to point. Start at E cor
 Tract for Sandy ^{From} ^{Orton}
 Pt. 14015' & run 125' to pt. (M)
 Rt. 99°00' run 175' Rt. 97°50'
 run 61' **

(0930 30 Jan. 1960 (Worbedo - Haack)

Ed & I To point and start
 Chainage from NE cor sec 3d chain
 408' To hub on E. Shore of Lake. Then
 cont. 1383' To hub on W. Shore of
 Lake. Then cont. to hub at 2128',
 then to hub at 2298', set hub at
 2640' Then cont. pushing line
 W.)

** to ^{SW} SE cor Sandy's thence
 Rt. 57°21' 200' to pt. of Bsq.
 64°40'

7 Dec. 59. clear mild 59° 60 EF
1200-1600. 8 15 CBZ
USSSR
H. Sandy

(10°) 59° 56' L thru line E
300 line John Wapen Lake
232^E Johns to line
8° 15' RT run 200'
run 200' RT. 46° 40' run
200' RT. 122° 39'
run 196^E to Johns SW cor.

may, 53° 15' W

59° 20'
14 Oct. 64. clear & warm A.E.
16 Oct 64 " " " " WSSR 5
19 Oct. 64. cldy & cool

Survey for Gov't. Lot 1
Dec. 5 T. 140 N R 29 W 5th PM Minn.
1960 14 Oct. 1964 Arnie Eckstroom & I
to G. Rottiers & pick up key to
north gate. Hunt for stakes.
Ernie Tusler says he set from
orig. Bto in 1915. Failing to
find them, I checked the
records at Walker for info.
Found nothing to help.
1800 16 Oct 64 same crew ask
Leo Mayres about stakes or
survey of Holiday Camp tract.
Says Ernie Tusler roughed it out.
Arnie & I follow fence to Man Lake
then west to Baby Lake. No
conclusive evidence
(checked from NW cor sec 33
141-29 south, nothing beyond
hub on so edge Moccasin Lake
set by Earl Schultze.)
1015 19 Oct. 64 same crew
continue hunt for 18th 3rd
parallel. Finally go to
N line, sec 8 & check it
for hubs & stationing. Find line
& hubs, but figures obliterated.
Date & Gov't Cadasteral Eng.
tomorrow 1330.
20. Oct. Walker met Bill
Okerman & Jim Eckstrom of USFS.
They will try from 2 mi W to

L for Δ across Baby
85° 55'
171° 51'
257° 46' use 85° 55'

run in cor 32/32. I plan
on running from NE cor 32
S to 10th. Sfd.

21 Oct. 64. Me to Dr. P.R. Beck. Shldr
& toe.

22 Oct. 64. Annie & I find
old hubs on south side of
3oc. 5 & from figures on two
of them & distance betw-
een them, verify stationing
set on 43867 & set hub E
55.7' at 43312. Nat 90° set
hub at 160.15' in old road,
open line to lake & set hub.

23 Oct. 64. Annie E, Dick Spear
& I set hub across Baby Lake,
from hub 275.25' north of 43312
Rt. 90° ran 176.9' int. L
85° 55' \therefore 2481.7' across lake
continue N. 245.8' 90° Rt. \odot
220.4', 90° N 300' \odot E 90°
125', set hub N at 90° in
edge woods. 39856' W of
 $\frac{1}{4}$ $\frac{4}{9}$

24 Oct. 64 set hub N of 125'
 \odot is 4738 N, continue 178'
to 3960', Rt. 89° 11' run N
88° 30' E 2398 to E Shldr Road,
continue to 3656 hub. & 25' to H20
Brushed W to sup. At road L. E
to line lot 1 is 53° 30' Lt.
Rattier & LaFontaine out.

28785	1610	215	39600
1809	4320	23	37343
30594	1125	445	2257
1484	445		41663
32078	730		3390
5265			45053
37343	10728/64		
4320			
41663			

28785 Hub N of Rd & survey
 29405 Hub for +
 30594 E ⑤ 1140
 37343 ⑤ E 13° go 4320'
 41663 ⑤ E 20° run 3390'
 45053 ⑤ E 11° run 3402'
 48453

26. c/warm. AE
 27 c/warm Am. Pth. c/warm S
 PH. WEST 9

26 Oct. 64. Same crew. Met @ C.E.
 # L.F. 0930. OK to make SW 60' street
 90° E road & take triangle out 30' south of
 Gate in other part of lot 7
 from Hub in wedge top rd.
 Lt. 53°30' Rly side 195' NE.
 E hub 180° SW. Run line 90° to
 Lake & NW to swp. Set stks on
 Lake side 80' SE from hub for
 NW cor. Beach & 37'± to H₂O.
 Set hub N of Top for edge of
 66' Road. 11° E shore & using
 present road.
 Rly spike is 215' ⑤ from Lake
 edge of Road.
 From 215' ⑤ hub on edge edge
 st wly to swp 1175' to hub +
 45'± to H₂O. stk for SW cor
 Beach 730' W of SE cor. 45'±
 to H₂O.

27 October, 64. Same crew,
 took boat from lower Magazine
 to hub (by Mike Schultz) across
 from Joe Cuddeboes Δ across Bay
 90° Lt 66' int L 87°18' : distance
 across Bay = sec. cor to hub = 13995'
 Start line 36°45' E (Mag.) hub at
 242', 400', & 599'. brushed
 to old grade.

23 Oct. 64. cldy & cool.
29 Oct. 64 " " " "
31 Oct. 64 cl & mild.
2 Nov. 64 " " " "
18 Nov. 64 cldy & cool

11

28 Oct. 64 same crew. Continue south to road at 30594 @ 114° E. 90°, then south 90° to 37433 @ E 90° 13', 30. 90° to 41663 @ 20° E 90°, 30. 90° to 45053 @ E 90° 11' run 340° to 48453. Rottier & Leo LaFontaine drove up. (Ran 29 Oct. over transit tripod leg. Broke) Dick, Arnie & I repair leg & Range pole at Dick's, then continue to 4342' to 52802'. Rt. 90° 158' set hub. Failed to find corner.

31 Oct. 64 Arnie, Dick & I run NW (cont'd) line of 66' road, NE existing road NELY setting hubs every 100' (1 to 9 lots) & +60' for street, & 1st hub across road for 66' NW. Started line NW at 90° for end of block. Ernie out @ CR. & L. LaF. No help. 2 Nov. 64, Mike, Arnie & Dick take over after I tell Mike of layout. Me to Dr. out on emergency.

18 Nov. 64 Mike & I met @ Jim Eckstrom & helper. Fail to find M.C. W side Baby & cor 32/33. Jim will ask to run from cor 2 mi. west. I show Mike new layout.

27 Feb. 65 clear, mild. Thaw.

13

17 Apr. 65. Clear & warm.

20 " " Clear & cool

1300 24 " " " warm.

27 Feb. 65. John Dell & I to Baby Lake check distances & set +
1/2 line \bar{c} SW street line. get dist
& 2 per. marking plot as changed.

12 Apr. 65. Myron Dell, CWA & Arthur & I
to Baby Lake. too much H₂O & S₂O.

17. Apr. 65. M.D., CWA & I ran
E line sec. 5 N. across lake. From
M.C. N 48695 to shore (+17) hub at
48865, ' across point,
from hub N side Pt E of Koffler,
N to hub on island 1000.0'

276.5 across tip of island
(hubs on island so one 30' ± N of
H₂O & N one 50' ± S of H₂O)

1370: Hub on N shore island
to hub N shore, hub N 81° 25' or
(From hub on island to shore 1280'

(4/20/65 Ran from island North)

24 Apr. 65. I fail to find I.M., Homer
says is in. thinks has seen another.

Ray B. Beise 15
WJST

Survey for parts of Govt. Lots
5 Sec 27, & Govt Lot 1 Sec. 34-140-30
& check H. Curran surveys & stakes.

90
73 25
167 25
29 55
19280

THE V. F. W. WISHES TO THANK our suppliers who gathered this Maple Syrup for us: Carl Boquist, Ray Cash, Lyle and Ed Silker, and Millie Laes Maple Products, Inc., Goplen Farm, of Onamia, Minnesota.
(History of Maple Syrup on other side)

Our Earnest Wish Is That You Will Enjoy This Treat
From Northern Minnesota's Woods.

TO ALL OUR BUDDIES IN ALL V. A. HOSPITALS IN MINNESOTA
6700 - St. Cloud — 24 March, 1965 — 1200 - Minneapolis



Pure Maple Syrup Treat
VETERANS OF FOREIGN WARS,
Department of Minnesota
14th ANNUAL

73
29 25
29 25
100 80
90 00
192 80

154.5
190.0
344.5

A word about Maple Syrup

Bill Spain, former Sixth District VFW Commander and a North Woods Pioneer, states: "With all our initiative and scientific 'Know How', we have been unable to basically improve on three things we got from the Indians; 'i', 'e', the canoe, the bow and arrow, and Maple Syrup."

The syrup is made from the sap of the hard maple trees, which are tapped in the early spring when it freezes nights and thaws days.

It takes about thirty gallons of sap to boil down to one gallon of syrup. This must be clarified or strained before boiling.

The best part or rather the most satisfying part, is when the syrup is served with pancakes, muffins, French toast or ice cream.

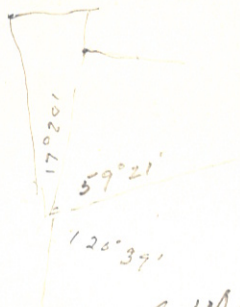
WE HOPE THAT YOU ENJOY IT.

Any comments would be appreciated by the V. F. W. Headquarters, Veteran Service Bldg., St. Paul (1) Minnesota.

190 to Lake

179 60
120 39
59 211

10/13/1966
Stuart - AP - 4-28-139-20



1M for
 Ray & I set our NW cor
 Lot 16 & Arthur's Pt. 319 ft
 NE cor turn $73^{\circ} 30'$ &
 Miss Curro's stk for line
 bet. Bastain & Forsythe.
 Use his line & at 346.5'
 hit 17.9' easterly at 90° . If
 my 1M & 21.7' in of old ind. from
 our 23' \odot East, as we ran
 154.5' \odot 23'E at 90° turn 90°
 190.0' to my 1M for Bastain's cor at
 Lake, or 5.1' out true line.

Bhd. 6/9/69

1300 cldy & cool 10/13/66.
 10/17/66 R.B.
 Sun & mild 10/18/66 W.S.

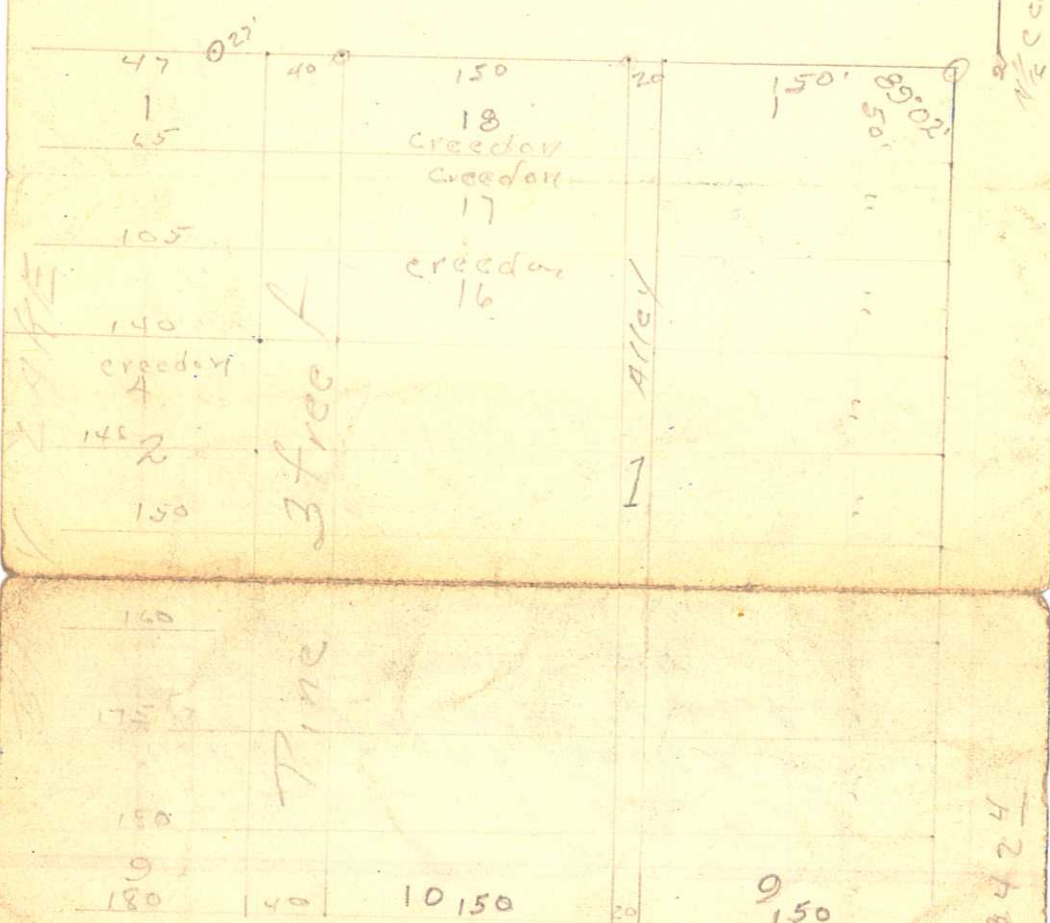
Start at G. Bastain's SE
 cor. run 30° E by Lt $83^{\circ} 07'$
 11 E line run 134' had
 (cont'd to 140' 1M.) not used.
 Lt 24.8' in 163 ²⁵ to 1M
 for G. Bastain's NE cor
 & continue 29 ⁵⁵ to H.
 Woodruff property; set
 3 rods ^{102.0' wd of this cor.} after 119 ft
 in between our E & 1M.
 1200 cldy & cool 10/17/66.
 Ray & I to Stuart's 10 cor
 NW cor Lot 2 & 1M for North
 set well pt. for N.W. 130' from NE cor
 Lot 2, set hub on extended
 line at $86^{\circ} 12'$.
 1000.
 10/18/66 Sun & crew. V.B. Lot 2
 div. From lake 130' \odot 23' W
 - Next Page

702.4
190.0
450.0

Tasters Park. D-42. N

1342.4 Plat 12432 Oarch.

1919 E.B. Horst.



LAKE STREET
W T BULL BWIN

IN ACCORDANCE WITH

588° 13' W

432.4

9147.7024
1342.4
1342.4
1342.4

1/4
015 013

Statement

29 May 62

Hackensack, Minn.

1959

Mr. Arthur Peterson
Walker, Minn

In Account With

W. J. "Bill" SPAIN

REGISTERED LAND SURVEYOR No. 2003

6 Prints of Plot of
Survey of Gov't Lot 1
& NE 1/4 of the NW 1/4 west of
State Highway # 34

Sec. 34 T.141N. R. 31W

5th. Prin Mer. Minn

Stand post

320

293

3 25

+72

North line 22 1/2 W to H20 F.M.
South line 23 1/2 W to B 1/2 S. # 72 1/2
to H20.

Creedan Lots 16, 17 & 18 Block 1.

" Lot 4 Block 2.

26866

13423

13 Oct 1966 cldy & Cool
17 " " " " " "

Ray Beise.

Survey for parts of Plat of
Arthur's point Lots 2 & 3.

1300 10/13/66. Ray & I start at Geo.
Bastain's SE cor. run Ely on Lake line
30' set in. Lt. $83^{\circ}07'$ run $11\bar{C}$ Bastain's
E line 134' hub, (continue 6' to 140'
~~set in.~~ (not used) set IM at 134'
Lt. $24^{\circ}09'$ run 163^{25} to IM for
Bastain's NE cor. & continue 29^{55} =
192.8' to H. Woodruff's cor.
set straddles 102.0W of Kure's
cor. after jiggling in between cor
our L and IM.

1200 10/12/66. Ray & I to Stuart's
locate NW cor Lot 2 & IM for
North-Woods. set well point for
H. Woodruff 130' from NE cor Lot 2,
set hub on extended line Lt. $86^{\circ}12'$
100 10/18/66 same crew check angles
Lot 2. div. from lake 150' @ $23'$
W. set on IM for NW cor Lot 2 Plat
of Arthur's Point sight NE cor turn
 $73^{\circ}30'$ & miss Curio's stake for line
between Bastain & Forsythe.
Use his line & at $344.5'$ hit
17.9' easterly at 90° of my im
& 21.7 " of old IM. From our
23' @ east. as we run $154.5'$
@ $23'$ at 90° . turn 90° run 190.0W
to my IM for Bastain's cor & locate
or 5.1 on true line.

Survey for parts of Lot 2
Block 1, Plat of Arthur's Point,
Cass County, Minn.

69
195
10 July 1967 Cl & Worn GU
DnLE word. WWS.
A

77 Survey for part of Lot
12 Plat of Arthurs point
start at NE cor Lot 6 &
extend Easterly line of said
Lot 6 NWly $41^{\circ}2.0'$ to pt. Lt
 $63^{\circ}24'$ run 90' Lt $26^{\circ}04'70'$ to
a point, on the line for
E² Lot 5 extended; thence
Lt $90^{\circ}34'$ run 78.1' to 1M
for E $\frac{1}{2}$ of Lot 5, Lt 90°
run 150' to pt of beg.

127.25
93

220.25

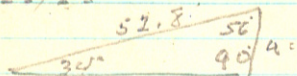
119.45

339.70

60.30

400.00

4/26/68.



$a =$

$a = 29.52$

$$\cos 8 = \frac{b}{c}$$

$$.82904 = \frac{b}{52.8}$$

$$b = 43.77 \text{ or } 43.8$$

5781812.6116
97959

5879771.6116

179.60

87.53

92.07

87.53

179.60

92.07

140

57

Flort,
N line 34 - 1/2 sec West.
39.08 ch. 1130.14
2605.68 usg. 378.1
1508.24
221.14 shut 896.3
2404.54
1202.27 RL
2424.8 Trunk.
1212.4 + 1/16.

1975V 20 May 68
23 " 68
4 June 68
19 " 68.

EH.
WJSM
23

- Survey for Lot 3 Block 1 Dawes
3rd. Addn. Pine River.
- 6th 20 May 68 Elmer Hurd & I to Pine River,
check map in Donhundgren's office,
look for corners around & near
property, but find nothing that
fits. 1M's at Land O Lakes & Am.
Legion have been pulled or bent all
but one.
- 7th 23 May 68 Elmer & I still looking
for something that fits. Will check
at Walker. Plot starts NW cor Block 2
O.P. P.R.).
4. June '68 Elmer & I find NE, NW
cor. & 2 lot 1M's on Norway Ave.
then NE cor Block 2 O.P. We @ 23
in street to miss Bldg, cars etc &
run 60' for street, 180' Block 2, 66'
for Front St., 50' R.R. R/W. miss
& Main Track 64.05'. 100' for R/W.
set nail for @ corners Block 1
Dawes 3rd Addn. Find 1M for SE cor.
Block 1.
- 6th 19 June '68. checked @ Durkee (Mick Jones)
on surveys. Find bent 1M (buried) for
NW cor Barclay Ave & one 70' towards
the tracks. Ran out Lot 3 Block 1
from what we could put together.
- Find Bldg 0.85 to 1.6 on R.R. R/W @ 0.85
in Norway Ave. set 1M's on corners
except SE cor is 125' from SW cor & 0.3'
from Bldg.

THE V. F. W. WISHES TO THANK our suppliers who gathered this Maple Syrup for us: Carl Boquist, Ray Cash, Lyle and Ed Silker, Millie Lacs Maple Products, Inc., Goplen Farm and Holberts Fort Millie Lacs of Onamia, Minnesota.
(History of Maple Syrup on other side)

Our Earnest Wish Is That You Will Enjoy This Treat
From Northern Minnesota's Woods.

TO ALL OUR BUDDIES IN ALL V. A. HOSPITALS IN MINNESOTA
00700 - St. Cloud — 22 March 1967 — 1200 - Minneapolis



Department of Minnesota

VETERANS OF FOREIGN WARS,

Pure Maple Syrup Treat

16TH ANNUAL



A word about Maple Syrup

Bill Spain, former Sixth District VFW Commander and a North Woods Pioneer, states: "With all our initiative and scientific 'Know How', we have been unable to basically improve on three things we got from the Indians; i. e., the canoe, the bow and arrow, and Maple Syrup."

The syrup is made from the sap of the hard maple trees, which are tapped in the early spring when it freezes nights and thaws days.

It takes about thirty gallons of sap to boll down to one gallon of syrup. This must be clarified or strained before packaging.

The best part or rather the most satisfying part, is when the syrup is served with pancakes, muffins, French toast or ice cream.

WE HOPE THAT YOU ENJOY IT.

Any comments would be appreciated by the V. F. W. Headquarters, Veteran Service Bldg., St. Paul (1) Minnesota.

Flory

3
4
47
199
3
47
199
3
669
1
139
31
449

13008
 345.

 65040
 52032
 39024

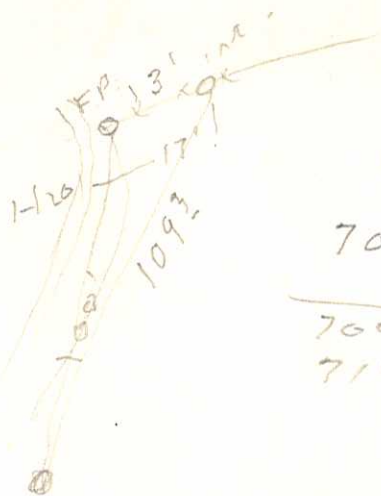
 44.87760

Note. 32' N of Δ 316 to
 300 pt at RL3.

Flury. cldy. cont. wind 7/31/68. JJ
 140-26 LJ
 WSS

1150. We rechain Lake W to
 Δ 608962

Then from $\frac{1}{4}$ cor W 297' hub
 so of new garage. 30 \odot N 38.69
 far true line. Δ at 366.290 N.
 47.64' E Δ at 378.190 N 49.2'



70° 51'

14

70° 65'

71° 05'

cloudy & cool. 10/5/68

BA.
Flon
WIS

334.1 N line

E line 15' ± E of fence

460' 10/6/68 clear

same crew. Rt. 84° 50' run

215' Rt. 61° 50' run

200.0' Rt. 120° 47' run

270.2 L 1 run on shore BL

Rt. 71° 05' along road then

100' , Rt.

334.1' at top.

5 1/4 runs 270'

345
212
322

Any comments would be appreciated by the V. F. W. Headquarters,
Veteran Service Bldg., St. Paul (1) Minnesota.

WE HOPE THAT YOU ENJOY IT.

The best part or rather the most satisfying part, is when the syrup is served with pancakes, muffins, French toast or ice cream.

This must be clarified or strained before packaging.

It takes about thirty gallons of sap to boil down to one gallon of syrup.

The syrup is made from the sap of the hard maple trees, which are tapped in the early spring when it freezes nights and thaws days. Bill Spain, former Sixth District VFW Commander and a North Woods Pioneer, states: "With all our initiative and scientific 'Know How', we have been unable to basically improve on three things we got from the Indians: i. e., the canoe, the bow and arrow, and Maple Syrup."

A word about Maple Syrup

366.8
111.9
378.1



16TH ANNUAL

Pure Maple Syrup Treat

VETERANS OF FOREIGN WARS,

Department of Minnesota

175 46
87 58



TO ALL OUR BUDDIES IN ALL V. A. HOSPITALS IN MINNESOTA

00700 - St. Cloud — 22 March 1967 — 1200 - Minneapolis

From Northern Minnesota's Woods.

Our Earnest Wish Is That You Will Enjoy This Treat

THE V. F. W. WISHES TO THANK our suppliers who gathered this Maple Syrup for us: Carl Boquist, Ray Cash, Lyle and Ed Silker, Mille Lacs Maple Products, Inc., Goplen Farm and Holberts Fort Mille Lacs of Onamia, Minnesota.

(History of Maple Syrup on other side)

95 100 100 100 100 100

Flory

7/11/68

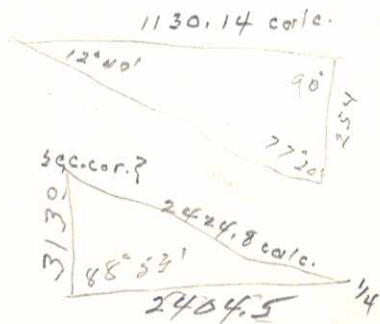
366.2 $\frac{1}{4}$ cor w to Hub

E shore Bass Lake.

378.1 to Hub in H20 - Lt

90° 254° Δ across Lake

285 \pm 77°20', 154°40'



at hub in H20 go 90° N 49.2'

at hub on w shore go 90° N. 196.2

7/11/68 C/E Hot.

7/12/68 C/E Warm.

3-34-140-26.

J. W. J.

7/11 Jim Johnson & I find $\frac{1}{4}$ $\frac{27}{34}$ open line $\frac{1}{4}$ to M.C. East, fail to find M.C. E shore Big Bass. Break out w to lake. & set hub south of garage.

7/12, Jim & I continue line into H20, set hub at 366.2 & 11.9' in Lake, 90° Lt. 254° Hub. set hub across lake. Δ get 77°20', continue w. set hub & Pitets

21/47 corlc, 7/29/68

Jim, Lynn, & I rerun line at 896.3'

175°46' N 85°W 6' in H20

N 87°E 9' up 7.3'

N 20°W 8' N.P. 170'

Hub 896.3
N 66.2°, 204', 349'
w of Lake

28°
60'

17 June, 1968 clear m.

R.S.
O.W. 75
W.S.V.R.

Survey for part of Gait Lot 4
 sec. 34 T. 141 N. R. 27 W. 5th Prin Mer. Minn.
 110° 17 June '68 Red, Owen Schleisman & I
 skylite line Owen had brushed, &
 open line bet. seci 34/35 & jiggle
 in between NW & SW cor. Lot 1
 Plat of Mar. home, 101.8' so of
 M.C., from which deflect Rt.
 148° 20' (int L 31° 40') & run N 31° 40' W
 775.0' bet int. on shore Treline
 lake, Lt. 6° 15' run 250' Pt of Reg.
 Lt. 49° 00' run 125.0' along shore, Lt.
 77° 00' run 132.0', Lt. 72° 30' run
 64.8' Lt. 83° 00' run 150' Pt. of Reg.
 .31 Ac. ± 2115 18th. checked & turned
 Ls at NW, SW & SE cor also NE.

70 July 68

11 " 68

12 " 68

27

Survey for Gov't Lot 3 Sec. 34
T140N. R. 26W. 5th Pr. in Mer. Minn.
10 July checked @ Mr Flory on Job.
11 July 68, Jim Johnson & I to Big Bear Lake.
Locate N. 3rd line $\frac{1}{4}$ E, Hub & MC.
& Lot 1 stakes by D. Anderson. 1/4 old.
Open line & diggle in $\frac{1}{4}$ # MC East.
Project line west.
12 July 68.

4 June 1970 c/s warm BH. 29
6 June '70 c/s warm WJSDK
8 June '70 c/s warm
9 June '70 c/s warm, ply, r/gm Str

Survey for port of

Govt. Lot 1 Sec. 11 T. 139 N.

R. 30 W. 5th. P.M. for Plot (7/102)

4 June '70. Bruce Hanson & I to 4 point

Lake. Set on spike by R. Bekkeider

sight 3 sec. ^{1/4} on plange, miss MC

by 35' south. Jiggle in between
moving 9' N, open line.

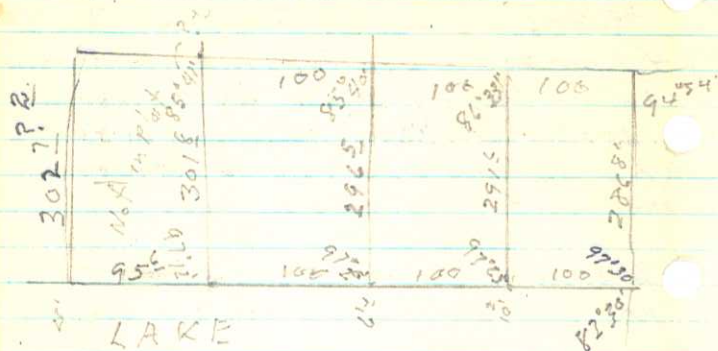
6 June '70. Same crew chosen E from
MC 300 set hub check E of Brosson
& buyers. They get 285' on back,
200' shore line & set E (back) to
300' line. We open back line of
Tract turn $101^{\circ} 06'$ E to 3 run 285'
set hub. changed 300' pt to 299' min tract.

7³⁰ June '70 Same crew set on
18' hub 285 to 299' pt on N line
sight 289' at plange at $101^{\circ} 06'$
back line to ~~300~~^{1/4} line. Find
some evidence of old line to
port of N line. No find hub. Find plange
set on MC sight 299' hub (E) plange
at 76' 30" run 300' along shore, Lt
 $87^{\circ} 12'$ run 302' to pt 285' ~~300~~³⁰²
From pt. 285' E. of 290.0' Rt. $10^{\circ} 35'$
to Lot 1 Brosson Not in plot.

1300 9 June '70 Same crew V E R. Gills
pic as to corners. Were set by H. Guro
set on SE cor for Bethwell set

280	179	6-	28.9	250	140
165	82	2a	173	51	1627
<hr/>			241.9	301.8	3022
2920	93	2a			

89°52' No sec line to E line



241.9	135
299	142.7
<hr/>	
5409	277.7

111.2

62.

152.5

325.7 SE cor. OLA +

89	43
90	17
<hr/>	
179	60

$$\begin{array}{r} 48 \\ 14 \\ \hline 62 \\ 3 \\ \hline 186 \end{array}$$

$$\begin{array}{r} 54 \\ 3 \\ \hline 162 \\ 20 \\ \hline 182 \end{array}$$

Holmes-Bleich

30 June SA D#5 W S W S S.

		0	4	4	4	monthly (11)
9 July		6	0	6	6	10 B.
21	11	0	8	8	8	" "
22	11	0	4	4	4	" "
		<hr/>		6	12	18
				18	18	

Brettson.



Pure Maple Syrup Treat
VETERANS OF FOREIGN WARS,
Department of Minnesota

19TH ANNUAL



TO ALL OUR BUDDIES IN ALL V.A. HOSPITALS IN MINNESOTA
12:00 - Minneapolis - 18 of March 1970—12:00 St. Cloud - 20th of March 1970

From Northern Minnesota's Woods.
Our Earnest Wish Is That You Will Enjoy This Treat

THE V.F.W. WISHES TO THANK our suppliers who gathered this Maple Syrup for us: Carl Bogquist, Lyle and Ed Silker, Mille Lacs Maple Products, Inc., Goplen Farm, and Holbert's Fort Mille Lacs, all of Onamia, Mn.; Roman Klisch, Bowlius, Mn.; Louise Joyce Richards, Wahkon, Mn.
(History of Maple Syrup on other side)

A word about Maple Syrup

Bill Spaln, former Sixth District VFW Commander and a North Woods Pioneer, states: "With all our initiative and scientific 'Know How', we have been unable to basically improve on three things we got from the Indians; 1. e., the canoe, the bow and arrow, and Maple Syrup."

The syrup made from the sap of the hard maple trees, which are tapped in the early spring when it freezes nights and thaws days.

It takes about thirty gallons of sap to boll down to one gallon of syrup. This must be clarified or strained before packaging.

The best part or rather the most satisfying part, is when the syrup is served with pancakes, muffins, French toast or ice cream.

WE HOPE THAT YOU ENJOY IT.

Any comments would be appreciated by the V.F.W. Headquarters, Veterans Service Bldg., St. Paul, Minnesota - 55101.

1330
155
B28.75

86.98
86.50
53
100
85.52

80.55
45
80.71

87.116

44

87.38
86.45

Sta.

+ Hl. —

c/ev.

BM.

1.55

1330.00

H₂O 10.82

1339.27

1.30 Top of ^{highest} ~~water~~ tank

1328.45

NW cor

1337.97

NW B.M. Microow Tank 23'E 49' 30 200' int.

1328.45

10.82

1339.27

1.30

1337.97

235
895
3245

8/18/70

GP.
MS
WJST

c/dy & cool.

1030 18 Aug. 70.

To 4 pt, Bresson & Dam.

¹³⁰ 1.55 below 3.30 mark.

Set on Base line 200' S. 111C
sight in c plumb & Rt 7° 40'
95.71 to Lat cor.

From 200' in L ± 87° 12' to
in 285° SW from 299' in

Set on 285' in sight 299
Plunge Lt 101° 10' run 2245
to E line

From 295' Rt Rt 10° 27' run
150.9 to Lat cor back side

From 265' in sight 299 Plunge
Rt 95° 08'

18 June 70, Partly cloudy cool B.W.
19 " " " " mild G.P.S.I.
W.J.S.T.

31M, 100' apart for back
of lots (to W) $94^{\circ}39'$
to in on shore set by AJ
Bresston

15° 17 June 70 Bruce, Gary & I
brush shoreline. Change ^{from} 1M to
get good base line. This changes
L (S to W) Rt from SE cur to $94^{\circ}34'$
run 286.8 to 1M on shore.
Rt $82^{\circ}30'$ 100' Rethwill lot.
100', Lot, 100' Lot Lt. $1^{\circ}27'$ $95^{\circ}5'$

15° 19 June 70 same crew. set on
2nd on base line sight both. Lt
 $97^{\circ}25'$ run 291.6 to back of 110' N
set on \approx 4 base line Rt. $94^{\circ}20'$ run
296.5 ft. to back of.

From stk 285' sly N line Rt $10^{\circ}29'$
(S to W) $\approx 95^{\circ}15'$ 301.6 to lake
150.8 to NE stk 2nd lot.

From 299' hub on N line E 689
to hub on hill & from said hub 173' E
to sec 11th cor = 241.9 + 299 Lk hub cor
= 540.9 389' 52" E 277.3 1M.
Rt $95^{\circ}40'$ (P) 325.1 to 285' 1M.

30 June 70 c/worm.

1 July 70 " "

2 " 70 " "

BH
WJL:W

33

Survey for 1 acre or as
deed calls for the west
208.17' of the south 208.17'
of the SE $\frac{1}{4}$ /NE $\frac{1}{4}$ sec. 26-138-30.

30 June '70. Bruce & I to P.R.
see Robt Geary Mgr, MRL Re: Ida
check map at Don Lundgren's
office.

Set on $\frac{1}{4}$ east side 36.
sight N $\frac{1}{4}$ cor. Lt. 90° 17'
574.65 @ N 12' ran 351.2 @ S 12'
1 July 70. 1100-1700 same crew
from @ ran in. 392.85' = 1318.1
as called for to $\frac{1}{4}$ no find.

Re chain lines.

2 July 70 same crew check for
corners. Axel Johnson shows us
NW cor of SE $\frac{1}{4}$ /NE $\frac{1}{4}$. Oscar
Boquist goes with us to E $\frac{1}{4}$ cor. @
in NE cor. has Leverington field.

No one home at Gardner's.

6 July '70 1100-1730 same crew
A. Carl Peterson funeral 1000.

Don Coulter checked with us
Re his job east of us. Tells us
of NW cor of NE $\frac{1}{4}$ /NE $\frac{1}{4}$ in imp.
& shows us 2- $\frac{1}{4}$ cor's in road.

Bruce & I set 3 tks in m & W
1/4 line & turn 90° 34' 30" on $\frac{1}{4}$
run 30. hub on 3/4 dr 371 &
600' pt marked. No find cor.
309', 267.5'

8 July 70 cl. & warm.

10 " " cl & warm.

17 " " cl & warm

18 " " " "

35

8 July 70 1400-1800. Same crew
continuing so hub at 1320.0
Just past old fence cor. at
1314.6. Brushed line to
field.

9 July 70. Bruce & I to Walker
check records (not much)
J.W.C. set so $\frac{1}{4}$ cor. (in lake?)
E $\frac{1}{4}$ 35 in. Home PM.

10 July 70 B.H. & I to P.R. Gardner
knew of no corners. Lenny Emery
not sure. We chain from 1320' hub
& at 1305.6 hit 1415' E of
M.H.D. 3RR & 7.0 W. of another
in Q#2 = 2625.6 our hub
on R E-W $\frac{1}{4}$ line so to Q#2
Mr Pierce knows of no 1415.

1300 17 July 70. Bruce, Gary & I to
P.R. check $\frac{1}{4}$ 35/36. M.H.D. crew
No points
set on Temp $\frac{1}{4}$ cor west 26.01'
90° N. 405.6 @ E 12.1 at 90°
N 90° run 960.1' hub, 90° E hit 5'
so of $\frac{1}{4}$ cor. = 1370.7'

1400 18 July 70 Bruce Gary & I run E-W
 $\frac{1}{4}$ line west hit Gardner's fence
cor, been in 39 years, $\frac{1}{4}$ in west.

18

Whitefish Lake

Swanson

1600-2000

115' along shore

Lt $92^{\circ}45'$ run 174'Rt $23^{\circ}40'$ set hub N. Rd.

1020-1925

14 Aug. Gary, Mike Scanlon

E 1 to Swansons change L from 174° hub to $21^{\circ}45'$ Rt (miss Gate post

to S.) after brushing off.

run 378^{35} Lt Rt. $5^{\circ}39'$ near Gaterun 641° hub on hill Lt edge Rd. 641° hub Lt $406^{\circ}40'$ run 462° set straddles forRt E line, 468° nail in Road. E line

31 Aug. 70. Gary, Bruce & I to Swansons

open E line, jiggle in between sec.

& 1/2 car. + straddles $42^{\circ}E$ of 462° hub is at $466^{\circ}2'$ + E line. Lt. $97^{\circ}54'$ E run N $00^{\circ}14'E$. 380.' to set 1M.

So. edge Mud Lake.

(Home 1930. late for Herb)

190⁺5
100✓4-5 Aug '70 cl & warm GP
8-14 " " Ptly clat. " WSSR
6-31 Augi " cl & warm - GP. RH. Wds.

39

4 August '70 cl & warm
23 Sept. '70 cl & mild
24 Sept '70 cl & mild

G.P.
W.S.K.
Don McAllen.

41

Survey for South line Gort Cat

7 sec. 11-14-31. (Sandy sandstone)

4 August '70 Gort & I to beach lake
start at N $\frac{1}{2}$ corner N-S line, open
line east & picket alignment,
follow old cuttings

¹³⁰⁰23 Sept '70 Don McAllen & I to
beach lake. set on old hub after
straightening, sight 154 on $\frac{1}{4}$ line
plunge run east, breaking to
shore set hub on E edge road. ¹⁷⁹⁰

24. Sept. '70 Janie crew & Louie
Trench & boat locate line on point
continue E. opening line
hit 15-16' south of B.C. line
set Δ stations 1800.

15/14/70

~~N West / Govt Lot 3~~ John H. Mason etc
~~16-142-31~~

Jim Dawson.

B 46
JWC
1916.

4C ✓

6 Oct. 1970 cl & mild.
14 " " rly cloudy coolDM.
J. DeV
WJST

45

Survey for NW⁴/NW⁴ Sec. 7-141-30

6 Oct. 1970. Don Mellem, Johnnie
DeVault & I to Walker, check
records, then to Tony Schoenhofen's
Find Brass Cap (43660) on W¹/₄
line sec. 6. On trap road west
line sec 7 we locate 3¹/₄ cor.
called Bill Ockerman - he called
back next AM 8:05, gave ties
to ^W 1/4 cor.: 9" Oak 3.55 1/2 E. 30.5'
5" Oak 3.57 W 16.8'
Steel Post N. 81 E. 21.1'

called MHD, Bemidji & Brainerd.
Brd says NW sec cor (BC) in
according to 1940 R/W map.

14 Oct. '70. Same crew locate
1/4 cor in concrete, jiggle in
between 3¹/₄ & 1/4 cor. run N.
miss 43660 BC 0.5' W. chain W
656.70' fail to find BC., set
hub & tack. Quit for day 1800.

15 Sept. 75 at 8 cool, NW 33 R
16 " 75 cloudy, clear Chris Zeece
17 " 75 eldy & mild.

47

Survey for part of Govt. Lot 4

Sec. 6 T. 59 N. R. 26 W. 4th. Prin. Mer. Minn
(Horse Co)

1500 15 Sept. 1975 Chris Zeece & I met
at Ranger station, drive to cabin.
Drive to De Vere's - not home, so we
look for I.M. as per plat furnished
by Jack Shannon, Co. Surveyor.

No I.M., but find hubs E & W
line from lake to road quit 1900.

Ties to NE cor Lot 2. 9:14/75 AM

7" Birch West 15.5' (Mr De Vere)

9" Poplar N 80° W 22.6' (called 0200)

0900 16 Sept. 1975, Chris & I tie in NE
cor. as surveyed by Robert Wallace
#5070. Then locate I.M. for M.C. on 1/4 line
E-W, 3 W Govt Lot 4, also M.C. on Trap
line between T. 26 & 27. Mr De Vere

shows us line between Govt. lots 4 & 5

Chris found I.M. on ridge. We fail to

find I.M. for NW cor. Lot 4. We find

NE cor. I.M. & follow old cutting

west. Find 3 hubs with nail & 4 pickets

as we open line west. quit 1930.

To Marcell for groceries 1400-1445

Groc. 4 1/2. Chris tried to call his dad.

0930 17 Sept. 1975. Chris & I return

papers to Mr. Gerald De Vere & he showed
us a survey map giving the following
BT for N $\frac{1}{4}$ cor 1/6: N.P. $7^{\circ}3.35'E$ 49.6'

No find 9/25 W.P. $7^{\circ}3.28'W$. 54.0'

Chris & I finish opening old line,
chain same E & W, at 223.76' old
hub, we replaced, found 3 hubs,
set nail at 800' Kreugers corner
at 1050.0 @ 15' south to road &
continue W. at 1481.92 we are
just south of 4" wood stake blazed
3 sides E-W & S. No find 1M.

We then jiggle in between hub
at 223.76 & one just west, continue
W. to point 520.76' & deflect Lt.
 $76^{\circ}30'$ run 88' set nail for traverse on
road. Dark quit 1900

Not rd.
" Fincastle

Windy mid 22 Dec. 1975 T Scott Hall 8
W 3 33' R

?? GL 6, 3-139-29 ??

51

Survey for Tract 3 Gov't. Lot 4

Section 3 T. 139 N. R. 39 W. 5th P.M. MN.

^{10:10}
^{12:12} T Scott Hall #1 to Island Lake

locate to car 3/2, 1M 33' W. also 1M

120' N, ~~Bent~~ Bent - (we straighten)

240' - some out-borrow pit.

checked shore line - found 1M

none chain exact dist. called for

Dark quit 1600. Rd. Scott #10⁰²

354.45 +

Show Bill Green what
we have done. Mrs Ester
Berndt had me set capped
1 1/4" ~~cast~~ well point 1" W of MC.
E longer 3/4" pipe on edge of
road. Had said she would pay.
She talked Bill Green to pay
for them. He furnished the point
I paid \$1.03 for the cap. Bill
said he would pay for it.

2 man crew 20 hrs.

16 hrs -
3 IM's
4 hrs 1 IM.

55

(N line of N 82' of Govt. Lot 5-18-140-30)

open line hit NE cor. (4" Tormarc
on line, tied it bent southward.)
set 3/4" x 36" IM 75' E of NW cor.
~~set~~ on W edge of road. & 3/4" x 24"
at 123' E, under Hi line, & 1" x 18"
brown pipe on ridge E of swp.
Bill not too well. 4 hrs.

1300 14 May 1976 Bill Hyland & I
open line for N 356.6' by pickets
on IMs at Lake & W edge of road.
~~set points~~ IMs along road are
bent, hit by grader.
set points on N line, used
L glass to get good opening
(chain south 356.6') set straddles
by Transit on L glass point.
set on iron for NE cor Landackers
right IM for NW cor, set nail at +
set on + turn 90° from pt on N line
Just miss Flag on Lake 1700

MC or Raf. E shore of Baby

RRY spike in $3/4"$ I.P.

T. 23 18" NR, 5.25 W 25.7 cutr bole

9" Twin Birch N- 17.2 " "

chain 73' ± W, RRY spk to H₂O.

RRY spk E 239.88' nail

slope dist. 153.2' L 8° 58'

∴ B Horizontal dist = 151.33' to nail

Mon nail at 143.6' hit .15 to sec. cor.

608.81 H₂O E to sec. cor.

73

239.88

151.33

143.60

608.81

5/1/76 W. N. G. B. W. 6 hr Dan W.

5/15/76 Gary H #1 5 hr Baby Lk

5/13/76 checked books at etha

5/12/76 Bill H #1 6 1/2 hrs

clear & mild 7 May 76 - W. Hyland - W. S. K.
clear & warm 8 May 76 - Gary Houser - W. S. K.
clear & warm 18 May 76 - W. Hyland, W. S. K. 67

Survey for Gait Lot 10 sec. 8

T. 140 N. R. 29 W. 5th. Prim. Mer. MN.

1000 7 May 1976, Bill Hyland, Gary
Houser #1 to cor. ^{8/10} run N 6° 30' W

following the extension of the line
between 14/P. Brushed N to Baby Lake.

No find 1M at BTs. 4 hr quit 1700

1300 9 May 1976 Gary H #1 to West side
Baby Lake set on MC on line ^{8/9} sight ^{8/9} $1/4$ $1/9$

plunge get alignment for line East lake.
Gary sets 2 marks in line & brushed
same. Picked me up. We fail to find
MC but found old cuttings on our
line. quit 1800 5 hr

1100 18 May 1976 Bill Hyland #1 to MC #89

East shore Baby Lake. Bill found
RRY spike in 3rd I.P. 3' ± E of our nail
& .15' south of our line. Set on RRY spk
sight $1/4$ to MC West shore Baby Lake, Marge
run East open line at 607.81' hit .15
So. of sec. cor.

Chain N set flag at 561' Gait. chr. & at
600.0' nail, at 660' H₂O, checked
for BT. 7 stamp 375° W quit 1730

for
ROGER MUSTONEN



3-28-189-29 LL Add.

1095.75 300 25 + 33'

To nail on his neck

1136.75 talk

33.00 rd.

1169.75

1095.75

33.00

1128.75

For your convenience . . . frequently called Crow Wing County offices:

OFFICE	PHONE
Crow Wing County Attorney.....	829-0502
Crow Wing County Auditor.....	829-1481
Crow Wing County Clerk of Court.....	829-3667
Crow Wing County Court.....	829-3587
Crow Wing County Dept. of Social Services.....	829-0311
Crow Wing County Highway Department.....	829-1706
Crow Wing County Land Commissioner.....	829-0470
Crow Wing County Recorder.....	829-4701
Crow Wing County Sheriff.....	829-4749
Crow Wing County Treasurer.....	829-2821

PRIMARY DATE: SEPTEMBER 12, 1978

GENERAL ELECTION: NOVEMBER 7, 1978

VOTE FOR ROGER A. MUSTONEN ON ELECTION DAY.

cloudy, sunny mild.

2/21/81 Note: Chain from $\frac{1}{4}$ 819 set to nail w L Bay

2/26/81. 5133, Don Yachum et al
to Baby bk. Open line N to N
89054 $\frac{8}{17}$ 625⁹¹ to bay (nail)
Change to 89°53' (N 5°15' W Max)
set on nail N edge Bay sight nail S
edge plunge rt. 21°45' 37.28% nail
from N to R line - set on # 2 ft. 21°45'
583.7' across bay nail to nail
Line North.

6/3/76

6/3/76 Cl & Hot
6/11/76 Cl & Hot

Garry H. WJST

59

Feb 29 1981

3rd June Garry et al set off L. 9 hrs

- chain 40' first, then 255' fail to
find IM. Try North & South 50-60°
No find. 0700-1700.
- 8 June 76 1100. Garry Howser et al
⑤ 1° SW 9/10 to miss 15" gap low, 90°
brush out line 295' search for
IM. No find. Turn 42° 20' NW to N.
plunge, brush out 184' set
nail at 165' & 184. search for IM
at 165' as per Plot Moccasin Point
No find. continue 555' for MC. No find.
W Jane same crew search for MC
as per Homer Tustler's location
No find. Open line L to L N to
1/4 cor quit 1700.

$$\begin{array}{r} 17960 \\ 8023 \\ \hline 12499037 \end{array}$$

$$\begin{array}{r} 17960 \\ 8149 \\ \hline 98016 \end{array}$$

$$\begin{array}{r} 85 \\ 155 \\ \hline 240 \\ 142.72 \\ \hline 382.72 \\ 13.3 \end{array}$$

143 1524
 85
 2374 to DM. COX car
 581 To 100' strip

Nail in old road 150' E of 90'
 1st A/B 27.74'

West line 100' strip E of ^{Smadberg} ~~Smadberg~~
 on E 100' of W 325' Tract B

Line to ⑤ 382.72

475.14 E line

79.12 ⑤ to R/L to ⑤ ground N 30

382.72

185.3

13.3

27.74

79.12

213.64

3rd from E line

475.14

123.3 nail in rd to 90' @ pt

1238

30 June, 1976 c/ mild

DM 63

SS.

WJSTK

Base

Survey for part of Tract ^B K, Gout

Lot 1 sec. 15 T. 140 N. R. 29 W. 5th. Printer, MN

NE ⑤ to chain dist. to house and
 chain both sides of E end of W

175

1460

10/20/80 survey for part of
 Tract B, Gout. Lot 1 sec 15-140N R 29W

West of Cox & part N of Cox property.

Norton "Dan" Hurd & 1 locate

several 1 Mi (Hear that RW.

Schneider surveyed for
 Smadberg & moved stakes)

WE find 2' sheet for W. 75, 150
 & 225 of said Tract. 1600^{100in.}

10/21/80 Dan & 1 chain ¹⁰¹⁸ 1047¹⁰¹⁸ Smad-

1M to R 669 Fixer NE corner W to S

90° 23' run 301.4' to Cox NW cor

N to E 81° 44' run 936' to Cox NE cor.

on above NE cor E to S 99° 57' run 307' to K

410' to H 20, 493' 15' / 00 set 1/2" pipe at 92° 17'

5336 Rd R/W. 1323' along Rd.

VFW 48 803 Dec. 76



Whittaker Metals



3145 COLUMBIA AVENUE, N.E.
MINNEAPOLIS, MINNESOTA 55418
TELEPHONE: (612) 781-3126

12/77	(Holmes)	Dave	Joe	me	Gary		
30 June, 76		5	5	5	0		
9 July, 76		0	8	8	8		
21 July, 76		8	8	8	0		
22 July, 76		4	4	4	0		
22 Sept, 76				4	4		
29 Sept, 76				6	6		
30 Sept, 76				4	4		
		17	25	39	22		
	@3-	51	75	(a) 234	66	426	310

948 201

4
150
86-898



Vertical text or stamp on the left margin, possibly a name or title, oriented vertically.



70.7
190.7
100.0

all Total 30 June '76 cl + warm DH
for Nell Holmes. 9 July '76 cl + warm JS WJSK 65

Survey for part of Gait Lot 3

Dec 12-190-25

¹³⁰⁰ 30 June '76: Dave Holmes, Joel Shield & I
to ^{Nell Holmes} Holmes. No indications for

Boat house marker.

We jiggle in on H Adams beach

like Turn 90° set nail 50'

N + L of 110' W on hi bank set

3 1/4" 30° on bank near shore of

Wanona Lake; set spike on wall E

of road. quit 1800

¹⁰⁰⁰

9 July 1876 Gery Howser, Joel Shield & I

to Mr Nell Holmes check deed & abstract

& copies from tag of Deeds office St.

set on 179 at E line between Blicke &

Holmes, 316' 1M for west Blicke NE cor

plunge at 34° & way off 1M on edge

pat hole. (Got 179 70' to 179) chain

for 264' dist & will be 20' ± in Wanona Lake

is fixed 1M on ridge between lakes pat hole

Go to M.C. on N-3 1/2 line check for 1M on

E shore of Ward's Bay. Find 1 1/2 22° 18'

laying on ground. May have found spot

it came from. quit 1745

Ties to 1M So Rd, NE cor 24.0
 Bleich. - 5.0
 21" Basswood 55.5° N. 17.0'
 20" " 3.66° W 23.5'
 29.4

31 31
 98 90
 21.15 16.27
 150.15 - New PT 171.27 - Old PT

8/5/76, set on 1M road 146.2 NE
 6 sight & plunge RT def fact
 127° 3' to 1M S' E of old one.
 Then RT?

I.P.
 72.84
 Pt on line
 76.70

72.84
 76.70
 4.86
 29.94

Δ - Lft 60° 00' 00"
 26.00 ~~Lft 60° 00' 00"~~
 Δ - Lft 60° 00' 00"
 26.00 ~~Lft 60° 00' 00"~~
 Δ - Lft 60° 00' 00" - Plunge
 # Probang line

29.40
 N.E. corner Lot - 3/4" I.P. 20" long

Nail on line
 8.95
 E. corner Lot

21 July '76 cft norm. D.A. 67
 22 " " " " " " " "

21 July '76 Dave Haim? Joet shield # 1
 do not find IM on 1M road west side
 Little Rocky Point. Find IM East shore
 Words Bay, laying down, maybe found
 hole it was from. Go to MC and N-S
 1/4 line, jiggle in between it & 1M
 300' N. (after clearing 12" maple
 tree blown over 1M) Test 63° 30' W
 turned from ^{approx} N-S to No good. Try
 63° 30' magnetic & find old castings
 1500 feet

22 July '76 same crew open line
 W shore Words Bay, set flag behind
 1M marker between Bleich & Medicine
 Jiggle in on N-S 1/4 line after (about
 Turn 63° 30' corrected, jiggle in
 between MC IM & 1M west shore
 Words Bay, continue W find
 old castings, iron pin E side of
 Boat Harbor. Reset 1M south
 edge of road to meet 146.2' per
 deed. Find 34° should be 24°
 to fit property owners usage &
 where shown lines when bought?
 235.55 1M. So Rd to 1M Lk. 1630.

Part of Gov. Lot 3 Sept. 22, 76
Holmes

371°W. 63.5'

North-South Line

PT. 1

70.70

$\frac{389}{120}$
199

PT. 2

128.7

PT. 3

389.00

$\frac{200}{101.3}$
199

PT. 4

153.4

PT. 5 = I.P.

300.3'

PT. 6 = M.C.

(Sept 29, 1976)

East-West Line

S.W. corner - I.P.

384.30

N.E. corner - I.P. - Holmes house

363.40

PT. on Hill

property

Note: Total measurement of
Lake Shore property of Holmes
equals 580.50' of which 335.50'
is good lake shore property.

North-South Line

M.C.

69

2.10'

I.P.

N.W. I.P. on N.S.

intersect.

53.9

Nail

389.00

Nail

1042.1'

1042.13

128.7

Nail

6.81'

70.7

6.95' at 50' S.W.

Nail 7.3'

1/4 I.P.

Sept 30, 1976
Holmes

PT on Top Hill

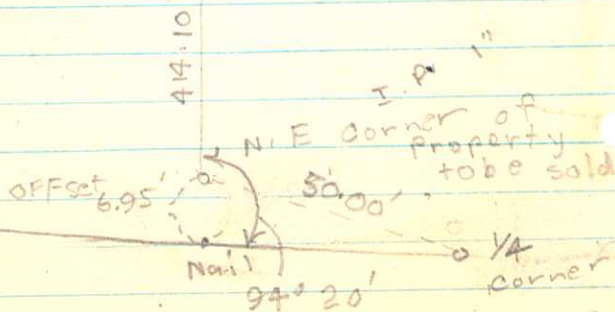
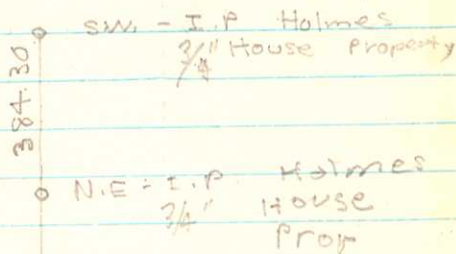
150.70'

N.E. Corner - I.P. - Property to be sold

Offset 6.95' from North-South Line

Deflect off North $94^{\circ} 20'$ on Random North-South Line Instrument on Nail set for offset

(East-West Line)



30 July, 1976. c/o Wm. Joel Shield
W.S.S. Jr. 71

check survey for 3a. line sec. 2 142-32

1300. 30. July '76 Joe & I to Benedict Lk met Duane Hackett (called from W. H. H. H.)

Locate 1Ms for 4 tracts set in

1960 on sec. line from 1Ms set

by Fodd in 1915 according to

Mr Wittsie in 1960. Old BT ^{OK} gone.

We ran line E to Lake &

found 1 1/2" solid 1M for MC, ^{old BT} gone

Found 7" cedar $345^{\circ} W$ 5.15'

6" cedar $387^{\circ} W$ 12' MC $\frac{2}{1}$

show lot 2 owners. above. quit 1500.

3-150-29 9-22-77

298 2 1M w. d. up to Lake ^{H.W.H.}

295

26

55.5

44.5

30.2

100.0

75

30.5

205.5 S.T. 1M S of Rd to Dixon + 50'

RT 5.2° 411 - 1462' RT $17^{\circ} 32'$ 411

137.3 in. lat.

(RT $17^{\circ} 30'$) Gary
Joel & I. 6/9/77)

150 17' 113°

North Line

Lot 13/14

102.75

Lot 12/13 - Iron in Brush

100.00

Lot 11/12

100.02

Lot 11/7

Lot 13/14

120.00

~~119.47~~

Lot 14/15 - Rock

130.00

Lot 15/16

340.93

Length of line between ~~Lot 15~~

* to turn on 12/13: $76^{\circ} 22' 30''$
 ~~$74^{\circ} 44' 30''$~~

Along lake shore

Lot 13/14 S.

105.50'

Note

All irons along

Lot 14/15 S.

Lake except lot

124.00

corner 13/14 have

Lot 15/16 S.

been moved

179.72
20 Aug 1976 GH at 16.55 75
Westerly 340.74
WSTK

Survey for Lots 12 & 13 Plat. of

Williams Stoney Lake shores

8/20/76 1000 - Gary Kautzer #1

Set instrument at Lot Corner

12/13 - I.P. in brush backsited

Lot corner 11/12, set nail

on line for Lot 11/12.

Plunged set nail on line

at proper distance of 102.05'

between Lot 13/14 and Lot 12/13

set instrument up over reset

nail. backsight Lot 12/13

turn Left $110^{\circ} 57'$ and continue

line south easterly down

to ~~the~~ Lake a distance 179.18'

and found corner I.P. at waters

edge.

⊗ @ Lot 11/12 over reset nail

Backsited Lot 11/12 Plunged

deflected RT. $76^{\circ} 22' 30''$ run

line 330.74' and set witness

I.P. 3/4" which 16.55' from original

I.P. in water. Total distance

from Lot corner 11/12 to original

I.P. = 347.29' Original I.P. S. 11/12

corner

Tim Loken 476-82-0526

House 28' x 52'

Eaves 32 x 52.

Johnson's

1320	359 60	86° 30'
1260	420	94° 00'
<u>27.6</u>	93° 17'	86° 13'
		266 43'

Tim Loken Walker, Jay T Job 7/18/77

7 May, 1977 C/E cont.

Tim Loken a
w/ J. S. R. R.

77

Not rd. 7/2/79.

Survey for part of Grant Lot 3 Sec. 24 T. 140 N

29 W. (Tract #1) Tony Johnson

7 May, 0930. Tim Loken & I to Johnsons check 1 MI
I had located 5 May, 100' front Tract 1.

Set on SW cor, sight NW cor. Rt. 94° 17'
run 136' set nail for SE cor. set on same

sight SW cor. 6" poplar blurs vision. Rt.

(internal 86° 30') run 150' set nail for

NE corner. 2nd to cut tree. Lunchtime

94° 17' apparently off 1° - to balance &

used 93° 17' checks ok. run 130' set nail

for SE cor. turn 85° 30' int'l run 100' set nail

set in nail turn 94° Hsc 10.6' so of NE cor

Transit on NW cor sight SW cor turn 86° 13'

62" to Hsc 13.9' so of NW cor. set nail at

52' @ 90° N 30' 90° E 52.4' @ 30' south

90° E 27.6' to NE cor property.

checked 1 MI in place south. From SW cor

Tract 1 Rt. 5° 07' 132.4' 1 MI. Rt. 49° 22' 100'

1 MI in place.

1000 18 July 77.

015 Hot.

W25 N 79

Tim Lake on

017100

Part of Govt. Lot 2 Sec 28 T139 N R29 W

1000 18 July 77 Time 1 to Lake Ada.

Check orig. Tract. OR.

Set on NW SE cor tract right 100'

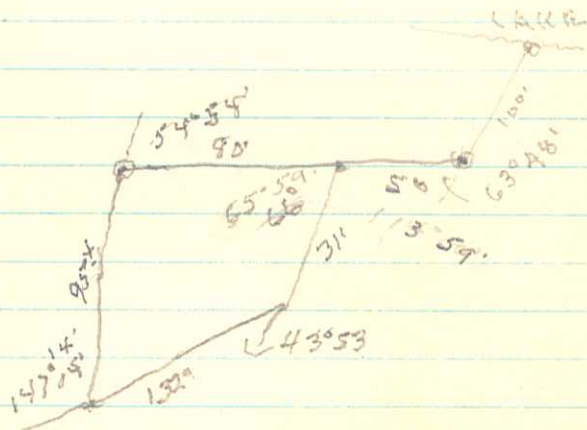
for NE cor. Plunge Rt. $63^{\circ}48'50''$

Lt $66^{\circ}00'31''$, Rt $43^{\circ}52'$, 132.0'

Rt. $147^{\circ}14'$, 95' to SW cor. orig. Tract.

Rt. $54^{\circ}54'$, 80' to nail SW from SE cor.

(Lt. $03^{\circ}00'$ to NW on Lake SW cor. strip)



check 0290 Tim.

3.5 hrs Munroe.

4

50.4' N to +.

101 1/2 + W to 1M

ward to 150°

" " 150°

99 1/2

399 1/2 54.5'

45°

99 1/2

1400 15 Aug 77. c/w worm. W.S.S. T81
Scott P Co

Survey & mark North line

Locate NW cor Grant Lot 5 - Sec 18

T. 140 N. R. 30 W. Cass Co., also 2 lines

E. check Chester Allen's N line at

90° from point on line above go

70' set nail set on nail 90° from Allen's

N line, hit 1M buried for point w

Munroe's N line. chain Bill Green

N. 12' from 1M in place, etc.

71° 3 1/2 hours, 2 PM.

20 Aug 77 c/w worm

W.S.S. T81

7 hrs

Scott P Co

Survey for part of Grant Lot 5

Sec. 12 T. 140 N. R. 29 W. Cass Co.

1400 20 Aug 77. Scott & I to Holmes

chain shore line from NW cor

Lot 3, southerly at 400' Birch clamp

at 402' large rock with old paint

marker on it, also pointed stake

down on ground. old cuttings.

Extend N line Lot 3 east to

intersect line N from Bleich. E line

& continue above line to N line

of Lot 3. set straddles & placed

3/4" x 3/8" pipe on 3' pole for corner.

chain N line got 399 1/2' to 1M on

E bank of Bay.

NE cor. of Tract in Tenn. swamp

unable to turn angle.

Will have to Triangulate or when

frozen.

1800.

SEPT. 14, 1977 PTLY CLDY 60°

π MUSTONEN

∞ B. SPAIN

3-12-140-29

π@ "A" (SEE SKETCH BELOW), SITE

I.P. IN BOG N'LY.

TURN LT 67°18' DBL \angle = 134°35'40"

MEAN \angle = 67°17'50" MAG = N67°W

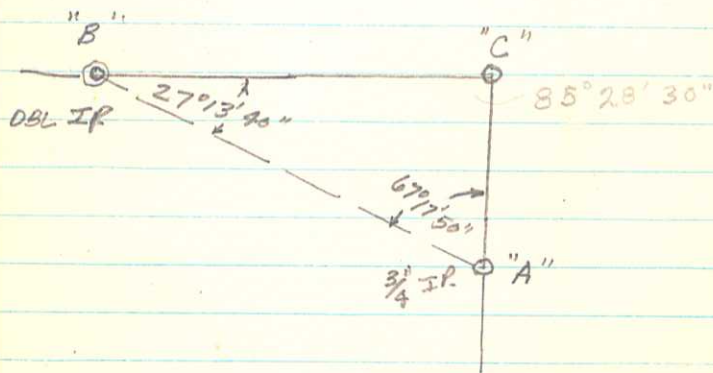
MEAS 109.40 TO "B".

π@ "B" SITE "A"

TURN LT 27°14' DBL \angle = 54°27'20"

MEAN \angle = 27°13'40" MAG = N85°E

MEAS 101.21 TO "C"



COMPUTE

	S	E	W
S 85°00'00" W 101.21	8.821		100.825
S 67°46'20" E 109.40	41.385	101.270	
	50.206	-445	

S 0°30'30" E 50.21

UNITED HEALTH SERVICES

P.O. BOX 7591

ST. PAUL, MINN. 55119



U.S. POSTAGE

PAID

BLK. RT.

PERMIT NO.

2857

150
75

325
100

WILLIAM JOSEPH SPAIN JR
HACKENSACK MN 56452

180

101
281

Place
Lake 2815

150.00
88

238.00
280.

953

IMPORTANT Read Carefully

999

475.14
 236.6

 238.54

236
 150

 386
 79.2

 465.2

COX 140.4
 W. L. M. 90

 230.4

N. W. Fykesen

1015 1/2

Gutter mout 77-825

Parrish, Albert G Lots 12 & 13

Schwaggerl, MERRY 145-500-19102

1 Ac in SW cor of NE/NE 19-140-30



memo

5/21/78

Steve Chivander
called. ok go ahead.

check ownership ^{Govt} Lot 5-12-140-31
Does Govt Lot 4 go to creek or
does it belong to Govt Lot 5?

→ Marvin D
Mr. Ostlund. 3116 Beard Ave N,
MRLS, MN 55000

Buchanan, R E
Joseph H. Exc.

E state of R E Buchanan

1111 150 station

Ames, Ia. 50010

Ties NE corner lot 22 ¹²
Pipes 1/4" x 22" JP 1687' 13.7' W.
N.P. 26° 65.4' S 10° W.
Pipes 1" x 36" 3rd cor lot 7 ²
N.P. 29° 30' W 7.95'
N.P. 29° N 13° E 24.8'

110'

3hr. 20 May 78 clemild. Jim Jader as 85
3hr. 19 June, 78' W.S.J.R.

Survey for part of Govt. Lot 1

sec. 15 T. 190N R. 29W 5th PM. (Wenona) ⁵⁰⁵

Get deed descriptions from Court house. check for 1M's.

20 May 78 Jim Jader & I to Wenona, find MC. on sec. line & cor 3th to lots 1-8 Block 1 Plat of Benj. Om. sed, now vacated. Bob Green shows us stakes set by Bob Schneider & possibly a surveyor from Bemidji. Also find 1M for SE. cor. Lot 1 Block 1, same Plat. Question as to Wenona East line.

19 June 78: Jim Jader & I check chainage on Fyksen & Cox, & Smadberg & line for E 288' of E 3/4 Lot 1 south of CAR #5. chain R/W. get 375.3'
Lake shore get 281'
check Fyksen E line get 475.14'

344
7 Aug. 78. cl & hot.
8 Aug 78 cl & hot
9 Aug 78 cl & warm.

7 Aug. 78 1400 Bill Casaner & I to
Hackensack, tied in rebar for $\frac{1}{16}$'s
cor on N-S $\frac{1}{4}$ ' line with nail that
Ed Caro used & tied in their
spike near switch with my
spk for approximate C'ly cor. ^{quit} 1730

8 August '78 1200 Bill & I to Hack
set back sight on S $\frac{1}{4}$ ' cor, set on
S $\frac{1}{4}$ ' cor & ran north. spike off
West shoulder old #13, 15" oak in
way. clear branches & clamp of
ash, & turn $0^{\circ}13'$ Lt to hit my spk.
Tie in my nail on N- $\frac{1}{16}$ ' line (betwe
cen track) with N $\frac{1}{4}$ ' cor & 1 M's
for N line O.P. Hackensack which
is N $\frac{1}{16}$ ' line, ($80^{\circ}34'$ N to E.) quit 1800

¹⁰³⁰
9 Aug. 78 Bill, Scott & I to Hack.
ran N from my spk for C'ly & alignment
with cutout in PP. @ W. ⁹⁰ 25.82'
N across bay @ E 25.82' then $53.13'$ Lt
to approx. N $\frac{1}{16}$ ' line. @ W. $53.13'$ for
approx. $\frac{1}{16}$ ' cor. From nail between Track
W on N. line O.P. 244.0' rough measure
True $\frac{1}{16}$ ' cor at intersection. quit 1800

\$2.00 repair show stand.

16 Aug. 78 5 hrs. Bill & I.

5V 16 Aug. 1978 cl & mild, Hot 91
4W 17 Aug. 1978 cl & warm.
4W 18 Aug. 1978 cl & warm. ethyldich.

16 Aug. 78 1200 Bill Carpenter & I to Hackensack, cut tall weeds & grass, also trim dead branches on plumb trees. Chain 49.0' ~~W~~ West from point 195.0' West of nail between tracks. Hit well point. Old deed Sept. 1935 calls for "1/4 N-S 1/4 line with N. line of lot B (well point)" etc.

check other deeds in O. of lot B but find no 1Ms for corner ^{tract,} ~~lot~~ 170.

17 Aug. 78 1400 Bill Carpenter & I to Hack check for 1Ms in outlot B to verify position of well point.

Fail to find any for tract next to Road & borders north line of OLB.

Found some to the east, 1800.

18 Aug. 78 ¹⁴⁰⁰ Bill & I to Hack. pick up Scott Pipenhagen & reconstruct Lot 4 Block 3. (lath in lake to make

111.23' on N. line OLB. & 196.5 on NW line, & set 4 1Ms (2 for West Murray Ave & 1 for NE cor Lot 4 & one for split of Lot 4. 1800.

174 78

87 14

set spike 12' so of SW cor

L

L 12' so Block cor
87° 13'

Oct. 78 Rick #1 check North line
Lot 14 chain 143.18 set on NE cor
77° 54' 20" chain west line alley
to SE cor. Lot 8 prorate 16 on 6 lots
set 1 Ms. for NE & SE cor of lots
14 (NE cor) & (SE cor Lot 13) 4 hrs

1978-20 July cl & cool. Sept P & 93.

1978-27 Sept.

WJ Br. R.

Survey for Lots 12 & 13 on

Hockanock R. NW Block 1.

1530 20th Sept 78 Scott #1 locate

SW cor. Block 1 & NW cor Block 2

O.P. & NW cor for lot 9, & set nail

for SW cor Lot 12, run 108' set

spike, found 1 M. 5' under ground

back so 58' & found 1 M. as above.

14th 27 Sept 78 Rick Sprigg #1 set nail

12' so of SW cor Block, open line

SE cor to nail set 300.20'

1530 29 Sept. 78. Rick #1 set on NW cor

Lot 13, right SW cor Block 1, turn

102° 05' 40" (to NW) chain 143.18'

set spike. Transit on same right

NW cor turn 77° 54' 20" (W to S)

chain hit spike for SE cor Lot 8. 11.

chain 88' spike, then 50' set spike for

approximate SE cor Lot 12. rain 1700³⁰

30 51 22 2) 68° 28'
 17 25° 41' 184° 14'
 47 252 43
 84 117

on line for N. 50' of Lot
 3 W of 1/4 line turn 91° 05"
 S. to W. + so. line 50' & N-3/4 line.

6/28/79 from 108° Lt 47.24'
 94° 48' 74° Rt. 48° 03'
 47° 24' run 217.52 Lt. 25° 41'
 51° 22' run 119.70 to Bleich's cor.
 Rt. 84° 14', 84° 14', run N to 1M
 so edge rd. 235.7' 1140 fms
 From 1M so edge Rd N. to N line Lot 3
 255.43' Total 491' 3"

650- 26 June, 1979. Partly cldy warm. W.S. 95
 27 June Dan Yochum
 28 June Scott Pigeon
 7 July, cldy & cool

Survey for part of Govt. Lot 3 Sec 12

140-20 West of N-3/4 line

1030 25 June, 1979. Dan Yochum, Scott
 Popenhagen & I to Storey Point

Locate some 1Ms. I show them
 what is wanted. They brush N-3
 1/4 line, Holmes west line thru
 & shore line of Wards Bay.

0930
 27 June, 79. Same crew jiggle
 in between M.C. on 1/4 line & 1M

North & continue N to 1/4 line

741.07 feet north of 1M near Birch

& shore line of Wards Bay.

Replace bent 1M on 1/4 line & 1/4
 line. Set on 1M 741.07' so of 1/4 sec
 Rt. (S to W) 84° 14'

From 1M near Big Birch, S to W

82° 12' run 63.1 feet to 1M on shore

Rt. 60° 35' run 74.35', Lt. 16° 50' run

108.0' 1700 quit for day.

7 July, 79. Scott Popenhagen & I to Holmes

chain line North (Bleich-Holmes)

to 1M edge Rd. from 1M on shore

235.7, then 255.43 to 1M in survey on

N line Lot 3. Total dist. 491' 3"

1 hr +

78

117

(1412 + w to Lk.)

763-2643

412-574-1374
612-560-8628 out 10/10/78

Bernard Jukowski Log

M.C. So. to nail 163.67, & 210.65
To IM. M.C. Lt. 48°00' 17'0
96°00', 143°59'58"
from 17'0 spk Lt 93°30'^{1st}
2nd / 87°00' spk at 216.6

48.9
163.67
from + 212.57 Table

93.3m 8/25/78
2/157 L 23.22' N of M.C. spk.
17.39 from above to
spk. 17° 48' 00" W of M.C.

From 216.6 spk Rt 3°45'
117.0' spk. & 8.3' back to 200

117.0 8/26/78. From IM (cut 117.0)
216.6 Lt 82°14', 2nd 184°24'
17.3 From 200' (93' N of 216.6) Lt 25

350.9 (SW to E) changed to 77°25'

8/28/78 Newmont T. from
200' Lt 77°25' at + N-S lines

19 Aug. 78. c/c Coal.

99

25 Aug. c/c Coal -
26 Aug. c/c Coal

Scott Pipenhagen &
Bill Capener road.
in Spain TX

Survey for 3[?] Tracts in SW4/NW4

Sec. 25 T. 137N R. 23W. Crow Wing Co
(Nelson Lake).

1000 19 Aug. 78. Scott Pipenhagen, Bill
Capener & I to Jenkins & Nelson Lake.
Brush line from M.C. south past
1.M. & jiggle in between. Set on M.C.
sight nail, plunge Lt. 48°00', 17.0'
nail on shore. Lt. 96°00' ^{93°30'} set spk
at 216.6' along shore L

Bernard & Cathy arrive & change
lines to make 200' shore east of
cabin. 1 Lot only & balance for
Frank McLean. Set pickets for
cabin lot for Chuck Erickson. 1830

25 Aug. 78 Bill Capener & I to Nelson
Lake. Ran E line 23.22' N to + Lake

Get 17.29' Sely to spk. 17.00' NWly from
M.C. From 216.6 Lt Rt 3°45', 117.0'

Property division 200' Lot & Cabin Lot.
Set spk 83.0' Nely from 216.6 Pt for 200

26 Aug 78. Bill & I start at our IM for
division Lt. 82°14' ran Sely to + East
line at 361.85' set straddles.

Bernard & Cathy arrive. ok so far.
at hrs.

SUBDIVISION OF SEC

4 T 141 R 31

~~1033~~
~~45~~

BY JOHN GREEN

1033

45

55.73

297.05

352.78

27.18

185

212.18

Recd.
1/81.7 1m. 66.2 1m.

103. 1m. 299.37 1m. (rd.)

37.5 1m. net of Reg. At 297.05

Mail. 55.33 to 1m. Lk. 17.15, C

83.10 Rt. 152.8 + 218.93 WE

191.41 1m. net 4.29. 254.75

M. fees 1m. 303.25 +

4 + 111.631

208912100 05 200

154. 8-29-78 cl & mild.

45.72	2	95	1766
199.72		190.08	135
		18	152.56

8/29/78
 W. Neis & I set 1/2 lake 200' pt
 +, N-S line & N line & 2nd
 L. side 38° 59' int 77° 58' and.

8/30 sec cor 95° 04', 190° 08' and

219.	250.00
152.66	33.15
371.66	303.15

9/20/78 Rick & I 1830 - 1730

SW cor to NW cor 85° 5-9'

" " to NS line 46° 02'

NS line to die, only 39.57

Rick Spring & I chain 1/2 line
 start 1/2 cor in swamp N 181.7' IM. to R/W
 co-Rd. 66.7 IM. N. R/W. 183.0 IM.,
 299.3 IM. (rd). 27.50 IM. Pt. of Bag
 Cabin tract. Lt. 39° 57', 352. (23) IM. Lk.
 117.0 L. 83.0 IM. Rt. 102° 29' 152.70 +
 1/2 line. continue 218.93' IM., Rt.
 84° 58', 191. (40) IM 1/2 line, 303. (2) + Δ
 212.10 IM. (MC), 23.22' nail on shore line

28 Aug. cl & mild

101

29 " " & cool.

30 " " " warm.

29 Aug. 78. Newman Neis & I to Nelson
 Lk. set on 200' pt 77° 25' SWly to SEly
 open line, set staddles 2 E line &
 continue 108' 1/2 part. set nail

chain division line. Get 361.85' 4hr
 Nov 29 Aug. 78. Newman & I continue

on Nely line. Find good spot to
 connect back corners & open line
 set 3pk's for 2 possible lines. 1730^{6hr}

30. Aug. 78 Newman Neis & I to Nelson Lk
 set Alameda bob over SW cor, & nail on
 hill Nely. & chain to SE cor 199.72'

Let SE cor W to N E at 218.97
 (219') + N-S line, & 152.66' to Lake
 From + to 303.15 IM. 6hr.

THE V. F. W. WISHES TO THANK our suppliers who gathered this Maple Syrup for us: Carl Boquist, Ray Cash, Lyle and Ed Silker, Millie Lacs Maple Products, Inc., Goplen Farm and Holberts Fort Millie Lacs of Onamia, Minnesota.
(History of Maple Syrup on other side)

Our Earnest Wish Is That You Will Enjoy This Treat

From Northern Minnesota's Woods.

00700 - St. Cloud — 22 March 1967 — 1200 - Minneapolis

TO ALL OUR BUDDIES IN ALL V. A. HOSPITALS IN MINNESOTA



Department of Minnesota

VETERANS OF FOREIGN WARS,

Pure Maple Syrup Treat



16TH ANNUAL

19.6
58
776

162 37
17 28
179 60

876
58
456

534
70
234

A word about Maple Syrup

Bill Spain, former Sixth District VFW Commander and a North Woods Pioneer, states: "With all our initiative and scientific 'Know How', we have been unable to basically improve on three things we got from the Indians; i. e., the canoe, the bow and arrow, and Maple Syrup."

The syrup is made from the sap of the hard maple trees, which are tapped in the early spring when it freezes nights and thaws days.

It takes about thirty gallons of sap to boil down to one gallon of syrup. This must be clarified or strained before packaging.

The best part or rather the most satisfying part, is when the syrup is served with pancakes, muffins, French toast or ice cream.

WE HOPE THAT YOU ENJOY IT.

Any comments would be appreciated by the V. F. W. Headquarters, Veteran Service Bldg., St. Paul (1) Minnesota.

572

57.75
200.25
338.00

Jensen. 8/68

Jensen

WE HOPE THAT YOU ENJOY IT.
Any comments would be appreciated by the V. F. W. Headquarters,
Veteran Service Bldg., St. Paul (1) Minnesota.

The best part or rather the most satisfying part, is when the syrup is served with pancakes, muffins, French toast or ice cream.
This must be clarified or strained before packaging.

It takes about thirty gallons of sap to boil down to one gallon of syrup. Tapped in the early spring when it freezes nights and thaws days.

The syrup is made from the sap of the hard maple trees, which are Pioneer, states: "With all our initiative and scientific 'Know How', we have been unable to basically improve on three things we got from the Indians: I. e., the canoe, the bow and arrow, and Maple Syrup."

A word about Maple Syrup



17TH ANNUAL

Pure Maple Syrup Treat

VETERANS OF FOREIGN WARS,
Department of Minnesota



TO ALL OUR BUDDIES IN ALL V. A. HOSPITALS IN MINNESOTA

0700 - St. Cloud — 20 March 1968 — 12:00 - Minneapolis

From Northern Minnesota's Woods.

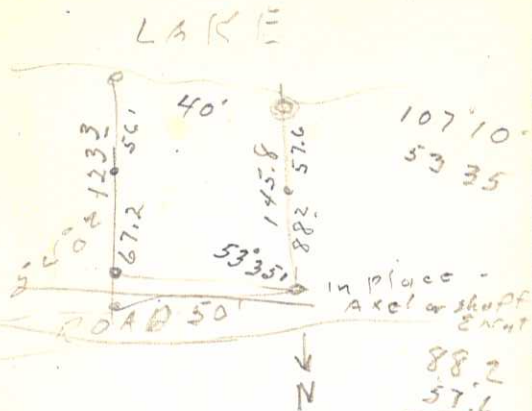
Our Earnest Wish Is That You Will Enjoy This Treat

THE V. F. W. WISHES TO THANK our suppliers who gathered this Maple Syrup for us: Carl Boquist, Ray Cash, Lyle and Ed Silker, Mille Lacs Maple Products, Inc., Gopten Farm of Onamia, and John McBurney, Pine River, Minnesota.
(History of Maple Syrup on other side)

Lensen July 1968

58 along road
 88² To in on hill -
 57⁶ To in on shing capped
 40' along Lake.

c/≠ mild - 7/22/68
 Jensen 1200-1730' JJ,
 WJS.



Beginning at the NW cor.
 of Govt. Lot 4 Sec. 25. T. 14 N.
 R. 3 W. 5th. Prin. Mer.

88.2
 57.6
 145.8
 56.1
 67.2
 123.3

9/14/78

From 356' coastline 100' in

115°20' run to bk 284' ±

From 350' to 200' to 2nd sp.

From 2nd 34' (set 3/4" x 16 10).

Rt. 32°08' ± 115' to 1 P. on shore 10 mi

set 4 IMs, Brown furnish 1.

521

9 Sept. 1978

11 "

14 "

15 "

AM. PC-mild

Hot

cool

cool

103

Rick Spring a
wees. R

Survey for parts of Gert. Lot 4 &

NE 1/4 SW 1/4 ad in section 25 T141 N. R. 31 W

1000 9 Sept. Rick Spring & I to job site,

check with Larry Short &

Mr Thomas Reicorner, then

to Guernsey Brown property

open north line of Brown tract,

find 1 1/4" IM. W edge Road to Scout

Camp & 3/4" IM southeasterly & 1 1/2"

IM. in 3w camp. Fail to find cutting

toward Ten Mile Lake. quit 1730.

1400

11 Sept. 78 Spencer Kubo, Albert A

Lochner & I locate IM. 250' south

of Brown's NW corner, open line

250' W. set on south IM. sight N IM.

1400

Rt. 115°20' brush line IM at 350'.

1400

14 Sept. 78 same crew.

continue 100' set IM. set on 450'

IM. Rt. 115°20' at 284.0' L. Rt. 32°08'

± 115' IM in place on shore. On 350' IM

Rt. 115°20' ± 200' IM in place. quit 1900

1500

15 Sept. 78 same crew. Open W line

Lake Nly. set cor on shore 75' from

Adams & 110' Wly from Brown's becor.

Get 21°50' L st W. on IM shore 95°32' Lt

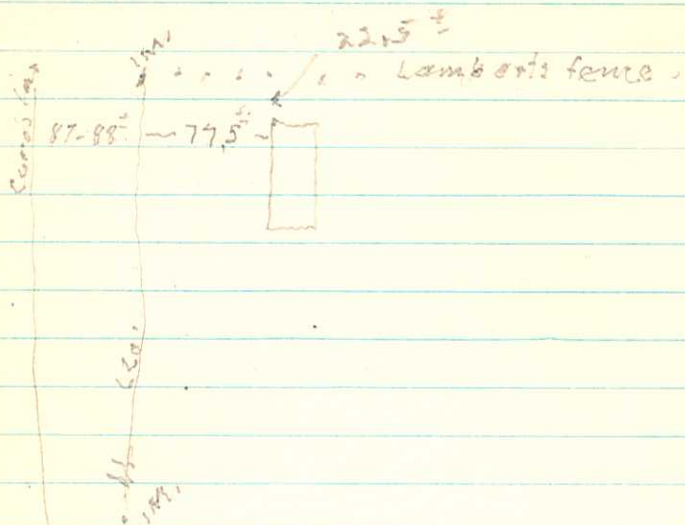
to IM 181°1' L. (deed calls 4-182.3.

quit 1700

20-V

L Lambert 9/3/79

145' to 180' to Carolan W
line



Sandy Sandstrom

1979

105

① Legal des. of Island

100' Access? Plat on M & B.

Palmer

191.79, 66.00, 191.79 31° 32'
87° 31' L SW cor

6/21/79 0900

319.0' 3/4" pipe cor 4 to 1M from
Shore Traverse. which is
18.0' E of 1 1/4" pipe cor M E on
1/4" line between Palms 2 Adit
Lt 90° 58' 1823, Lt. 45° 45'
91.20' 63.04, 133.8' Rt 48° 29'
run - 179.62' NE cor Lot 5
Lt. 75° 52', 151° 44' run
159.8' to cor Lot 6 NE cor

2-5-79 climetd
2-12-79 clim warm
6-14-79
1200

Dan Yochum & 107
W.D.S. Jr
Ken, Metcalf

Survey for Palms Norway Brook

- Adit. Part of SE 1/4 NW 1/4 S. 31 T 13 R 29 W
- 6/5/79. Left MSC 0830 - 0900.
- Locate NW cor Tract A of
- above description. Set on SW cor.
- Tract sight NW cor, chain
- dist, setting nails at 191.79'
- Lot 1 NW cor & road edge, 66'
- for road (E & W), 191.79' NW cor
- (1M) tract A & Lot 9 this plot.
- set on NW cor Lot 1 sight NW
- cor Lot 9, Rt. 86° 31' 00" set spikes
- at 111.16', 112.0' for Lot 2, 112.0' for Lot 3,
- 112.0' for Lot 4, 112.0' for NE cor Lot 4
- on W. line Lot 5. Set on each side.
- turn 86° 31' E to W, plunge run
- 191.79' set nails for lot corners.
- 12-June, 1979. Dan, Ken & I lay out
- lots 1-4, 6-9 as per. prelim. plat
- set nails & since 1M
- 6-14-79. Dan & I replace spikes with
- 3/4" pipe for lot corners

7-9-81

71.84

80.7

122.54

wedge survey

or 121.91?

26 May, 1979

Deed description for Schmieg to Fleisher

That part of Lot 10, ^{Block 3.} Plot of Lakeside Addn
to Hackensack, MN, described as follows:

Beginning at an iron monument for the
northerly corner common to said Lots 10 & 11
run southerly along the line between said
Lots to the southwest corner of said Lot 10, thence
run northeasterly ^{16 feet} along the south line of said
Lot 10 to an I.M., thence run northwesterly 154.63

± feet, to place of beginning
↑
more or less,

16 June, 1979 - cloudy - rain -

25 June, 1979 clear warm. Dan Jackson &
Mr. S. S. Jr. #

109

754

Survey for lots 8, 9, & 10, &

separate or portion of lot 10. ^{Lot 10} ¹⁰ ¹⁰

16 June, '79 0930 Dan & I to

Hackensack, Odie & Clarence

Schmieg show us what is
wanted, ~~at~~ N.E. cor lot 8 & some
stakes in alley. We find stakes

for lots 4 & 5 & chain 50.42 each
for, 6, 7, 8, & 9, L. left 14° 51' 54" ¹⁰
cor. 10/11. Not rain out. rain. 2 hrs.
Pd Dan. #48⁰⁰

^{10 30}

25 June, 1979, Ken Metcalf, Jake

Fleisher & I check existing I.M.'s, some
corners missing, some don't fit exactly
checked with Reg. of Deeds to verify
angles & distances with Plat on file.

set off 16' from SW cor lot 10 N.E. by
along alley & back to NW cor lot 10

Deed desc. Pd. Ken. #36⁰⁰ ch # 6981

83.00
27
56.73

83
16
67

174.39
38.66
153.05

48.06
29.32
157.68

Survey for part of Gov't Lot 7

Sec. 11, T14N, R. 31W.
Gust & Viola Aronsson
Pederson.

1 Aug 79 Scott Pipenhagen & I to job site
ran N by line of Aronsson property
set nails in line. Set 18" steel pipe
100' across dredged harbor N by from
Aronsson's NW by corner. 4 hrs.

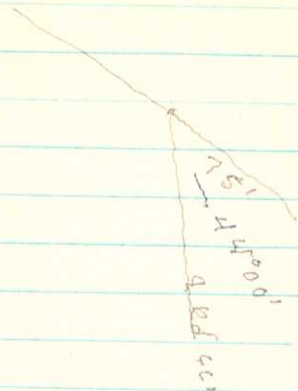
8/16/79 Doug Hoopman, Scott & I
to Shingabea set 3/4" x 1 1/2" pipe
on top of rd & continue north
153.05 ft 44° 00' in access rd +
to 20' Rd. cut to 375. LT 47° 08' & run
94° 16' 89.23 to 1M on shore. 3 hrs.

8/17/79 Dan Yachum, Scott & I
to job. From 114.39 to nail 38.66
= 89.69, to Access Rd (200' 100') Rt from
nail to north cut 47° 08' & Rt 10° 27' run
67.0' set island control. Access 3/4" x 1 1/2" pipe
89.69' etc. From 89' at end of 100' Acct 61.15
Rt 47° 08' for 1 sec. island.
111.77' on island Lt 38° 36' run 161.0
across island 186.30^w shore. Int. 89° 20'
Lt 105.70 1M Swedge Island to nail.
111.70 N by rd & 45' Lt 47° 08'

Lot 7 Sec. 11 - 141 - 31

$44^{\circ} 50'$

$87^{\circ} 59' \frac{1}{2}$



10/12/74 cldy sun wind

33.8' IM Locke W to ^{15' top}

was in old Rd. + 329 3₂ to 3₁
E of 120.

So line 91.35' to 1/2 1M line
90° nail of 1 1/4" 1/2 1/2

To So line from 450' on W 3/4 line 90° 08' to
Nail on So line in Road which is at 90°
from N line Lot 4. 1M on So line is
38.0' E of Nail & 27' E of 1/2

10/9/79 cldy cool. Dan Yachum & 1 115
W 1/2 Sec. 32
320'

Survey for the south 250' of the

North 700' of Govt. Lot 4, Sec. 32

T. 140 N R. 20 W Cass Co MN.

10/9/79. Dan Yachum & 1 to Job site,

find in west edge old road & by
tracing old cuttings west got

alignment to east & found 1M. on

shore of Wabedo Lake. Chained

South 300' & found 1Ms for N. 300',

& at 450 found 1Ms for 30150' & N. 450

⑤ on line for above & ran So at 90°

250' set 3/4" x 30' 1M at shore &

west edge of road to Archer's Resort.

PM. Bob Shaop over Need P & C.

1530 10/11/79. called Cass Co. Highway Dept.

Re: W line of Lot 4. To Walker for

Plans. Ken Metcalf & 1 to Job. Found

E. 1/2 cor. on E-W 1/4 line. No find 1M. on

1/4 line for 300' & 450' point.

Picketed & opened line for N 450' 1830

Lot 4 12?

Lot 8 27-140-29

12/8/74 N line 489.5 + 15' ± H20
A 59 "

Art Hastings Lot 4 - 27-140-30. 230'
t. E. Higgins J. O'Reilly " 100'
Zoltan Kerkes 288-180 500 51

450, 7 to nail 12/W? + 15' H20

247 W. 3rd Fand Rd. d97
Dexter, MN 55 803
~~55~~

A.W. Foss Jr.,
3308 Louisiana Ave. N.
Mpls,
MIN. 55 427

105.7
- 45.0

150.7

111.7
- 45.

156.7

7-11-1911-31, A d T p

✓ 161.0	161.0	171.70
186.3	155.9	45.8
<u>347.3</u>	<u>317.7</u>	<u>154.70</u>
317.7	186.7	161.00
<u>635.0</u>	<u>156.7</u>	
332.5	348.4	
	171.2	
	<u>317.70</u>	

347.3 2317.7
 173.6 2 158.9
 173.6 2854 =
 158.9 2854 = 25

30136.96 : 7854 = 23669.57
 25249.21 : 7854 = 19.830.73

$86.8^2 \times 3,10116 = 23669.57$

75346.29 : 2472
 171.2 : 7854 = 23019.63
 29209.44 : 7854 = 23019.63

23669.57 : 20.420
 23019.63 : 14.120

Jandy ✓
 300

A-Diaz x

30000000

5-26-80

07854

161

186

347

175.5

23642.31

7000

7.71.141.51

128 to mail whitt
109
135.4

372.4

1d 17/70 please

00690 13308 000 D MAR 81 1947
MR W. J. SPAIN JR.
NORTH STAR CAMP
HACKENSACK, MN 56452 Foss

109.
135.4

150.0

394.4

247 W. Strand Rd

Duluth - 55803

MOVING?

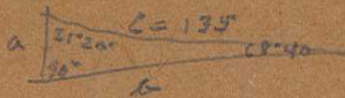
MN.

Post off with
address label and
this card to
the post office
at Duluth, MN

sketch of saline Lot 8
Dist from Lake to 1st
for NE Cor Lot 7.

558
1051
107 1011 111 60/





$$\begin{array}{r}
 21^{\circ} 20' \\
 90^{\circ} 00' \\
 \hline
 111^{\circ} 20'
 \end{array}
 \begin{array}{r}
 179 60 \\
 111 20 \\
 \hline
 68 40
 \end{array}$$

$$\begin{aligned}
 \cos \alpha &= \frac{b}{c} \\
 \cos 68^{\circ} 40' &= \frac{b}{135} \\
 b &= 368125.195
 \end{aligned}$$

8-29-140-29

Deep Lake

1-22-80

Wth ~~2399~~ 2399 mt by

33' 84 W 1/4 508'

2399 mt to mail 2399 to C

1683 Rt. 77" 15' run

1765 Lt 21030' run

2212

Run E, C105 81 11/18/80

Chopin ²⁷⁴⁸ Run 1708 Rt 11/18

run 31031 - Rt Lt 180240' Rt

run 2178

mess 1674 Lt 18040' run

2180 Rt 3020' run 1191

Lt 8'16' to + so line run 108' 1-2

Dan Yochum

16 June 1979 Paid for 8.00
17 Aug 1979 " 50.00
35.00 Due 12/17/79

Sandy
4-7-18

5 Sept 79 Pleasant Lk 2 hrs
10 Sept 79 " " 4 hrs.
9 Oct 79 Webedo. 5 hrs.
10 " " ? No notes.
11 " " ? To marker at base of Mt. Kearsy.
\$ Ken Metcalf. 3 hrs 35.00 to 12/18/79

18 Dec. 79 Pleasant Lk 4 hrs.
12 Dec. 79 Pleasant Lk 1 hr. 2
17 Jan 80 " " 4 "
22 Jan 80 " " 5 "
15.00

paid Dan 57.00 thru 4/23/80

Hastings 1400. Dean Y
9/17/79 New-Ridge
9/10/79 Dan Y
Kern Metcalf
mild 12/18/79. by 21

250

50 to W 1/4 line 89° 46' Fence &
Line 1/4

Part of Gov't Lot 4-27-140-30.

South 230' of N 92° W. W of AS-5 Yachum
9/10/79 Dan Yachum, Ken Metcalf
& I to Pleasant Lk. Open Picket line
from #45 W to Lake. No find 1M at
shore, wood 3ft on hi bank, but
doesnt fit description

12/18/79 1000 Dan Yachum & I to
Job site south line Don Overcash
property & south line of Gov't Lot
4. Check ok. chain north line
Get 489.5' to 1M. + 15'± to H2O.
South line 450.7' to nail W R/W
C.A.R. AS.; at Lake 1M. to H2O + 25'±.
2 1M. 3/4" NW & SE cor. 1300
Get P & C.

24 Apr 80 mild mild 12/18/79 Dan Yachum & I 117
" 1-7/17/80 N.S.S. 11
cold 1/22/80
mild 4/25/80

Survey for Road across

Gov't Lot 8 Sec, 29T. 140N. R. 29W
5th. P.M. MN.

1600 12-18-79. Dan & I locate N line of
Gov't 8 & markings for road location
& rough &. 1700 quit 468'

1400 17 Jan. 80 Dan Yachum, Newman
Nies & I to Job site, diggle in on
North line Lot 8 set nail on line,
S 33' 30" @ 90°, set nail for & road.
Set over nail turn 90° ran parallel
to North line east. set nail for L. 1700.

1330 23 Jan 80. Same crew set over
L turn Rt. 51° 40' run 168³' L, turn
Rt. 77° 15' run 176⁵' L. Lt. 21° 30' run
2212' = 566.0' P dist N. Bg. to L = 239⁶'
Pt. of Beg. M.C. on lake is 239⁶' west.
& 1st L is east of Pt of Beg. 239⁶'

1350 23 April, 1980. Dan Yachum, Burton & I
& I to Job site, start at nail 566⁰' pt. &
continue 5° 45' Lt. ^{258³' ± 21⁰'} run 2212', Rt. 13° 10'
run ^{200³'}, Rt. 27° 40' run 170⁹'.

¹³³⁰
29 April 80 Dan, Burt & I locate SW cor Lot 8 &
NW cor NE/SE & opened line between
ready to diggle in. quit 1730
(after Tander)

7-30-80.

Rt $11^{\circ}15'$

Lt $18^{\circ}40'$

7/30/80 PE & WOT W 1900
WJ-S. H 119
CBS
N4124

0355632



22	12
14	3
8	5
17	6
6	3
23	9
80	6
5	4

160,000
40,000

200,000 / 147.21

160000
30625
190625

b = 400'

115'
200' = 115'
400' x 2 = 800'

160000.0 x 40000.

447,2156
496,60330

200.0
175.0

162 400.0

a² + b² = c² ; c² = 400² + 162²

156
26 mi
31.30

120 mph

2nd Pic, S.C. Plattner.
 2 - Co camera
 1 - Top sup



11 July 80 WBS 13 M.C.
 17 " CBS 15 4 10
 15 " RBS 6 1 10
 23 " Bay 9 - 2 11
 24 " - - - 2 11
 25. court

190 - m - 19 hrs.
 30 - 0 + 8.
 15 -
 30. m

265 6 Prints 11 hr 2 more crew

271
 4
 275
 32 x 5
 307

427
 120
 307

1 Ms

15 July 80, 3 more crew 6 hr.
 17 " " 3 " " 4 hrs.
 30 hr = 3000 10 x

11 July 80 2 more crew 3 hrs.
 23 " " " " 4 "
 7 hr = 1400 7 "
 2 10 hr = 2000
 1 more 24 July 2 hrs.

4600
 3000 mileage
 20 X 1000
 5100
 120
 30
 2 = PVE
 632

495
 12.1
 61.6

P.O. Box 5999 - Sunny Hills, CA 92635



Using the preferred New American Standard Bible

7/23/80 Dan Yocham 4 hrs.

35, 36 & 37 EOT.

9/4/80.

N Nier
WSSA.

28.75' ~~18.75~~ on Base line 2k.

61' ~~61~~ on south end,

37' on back - Road

PC. Warm, 1300 - 1400

7/17/80 Byron, Burton & I to Job site. Chain from Reiters old set 1912 from originals. find 10' difference in To Knights. From Knights 1M

150' comes to 30. post in Lunders driveway & 60.5' to fence to lake

Fence 40 yrs & replaced 16 yrs ago.

Dan Yocham 9-23-80 1330. From SW Loff cor

90° E to cabin N edge wooden corner

16.2, 5.9 Sully to cor E edge 16.2

Sly 142° Ely 16.4'

Sw end of Board fence sly 60.3

+ 10 1/2 to H 20. On Base line 48° Sully to fence, at 90° (both from Sestle) 21'

E. Bedg 10' Sully. End of Bldg

Baseline continued hits 13' W End of Bldg

120' Pract.
302 Tric. mi, 1M
427. To pool.
120. to pool.
307. Bed.

375'

121

15 July 80 WBS as chrs.
R Spring g
W.S. 2'

Survey for Lots 35, 36 & 37

Block 5 End of The Trail

11 July 1980. Byron Spain & I look for stakes in Block 5, for control.

We find a 1 1/4" well pipe Ls at top to SW, dug down 3' not bent, could not use. Go to base line on lake side or front of lots.

Find corners for NE & SE of lots 18 & 19 Block 5. chrs in 100'

surely, find 1 1/4" pipe filled c

cement & cross in top ⊕, about 1 foot short. Schonsted does not work

3 hrs.

8/23/80. cldy - 2 hrs.

WSS.

78' on back to ditch, 95' Lvs same, N edge of tur approach, 45'

wide, 60' Long to bottom skldr

1 W Pine 29" 1 N P 28"

MINNEAPOLIS EQUIPMENT CO.

520 2nd St. S.E. — Mpls., MN 55414

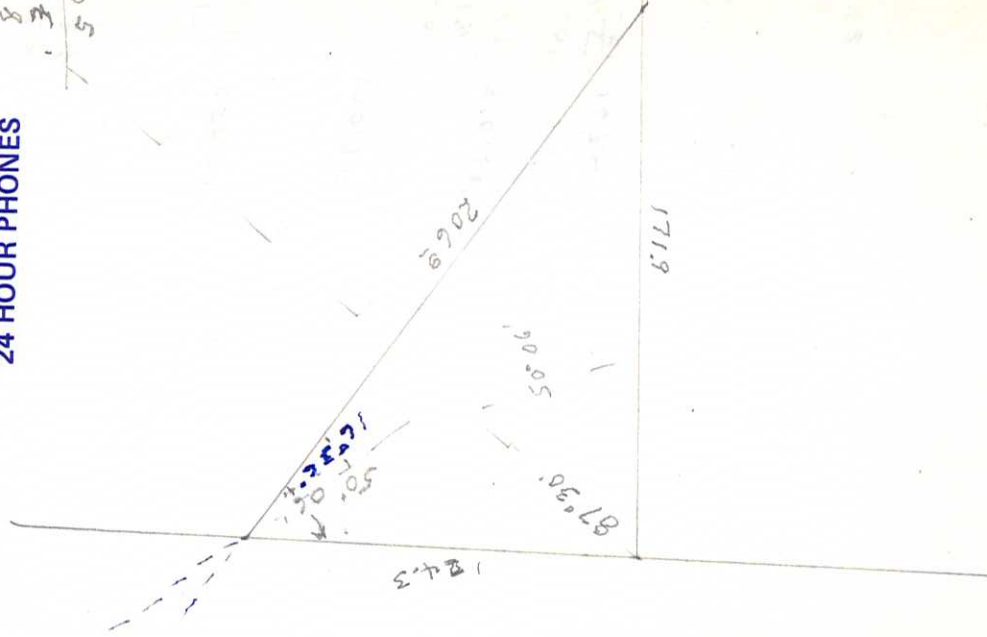
Construction Equipment & Supplies

(612) 378-0111 & 800-462-5343

24 HOUR PHONES

89 60
39 54

50.00



Ben How

218-224-2310 — La Porte

2-24-81

Deep Lake Road

$$\begin{array}{r} 179.60 \\ 126.20 \\ \hline 513.40 \end{array}$$

B

338'E.
169'

$$\begin{array}{r} 179.60 \\ 102.47 \\ \hline 77.13 \end{array}$$

C

176.40'

$$\begin{array}{r} 179.60 \\ 158.29 \\ \hline 210.91 \end{array}$$

D

$$\begin{array}{r} 179.60 \\ 174.17 \\ \hline 50.43 \end{array}$$

E

258.37'

$$\begin{array}{r} 179.60 \\ 166.50 \\ \hline 130.10 \end{array}$$

F

170.95'

$$\begin{array}{r} 179.60 \\ 152.13 \\ \hline 270.47 \end{array}$$

G

310.32'

$$\begin{array}{r} 179.60 \\ 168.45 \\ \hline 110.15 \end{array}$$

H

167.4

$$\begin{array}{r} 179.60 \\ 161.20 \\ \hline 18.40 \end{array}$$

I

217.8

$$\begin{array}{r} 179.60 \\ 176.43 \\ \hline 30.17 \end{array}$$

J

114.8

179.60

171.42

108.1'

87.18'

to 50 line Lot B

to 50 line Lot B

Compass

SE HIGH BEARER
BEHIND HUGHES

50000

109
 131.16
 240.12
 124.25
 364.44

179 60
 161 20
 18° 40"

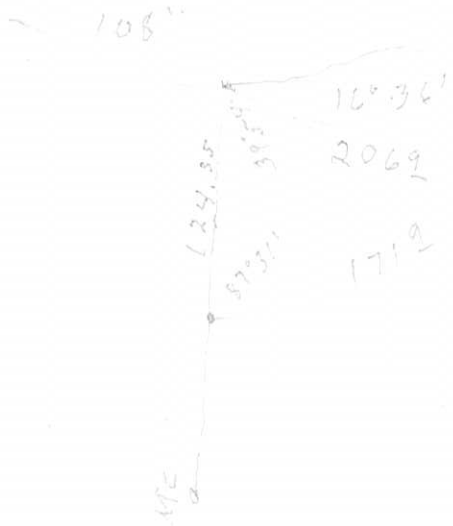
179 60
 151 08
 38 52

Call Betty

GREEN ✓



N



* 500 ft red

12/16/80

South H.C. 7 of 3-19-140-30

9/27/80 Newman Nieu 71E 3 hrs

10/1/80 D. Yachin 5 hrs

10/7/80

6 7 hr

10/9/80

0 6 4 hrs

5 16 4

21 hr

21 hrs @ 10 = 210, 420, 630, 840 = 230-

9/17/80

1000 9/17/80, D Yachum, N Nies

to Deep Lk. change RD &

Jiggle & set 1 M on 40' & 40' on

chain 135.4' E of 40 car

& 1.09 Sun nail on hill & 40' on

150' E nail to H20

Rt 3°20' 115° nail

Lt 8°16' 108° + App. 1/2 in Lot 8

1000 10/22/90 Dan V. Donk Hur & I

Get 41°00' SW to W + 50 line 8 & 40 IM

Continue SW 154.6' + N-S line 40

87°30' E to S IM 40 car south to t

& line at 97' change to 171.00

53°14' NE to N +

Nail on hill to MC 150' of adin

slope dist 21°20' E

2/24/81 0930 Dan Y Burt & I

From + 30 line lot 8 Lt 16°36'

run 206' + Line 30

From above + Rt 39°54', 124.35' to

40 IM. Set on 40 IM sight + pt 124.35'

E. turn 39°54' E to S.

230

S. Bramley.

123

43.0	50
37.4	37.4
5.6	87.4

9/27/80 W 426.7' Lot 3-19-140-30.

Scott Bramley (8/17/80 when com)

9/27/80 Newman Nies & I locate &

set pickets on MC. N side 2k & 30 sec cor.

Brush & fence above sec. cor. 3 hrs

1000 10/1/80 Dan Yachum & I finish above

Transit on sec. cor. turn 90° turn East.

line east, chain 252' to 30' up

road, after setting 2 spks

about 30' apart, set spk at

point to go 90° N. by chain stretch-

ed between 2 set by Transit sight.

π on center spk. Not in true line.

Rained out 1000.

10/7/80 Newman Nies & I repair

5th address Bents to use 14.63'

From use on point 94°00' N to E

chain 426.4' to west nail 1800 7'

10/8/8 Newman & I Trip 446.48

from 10. N. 124.00 & B3 426.7

Set on set nail on point 19.7

Get 237' 1 M so to H20. Get 426.7

87° E. between 1 M 3 + 6' E to H20 252.0

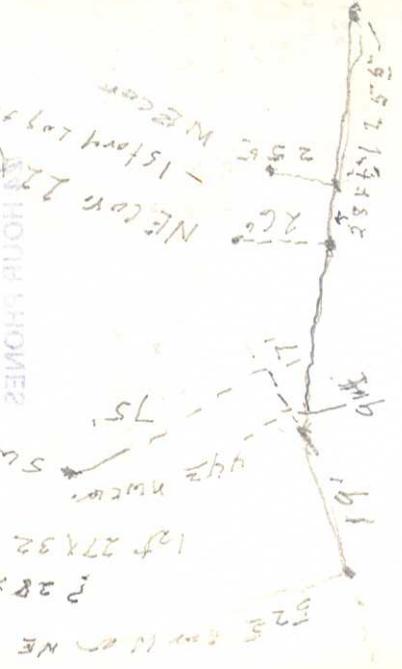
175' W pt is 80' wide at 250' W pt 174.7

Propy 130' wide at E. line.

IMMEDIATE EQUIPMENT CO

24 HOUR SERVICE
800 405 2438
180111 R 800 405 2438

NE COR 27X32
15 foot long
WECOR



LEAD IN

with ash
27X32

W 1200-139-29
Lake Arrow

A word about Maple Syrup

Bill Spain, former Sixth District VFW Commander and a North Woods Pioneer, states: "With all our initiative and scientific 'Know How', we have been unable to basically improve on three things we got from the Indians; i.e. the canoe, the bow and arrow, and Maple Syrup."

The syrup is made from the sap of the hard maple trees, which are tapped in the early spring when it freezes nights and thaws days.

It takes about thirty gallons of sap to boil down to one gallon of syrup. This must be clarified or strained before packaging.

The best part, or rather the most satisfying part, is when the syrup is served with pancakes, muffins, French toast or ice cream.

IT HOPE YOU THAT YOU ENJOY IT

Any comments would be appreciated by the V. F. W. Headquarters, Veterans Service Bldg., St. Paul, Minnesota 55101.



Pure Maple Syrup Treat
VETERANS OF FOREIGN WARS,
Department of Minnesota

20TH ANNUAL

TO ALL OUR BUDDIES IN ALL V.A. HOSPITALS IN MINNESOTA
12:00 - Minneapolis - 24 March 1971 — 12:00 St. Cloud - 26 March 1971

From Northern Minnesota's Woods.
Our Earnest Wish Is That You Will Enjoy This Treat

THE V.F.W. WISHES TO THANK our suppliers who gathered this Maple Syrup for us: Carl Bogquist, Mille Lacs Maple Products, Inc. of ~~Amanta~~ Mankato, Mn.; Louis and Joyce Richards, Wahkon, Mn., and Norman Anderson, Cumberland, Wisc.
(History of Maple Syrup on other side)

10-1700 BY RS.

Lake Ades 11/4/80

70.8 miles N.C. W. shore.

$89^{\circ}25'$ N to W.

$\frac{1}{2}$ cor in Rd to $\frac{1}{2}$ cor home

2 $\frac{1}{2}$ mi. S. of home

L 1005' RT going S. to E.

Sec cor to $\frac{1}{2}$ mi. S. E. cor. or road.

D.A. Dorn cost of survey? 7/8/62

790 Lake Ador Lt. 2.

$\frac{75}{870}$ Backus (Next to Kitzman's
(Govt lot 3 placed) Resort.

33-139-29.

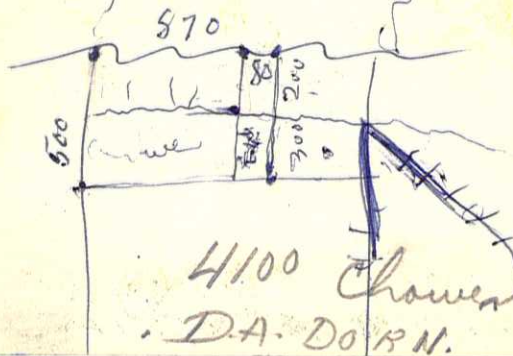
Behm's South Shore Acres. by Caro ¹⁹⁵⁷

corner at pt 790' E of the NW cor. lot 2 run S.
500' 11° E no line lot 2, then run E 80' to apt. then
S 66° N 11° E W line lot 2 a dist of 500' to the N.W. cor.
then W along shore 80' N 58° 60' E.

115-224

E. 80' of W. 870' of N. 500' of Sect. Lot 2

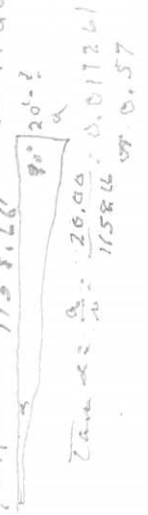
33-139-29



Bill Spain
Hickensack

4100 Chover ave S. mpls.
D.A. DOB N.

$3 \overline{) 24181} \leftarrow 1158.66$ is Adm.



$$0.0529613 - 33 \therefore X: 1158.66$$

$$33X = 6582927899$$

$$X = 199482360$$

MINNEAPOLIS EQUIPMENT CO.

520 2nd St. S.E. — Mpls., MN 55414

Construction Equipment & Supplies

(612) 378-0111 & 800-462-5343

ETJ M⁵⁰ 29
NSC. 12; 140-29

6-4-81 B.V. H. I

5420' W + Lot 13

Plots
6-8-81

420'00	1094.60
389.00	542.00
285.60	1636.60
542.00	
1636.60	to Nov 18

Rt. 85⁰ 45' runs wly
264.4' north to 541⁰ 25'
Lt. 97⁰ 08' run 9615' to
opp prop bee beds.
Lt. 88⁰ 08' run 115.9' to
Point 620.06' N. of M.C.
on sec 14S,

Ben How
218-224-2310 — La Porte

142.4
112.0

30.4

110.4
30.4

80.0

SE cor to 5-19-81
old nail 142.4 L
80.00

222.4' to old
112.0'
H/50 = 50', 110.4' W to N
South Lot + 112.0' shore
from 2.0' E) So. 40° 58' W to N
From 142.4 L R + 31° 45'
run 80' Lot cor. S L
Lot 1 46° 44' L.

¹⁰³⁰
6/16/81 Dan + J, 125⁶ share
for comm. lot.
840071 So to W. for $\frac{C_u}{Lx}$ Dan

Back country 1998
2000/2

I
I
I
I
I
I
I
I
I
I

21.1.98
22.1.98
23.1.98
24.1.98
25.1.98
26.1.98
27.1.98
28.1.98
29.1.98
30.1.98

IAVYRLOTF
W AUUVAF

0000*SUB
0000000000
LBNVITVBOJIAW

~~6-18-81~~

DOW

2833 2 } Corridor
 a } Larson

3276 c } DOW

↓
+34
m

32644 6-24-81

0930

8-27-81

Add 3,3' to section

4 ⑤ 5' shy from 1M.

From SW cor at Larson

LT 53° 57' run 1. to 2L
to 5' ⑤

From 5' ⑤ sight new cor

into L 40° 24' 11725. f. Lar
5' ⑤
§ 44° 32' to 3rd cor 1M.

6-10-81
Dan Y
WISR

30.3
20
110.3

6-10-81 Dan #1 to town. in T L 103° 20'
Larsen & Comm. to shore -
to road. From nail edge
in T L w to N 92° 35' to Lk car
Dows.

1330
6-24-81 Dan #1 to Dows, go over
properties. ok.
Set on 1.5' & Larsen's SW cor, stand
line 240' w to toward, nail @ 1.5 W
Set on nail. Rt. w to N. 54° 34' run
57⁸' to Larsen's SW cor.
From above nail sight Larsen's
SW cor plunge rt 90 28' 435' to
proposed back from Pierzon.
From Larsen's SW cor sight sight
South W nail for extension 5430'
plunge Lt 3° 00' run 129⁸' cur L & Comm.
From Larsen SW cor. Their SW line
60° 32' in T L 13430' to SW cor (50420)
Back Comm 1298.

127

1030 6/24/81 D.Y. #1 get 0.26' so
4/18 (Dows NE cor to see ^{Range} Range pole
0° 04' L of nail (in Birch & flagging)
29⁶ old NW 1/4, Dows N line
W. to nail (new cor) near Road
From above nail Lt 64° 34⁸' (w to s)
to point for Dows SW cor (79⁸' -
Note: Add 0.34' to Dows so. line.
57° 09' L Dows W line & S. line - Rt to E.
42° 40' Lt 52.0' L Dows W line to
Comm W line - Set on L sight Dows
SW cor Lt 5° 34' run 59⁷' to Comm SW cor
71° 12' set on Comm SW cor sight
Comm NW cor. & plunge to line Comm NW

26
46.84

72.7

130
27
107

20.00
- .92

19.08

6-11-81

52

Survey for road to NSC
Done Yashun & I Juggle
76^{1.70} in on a line from lot 1-14-148

69^{1.1} at 08 cur Lt $96^{\circ}45'$
run 94^{2.6} Rt $31^{\circ}32'$ run 78¹
119.47 Rt $25^{\circ}18'$ run 49⁵ Rt $10^{\circ}36'$

run 150⁸ Lt $39^{\circ}06'$ run to fork in
road 185⁷ Lt $24^{\circ}37'$ run 156⁶ to
approach & service rd (old 5)

50

W 55.8
W 85 a 129

Survey to relocate & set
1M at line Dos Mourac & to line
A. Sen,

On N line pipe across rd 447¹
83.6' 3/4 x 2 1/2" pipe.

Rainy Morkoff 9-23-81
at 2:30 on dock & end lake
L. East cur Lt to oc line
Rt 58⁰⁷

STATEMENT

WALKER, MINN., November 17 196

M Roy S. Johnson

Pine River
~~Heckensack~~ Minnesota

IN ACCOUNT WITH

BEULAH HENDRICKS REGISTER OF DEEDS

CASS COUNTY

Filing Plat -Pine Shores \$8.50

*Rebooked 1917 - 850
I Paid Deed - 1966
Roy S. Johnson*

cid/cool 9/21/68

10:45 AM. Mr. Mike to Wedding. MMS.

Locate 1M5

Toile & Barton. after reading this.

PM. We check deeds & set on 1M

60' W of Peter's NW cor ⑤ 192' W of

New cor. ran 5 (L 86°42' N 4. E)

on ⑤ line - checked Mike's 1M at

15 rods out. set hubs at 41 rods,

43 rods. set on 41 rod hub,

turned 86°42' N to E at 19' set

hub, also 2 further east.

Came back 15 rods, 292.5' at

set hub, set over hub turned

86°42' N to E at 19' set hub,

2 further east. supper @

Pete, Nozlet, David & wife.

9/23/68 c/1 coal / Blk. ME to PR

Start on job 1900 - 1900. Ran

East line. Located 1M, E & 1/2 of

1M 33' so from ⑤ 84 one 33'

N to one 336' N. opened line

to NE cor. set hubs at

approximate cor. set 36 x 1 1/2

at Barton NE cor & well points

to square nut cap. quit 1900.

at ⑤ Pete & Hazel.

9/25/68 c/1 coal / Blk. ME to ME

to Walker check records & 4

Joeyger-Mitcher top & 4 PR.

ran N & 50' line for Howard -

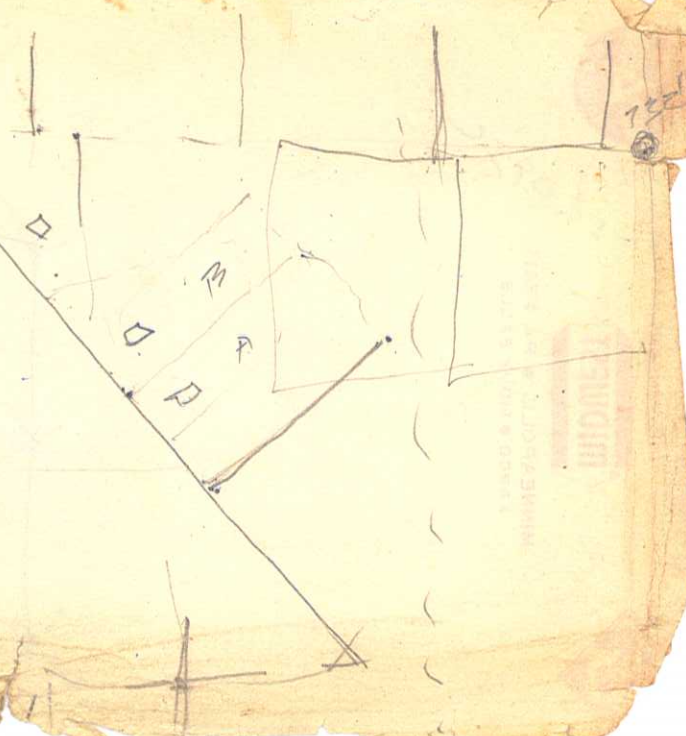
to Barton. set 1 1/2' on

E line. 2 hrs. +

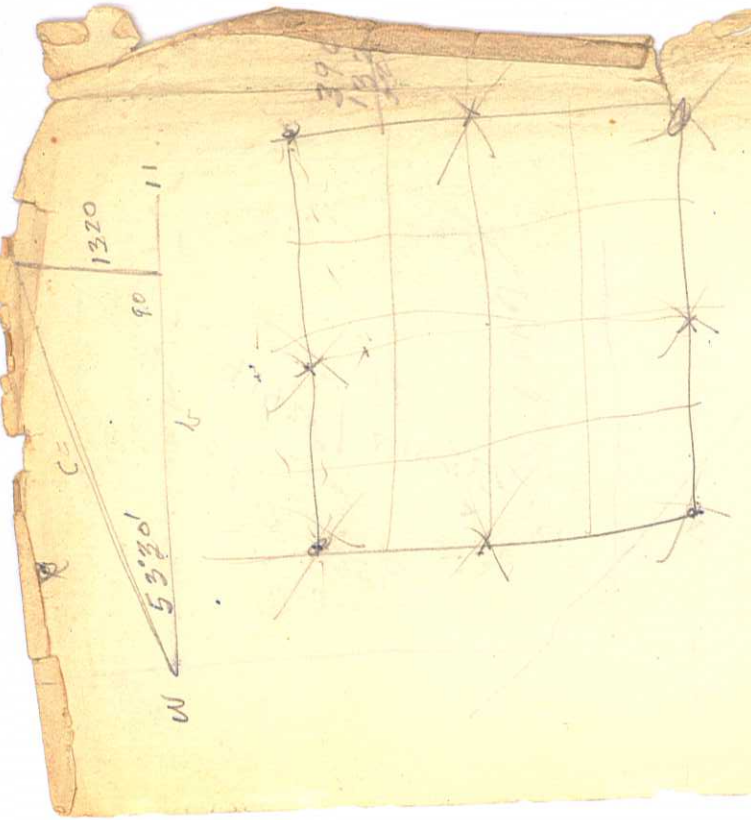
1 2

U 1620
A 1424
A 1432
1897-22

B
T
R
C



WINDMILL
MINNEAPOLIS, MINN.



MIDWEST

INDIANAPOLIS



MINNEAPOLIS • PA 4-5411
FARGO • SIOUX FALLS



1220
1220

Don Jensen 3/31/64.

All that part of ~~the~~ Northeast Quarter of Southwest Quarter ($NE\frac{1}{4}$ of $SW\frac{1}{4}$)
Section 15, 140, 29, between Boy River and C.A.R. #39 as presently constructed
lying north of a line starting 230 feet southwesterly from southwest
corner of bridge and running north $58^{\circ} 30'$ (magnetic) 300 feet, more or
less, to Squaw Lake, and there terminating. This incloses a tract of
2 acres, more or less.



MEMORANDUM

TO

DATE

FROM

POLICY NO.

SUBJECT

CLAIM NO.

Message

Signed

4/19/64

Reply

Sign

West 510³¹, cont 508⁴⁴
Rt. 94°15' 100.28' hub
200⁵⁶' hub. at each
hub Lt 94°15' & Rt
208⁵⁶ Lt 94°15' full
292⁵ Lt 8' & Rt

R.S. Barck^v 9/9/63

Out lot B. Back.

Try this week

or early next week.

Does not come with

company.

1336.9
1342.1
1679.0
1339.5

10/1/26
10/1/26

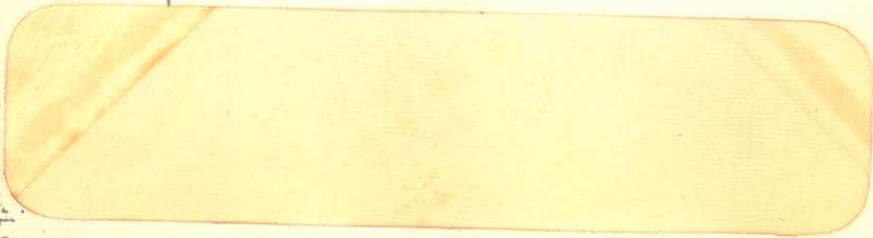
JOHN A. KNUTSON & CO.
CERTIFIED PUBLIC ACCOUNTANTS
404 FOSHAY TOWER
MINNEAPOLIS, MINNESOTA 55402

89 60
1 11
88 49
1 02 30
89 70 30
90 10 30

89 60
1 04 21

88 0 18
1 21 30

89 39 30
89 59 60
88 38 30
26



West line N 1° 11' E
5 1/2 in. 588' 38 1/2" E 90' 0" N
N 76° E

5 1/2 in.

12/14/66



$$\sin a = \frac{a}{c} = \frac{12}{1336.9} = .008976$$

$$a = \arcsin .008976 = 0^\circ 31' 10'' = 0^\circ 30' 48''$$

$$B = 89^\circ 29' 12''$$

1336.9

~~1336.9~~ X ; ; 1

1336.9

~~1336.9~~ = 12

.008976

X = ~~0090477~~ Per sq.

N 76° E 90° 41' 18" our line
for 5 1/2 in. going E.

9/15/63

Schmidt's Plot of

NAM-KEN.

Beauty Bay

630-

Albert Pedersen

Ch. Trip Board.

260r.27

Aug
Shafter

Paul de
A. M. W. M. W. M.
Lake.

$\frac{10}{\text{out B.}}$
 $\frac{11}{11}$
 $\frac{12}{12}$

$\frac{1296}{1555}$
 25' To Swamp

22' To edge of Swamp SO.
 15' To edge of Swamp N. from
 NE cor. Lot 11

Across Swamp $\frac{1514}{50}$

$\frac{22}{22}$
 $\frac{22}{22}$
 $\frac{22}{22}$
 $\frac{22}{22}$

$\frac{1}{2}$ 185 1/2
 $\frac{2}{3}$ 161
 $\frac{3}{4}$ 219 1/2
 $\frac{4}{5}$ 252 3/4
 $\frac{5}{6}$ 239 2/3
 $\frac{6}{7}$ 211 2/3
 $\frac{7}{8}$ 162 2/3
 $\frac{8}{9}$ 175 2/3
 $\frac{9}{10}$ 230 2/3

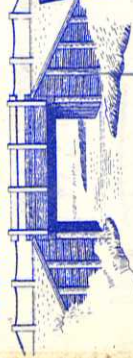
$\frac{185}{541}$
 $\frac{230}{8}$

$\frac{2395}{283}$
 $\frac{280}{2395}$



WHEELER LUMBER BRIDGE & SUPPLY CO.

3340 REPUBLIC AVENUE - WEST 9-7854 - ST. LOUIS PARK, MINN.



Pressure Cured LAMINEX CULVERTS - PILE BRIDGES -



Low Cost — Quick Simple Installation — Proven Permanency

Yard	5.00	50.00	30.00	50.00	20.00	20.00
Yard	5.00	50.00	5.00	50.00	5.00	20.00
Yard	85.00	45.00	25.00	45.00	45.00	20.00

Place for 2/2, 1960
1/2
2/3
3255

1-17 thru 21
2 24-21
1-17 - B 21
1-23 - B 26

179	59	66
89	19	49
90	40	67

GEO. J. ALLEN — WALKER MINN. — PHONE: 3051-W

Sherman A. Yochum Post 772 VFW.,
Roland Edwards QM.,
Longville, Minn.



William J. Spain Jr.,
Hackensack, Minn.

Handwritten notes and calculations in the bottom right corner of the envelope, including a vertical list of numbers: 20, 21, 26, 27, 28, 29, 30, 31, 32, 33, 34, 35, 36, 37, 38, 39, 40, 41, 42, 43, 44, 45, 46, 47, 48, 49, 50, 51, 52, 53, 54, 55, 56, 57, 58, 59, 60, 61, 62, 63, 64, 65, 66, 67, 68, 69, 70, 71, 72, 73, 74, 75, 76, 77, 78, 79, 80, 81, 82, 83, 84, 85, 86, 87, 88, 89, 90, 91, 92, 93, 94, 95, 96, 97, 98, 99, 100.

1935
7930
9808
9927
8033
17960

1183
285
1154.75

Any comments would be appreciated by the V. F. W. Headquarters,
Veteran Service Bldg., St. Paul (1) Minnesota.

WE HOPE THAT YOU ENJOY IT.

The best part or rather the most satisfying part, is when the syrup
is served with pancakes, muffins, French toast, or ice cream.

This must be clarified or strained before boiling.

It takes about thirty gallons of sap to boil down to one gallon of syrup.

The syrup is made from the sap of the hard maple trees, which are
tapped in the early spring when it freezes nights and thaws days.

Pioneer, states: "With all our initiative and scientific 'Know How', we
have been unable to basically improve on three things we got from the
Indians; i. e., the canoe, the bow and arrow, and Maple Syrup."

A word about Maple Syrup

11.5 Robbins 300
1578
1112
466

1154.75
923.75
1578.47
066



14th ANNUAL

Pure Maple Syrup Treat

VETERANS OF FOREIGN WARS,

Department of Minnesota



17960
9921
8039

TO ALL OUR BUDDIES IN ALL V. A. HOSPITALS IN MINNESOTA

0700 - St. Cloud — 24 March, 1965 — 1200 - Minneapolis

From Northern Minnesota's Woods.

Our Earnest Wish Is That You Will Enjoy This Treat

THE V. F. W. WISHES TO THANK our suppliers who gathered this Maple Syrup
for us: Carl Boquist, Ray Cash, Lyle and Ed Silker, and Mille Lacs Maple Products,
Inc., Goplen Farm, of Onamia, Minnesota.

(History of Maple Syrup on other side)

$$\begin{array}{r} 275 \\ 40 \\ \hline 150 \\ 750 \\ \hline 1375 \\ 625 \\ \hline 9625 \\ 3750 \\ \hline 13375 \end{array}$$

$$\begin{array}{r} 275 \\ 48 \\ \hline 2085 \\ 21286 \\ \hline 11600 \\ 27700 \\ 11000 \\ 18800 \\ 17900 \\ \hline 17750 \end{array}$$

$$\begin{array}{r} 49 \\ 65 \\ \hline 1745 \end{array}$$

$$\begin{array}{r} 275 \\ 150 \\ \hline 425 \\ 2125 \\ \hline 12125 \\ 4875 \\ \hline 25456 \end{array}$$

$$\begin{array}{r} 150 \\ 750 \\ \hline 425 \\ 2125 \\ \hline 5625 \\ 4875 \\ \hline 14875 \end{array}$$

$$\begin{array}{r} 126780 \\ 6068 \\ \hline 889460 \\ 35 \\ \hline 92246 \end{array}$$

$$\begin{array}{r} 150 \\ 750 \\ \hline 425 \\ 2125 \\ \hline 5625 \\ 4875 \\ \hline 14875 \end{array}$$

$$\begin{array}{r} 2545.6 \\ .35 \end{array}$$

$$\begin{array}{r} 890. \\ 133 \\ \hline 757 \\ 490 \\ \hline 267 \end{array}$$

$$\begin{array}{r} 890.96 \\ 148.75 \\ \hline 742.21 \\ 525 \\ \hline 2119 \end{array}$$

$$\begin{array}{r} 127288 \\ 76368 \\ \hline 890960 \\ 35 \\ \hline 92526 \end{array}$$

ON D. LUNDRIGAN
ATTORNEY - AT - LAW
PINE RIVER, MINNESOTA

69
5208 1/4 E to MC.
5549 to old shore line
2605 + + & Road
2606 split fences
2th in buy 1303

276 between 1M's.
North line,

3678 W @ 936 N.
3782 " @ 1785 " "
4653 " @ 172 S. 41M.

188.8. 488' 1/2

otto Haack.

Goit Lots 1 & 2. 34-140-28



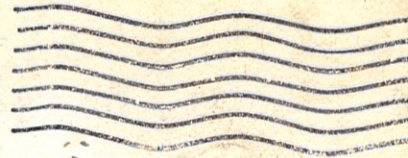
Burdette's Awd.

2th sandy
125' RT
RT 97050'
7900 175' MM.
611, 500' SW

Mr. William Spain
Registered Surveyor
Hackensack, Minnesota

RT 57241
208' 8" Def. Buy.

40 Act



260.65
163.63
96.02

3 + 56.85
1 + 50
590.65
2 + 20
7731.80
2 + 545
946.25

45.05
377.7
423
7 + 31.65
142.9
8 + 59.75
27.34
10.194

35.6
118.2
145.2
112.5

126.65
6.77
126.65
1.05
125.61
6.77
132.38
122.28
102.00
284.20

113.20
1340
126.65
127.69
6.77
134.46
4.64
29.82

284.20
77

964
37
91

45.6
29.8
34.0

9

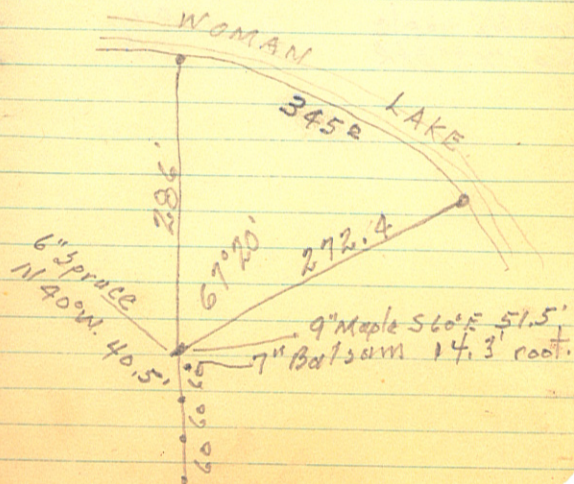
6

25 Oct. 1968. cl & mild.

HAR.
WJ.Sr.
133

Survey for West line Gov't Lot
1 sec. 14-140-29, NE Gov't Lot
2. 10/25/68 Harold & I open
picket line, jiggle in between
NE cor. Gov't. Lot 2 and 1M.
on shore for NE cor. Lot 16
Block 9 End of the Trail. Set
hubs in line, chain south
from NE cor Lot 16, 286.0'
1M. for Leary-Gleason cor.
From NE cor. Lot 16 chain 345.2
along shore to 1M. Leary-G.
cor. with Spain. Then wly
272.4' to 1M on E line Lot 16.
(Deed calls for 250.')

We start at 286' 1M on E line
Lot 16 & run south setting
wood stakes at 60', 120', 180' & 240'



3 5/8
70
16 Oct '61 Clear wood

Mc Caskey Elev.

B.M.	+	-	H.I.	Elev.
	13.25		113.25	100
Grade BH 30	109.25			104.0
T.P.	13.40	0.00	126.65	113.25
T.P.	6.77	1.04	132.38	127.69
Match 4"			134.46	
W.D. - E.Cot.		4.64		129.82
stk back Washhse.		0.1		134.72

Sta.	#	H.I.	FS	Elev.
B.M.	13.25	113.25		100.00
T.P. 1	13.40	126.65	0.00	113.25
T.P. 2	6.77	132.38	1.04	125.61
mark 5" Birch			0.1	132.28
mark 4" "			0.1	132.28
mark 2 1/2" maple			0.1	132.28
Top 1" x 2" stk			0.1	132.28

135

Water level Woman L.

Grade for Washhouse floor.
Top 1" x 2" stk in Path.
Top 4th Brick 30 Ead. ret. flower wall

Water level, Woman Lake.
Top 1" x 2" stk in Path.
Top 4th Brick ret. wall flower.

stk south of Washhouse.

13 April 57 Clear 8 coal. 100

1250
62
438

137

Side wall alignment
& grade for church.

8' Walk in front of school.
made our own form.

1652
105
1547

$$155:2366 :: X:1$$

$$2366X = 155$$

$$X = .0612$$

13443
10210

23660

.0612

155.0000

14196

3040

2366

6740

2366
9464

2366
14196

1344

.0612

2688

1344

8064

522528

118.

82.25

35.75

13475

13475

300

2366

.0612

6732

2366

14196

144.9992

82.25

35.75

118.00

2635

131.75

.0612

1836

Mrs Sig Anderson
4725 - 30th Ave So.

Minneapolis 6 Minn.

Tel. Pa 4-5669.

558
425
— 33
— 1

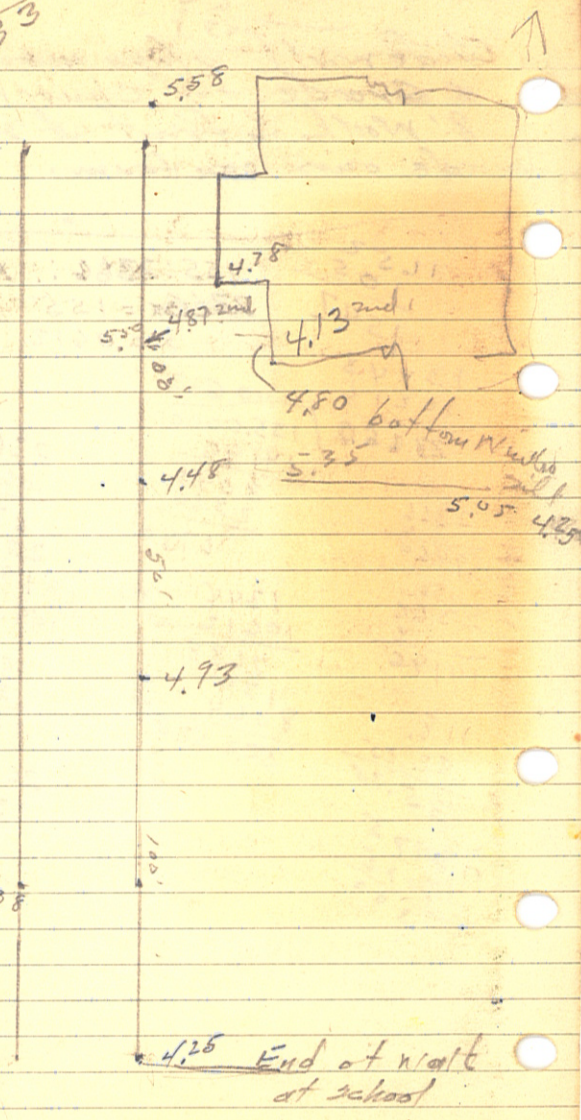
558
478
— 20

480

487
413
— 64

487
360
— 117

438



Survey Jobs ahead 1961

Ed. Anderson ^{255'} Lot 2, Little Boy
 11/24/60 Herb Stand Lot 3, 200' 9-14-27
 10/24/60 Philip Hayes, Lot 6 Hubb.
 E. Blom, Lot 5 "

Jobs for 61-62.

Poppewell
Hend Crewse *underway* ✓
Earl Johnson ✓
Witte
Paul Sandler
Paul Christain *underway*
Feldbragge - Art Peterson ✓
Vincent 2 jobs ✓
V.H. Kriebs ✓
Leroy - Mortenson *out*
Nordquist ✓

For Rottier ✓

143

5.50
4.50
Car to $\frac{8/9}{17/16}$ 140-29
44 Turn N 42° E 1695'
9" " S 28° E 1840'
2x48" G.I. Pipe

Ties topper $\frac{1}{9}$ 140-29
North on P.P. S 45° E 322'
" " " " " " N 45° E 442'
" 8" Branch N 40 W 252'

Survey jobs ahead

Anders Anderson - P.R. ✓
Laugeson ✓
Mrs. Georgia Miller ✓
Earl Johnson ✓ Partly ✓
R.W. Anderson ✓ Partly ✓
Chris Rottier Partly ✓
J. Lee & Lee Frederick ✓
Peter King ✓ *in here*
Floyd Treater ✓ *9/20/62*
Judge Ben Oliver
John Milligan *out.*
Cal. J.H. Haugen *Get sketch do job done*
Robt. Hannon *225 300* ✓ *with* ✓ *just*
E. Jorgenson 19-141-31 ✓
James Lee Jensen *underway* ✓ Lot 6-11-141-31 Plot.
Paul Christain & Ken Schaffer *underway*
Mackisson *out* ✓ Gardner *use* ✓ *Partly*
Mrs Sig Anderson - Little Bay X
Laugeson ✓
Mrs Fred Bentz *Aug '61* ✓ *Kabekand - Bay Central*
Art. Peterson ✓

Burdette Anderson ✓
Gaut lot 7 sec 11 ✓
14/1/59 ✓
Felt / checked Stambrak ✓
4/3/59. ✓ 1/2 day.
Jobs Ahead. 1959 ✓
7/2 Moses Little Boy, Campbell ✓
7/2 Robt. Fanta ✓
15/4/59 Star Peterson No. of Burdette Sec 2. 141. ✓
14/4/59 Otto Hack partly ✓
Kirtland & Tice ✓
Don Lambke? ✓
Eli Oliver under way ✓ cont. Fin ✓
Funk. Lot 7. Peaceful share ✓
Hake Lot 11 ✓
Mrs. McGearry (Horse shoe) lots 5-16. 19-30 ✓
? Miller lot 33 sec 1. 142-30. ✓
Feldbrugge. lots 66, 67, 68. Interlachen ✓
Joe Moran T14NR 31st Almond, Davis ✓
Wood shot. Bass Lake. ✓
MR THOMAS Walker Realty ✓
lot 6 Sec 12 142-31 ✓
sec 11 Burdette Anderson 1/2 ✓
Ida Aufmson Outlot A Hack ✓
Wm Green, 10 mile ✓
Williams 22. 140-26 ✓
Miller? X ✓
Almond lot 99 m. Lake, Erick Peterson ✓
? Anderson Aug. ✓
R Moses under way ✓
Nordquist? ✓
Johnson Wm. ✓
Aas Carlson. ✓ sec 14. 3rd ✓

Survey Jobs Ahead
10/15/58.
Shraw - Whitefish ✓
Burdette Anderson ✓
Linger - Horsehoe ✓
Sattelberg - Walker ✓
Horb Herold - Burdette ✓
{ E. Pagan Nord 600 ✓
Gaut lot 2 - sec 33. 143-31 }
Dave Arthur & Woodruff ✓ comp.
Hutchinson X X
George Corder ✓ comp ✓
Bruce P Wickett * ✓ camp ✓
John Skogmo Ft. Dodge ✓
* Luverne land. Gaut lot 1. 101 ✓
Clark Calkin under way ✓ comp.
Campbell ✓
do Frazee ✓ camp ✓
do R. T. H. under way ✓
do Popch. ✓ finished 1/25/59 ✓
Stambrak. lot - W. W. 35. 140-29 ✓
Bill Green ✓ comp ✓
Harry Rose ✓ finished ✓
C. Gustafson ✓ comp. next fall ✓
T. H. lot under way ✓
Newman Nies ✓ comp ✓
Byrne part of Gaut lot 3-12. 140-21 ✓
Burdette ✓
Wilson ✓
Boyle ✓
Young X ✓
McGillivray ✓
G. Sandberg. lot 2. = 2 land lake ✓

lv. kembec.

3125
165

2960

145

165

1615

E 2960 to

147

so there

MW corner Lot 7 Sec 7-137-28

161'

296'

16'

466'

532' 00" E

153' 10" 00"

89° 15'

189'

189'

100'

100'

30'

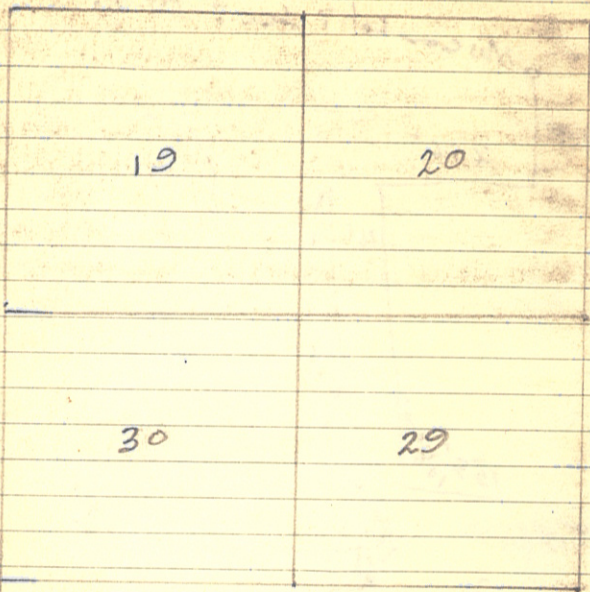
30'

165
200
33,000
42 500

Joe Morvuk

T 143N R 25W.

145' on 300' street - 180' - 160'



256' x 165' x 200' = 33,000 sq ft.
305' x 170' = 39,440 sq ft.

R. Akim
W.D.S. A.

149

Survey for part of

- NE 1/4 SE 4 SEC 17-115-R19
- W. Trac ± 175' E 300' x 250' ±
- N 3/4 30. Ralph & I drive to Ed Kirchners, who goes S us, we find
- 1/4 from Edgar Broadwains Survey
- Set over 300' off right SE & turn N. Get 89°12' L run 250' N RT.
- 89°12' L run 175' set in near out
- Write deed desc & calc. acreage.
- 3/20/2000

Deed for Otto Zell read
 : A part of Grant Lot 6 in S
 23T139NR30W 5th. (Pine Mer.)
 described as follows: From the
 U.S. MC #16 on the east shore
 of Johnson Lake & on the
 south line of said Lot 6 run
 246.7 feet north on 187.5
 feet west to an iron pipe
 placed on the north shore
 of said Johnson Lake at the
 place of beg. thence N20°
 400' to a 2nd iron pipe, thence
 N70° W 200' to a 3rd iron pipe, thence
 S20° W 400' to a 4th iron pipe, thence
 Easterly 200' to the point of beg.

8/14/08 City of W. W. M. S. B. S. 151
 W. J. S. A.
 for Key Office.

From the cor. run S83° 30' W
 700'; N 6° 30' W 476' Pt
 Edge Bay, W. W. M. S. B. S.
 From the cor. N 51° 0'
 to W. W. M. S. B. S. 493'
 to I. M. N. W. cor. Lot 1 Bk 2, W. W. M. S. B. S.

4110
 3235
 137

210 445.00 210
 2000 187 942 79'

27 11.00 105.0
 335 119 716 210
 352.5 2117.6 1029
 716 800
 504

128 212785.3
 336 13926
 464 2785.3
 2648
 1324 5423.3

35 5454.2
 2785.3
 5434.3 2648.3
 4110.2 1324.2
 1324 3973.3

5376
 38
 54342
 186
 6295

5280.00
 87.12
 5192.88 E/ile sec.2

20. ac. Govt.

2415 L
 25

2417 C

11.65
 66

6990

6990

968.70

35

2415

2417

524
 28.48

66

17088

17088

1879.68

11.65
 28.48
 40.13

1879.68

1734.00

145.68

1858.3

1734.8

123.5

154.5

180.0

19998

19148

850

58.22

58.40

4.82

66

2892

2892

318.12

1858

56.5

191

N 83° 30' E
S 83° 30' W

84 42
59 60
58 00
05 48
53 42
59 60
50 18
36 18

W 338 9.5 W
29
77

N 30° 30' W
95° 15' 12 0

20157
2/2785
13925
54
27

9181
2785
2305
25174

af 2785
21992

2785
1334
4109

5434
2785
2648
1324

24175
23172
1002
13783
25197
244175
1402

5513.2
15
12
10
12

24 Nov. 64. cldy & mild. .163
12 May '65 c/c & cool.

We hit old fence in swamp
& old cuttings for line north.
checked north & found fence (old).
corner also old cedar tree blown
down & rotted bears N 75-80° E
6-7'. Tree about 13-14 inch dia
at present. Gov't. notes call for
15" cedar N 81° E 10 links.

¹¹⁰⁰ 24 Nov. 64. Ed & I Δ across
Trelupe Lake. Set on hub on
south side lake 90° E 155°' got
87° 20', 174° 40' in dist. across lake
3328'

12 May '65. Ed. Hendrickson, Jim
Moore & I ⊙ at Lake on W line
74.14 E at 90° from hub 1328'
to st shore & ⊙ 80.19' at 332 E
open line south to Ni line &
N to 35' from H₂O (swpy) at
352 E hub under Ni line, Lt. 76°
30' set hubs 1, 2, 3, 4 (set on)
set 5, 6, 7, 8, (set on) 9, 10, 11 @ 1200'

(2475')

37.50 ch. N. to sec cor in lake
13.50 ch. sec cor N to M.C.
3366' across lake.

⊙ East at lake for true M.C.
72.2'
at 4759' to (1430.6 to st lake)
⊙ E 104.7 feet.

7/29/65. Lat back 400' w of
1/2 line E to N 103° 14'

SE cor 6 E+N 94°29', 276⁵ + 2'[±]
SE cor 7 " " 98°10', 285⁴ + 2'[±]

Lt. 11°05' 22'
Rt 30'15' 20'

Lt. 10°15' 167⁴ + ¹⁵W

Lt. 95°45' ? (42-3)
(H205-6) 8.75N to MC. 1M

Moved SE cor 6, 33' W out
Cor 6 is 73° on back. Add 33 to 7.

29 July '65 ^{ply clay} c/d warm
4 Aug '65 c/d coal. Rain
3 " " c/d warm

E.H. 165
Art Landry
Jim Moen
Bob " "
W.S.S. Jr

29 July '65, Ed, Jim, Art, & Bob & I
pick up E 1/2 line, set 1M (Dixon) at
shore, marked 15" Pop, 4" Ash.

Turn 90° from 1/2 line run 450', 90°
11° E line set straddles, set P.I.
from our back line. Get 948²
at P.I. From P.I., SE cor of lots
make 9 & 8, 112' on back. Set
1M's. 7 & 6, 100' each. #5, 100'
4, 100', #3, 100', #2, 100' & 112'. (111.5)

Art & I chain E side 9, get 285.85
Lot 948' hub Lt 103°14' run
285.85' 1M on shore + 4' to H2O.
Art & I fast base line west.
Owner says ok to change line &
put 6 diff. from 100' point.

¹⁰⁰⁰ 2 Aug '65, Art, Ed, Don & I start
at 1M 400' W of E line. Lt 69°00'
78' L. Lt 11°00'
110' 6/7, 80' L. Rt. ~~39°45'~~ 20' for
5/6, 103' 4/5, 73' L. Lt. 29°30' 27'
3/4, 100' 2/3 Lt 10°30' 167⁴ to
W straddle. 1M 0.5 back for W line.
= 1669 Lot end. L Lt 95°45' ? maybe 42'
356³ SW cor Lot 1. (changed to 357.4')

¹⁰³⁰ 3 Aug '65, Ed, Art & I set on SE cor
Lot 1 E to N 94°38' run 370.5' to NE cor of H2O
SE cor Lot 2 E to N 94°42', 365' + 4' to H2O
SE cor Lot 4 E to N 96°40', 328² 7/4's W # 25' H2O
" " " 5 E to N 99°24', 283³ Lt 4' H2O
← Top Lt Page

AB 07038 01621 06000

Florence Reynolds, Princeton
4th
DC 9064 Ford LTD

March 30

Tues. 6:30

Embers Cafe
Northtown

Beth, Kay - Pat ^{1/2} # 326

325

Bookkeeping Dept.

~~Rolly~~ - Judy - brother sister
→ Baby

Phillip Smith - Beulah Mae

Phillip is married now - Judy is not -

Judy's boyfriend used her car to haul drugs
after shooting. Judy drove P.F. to international
falls
actual shooting is now Canada

2:45
Bill out

Wood Crest

73

11111

10

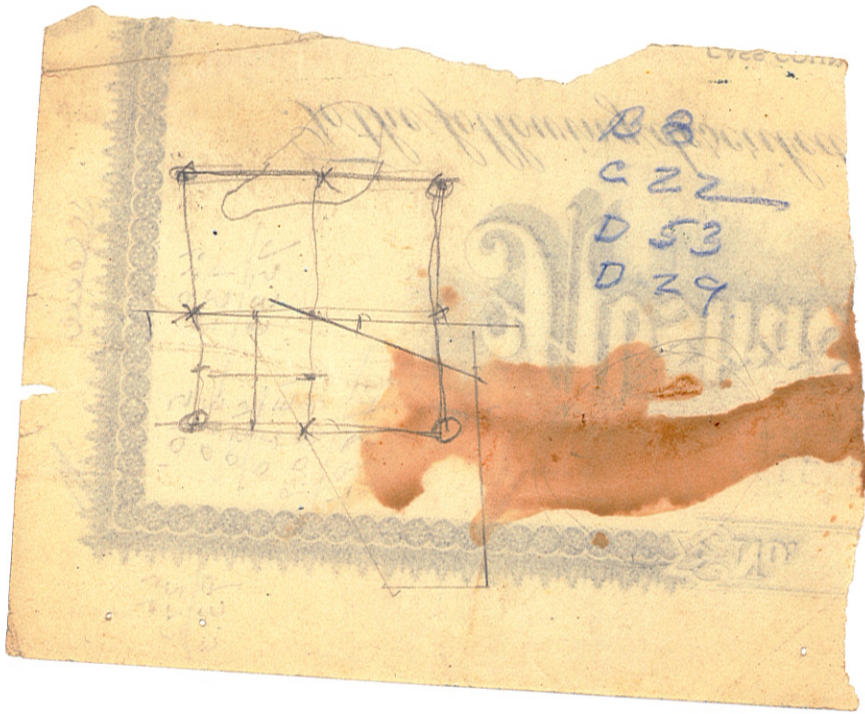
10

55

STATS

NE 1/4 NW 4 30-140-30 E of R.R.





66
273
933

No.

510
360
450
1890.9
4891

660
933
7533

Abstract

To the following described

CASS COUNTY