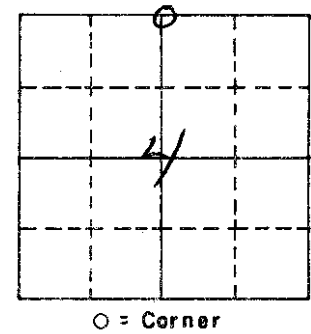


Index No. A11

CASS COUNTY LAND CORNER RECORD

T. 139 R. 28 M. 5th Coordinates: X N14 4 Y 4 AND 33-140-28

Corner common to sections 4 AND 33-140-28



EXISTING SURVEYS

Original Government Survey
 Year surveyed 1863
 Original monument POST

Bearing Trees
 Species NO TREES CONVENIENT
 Diameter _____
 Bearing PILE OF STONES AROUND POST
 Distance _____

Original Evidence Found
 Year of search _____ By _____
 Monument found _____

Original Bearing Trees Found
 Species _____
 Diameter _____
 Bearing _____
 Distance _____

Subsequent Corner Restoration
 Year surveyed 1972 By BEN CLARK
 Location filed COUNTY RESURVEY "E-9"
 Monument R.OAK MONUMENT
1919, BEN CLARK, COUNTY BOOK "C" P.329 FND I.P.

Evidence of Subsequent Corner Restoration
 Year of search 1980 By CO HWY DEPT.
FND 2" I.P. IN PLACE COR# 47
1942, JOHN CURRY, BOOK "D" P.325 FND CORNER
1938 - CCC - WASHINGTON LAKE - BK# 13 P. 7
at 2640' from east set approx 14 cor 3" Birch - fnd
B.T: 20" N.PINE N84 1/2 W 87'

Bearing Trees, Reference Objects
 Species N.PINE N.PINE
 Diameter 16" 12"
 Bearing N20W N12E
 Distance 50.5' 29.5'

Bearing Trees, Reference Objects
 Species R.OAK BIRCH BIRCH
 Diameter 12" 14" 10"
 Bearing ENE ESE SE
 Distance 76.5' 82.0' 74.0'

A-11 Subsequent Corner Restoration

Year surveyed 2/2000 By CCSO
 Location filed #98025
 Monument Found 3/4" pin, down o.l., on
E. Co. Rd #47.

15" Birch S24°W 82.00'
7" Birch clump S38°W 73.96'
12" R.Oak South 78.64' *
12" Balsam N.40°E 90.27' *
 *distances to double head nail

Evidence of Subsequent Corner Restoration Found

Year of search _____ By _____
PLAT - AUSTIN'S WABERS PINECREST ACRES
W.J. SPAIN JR 1959

Corner GPS CCSO 8/1/02
CCSO fd. 1" Pin on E. Co. Rd. #47

Remonumentation certificate prepared _____
 Filed at _____

By _____
 Date _____