

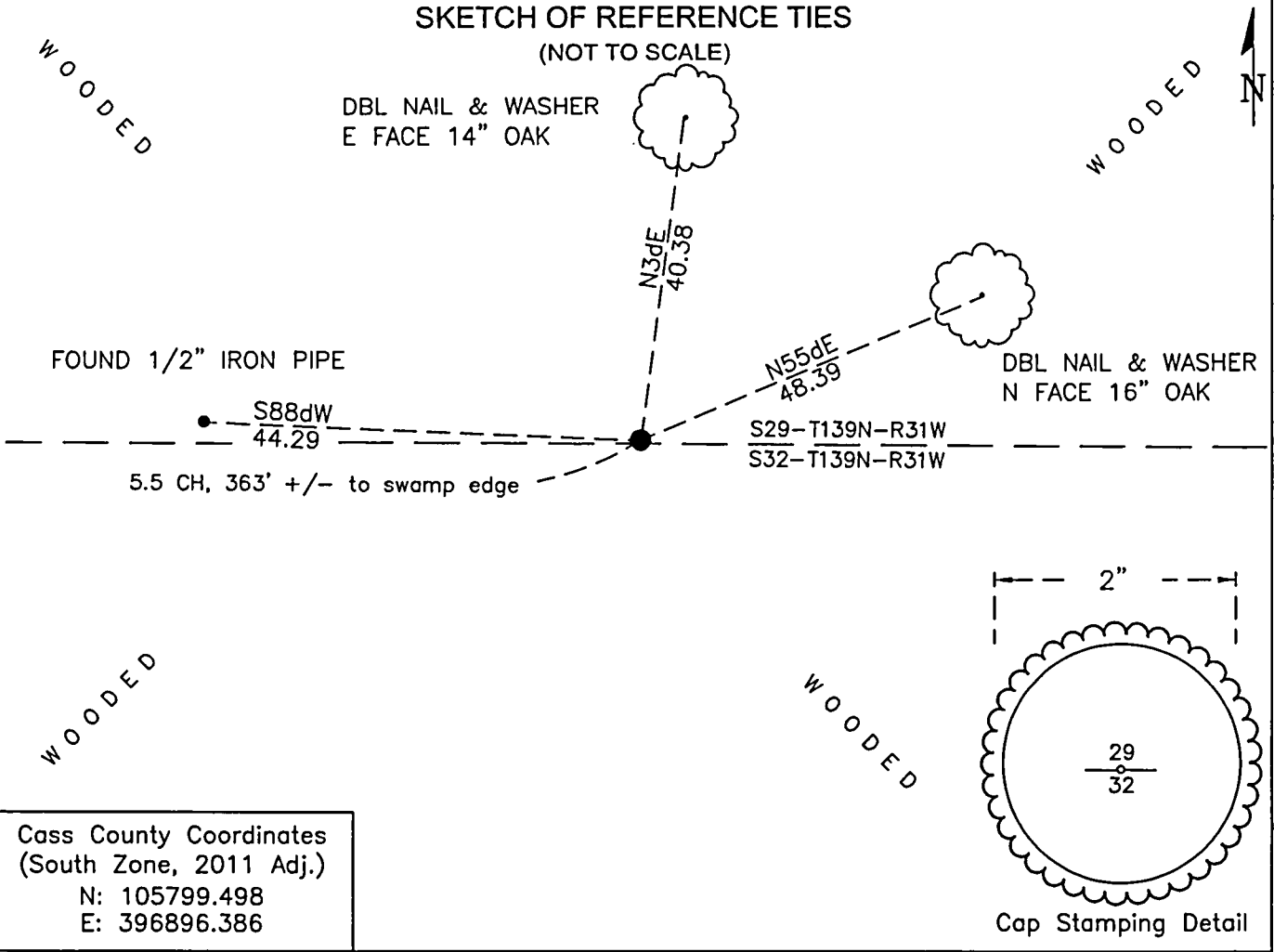
# CERTIFICATE OF LOCATION OF GOVERNMENT CORNER

North 1/4 Corner of Section 32, Township 139 N, Range 31 W, 5th P.M.  
 County of Cass, State of Minnesota

At the corner location shown on the sketch:

- On 5/16/23 found 1/2 inch diameter iron pipe at a "lost position"
- left monument as found     lowered monument     removed monument (explain)
- On 5/16/23 set 32 in alum pipe with a 3.5in aluminum cap utilizing  
defined feature call/swamp edge.

### SKETCH OF REFERENCE TIES (NOT TO SCALE)



Cass County Coordinates  
 (South Zone, 2011 Adj.)  
 N: 105799.498  
 E: 396896.386

Statement of evidence relative to this corner location is on the back of this page

I hereby certify that this survey, plan, or report was prepared by me or under my direct supervision and that I am a duly Licensed Land Surveyor under the laws of the state of Minnesota.

*Daniel J. McAninch*  
 Daniel J. McAninch  
 Cass County Surveyor  
 MN License No. 25684

22 May 2024  
 Date



**STATEMENT OF EVIDENCE:**

**NORTH QUARTER CORNER OF SECTION 32,  
TOWNSHIP 139 NORTH, RANGE 31 WEST,  
CASS COUNTY, MINNESOTA**

- 1870** The township exterior of original public land survey was completed under Mahlon Black. A wood post was set at this corner and ties were taken as follows.
- |            |          |                      |
|------------|----------|----------------------|
| 14" W Pine | S57d30'W | 77 links (50.8 feet) |
| 10" Aspen  | N12dWE   | 48 links (31.7 feet) |
- 2009** A survey for Minnesota Power for a power line easement passing through Section 32, signed by Michael Cannon, L.S. 40035, shows a found monument symbol for this corner but provides no dimensions or monument details.
- 2021** A Cass County survey crew recovered a ½" iron pipe which fit very poorly with the swamp call to the West. Upon review of evidence, it was decided that the distance to the swamp edge would be utilized to set this corner as being the best available evidence of the original corner.  
(Cass County Proj. 2022-029, CCSO Cert of Survey #10099)

**CASS COUNTY COORDINATES (NAD 83 2011 ADJUSTMENT, NORTH ZONE)**  
N-105799.498  
E-396896.386

General Land Office Information on file in the MN historical Society, St. Paul MN. Copies on file in the Cass County Highway Department/Surveyors Office (CCHD/SO).

For additional information contact:  
**Cass County Highway Department**  
**County Surveyor's Office**  
8045 County Road 12  
Walker, MN 56484  
218-547-1211



**A000702938**

**OFFICE OF THE COUNTY RECORDER  
CASS COUNTY, MINNESOTA  
CERTIFIED, FILED, AND/OR  
RECORDED ON**

**5/22/2024 9:36:14 AM**

**AS DOC #: A000702938  
PAGES: 2  
REC FEES: 0.00**

**BY CF Dep TX#: 196682**