



A000702746

OFFICE OF THE COUNTY RECORDER
CASS COUNTY, MINNESOTA
CERTIFIED, FILED, AND/OR
RECORDED ON

5/16/2024 1:21:59 PM

AS DOC #: A000702746
PAGES: 2
REC FEES: 0.00

BY SF _____ Dep TX#: 196577

Page 1 of 2 A000702746

I hereby certify that this survey, plan, or report was prepared by me or under my direct supervision and that I am a duly Licensed Land Surveyor under the laws of the state of Minnesota.

Daniel J. McAninch 16 May 2024
Daniel J. McAninch Date
MN LIC. #25684

CERTIFICATE OF LOCATION OF GOVERNMENT CORNER

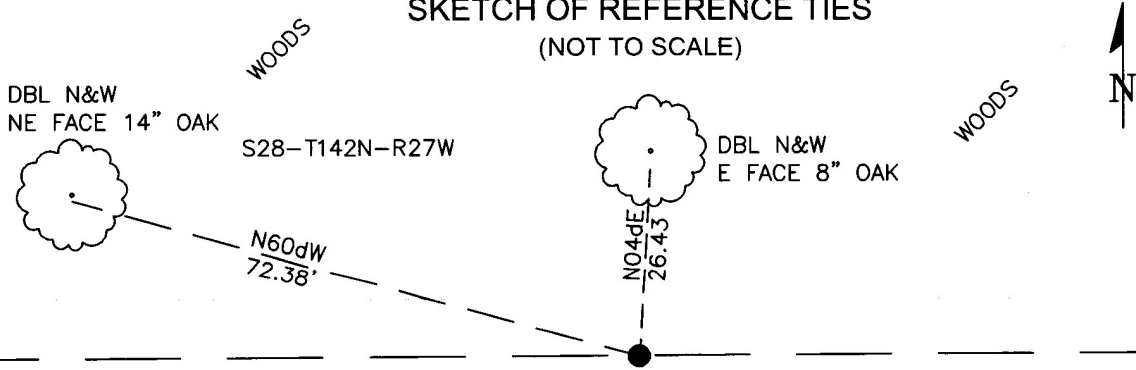
NORTH 1/4 Corner of Section 33, Township 142 N, Range 27 W, 5th P.M.
County of Cass, State of Minnesota

At the corner location shown on the sketch:

- On Nov. 27, 2023 found 3" diameter G.L.O. brass monument.
- left monument as found lowered monument removed monument (explain)
- On _____ set _____

SKETCH OF REFERENCE TIES

(NOT TO SCALE)



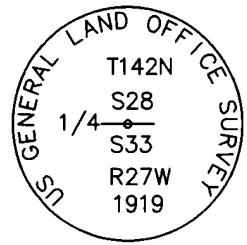
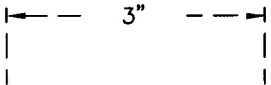
TOBIQUE ROAD N.E.

GRAVEL ROAD

S33-T142N-R27W

WOODS

WOODS



Cap Stamping Detail

Cass County Coordinates
(North Zone, 2011 Adj.)
N: 201216.407
E: 527745.373

STATEMENT OF EVIDENCE: NORTH QUARTER CORNER OF SECTION 33,
TOWNSHIP 142 NORTH, RANGE 27 WEST,
(Rogers Township) CASS COUNTY, MINNESOTA

1870 During the original survey of the township a wood post was set, by a GLO crew under P.H. Conger, to mark the corner. The bearing ties were set. Copies on file in the Cass County Highway Department/Surveyors office. (CCHD/SO).

4" Poplar	S32dW	28 links (18.5')
4" Poplar	N75dE	10 links (6.6')

1919 During a dependent resurvey the General Land Office found and accepted a decayed wooden stake as marking the original corner. They set a 3 foot long iron post 28 " in the ground with a stamped brass cap.

NEW BTs		
6" Red Oak	S41d15'E	44 links
12" Jack Pine	N33d30'W	43 links

2023 A Cass County survey crew found the G.L.O. brass capped monument 0.3 feet down in an East-West gravel road while conducting a survey for a proposed bridge replacement. See page 1 for new ties.

CASS COUNTY COORDINATES (NAD 83 2011 ADJUSTMENT)

N-201216.407

E-527745.373

General Land Office Information on file in the MN historical Society, St. Paul MN. Copies on file in the Cass County Highway Department/Surveyors Office (CCHD/SO).

For additional information contact:
Cass County Highway Department
County Surveyor's Office
8045 County Road 12
Walker, MN 56484
218-547-1211