



A000702614

OFFICE OF THE COUNTY RECORDER
CASS COUNTY, MINNESOTA
CERTIFIED, FILED, AND/OR
RECORDED ON

5/10/2024 11:11:01 AM

AS DOC #: A000702614
PAGES: 2
REC FEES: 0.00

BY CF _____ Dep TX#: 196454

I hereby certify that this survey, plan, or report was prepared by me or under my direct supervision and that I am a duly Licensed Land Surveyor under the laws of the state of Minnesota.

Daniel J. McArinich 10 May 2024
Daniel J. McArinich Date
MN LIC.# 25684

Page 1 of 2 A000702614

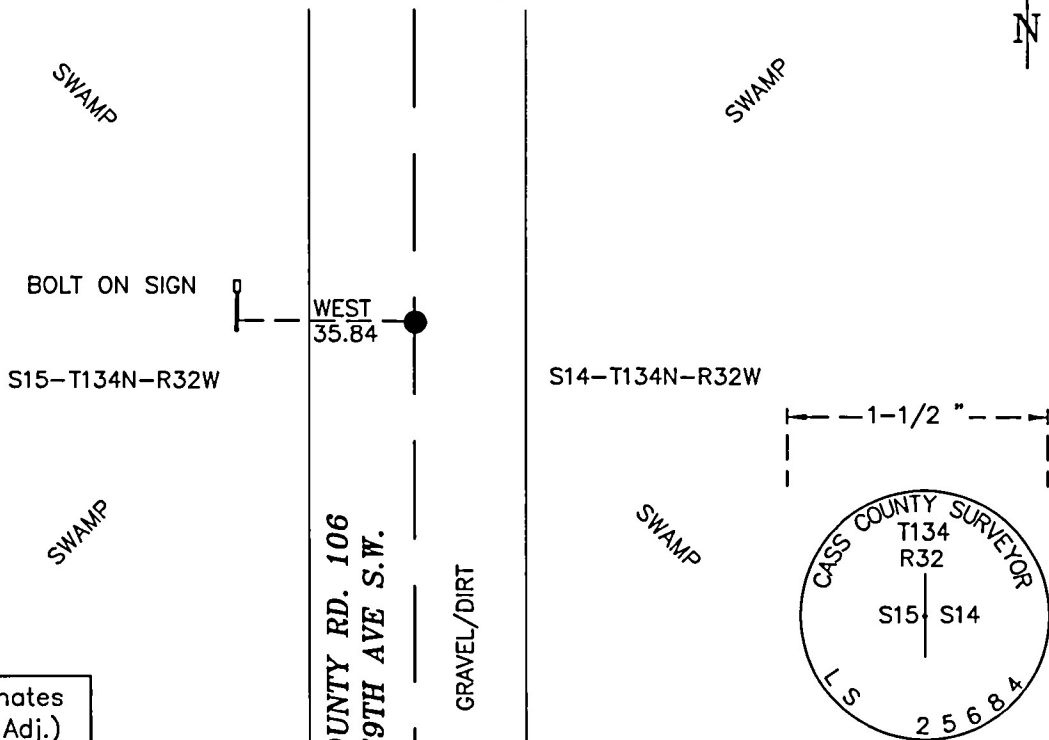
CERTIFICATE OF LOCATION OF GOVERNMENT CORNER

EAST QUARTER Corner of Section 15, Township 134 N, Range R32 W P.M. 5th
County of Cass, State of Minnesota

At the corner location shown on the sketch:

- On _____ found _____
- left monument as found lowered monument removed monument (explain)
- On March 7, 2024 set 1/2" diameter x 18" long iron pipe with 1-1/2" diameter stamped aluminum cap.

SKETCH OF REFERENCE TIES (NOT TO SCALE)



Cass County Coordinates
(North Zone, 2011 Adj.)
N: 193617.002
E: 444875.476



STATEMENT OF EVIDENCE:

**EAST QUARTER CORNER OF SECTION 15,
TOWNSHIP 134 NORTH, RANGE 32 WEST,
(Becker Township) CASS COUNTY, MINNESOTA**

1870 During the original subdivision survey of this township a wood post was set, by a GLO crew under William P. Allen, to mark the corner. The bearing ties were set. Copies on file in the Cass County Highway Department/Surveyors office. (CCHD/SO).

5" Tamarac	N42dW	8 links (5.3')
4" Tamarac	S58dE	6 links (4.0')

1960 Aerial photos available through Cass County records clearly show an North-South road along the presumed common line between Sections 15 and 14.

2023 A Cass County Survey crew conducted a search for physical evidence and then set a one half inch diameter iron pipe midway on line between previously established section corners. The location fell near the travelled centerline of County Road 106.

CASS COUNTY COORDINATES (NAD 83 2011 ADJUSTMENT)
N-193617.002
E-444875.476

General Land Office Information on file in the MN historical Society, St. Paul MN. Copies on file in the Cass County Highway Department/Surveyors Office (CCHD/SO).

For additional information contact:
Cass County Highway Department
County Surveyor's Office
8045 County Road 12
Walker, MN 56484
218-547-1211