

CERTIFICATE OF LOCATION OF GOVERNMENT CORNER

Northeast Corner of Section 23, Township 134 N, Range 32 W, 5th P.M.
County of Cass, State of Minnesota

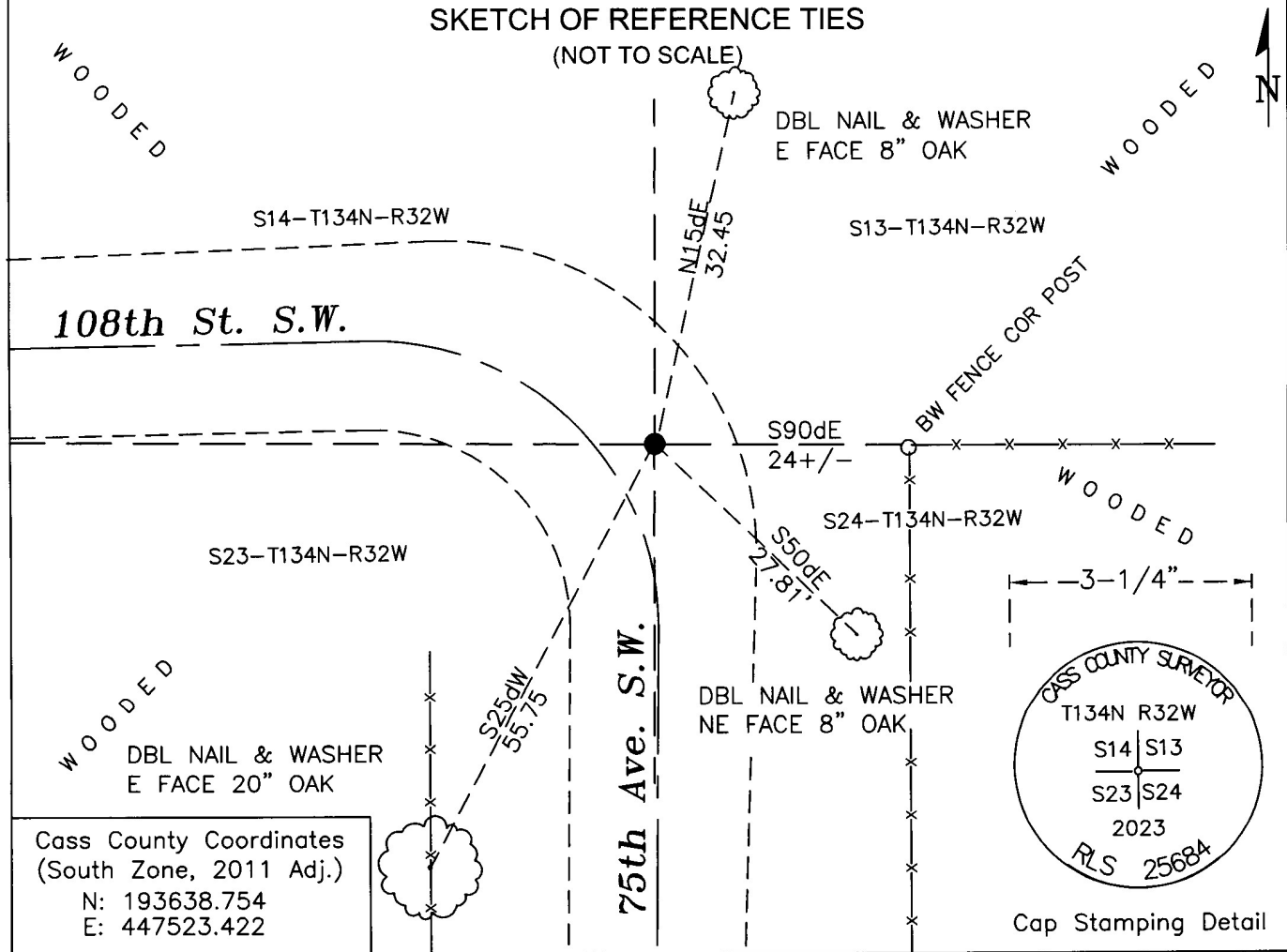
At the corner location shown on the sketch:

- On _____ found _____
- left monument as found lowered monument removed monument (explain)
- On December 19, 2023 set a 3/4"x32" alum. pipe with a 3-1/4" diameter aluminum cap at C.L. of gravel township road running South and fence line running East.

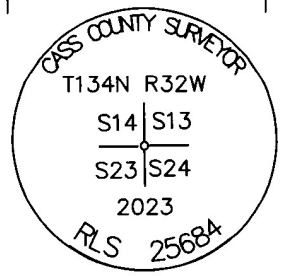
Page 1 of 2 A000702540

SKETCH OF REFERENCE TIES

(NOT TO SCALE)



Cass County Coordinates
(South Zone, 2011 Adj.)
N: 193638.754
E: 447523.422



Cap Stamping Detail

Statement of evidence relative to this corner location is on the back of this page

I hereby certify that this survey, plan, or report was prepared by me or under my direct supervision and that I am a duly Licensed Land Surveyor under the laws of the state of Minnesota.

Daniel J. McAninch 8 May 2024
 Daniel J. McAninch Date
 Cass County Surveyor
 MN License No. 25684

STATEMENT OF EVIDENCE:

NORTHEAST CORNER OF SECTION 23,
TOWNSHIP 134 NORTH, RANGE 32 WEST,
(Becker Township) CASS COUNTY, MINNESOTA

1870 During the original survey of the of township exteriors a wood post was set, by a GLO crew under William P. Allen, to mark the corner. The bearing ties were set. Copies on file in the Cass County Highway Department/Surveyors office. (CCHD/SO).

8" Black Pine	N16dW	29 links (19.1')
7" Black Pine	S64dE	11 links (7.3')
8" Black Pine	S18d30'W	27 links (17.8')
14" Norway Pine	N54dE	34 Links (22.4')

1960 Aerial photo 11-111 available through Cass County records clearly show a North-South road and double tree lines along the presumed common line between Sections 23 and 24 and also a westerly running road and tree lines along the presumed common line between Sections 14 and Section 23.

1991 Becker Township indicates the location of claimed Township Road T26 running along the section lines southerly and westerly that meet at this corner. (Doc. A000327814)

2006 A Certificate of Survey by Ronald Cornell Sr., L.S. 43415, of land in Section 24 indicates a computed northwest section corner position at a fence corner but no monument was set. (Cass County C.O.S. 3226)

2019 Paul Herkenhoff, L.S 45875 certifies the SE corner of Section 23 being a found iron monument at the centerline of roads North-South and East. (Doc A000652793)

2023 The Cass County Surveyor rejected the computed position from 2006 and set an aluminum monument on the centerline of the gravel road running South and the westerly extension of a fence line running easterly. This position accepts the township road running South and the fenceline running easterly as perpetuations of the original PLS line. This location measures reasonably to established PLS corners to the North, South and West. (CCSO Proj. 2023-018)

CASS COUNTY COORDINATES (NAD 83 2011 ADJUSTMENT)

N-193638.754

E-447523.422

General Land Office Information on file in the MN historical Society, St. Paul MN. Copies on file in the Cass County Highway Department/Surveyors Office (CCHD/SO).

For additional information contact:
Cass County Highway Department
County Surveyor's Office
8045 County Road 12
Walker, MN 56484
218-547-1211

**A000702540**

OFFICE OF THE COUNTY RECORDER
CASS COUNTY, MINNESOTA
CERTIFIED, FILED, AND/OR
RECORDED ON

5/8/2024 11:33:09 AM

AS DOC #: A000702540

PAGES: 2

REC FEES: 0.00

BY KF Dep TX#: 196400