



A000702355

OFFICE OF THE COUNTY RECORDER
CASS COUNTY, MINNESOTA
CERTIFIED, FILED, AND/OR
RECORDED ON

4/29/2024 4:06:46 PM

AS DOC #: A000702355

PAGES: 3

REC FEES: 0.00

BY CF _____ Dep TX#: 196242

I hereby certify that this survey, plan, or report was prepared by me or under my direct supervision and that I am a duly Licensed Land Surveyor under the laws of the state of Minnesota.

Jacob M. Backowski 4/26/2024
Jacob M. Backowski Date

CERTIFICATE OF LOCATION OF GOVERNMENT CORNER

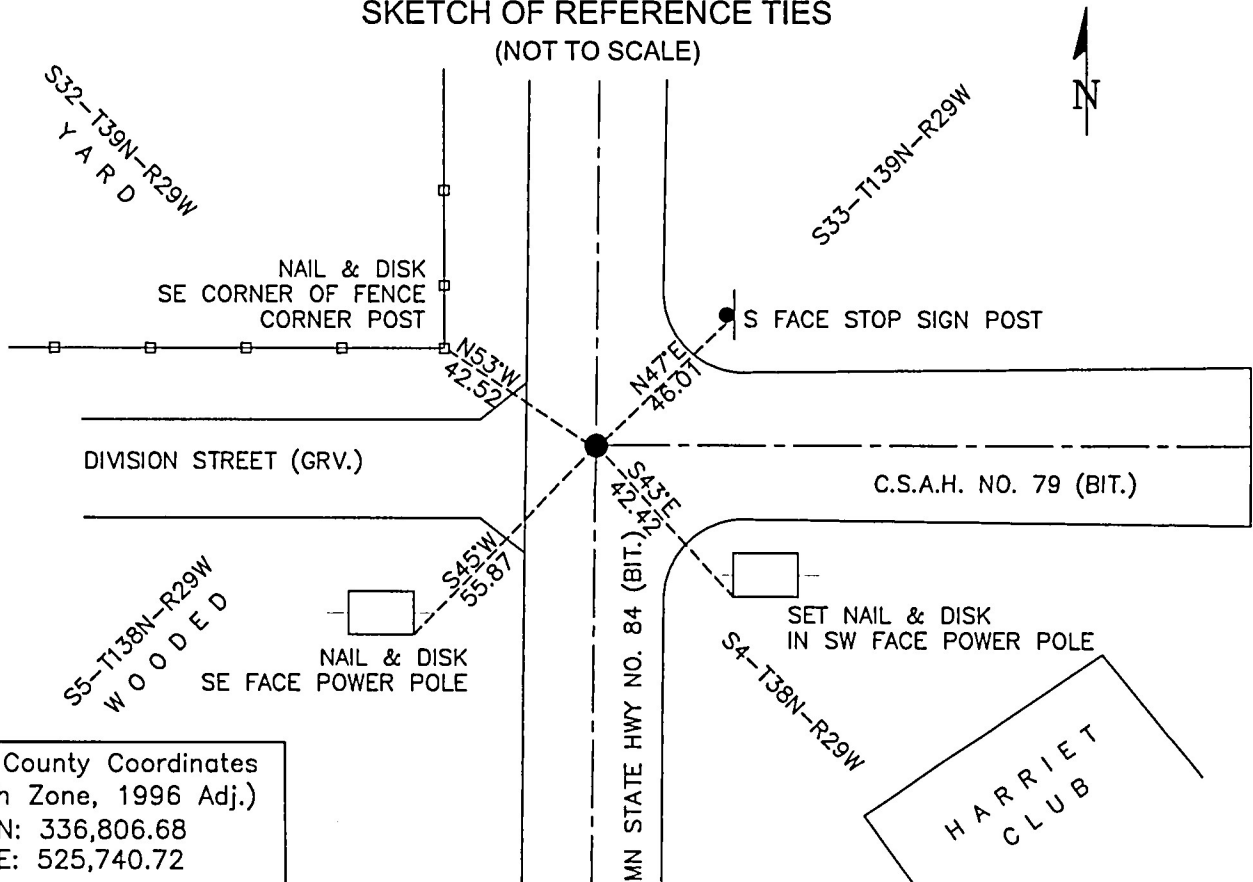
Northeast Corner of Section 5, Township 138 N, Range 29 W, 5th P.M.
County of Cass, State of Minnesota

At the corner location shown on the sketch:

- On June 23, 2023 found 1/4" iron pin at the intersection of MN Hwy No. 84 and C.S.A.H No. 79, 1.0 feet below the surface
- left monument as found lowered monument removed monument (explain)

On _____ set _____

SKETCH OF REFERENCE TIES (NOT TO SCALE)



Cass County Coordinates
(South Zone, 1996 Adj.)
N: 336,806.68
E: 525,740.72

Page 1 of 3
A000702355

Statement of Evidence**Northeast Corner Section 5 T138N, R29W**DATE

1865 The US General Land Office field notes, by Wright & Walker on file in the Secretary of State's Office, show this corner marked with a post and referenced by the following bearing trees:

Black Pine 9", N 54° E, 27 links
 Black Pine 7", N 62° W, 19 links
 Black Pine 5", S 60° W, 24 links
 Black Pine 6", S 47° E, 8 links

1910 John Curo, LS 1428, May 13, 1910, recovered this corner location and found the NW & SW bearing trees and also the stump of the NE. He set the corner by measurement from these. According to Curo Book Misc. 005 Page 11. Information on file with the Cass County Surveyors Office.

1916 John Curo, LS 1428, May 13, 1910, references this corner location and commences his survey to establish the true 1/16 corner west on the south side of Section 32 T139 R29. According to Curo Book 54A Page 42. Information on file with the Cass County Surveyors Office.

1919 Cass County Ditch notes, Book DB1 100, Page 24, May 31, 1919, references this corner location. Book DB1 100, Page 76, May 30, 1919, shows this corner location with 2 reference points:

"X" in fence post, SW, 41.0'
 "X" in small Jack Pine, SE, 46.1'

Information on file with the Cass County Surveyors Office

1935 John Curo, LS 1428, July 15, 1935, references that he established this corner 20 years ago for a road to the north. And it was used to construct the roads in this area. He drove a 60d spike at the crossroads of 4 roads N-S-E-W and sets new ties:

Telephone Pole, NE, 32.45'
 Telephone Pole, NW, 26.70'
 Telephone Pole, SE, 33.90'
 Iron Sign Post, SW, 40.05'

According to Curo Book A3 Page 34. Information on file with the Cass County Surveyors Office.

1936 John Curo, LS 1428, March 12, 1936, visits this corner location for a survey in Section 4, and finds the stumps of all four original BTs and his old hub and drives a 60d spike in center according to Curo Book 419 Page 017, Information on file with the Cass County Surveyors Office.

1940 John Curo, LS 1428, recovered his temp corner spike in centerline of N-S-E-W roads, he references his location set in 1935, a temp corner that lies 6.10' north of the Section Corner and resets the corner. according to Curo Book 247 Page 09, Information on file with the Cass County Surveyors Office.

1991 MNDOT Construction Plans for C.S.A.H. No. 79, Project No. S.A.P. 11-679-01 shows this corner location at the intersection of C.S.A.H. No. 79 and MN State Hwy No. 84.

1997 David Landecker, Landecker & Associates, LS 17008, references this corner location as a found iron monument, on a Certificate of Survey for part of Government Lot 6 of Sec. 33, T139N R29W. Information on file with the Cass County Surveyors Office.

1998 David Landecker, Landecker & Associates, LS 17008, references this corner location as a found iron monument at the intersection of State Highway No. 84 and C.S.A.H. No. 79, on a Certificate of Survey for part of the Northwest Quarter of the Northwest Quarter of Sec. 4, T138N R29W. Information on file with the Cass County Surveyors Office.

Statement of Evidence

Northeast Corner Section 5 T138N, R29W

- 1998 David Landecker, Landecker & Associates, LS 17008, references this corner location as a found iron monument, on a Certificate of Survey for part of Government Lot 6 of Sec. 33, T139N R29W. Information on file with the Cass County Surveyors Office.
- 2000 Bruce Grivina, Central Minnesota Surveying, LS 17253, references this corner location on a Certificate of Survey for the Northwest Quarter of the Northeast Quarter of Sec. 4, T138N R29W. Information on file with the Cass County Surveyors Office.
- 2003 Bruce Grivina, Westwood Professional Services, LS 17253, references this corner location, as a found iron pipe, on a Certificate of Survey for the part of the East Half of the Northwest Quarter of the Northeast Quarter of Sec. 4, T138N R29W. Information on file with the Cass County Surveyors Office.
- 2003 David Landecker, Landecker & Associates, LS 17008, references this corner location as a found iron monument, on a Certificate of Survey for part of Government Lot 6 of Sec. 33, T139N R29W. Information on file with the Cass County Surveyors Office.
- 2008 Jame Nielson, LS 11865, references this corner location, as a found iron monument, on a Certificate of Survey for the parts of Government Lots 3 & 4 of Sec. 32, T139N R29W. Information on file with the Cass County Surveyors Office.
- 2013 Jame Nielson, LS 11865, references this corner location, as a found iron monument, on a Certificate of Survey for the parts of Government Lots 3 & 4 of Sec. 32, T139N R29W. Information on file with the Cass County Surveyors Office.
- 2020 Chad Conner, Widseth Smith Nolting, LS 41643, references this corner location, on a Certificate of Survey for part of Government Lot 6 of Sec. 33, T139N R29W. Information on file with the Cass County Surveyors Office.
- 2023 Jacob Backowski, True North Surveys, LS 51693 searched for, and found a 1/4" Iron Pin at the intersection of MN State Hwy No. 84 and C.S.A.H No. 79 approximately 1.0' below the surface of the road. Referencing previous surveys utilizing this corner and the Curo records, this location matches distances North, South, East and West and was accepted at the corner location and referenced by the following:

Fence Corner Post, N 53° W, 42.52'
 South Face of Stop Signpost, N 47° E, 46.01'
 Power Pole, S 43° E, 42.42'
 Power Pole, S 45° W, 55.87'