



A000701408

OFFICE OF THE COUNTY RECORDER
CASS COUNTY, MINNESOTA
CERTIFIED, FILED, AND/OR
RECORDED ON

3/19/2024 12:00:57 PM

AS DOC #: A000701408

PAGES: 2

REC FEES: 0.00

BY CF Dep TX#: 195451

Page 1 of 2 A000701408

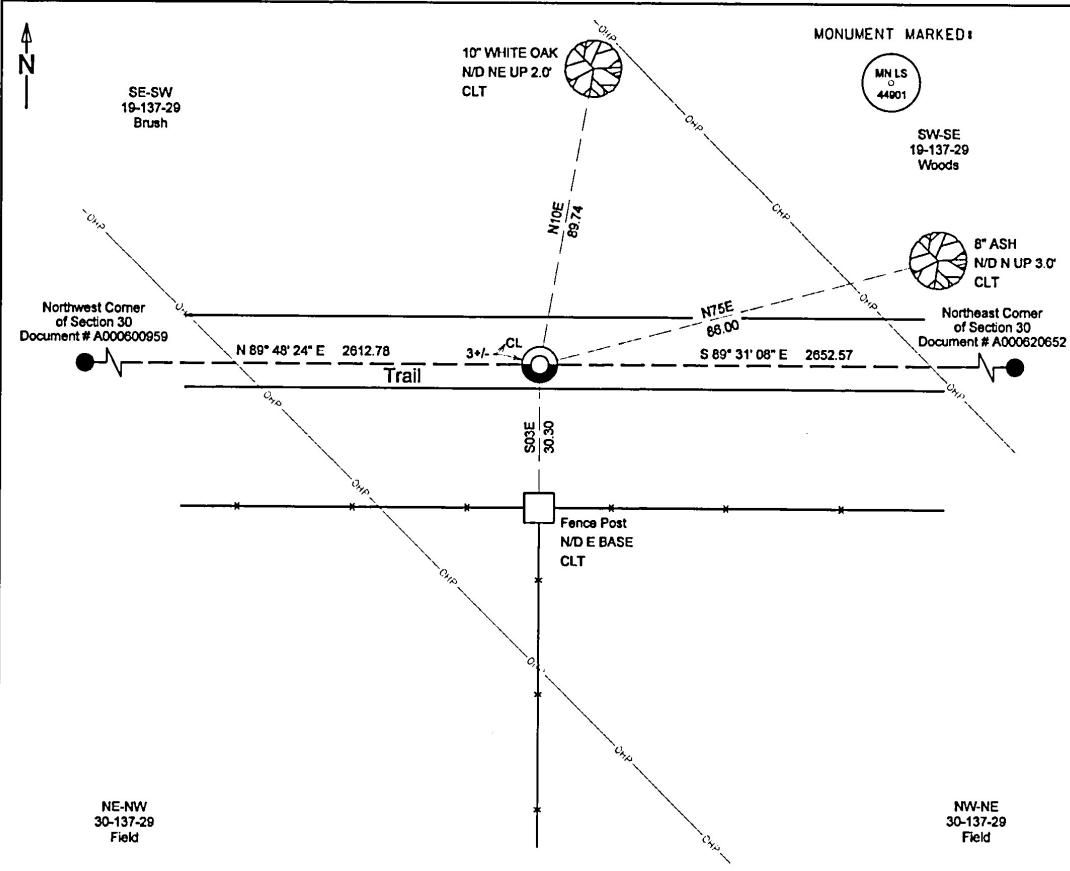
Index No. R-3

CERTIFICATE OF LOCATION OF GOVERNMENT CORNER

INDEX NO. R-3, North Quarter CORNER OF SECTION 30, TOWNSHIP 137, RANGE 29,
STATE OF MINNESOTA, COUNTY OF CASS.

AT THE CORNER LOCATION SHOWN ON THE SKETCH:

- ON 01-29-2024 FOUND A(N) IRON PIPE WITH PLASTIC CAP STAMPED "MN LS 44901" FLUSH
- LEFT MONUMENT AS FOUND, LOWERED MONUMENT, REMOVED MONUMENT (EXPLAIN)
- ON _____ DATE PLACED A(N) _____



I hereby certify that this survey, plan, or report was prepared by me or under my direct supervision, and that I am a duly Licensed Land Surveyor under the laws of the State of Minnesota. I further certify that this certificate of location of government corner is correct and complete to the best of my knowledge and belief.

Signature: James Kramer
Date: 3-14-2024
Reg. No. 23668

NAD 1983/1996 CASS COUNTY COORDINATES
N= 283848.112 E= 517200.474
Coordinates derived by RTK GPS (survey grade)

SKETCH OF REFERENCE TIES
(not to scale - bearings are magnetic)
Ties are measured to center of monument unless otherwise noted
UNITS = Metric English

KLD
1120 Industrial Park Road SW
Brainerd, MN 56401
218-258-6332

KRAMER LEAS DELEO
SURVEYING • ENGINEERING • PLANNING
BRainerd • ST. CLOUD

STATEMENT OF EVIDENCE: NORTH QUARTER CORNER OF SECTION 30,
TOWNSHIP 137 NORTH, RANGE 29 WEST, CASS
COUNTY, MINNESOTA

1865 The original public land survey was run for Township 137 Range 29 West. Chaining East between sections 19 & 30, at 39.46 chains a wood post was set to mark the corner along with the following bearing ties. Information on file in the MN historical Society, St. Paul MN. Copies on file in the Cass County Highway Department/Surveyors Office (CCHD/SO).

6" White Pine	N51W	18 links (11.88)
9" Norway Pine	S71W	56 links (36.96)

George B. Wright
Thomas B. Walker
U.S. Deputy Surveyor

1909 John Curo recovered the two original bearing ties, one stump and one still standing.

(1965) White Pine Stump	N51W	11.90
(1965) 9" Norway Pine	S71W	37.00

County Surveyor Record Book A, Pages 318-328
Microfilm Roll 105, Book 48, Pages 6-7

1910 John Curo went to old corner, and ran east to proportion in the Northeast corner of Section 30. The survey shows a distance of 2614.00 from the North Quarter corner to the Northwest Corner of Section 30, and 2651.00 from the North Quarter to the Northeast Corner of Section 30.

Microfilm Roll 115, Book 91, Page19

1914 John Curo Surveyor's Report indicates an iron marking the corner location.

Township Road Orders & Township File

2024 Crews at Kramer Leas Deleo recovered on iron pipe with plastic cap stamped "RLS 44901." The recovered iron pipe fits the intersection of an East-West bearing centerline with a fence line bearing South. The monument also fits the 1910 Curo distances along the north line of Section 30 well. The recovered monument is accepted as the best available evidence of the corner location. The following bearing ties were also recovered.

(2009) Fence Post	S03E	30.30
(2009) 8" Ash	N75E	86.00
(2009) 10" White Oak	N10E	89.74

The recovered bearing ties had 2009 CLT's posted with the following bearing and distances measured to the corner.

Fence Post	N05E	29.92
8" Ash	S10W	86.12
10" White Oak	S80W	89.83

For additional information contact:
Kramer Leas Deleo PC
1120 Industrial Park Road Southwest
Brainerd, MN, 56401
218-829-5333