



A000697048

OFFICE OF THE COUNTY RECORDER
CASS COUNTY, MINNESOTA
CERTIFIED, FILED, AND/OR
RECORDED ON

9/13/2023 11:04:24 AM

AS DOC #: A000697048

PAGES: 2

REC FEES: 0.00

KATHRYN M. NORBY
CASS COUNTY RECORDER

BY SF Dep TX#: 191841

I hereby certify that this survey, plan, or report was prepared by me or under my direct supervision and that I am a duly Licensed Land Surveyor under the laws of the state of Minnesota.

Daniel J. McAninch 12 September 2023
Date
Daniel J. McAninch
MN LIC.# 25684

Page 1 of 2 A000697048

CERTIFICATE OF LOCATION OF GOVERNMENT CORNER

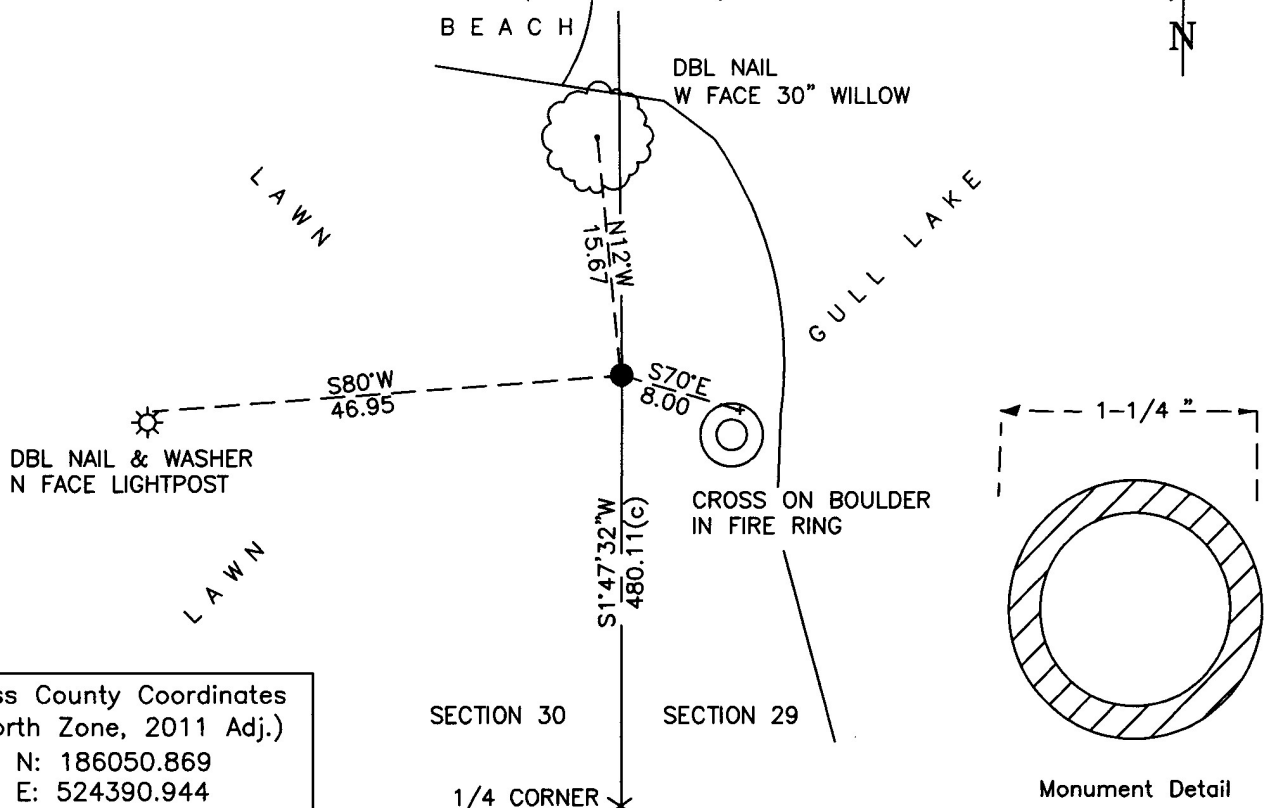
W.C. MEANDER Corner of Section 30, Township 134 N., Range 29, W P.M. 5th
County of Cass, State of Minnesota

At the corner location shown on the sketch:

- On AUG 22, 2023 found a 1-1/4" diameter iron pipe, near the shore on the
property of Cragun's Resort, down 0.2 feet.
- left monument as found lowered monument removed monument (explain)
- On _____ set _____

SKETCH OF REFERENCE TIES

(NOT TO SCALE)



Cass County Coordinates
(North Zone, 2011 Adj.)
N: 186050.869
E: 524390.944

STATEMENT OF EVIDENCE:

WITNESS CORNER TO MEANDER CORNER 44 OF
SECTION 20 AND 30, TOWNSHIP 134 NORTH,
RANGE 29 WEST, SHINGOBEE TWP.,
CASS COUNTY, MINNESOTA

- 1865** The original public land survey was completed by Wright and Walker and a wood post was set to mark the corner 9.05 chains (594 feet) North of the East Quarter Corner of Section 30. The bearing ties were set. Copies on file in the Cass County Highway Department/Surveyors office. (CCHD/SO).
- | | | |
|-----------------|-------|------------------|
| 14" Norway Pine | S45dW | 28 links (18.5') |
| 14" Norway Pine | N88dE | 19 links (12.5') |
- 1993** A certificate of survey Jeffrey Miller of Widseth, Smith, Nolting shows the section line projecting through the main Cragun Lodge building and a point on Gull Lake.(CCSO #1349)
- 2005** A Certificate of Survey by Chad Conner of Widseth Smith Nolting shows the monumented East line of the SE ¼ of the SE ¼ of Section 30 with the section line drawn through a point of land on the Cragun's parcel shown on the survey. (CCSO COS #2856)
- 2022** A Cass County survey crew conducted a thorough search for the meander corner. A 1-1/4" witness corner monument was found near the shore of Gull Lake which lined up well with the section line to the south. This monument was accepted as the best available evidence of a witness corner to the meander corner and section line.

CASS COUNTY COORDINATES (NAD 83 2011 ADJUSTMENT)**N-186050.869****E-524390.944**

General Land Office Information on file in the MN historical Society, St. Paul MN. Copies on file in the Cass County Highway Department/Surveyors Office (CCHD/SO).

For additional information contact:
Cass County Highway Department
County Surveyor's Office
8045 County Road 12
Walker, MN 56484
218-547-1211