



A000691832

OFFICE OF THE COUNTY RECORDER
CASS COUNTY, MINNESOTA
CERTIFIED, FILED, AND/OR
RECORDED ON

2/16/2023 10:18:49 AM

AS DOC #: A000691832

PAGES: 2

REC FEES: 0.00

KATHRYN M. NORBY
CASS COUNTY RECORDER

BY SF Dep TX#: 187457

I hereby certify that this survey, plan, or report was prepared by me or under my direct supervision and that I am a duly Licensed Land Surveyor under the laws of the state of Minnesota.

Daniel J. McAninch 16 February 2023
Daniel J. McAninch Date
Cass County Surveyor
MN. L.S. 25684

Page 1 of 2 A000691832

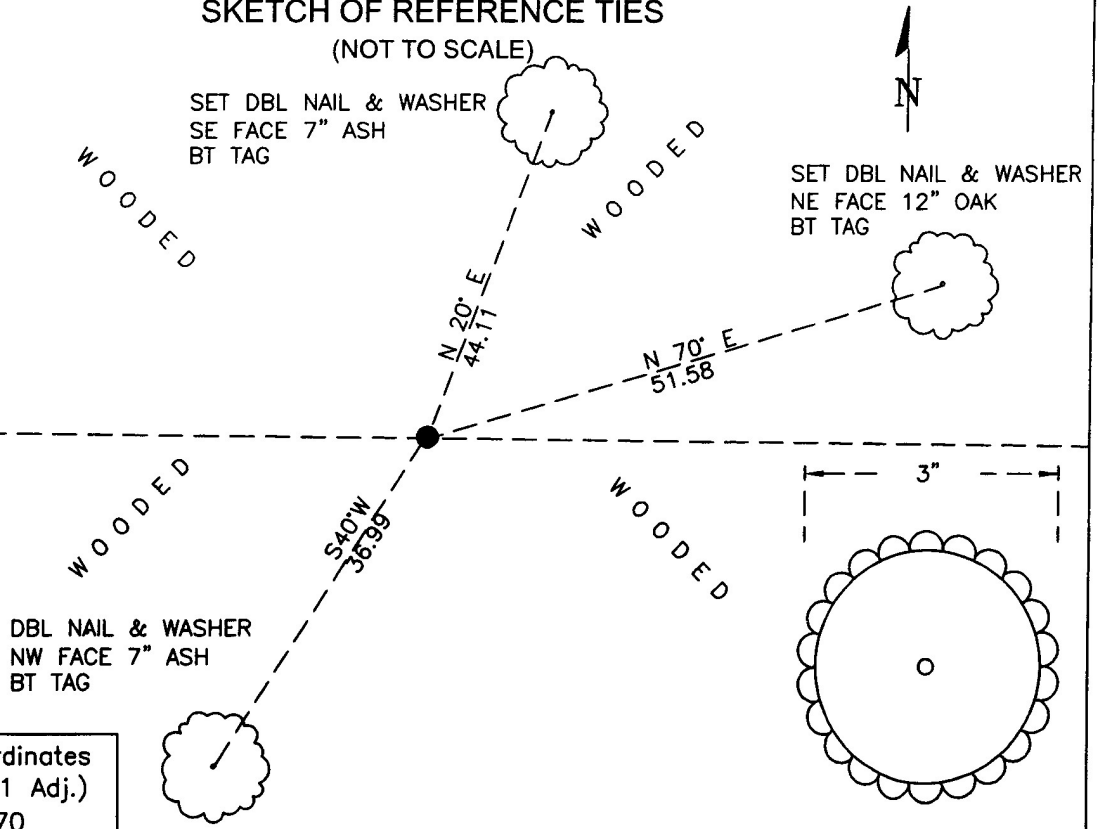
CERTIFICATE OF LOCATION OF GOVERNMENT CORNER

North 1/4 Corner of Section 27, Township 141 N, Range 25, W P.M. 5th
County of Cass, State of Minnesota

At the corner location shown on the sketch:

- On _____ found _____
- left monument as found lowered monument removed monument (explain)
- On May 5, 2022 set 2" diameter x 32" long 1/2" diameter aluminum pipe
with a 1-1/2" scalloped cap

SKETCH OF REFERENCE TIES (NOT TO SCALE)



Cass County Coordinates
(North Zone, 2011 Adj.)
N: 173847.270
E: 596934.498

Cap Detail



Index No. R.0-15.0

Statement of Evidence

North Quarter Corner of Section 27, Township 141 North, Range 25 West, 5th Principal Meridian.

March 1871 A GLO crew under W. Allen and E. Putnam set a post 40.02 chains easterly of the northwest corner of Section 27.
16" W. Pine S 68° W 53 links (35.0 feet) 15" Aspen N 55° W 28 links (18.5 feet)
22" Spruce N 71° E 5 links (3.3 feet) 7" Spruce S 24° E 47 Links (31.0 feet)

April 2022 A Cass County crew conducted a thorough search for bearing trees and other evidence. The corner position was proportioned midway on line between the northwest and northeast corners of Section 27. (Proj. 2021-022)

The recovered and established references for the position are shown on the face of this document.

Analysis of the recovered record data, field evidence and survey measurements, indicates that the monument set by CCHD/SO is the "lost" position of this corner.

County Coordinates (Cass County North)

Northing 173847.270

Easting 596934.498

THIS DOCUMENT SUPERCEDES DOC. A000689784 WHICH HAD THE INCORRECT TOWNSHIP NUMBER ON PAGE 1.