



A000688433

OFFICE OF THE COUNTY RECORDER  
CASS COUNTY, MINNESOTA  
CERTIFIED, FILED, AND/OR  
RECORDED ON

9/29/2022 11:19:09 AM

AS DOC #: A000688433

PAGES: 2

REC FEES: 0.00

KATHRYN M. NORBY  
CASS COUNTY RECORDER

BY SF \_\_\_\_\_ Dep TX#: 184719

I hereby certify that this survey, plan, or report was prepared by me or under my direct supervision and that I am a duly Licensed Land Surveyor under the laws of the state of Minnesota.

*Daniel J. McAninch* 29 Sept 2022  
Daniel J. McAninch Date  
Cass County Surveyor  
MN. L.S. 25684

### CERTIFICATE OF LOCATION OF GOVERNMENT CORNER

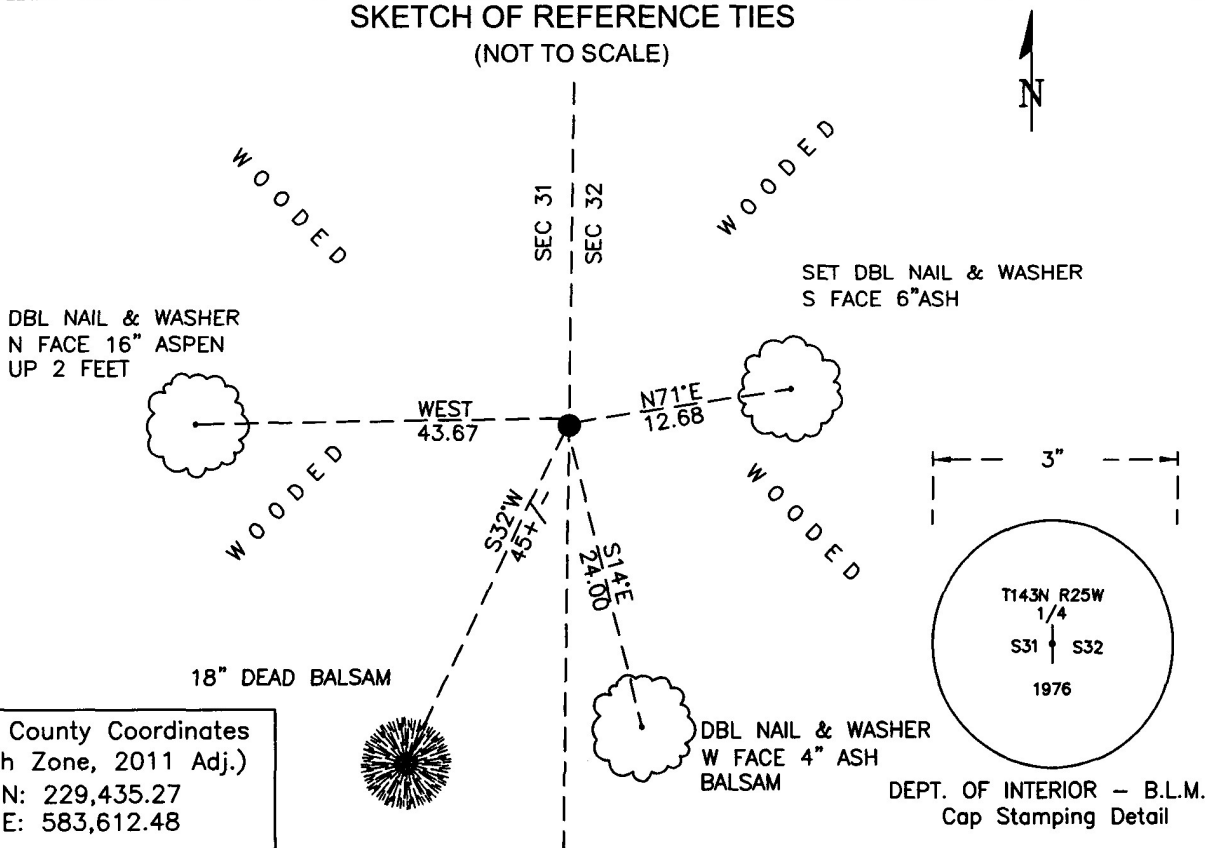
East 1/4 Corner of Section 31, Township 143 N, Range 25 W P.M. 5th  
County of Cass, State of Minnesota

At the corner location shown on the sketch:

- On Sept. 27, 2022 found 2 1/2" diameter aluminum pipe with a 3" BLM aluminum cap, up 1.2 feet
- left monument as found     lowered monument     removed monument (explain)

On \_\_\_\_\_ set \_\_\_\_\_

#### SKETCH OF REFERENCE TIES (NOT TO SCALE)



Cass County Coordinates  
(North Zone, 2011 Adj.)  
N: 229,435.27  
E: 583,612.48





**Index No. X.0-5.0**

Statement of Evidence

**East Quarter corner of Section 31, Township 143 North, Range 25 West, 5th Principal Meridian.**

July 1872 E.W. Griffin, General Land Office (GLO) Deputy Surveyor, in the notes of the subdivision Township 143 North, Range 25 West, set a post for the original corner and referenced it as follows:  
4" Cedar          S 63°W          12 links (7.9 feet)          4"Cedar          N 62° E          20 links (13.2 feet)

Sept. 1976 L.D. Gilbert, Supervisory Cadastral Surveyor, United States Department of the Interior Bureau of Land Management (BLM), Dependent Resurvey of the Subdivisional Lines Township 143 North, Range 25 West, page 28, on file with the Minnesota Historical Society in St. Paul, Minnesota, copies are filed with the CCHD/SO, at 39.82 chains(2628.1 feet), at proportionate distance, no evidence of the original corner, set aluminum post, 28 inches long, 2.5 inches diameter, with aluminum cap and witnessed as follows:  
6" Aspen          S 56° E          30.5 links(20.1 feet)          15" Aspen          N 32° W          67 links(44.2 feet)

Sept 2022 A Cass County Survey crew found the monument set by Gilbert's crew in 1976 but both bearing trees had been destroyed. The monument was located with GPS and ties taken as shown on the front of this document.

**Analysis of the recovered record data, field evidence and survey measurements, indicates that the monument set by the BLM in 1976 is the accepted location of this corner.**

**County Coordinates (Cass County North)**  
Northing 229,435.27  
Easting 583,612.48