



A000688041

OFFICE OF THE COUNTY RECORDER
CASS COUNTY, MINNESOTA
CERTIFIED, FILED, AND/OR
RECORDED ON

9/16/2022 10:19:19 AM

AS DOC #: A000688041

PAGES: 2

REC FEES: 0.00

KATHRYN M. NORBY
CASS COUNTY RECORDER

BY KF Dep TX#: 184388

Index No. Z-11

CERTIFICATE OF LOCATION OF GOVERNMENT CORNER

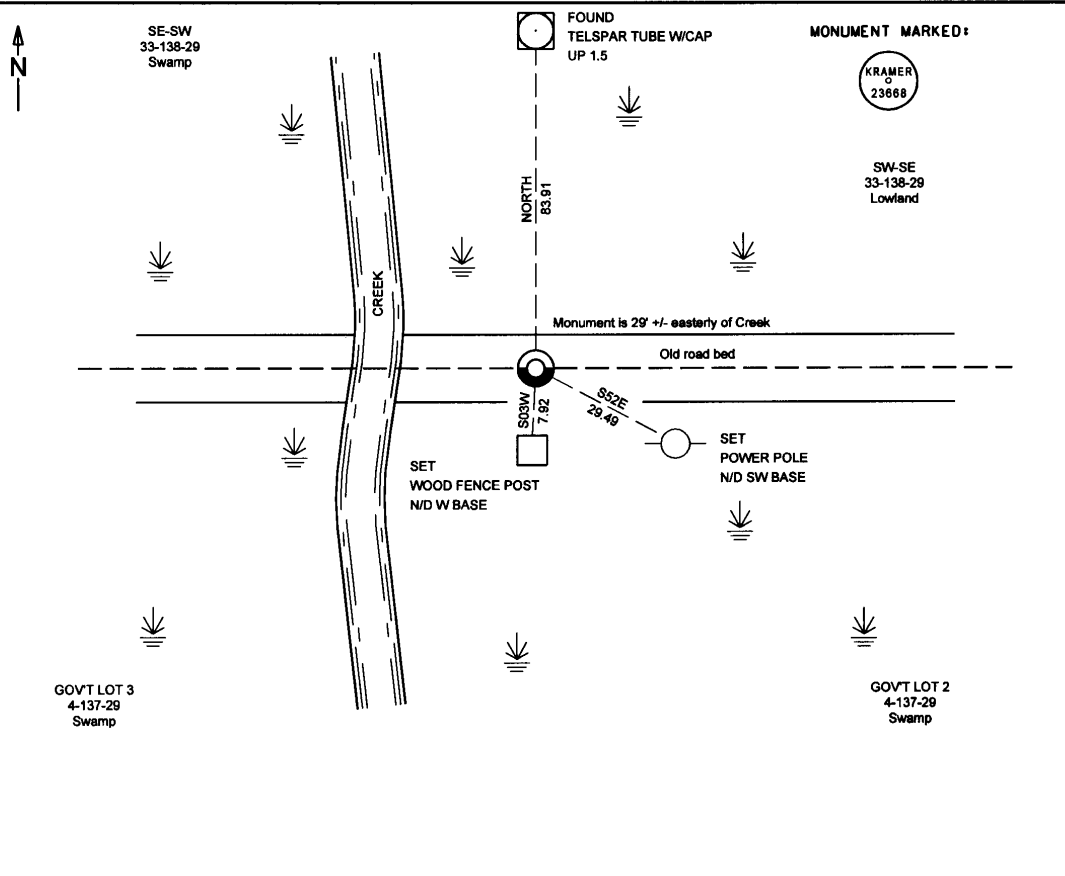
INDEX NO. Z-11, South Quarter CORNER OF SECTION 33, TOWNSHIP 138, RANGE 29,
STATE OF MINNESOTA, COUNTY OF CASS.

AT THE CORNER LOCATION SHOWN ON THE SKETCH:

ON 10-18-2021 FOUND A(N) Railroad Spike, down 0.3'

LEFT MONUMENT AS FOUND, LOWERED MONUMENT, REMOVED MONUMENT

ON 10-18-2021 PLACED A(N) 1/2"x30" Iron pipe with plastic cap stamped "KRAMER 23668", down 0.3'



I hereby certify that this survey, plan, or report was prepared by me or under my direct supervision, and that I am a duly Licensed Land Surveyor under the laws of the State of Minnesota. I further certify that this certificate of location of government corner is correct and complete to the best of my knowledge and belief.

Signature: James Kramer
James Kramer

Date: 09-13-2022

Reg. No. 23668

NAD 1983/1996 CASS COUNTY COORDINATES

N= 304947.505 E= 527703.109

Coordinates derived by RTK GPS (survey grade)

SKETCH OF REFERENCE TIES
(not to scale - bearings are magnetic)
Ties are measured to center of monument unless otherwise noted

UNITS = Metric English

1133 Industrial Park Road SW
Brainerd, MN 56401
218-829-6333

KRAMER LEAS DELO
SURVEYING - ENGINEERING - PLANNING
BRainerd ST. CLOUD

STATEMENT OF EVIDENCE RELATIVE TO THIS CORNER LOCATION IS ON THE BACK OF THE PAGE

STATEMENT OF EVIDENCE:

SOUTH QUARTER CORNER OF SECTION 33,
TOWNSHIP 138 NORTH, RANGE 29 WEST, C
CASS COUNTY, MINNESOTA

1865 The original public land survey was completed and a wood post was set to mark the corner along with the following bearing ties. Information on file in the MN historical Society, St. Paul MN. Copies on file in the Cass County Highway Department/Surveyors Office (CCHD/SO).

5" Black Pine N10E 190 links (125.40)
4" Aspen S40E 133 links (87.78)

Thomas Walker & George Wright
US Deputy Surveyor

1908 John Curo set the corner from old Government bearing ties.

(1865) 5" Black Pine N10E 190 links (125.40)
(1985) 4" Aspen S40E 133 links (87.78)

County Survey Record Book A
Pages 318-328

1908 Township road order filed by John Curo indicates the corner location.

1912 John Curo recovered the original 1865 Government bearing ties. From which he set a 2 1/2" X 48" capped iron pipe in concrete to mark the corner location. The following bearing ties were recovered.

(1865) 5" Black Pine N10E 190 links (125.40)
(1985) 4" Aspen S40E 133 links (87.78)

The following bearing ties were set.

Telephone Pole Northwest 26.80
4" Willow Northeast 58.50

Microfilm-roll 115
Book 85, Page 213

1992 (January) David Landecker set a 2" square county tubular monument with stamped aluminum cap up 0.5 to mark the corner. Certificate of Survey filed with Cass County by David Landecker shows a recovered railroad spike 83.69 feet South of the Section line and 4.34 feet East of the Southerly extension of the North-South Quarter line. The following bearing ties were set.

4" Burr Oak N34W 22.86
8" Burr Oak N07W 63.45
5" Red Oak N64E 33.62

Cass County Certificate Doc. #335054

2021 Crews at Kramer Leas Deleo recovered the monument set in 1992, and the railroad spike that was previously recovered in 1992. The railroad spike falls in an old E-W road bed, a 1939 aerial photo clearly shows this road bed running along the south line of Section 33. The recovered railroad spike is considered the best available evidence of the perpetuation of the corner location. An iron pipe with plastic cap stamped 'KRAMER 23668" was set in place of the recovered railroad spike. The following bearing ties were set.

Power Pole S52E 29.49
Wood Fence Post S03W 7.92
Telspar tube with Cap North 83.91

For additional information contact:
Kramer Leas Deleo PC
1120 Industrial Park Road Southwest
Brainerd, MN. 56401
218-829-5333