



A000687563

**OFFICE OF THE COUNTY RECORDER
CASS COUNTY, MINNESOTA
CERTIFIED, FILED, AND/OR
RECORDED ON**

9/1/2022 10:06:08 AM

AS DOC #: A000687563


PAGES: 2

REC FEES: 0.00

**KATHRYN M. NORBY
CASS COUNTY RECORDER**

BY NG Dep TX#: 184029

I HEREBY CERTIFY THAT THIS DOCUMENT AND THE DATA CONTAINED HEREIN WAS PREPARED BY ME OR UNDER MY DIRECT SUPERVISION.


MICHAEL A. STANG 9/5/2022
DATE

CICENSE NO. 52591

- LAND SURVEYOR PROFESSIONAL ENGINEER
- COUNTY SURVEYOR COUNTY ENGINEER

NAD 1983 (2011) CASS COUNTY COORDINATE SYSTEM - SOUTH ZONE
360154.482 E= 651763.126 US SURVEY FT
(COORDINATES ARE SHOWN AS INFORMATION ONLY, SUBJECT TO VERIFICATION)

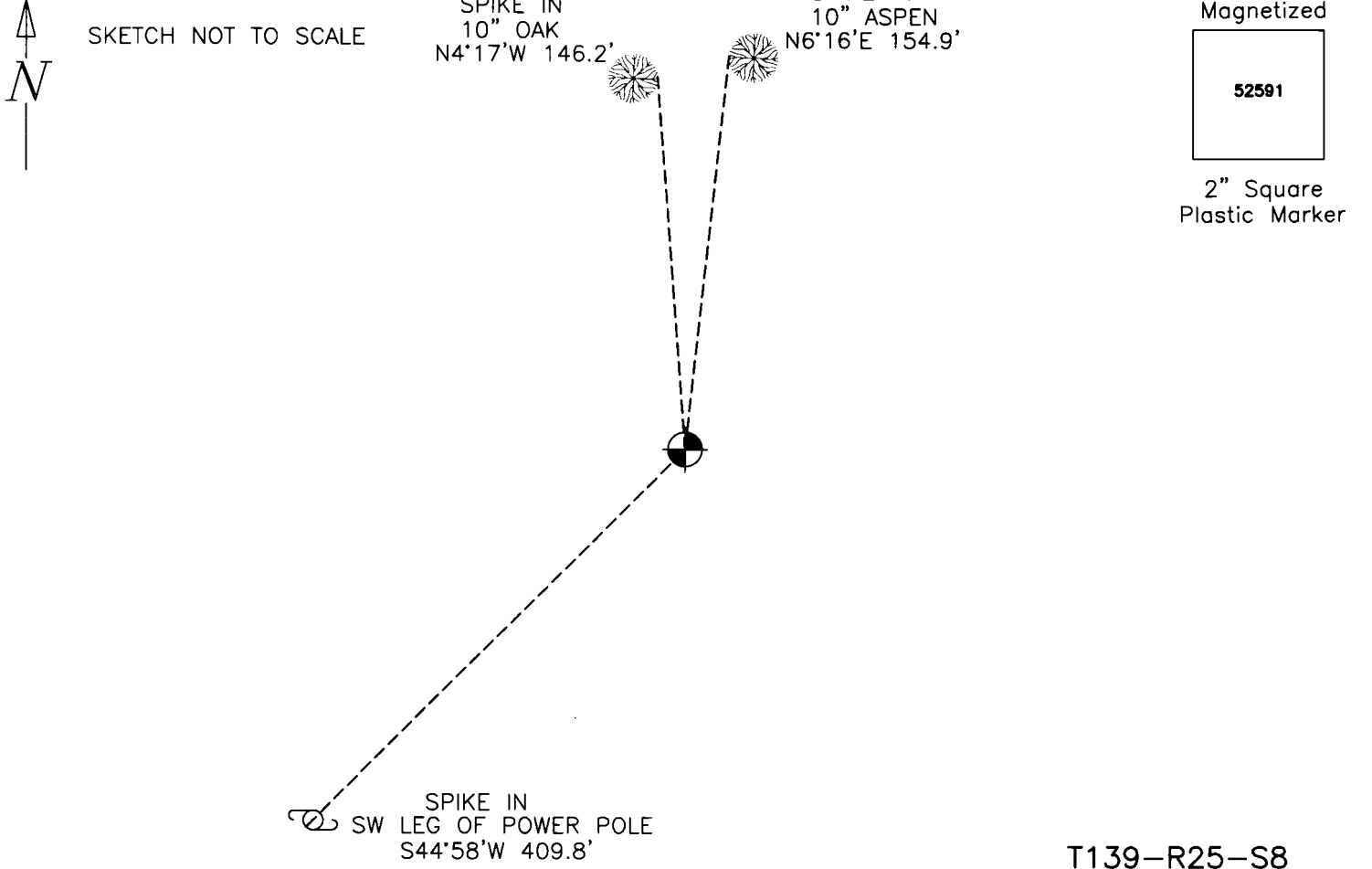
CERTIFICATE OF LOCATION OF GOVERNMENT CORNER

INDEX NO. G-9, EAST QUARTER CORNER OF SECTION 8, TOWNSHIP 139, RANGE 25, 5TH P.M.
STATE OF MINNESOTA, COUNTY OF CASS

AT THE CORNER LOCATION SHOWN ON THE SKETCH:

- ON 07/22/2022 FOUND A(N) NOTHING
DATE
- LEFT MONUMENT AS FOUND, LOWERED MONUMENT, REMOVED MONUMENT (EXPLAIN)
- ON 07/22/2022 PLACED A(N) 2 INCH SQUARE PLASTIC MONUMENT MARKED "52591"
DATE

SKETCH OF REFERENCE TIES



T139-R25-S8

STATEMENT OF EVIDENCE RELATIVE TO THIS CORNER LOCATION IS ON BACK OF PAGE



**EAST QUARTER CORNER OF SECTION 8 TOWNSHIP 139 NORTH,
RANGE 25 WEST OF THE 5TH PRINCIPAL MERIDIAN**

In 1863 the US General Land Office, notes of the subdivision of Township 139 North, Range 25 West, set a post for the original corner and referenced it as follows:

7" W. Birch S60E 31 Links 6" W. Birch S38W 32 Links

Said records are on file with the Minnesota Historical Society, St. Paul, Minnesota, copies are filed with the Cass County Surveyor's Office.

In 2013 KLJ field crews search the area and find no evidence of the corner or accessories. This corner was set lost by proportioning between the NE 8 and the NE 17. A 5/8" x 24" rebar with plastic cap stamped "Leas MN 42619" was set to mark the corner position and is witnessed with the following ties:

6" W. Oak N23W 9.57 feet 16" W. Oak S75W 35.85 feet
9" W. Oak S49W 25.18 feet NE corner Section 17 S 0d 41'12" E
2631.80 feet

In July 2022, Northwestern Surveying and Engineering, Inc., a private Land Surveying and Engineering firm, was conducting cadastral surveying in this area. After research and review of historic documents and records a survey crew searched for evidence of this position. No evidence of the corner or its accessories (other than the adjacent section corner) were found.

On 07/22/2022 a Northwestern Surveying and Engineering crew set a 2" square plastic monument marked #52591 using obliterated methods by reestablishing the corner from the NE corner of Section 17 as shown on the COL produced by KLJ in 2013.