



A000687562

OFFICE OF THE COUNTY RECORDER  
CASS COUNTY, MINNESOTA  
CERTIFIED, FILED, AND/OR  
RECORDED ON

9/1/2022 10:06:07 AM

AS DOC #: A000687562

PAGES: 2

REC FEES: 0.00

KATHRYN M. NORBY  
CASS COUNTY RECORDER

BY NG Dep TX#: 184029

I HEREBY CERTIFY THAT THIS DOCUMENT AND THE DATA  
CONTAINED HEREIN WAS PREPARED BY ME OR UNDER  
MY DIRECT SUPERVISION.

  
MICHAEL A. STANG

8/23/2022  
DATE

LICENSE NO. 52591

- LAND SURVEYOR
- PROFESSIONAL ENGINEER
- COUNTY SURVEYOR
- COUNTY ENGINEER

NAD 1983 (2011) CASS COUNTY SOUTH COORDINATES  
N= 349667.795 E= 578224.494 US SURVEY FT  
(COORDINATES ARE SHOWN AS INFORMATION ONLY, SUBJECT TO VERIFICATION)

### CERTIFICATE OF LOCATION OF GOVERNMENT CORNER

INDEX NO. P-1, WEST QUARTER CORNER OF SECTION 19, TOWNSHIP 139, RANGE 27, 5TH P.M.  
STATE OF MINNESOTA, COUNTY OF CASS

AT THE CORNER LOCATION SHOWN ON THE SKETCH:

- ON 08/16/2022 FOUND A(N) NOTHING
- LEFT MONUMENT AS FOUND,  LOWERED MONUMENT,  REMOVED MONUMENT (EXPLAIN)
- ON 08/16/2022 PLACED A(N) 1/2 INCH REBAR WITH ORANGE PLASTIC CAP STAMPED "STANG RLS 52591"

### SKETCH OF REFERENCE TIES

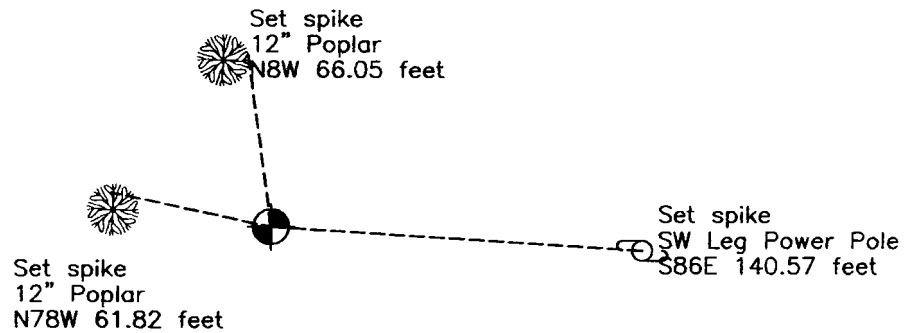
MONUMENT MARKED:



SKETCH NOT TO SCALE



Iron w/cap



T139-R27-S19

STATEMENT OF EVIDENCE RELATIVE TO THIS CORNER LOCATION IS ON BACK OF PAGE

Page 1 of 2 A000687562



**WEST QUARTER CORNER OF SECTION 19 TOWNSHIP 139 NORTH,  
RANGE 27 WEST OF THE 5<sup>TH</sup> PRINCIPAL MERIDIAN**

In 1863 the US General Land Office, in notes of running the east line of Township 139 North, Range 28 West, set a post for the original corner and referenced it as follows:

7" Aspen S80E 13 links 8" Aspen N75W 20 links

Said records are on file with the Minnesota Historical Society, St. Paul, Minnesota, copies are filed with the Cass County Surveyor's Office (CCSO).

In 1919 B. Clark, LS 231, Survey Record Number 434, Book C, page 307, on file in the CCSO, indicates an Aspen post 3' x 3" square was set. Page 312 indicates an iron post was set, stating, "Then set ½ S. bet. 19-24 on range line an iron post 4 ft. long 2 in. diam. Marked the same ¼ S. and made following witness tree:"

Pine stump S4d15'W 30 feet

In 1922 B. Clark, LS 231, County Resurvey, on file in the Cass County Recorder's Office, document number 69795, indicates Iron Monument.

In 1937 CCC Washburn Lake field book no. 1, page 6, on file at the DNR office in Brainerd shows CCC personnel found a 3" square stake 1.02 chains west of random line.

In 2013 KLJ field crews searched the area and found nothing. This corner was set lost by single proportion between the Northeast corner of Section 24 and the Northeast corner of Section 25. A 5/8" x 24" rebar with plastic cap stamped "Leas MN 42619" was set to mark the corner position and is witnessed with the ties shown on the front of the certificate

In November 2013, A survey crew from Northwestern Surveying and Engineering found the 1919 B. Clark 2 ½" capped pipe at the Northeast Corner of Section 24, T139N, R28W.

In November 2013, KLJ used the position of the Clark pipe at the Northeast Corner of Section 24, T139N, R28W, to compute a lost position for this corner. KLJ field crews then performed another search of this area for evidence of the corner and found nothing.

In August 2022, a survey crew from Northwestern Surveying and Engineering made a visit to this corner. The crew searched the area for the corner and its ties and found nothing. The corner was placed at the lost position as previously established by KLJ in 2013 at midpoint between the found 1919 B. Clark pipe and the Northeast Corner of Section 25. New ties were established as shown on the front of this document.