



A000687371

OFFICE OF THE COUNTY RECORDER  
CASS COUNTY, MINNESOTA  
CERTIFIED, FILED, AND/OR  
RECORDED ON

8/25/2022 11:01:44 AM

AS DOC #: A000687371

PAGES: 2

REC FEES: 0.00

KATHRYN M. NORBY  
CASS COUNTY RECORDER

BY SF \_\_\_\_\_ Dep TX#: 183873

I hereby certify that this survey, plan, or report was prepared by me or under my direct supervision and that I am a duly Licensed Land Surveyor under the laws of the state of Minnesota.

*Daniel J. McAninch* 25 August 2022  
Daniel J. McAninch Date  
MN LIC.# 25684

Page 1 of 2 A000687371

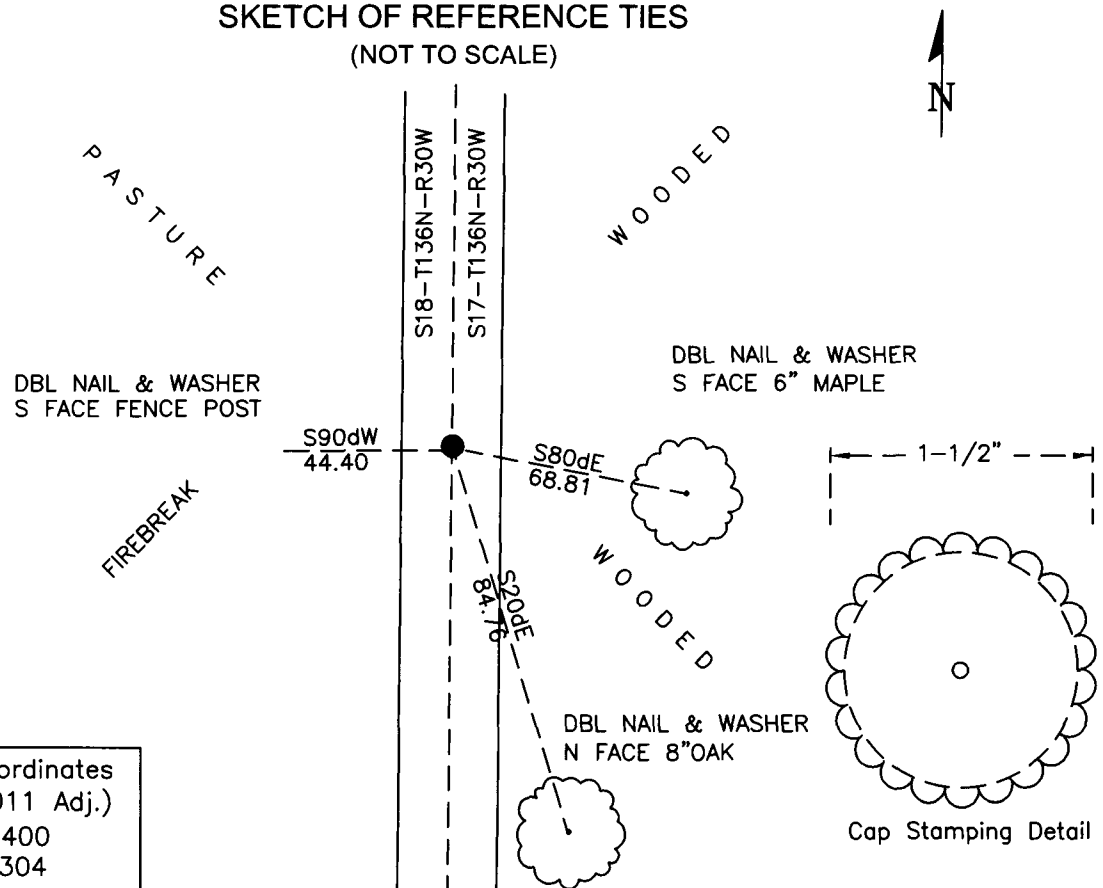
### CERTIFICATE OF LOCATION OF GOVERNMENT CORNER

East 1/4 Corner of Section 18, Township 136 N, Range 28 W, 5th P.M.  
County of Cass, State of Minnesota

At the corner location shown on the sketch:

- On \_\_\_\_\_ found \_\_\_\_\_
- left monument as found     lowered monument     removed monument (explain)
- On June 2, 2022 set 1" diameter aluminum pipe with a 1-1/2' dia cap on a west running fence line on the monumented section line

### SKETCH OF REFERENCE TIES (NOT TO SCALE)



Cass County Coordinates  
(South Zone, 2011 Adj.)  
N: 259,548.400  
E: 492,138.304

**STATEMENT OF EVIDENCE:**

EAST QUARTER CORNER OF SECTION 18,  
TOWNSHIP 136 NORTH, RANGE 30 WEST,  
MAPLE TWP., CASS COUNTY, MINNESOTA

- 1870** The original public land survey was complete and a wood post was set to mark the corner. The bearing ties were marked and measured to.
- |                |       |                 |
|----------------|-------|-----------------|
| 8" White Birch | S30dW | 13 links (8.6') |
| 7" Aspen       | N27dE | 7 links (4.6')  |
- 1893** A road survey map prepared by James Garfield indicates the easterly line of Section 18 was surveyed for the route. The map shows a 35 minute deflection at the East Quarter Corner of Section 18.
- 2022** A Cass County survey crew conducted a thorough search in the vicinity of this corner. A magnetized aluminum monument with a 1-1/2" cap was set at the easterly extension of a fenceline that runs along the East West quarter line and on line between the northeast and northwest corners of Section 18. This position is approximately 16 feet southerly of the midpoint between corners.

(County Project 2021-002) (Cass County Survey #9681)

**CASS COUNTY COORDINATES (NAD 83 2011 ADJUSTMENT)**

**N-259,548.400**

**E-492,138.304**

General Land Office Information on file in the MN historical Society, St. Paul MN. Copies on file in the Cass County Highway Department/Surveyors Office (CCHD/SO).

For additional information contact:  
**Cass County Highway Department**  
**County Surveyor's Office**  
8045 County Road 12  
Walker, MN 56484  
218-547-1211