



A000683300

OFFICE OF THE COUNTY RECORDER
CASS COUNTY, MINNESOTA
CERTIFIED, FILED, AND/OR
RECORDED ON

4/12/2022 12:16:48 PM

AS DOC #: A000683300

PAGES: 2

REC FEES: 0.00

KATHRYN M. NORBY
CASS COUNTY RECORDER

BY KF Dep TX#: 180547

Page 1 of 2 A000683300

Index No. R-17

CERTIFICATE OF LOCATION OF GOVERNMENT CORNER

NORTHEAST Corner of Section 27, Township 145N, Range 27W

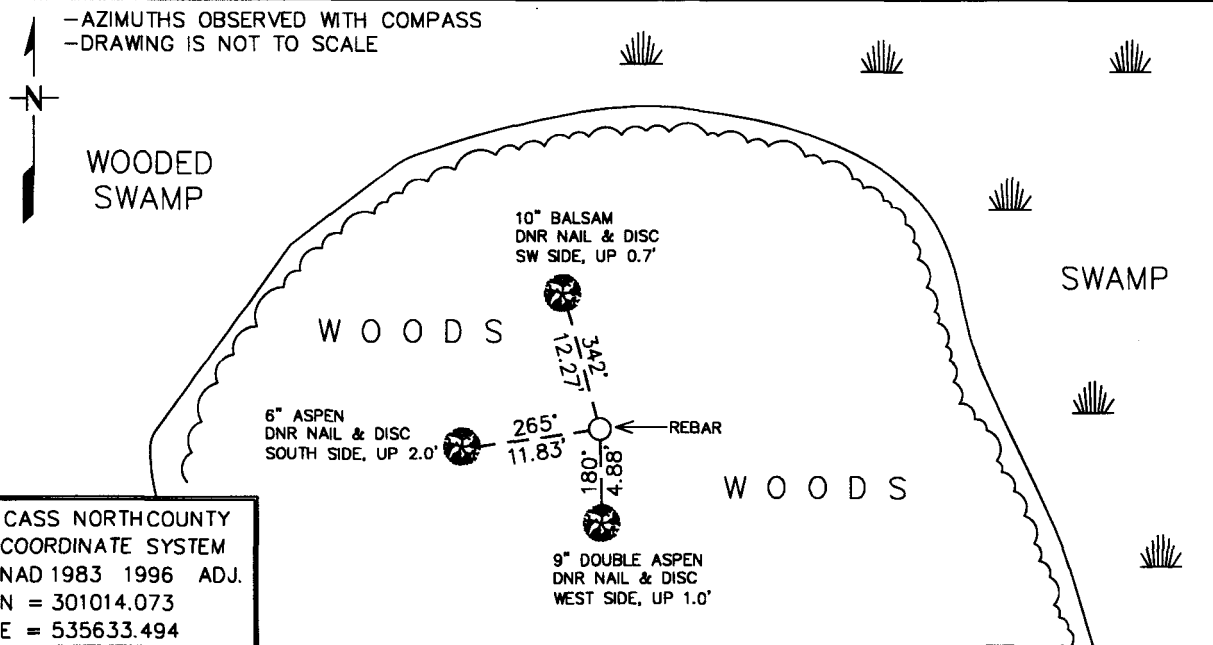
5th Principal Meridian, State of Minnesota, County of CASS

At the corner location shown on the sketch:

■ On 3/4/2021 found a NO ORIGINAL EVIDENCE
DATE

left monument as found, lowered monument, removed monument (explain)

■ On 12/21/2021 Placed a 3/4" REBAR WELDED TO A 5.0' STEEL POST WITH CAP
DATE
STAMPED "MN DNR LS 48249". UP 1.0'. ON AN ISLAND OF HIGH GROUND.



CASS NORTH COUNTY
COORDINATE SYSTEM
NAD 1983 1996 ADJ.
N = 301014.073
E = 535633.494

Statement of evidence for this corner location is on back of this page.

AMD 2/2/2022
GNA00002.00.00.01

I hereby certify that this plan, specification, or report was prepared by me or under my direct supervision and that I am a duly Licensed Land Surveyor under the laws of the State of Minnesota.

SIGNATURE Daniel A. Drusch DATE 3-31-2022 License Number 48249
DANIEL A. DRUSCH

Title: Land Surveyor Professional Engineer County Surveyor County Engineer



Northeast Corner Section 27, Township 145 North, Range 27 West, 5th P.M.

The DNR Land Survey Unit contacted the following offices for survey information on this corner:

- Bureau of Land Management (BLM)
- MN Secretary of State
- Cass County Recorder, Auditor, Surveyor, and Highway Engineer
- U.S. Forest Service
- Itasca County Surveyor

1873 The U.S. General Land Office (GLO) survey notes and plat, on file in the MN Secretary of State's Office, describe this corner as a post set in edge of swamp, from which:

- 10" Tam, N 16° E, 12 links
- 5" Tam, S 16° E, 15 links
- 4" Poplar, S 63° W, 24 links
- 10" Poplar, N 52° W, 32 links

1914 Asst. Forest Ranger M. J. Cummings set a new corner from a Tam. Stub NE and a Poplar Stub SW.

1934 CCC Party Chief Earl Handy found a square wood post rotted off at ground.

1934 CCC Party Chief Earl Handy found the N16 NE4 S27, Quarter mile West of this corner. He found rotted post, with a White pine 10", S52W 8 lks. and a Norway Pine 6", N52E, 10 lks.

19?? USFS corner card (Form 874-9): White pine 12", 14.5', no direction observed.

2021 March, the DNR Land Survey Unit conducted a search for the corner but did not find any original evidence. The Survey unit did however, find the **1934 tie tree** at the vicinity of the 1/16th corner, ¼ mile west of this section corner vicinity: White Pine at S52W, 8 lks and the White Pine Northeast tie tree (from unknown year) at 14.5' distance. Distances were pulled from each bearing tree to an intersection point and then excavation for corner evidence commenced. The wood post was found at the intersection point and a GPS position was observed at the found post. As a result, the Northeast corner of section 27 was computed using the record USFS mile distance along the north line of section 27 (i.e. 81.31 chains), while projecting a line from the Northeast corner of section 28 through the found 1/16th corner for a north-south position. This computed position was found to measure:

- 1321.591 feet (USFS = 1320 ft) from the North 1/16th of the NE ¼ of Section 27.
- 5366.46 feet (USFS = 5366.46 ft) from the Northeast corner Section 28
- 5271.598 feet (GLO = 5280 ft) from the Northeast corner Section 22.
- 2622.902 feet (GLO = 2640 ft) from the East Quarter corner Section 27.

Analysis of the available information led me to accept the computed position for the corner. A combination of 1/16th corner evidence and other record dimensions resulted in a solid corner position that agrees well with record dimensions to adjoining corners.