



A000683294

OFFICE OF THE COUNTY RECORDER
CASS COUNTY, MINNESOTA
CERTIFIED, FILED, AND/OR
RECORDED ON

4/12/2022 12:16:42 PM

AS DOC #: A000683294

PAGES: 2

REC FEES: 0.00

KATHRYN M. NORBY
CASS COUNTY RECORDER

BY KF Dep TX#: 180547

Page 1 of 2 A000683294

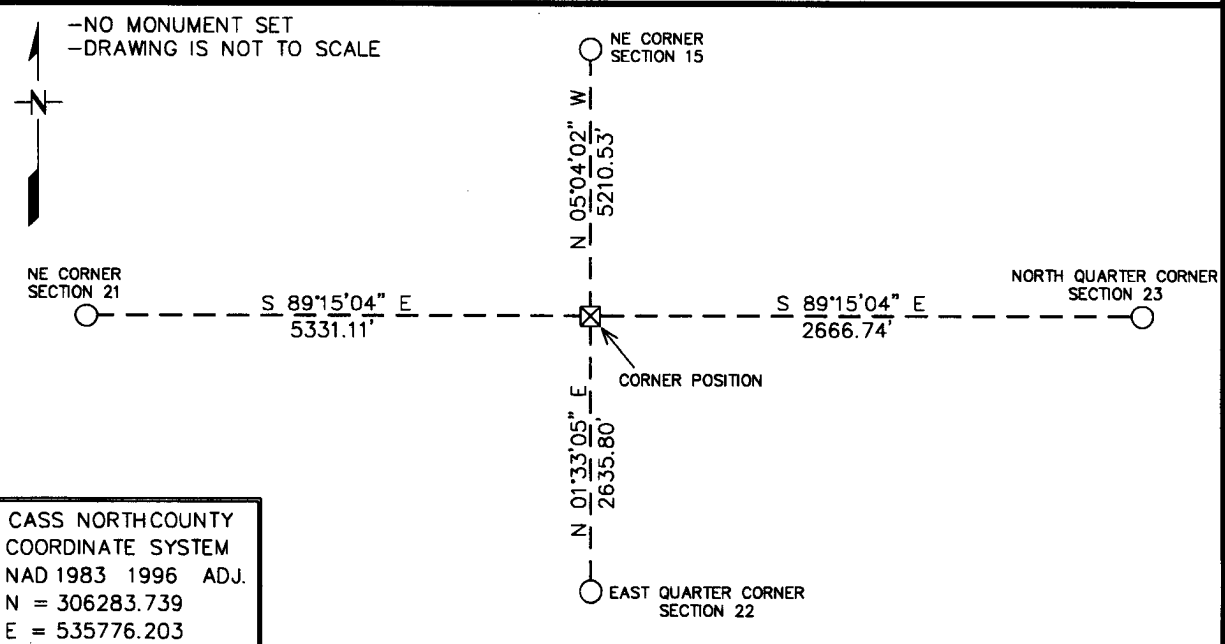
Index No. N-17

CERTIFICATE OF LOCATION OF GOVERNMENT CORNER

NORTHEAST Corner of Section 22, Township 145N, Range 27W
5th Principal Meridian, State of Minnesota, County of CASS

At the corner location shown on the sketch:

- On _____ found a _____
DATE
- left monument as found, lowered monument, removed monument (explain)
- On 1/12/2022 Placed a NO MONUMENT SET; UNABLE TO REACH LOCATION DUE TO
DATE
THE CONDITIONS AT THE TIME OF SURVEY.



CASS NORTH COUNTY
COORDINATE SYSTEM
NAD 1983 1996 ADJ.
N = 306283.739
E = 535776.203

Statement of evidence for this corner location is on back of this page.

AMD 2/2/2022
GNA00002.00.00.01

I hereby certify that this plan, specification, or report was prepared by me or under my direct supervision and that I am a duly Licensed Land Surveyor under the laws of the State of Minnesota.

SIGNATURE Daniel A. Drusch DATE 3-31-2022 License Number 48249
DANIEL A. DRUSCH

Title: Land Surveyor Professional Engineer County Surveyor County Engineer

**Northeast Corner Section 22, Township 145 North, Range 27 West, 5th P.M.**

The DNR Land Survey Unit contacted the following offices for survey information on this corner:

Bureau of Land Management (BLM)
MN Secretary of State
Cass County Recorder, Auditor, Surveyor, and Highway Engineer
U.S. Forest Service
Itasca County Surveyor

1873 The U.S. General Land Office (GLO) survey notes and plat, on file in the MN Secretary of State's Office, describe this corner as a post set, from which:

4" Tam, S 85° E, 75 links

4" Tam, N 70° E, 60 links

6" Tam, S 14° W, 90 links

2021 March, the DNR Land Survey Unit conducted a search for the corner but did not find any original evidence. After long, detailed analysis of the situation, it was decided to compute this corner position by doubling over the distance from the Northeast corner of Section 23 to the North Quarter corner of Section 23, while holding a line (i.e. north-south position) from the North Quarter corner of Section 23 to the Northeast corner of Section 21. This computed position was found to measure:

5331.11 feet (GLO = 5287.92 ft) from the Northeast corner section 21.

2666.739 feet (GLO = 2645.94 ft) from the North Quarter corner section 23.

5271.60 feet (GLO = 5280 ft) from the Northeast corner Section 27.

Analysis of the available information led me to accept the computed position as the corner. Although not a standard survey method of corner determination, I felt it was utilizing the best available adjoining corner data, rather than defaulting to last resort methods of computing "lost".