



A000683289

OFFICE OF THE COUNTY RECORDER  
 CASS COUNTY, MINNESOTA  
 CERTIFIED, FILED, AND/OR  
 RECORDED ON

4/12/2022 12:16:37 PM

AS DOC #: A000683289

PAGES: 2

REC FEES: 0.00

KATHRYN M. NORBY  
 CASS COUNTY RECORDER

BY KF Dep TX#: 180547

Index No. L-5

**CERTIFICATE OF LOCATION OF GOVERNMENT CORNER**

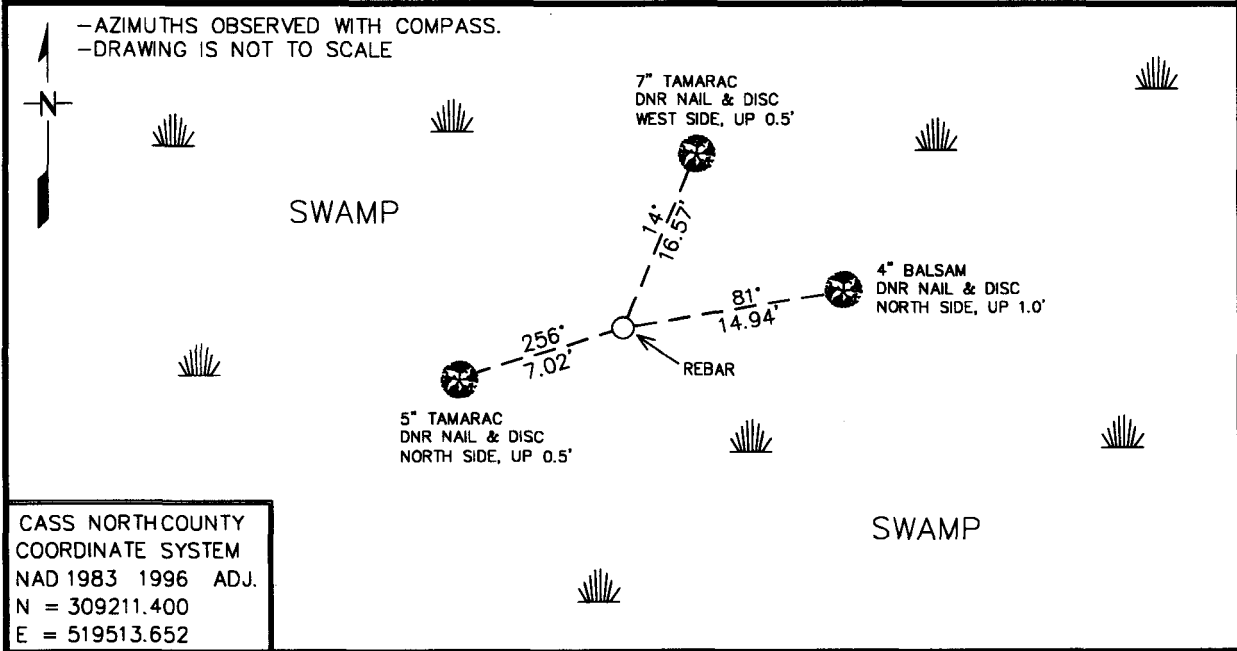
EAST QUARTER Corner of Section 18, Township 145N, Range 27W  
5th Principal Meridian, State of Minnesota, County of CASS

At the corner location shown on the sketch:

■ On 3/3/2021 found a NO ORIGINAL EVIDENCE  
DATE

left monument as found,  lowered monument,  removed monument (explain)

■ On 12/21/2021 Placed a 3/4" REBAR WELDED TO A 5.5' STEEL POST WITH CAP  
DATE  
STAMPED "MN DNR LS 48249", UP 1.0', IN SWAMP.



Statement of evidence for this corner location is on back of this page.

AMD 2/2/2022  
 GNA00002.00.00.01

I hereby certify that this plan, specification, or report was prepared by me or under my direct supervision and that I am a duly Licensed Land Surveyor under the laws of the State of Minnesota.

SIGNATURE Daniel A. Drusch DATE 3-31-2022 License Number 48249  
 DANIEL A. DRUSCH

Title:  Land Surveyor  Professional Engineer  County Surveyor  County Engineer

**East Quarter Corner Section 18, Township 145 North, Range 27 West, 5<sup>th</sup> P.M.**

The DNR Land Survey Unit contacted the following offices for survey information on this corner:

Bureau of Land Management (BLM)  
MN Secretary of State  
Cass County Recorder, Auditor, Surveyor, and Highway Engineer  
U.S. Forest Service  
Itasca County Surveyor

1873 The U.S. General Land Office (GLO) survey notes and plat, on file in the MN Secretary of State's Office, describe this corner as a set post, from which:

Tamarack 4" diam bears S 19° E, 67 links  
Tamarack 3" diam bears N 11° W, 33 links

2021 March, the DNR Land Survey Unit conducted a search for the corner but did not find any original evidence. As a result, this corner position was computed by Single Proportionate Measurement between the Northeast corner of Section 18 and the Northeast corner of Section 19. This computed position was found to measure:

2661.846 feet (GLO = 2640 ft) from adjoining corners.

Analysis of the available information led me to accept the computed position as the corner. Lack of government perpetuation bears out the need for the lost position.