



A000676172

OFFICE OF THE COUNTY RECORDER
CASS COUNTY, MINNESOTA
CERTIFIED, FILED, AND/OR
RECORDED ON

8/27/2021 11:46:59 AM

AS DOC #: A000676172

PAGES: 2

REC FEES: 0.00

KATHRYN M. NORBY
CASS COUNTY RECORDER

BY KF Dep TX#: 174777

I HEREBY CERTIFY THAT THIS DOCUMENT AND THE DATA
CONTAINED HEREIN WAS PREPARED BY ME OR UNDER
MY DIRECT SUPERVISION.

Guy T. Carlson 8/20/2021
GUY T. CARLSON DATE

LICENSE NO. 40991

- LAND SURVEYOR PROFESSIONAL ENGINEER
- COUNTY SURVEYOR COUNTY ENGINEER

NAD 1983 (1996 HARN) CASS COUNTY NORTH ZONE COORDINATES
N= 284459.956 E= 588705.169 US SURVEY FT
(COORDINATES ARE SHOWN AS INFORMATION ONLY, SUBJECT TO VERIFICATION)

CERTIFICATE OF LOCATION OF GOVERNMENT CORNER

INDEX NO. E-09, NORTHEAST CORNER OF SECTION 8, TOWNSHIP 144, RANGE 25, 5TH P.M.
STATE OF MINNESOTA, COUNTY OF CASS

AT THE CORNER LOCATION SHOWN ON THE SKETCH:

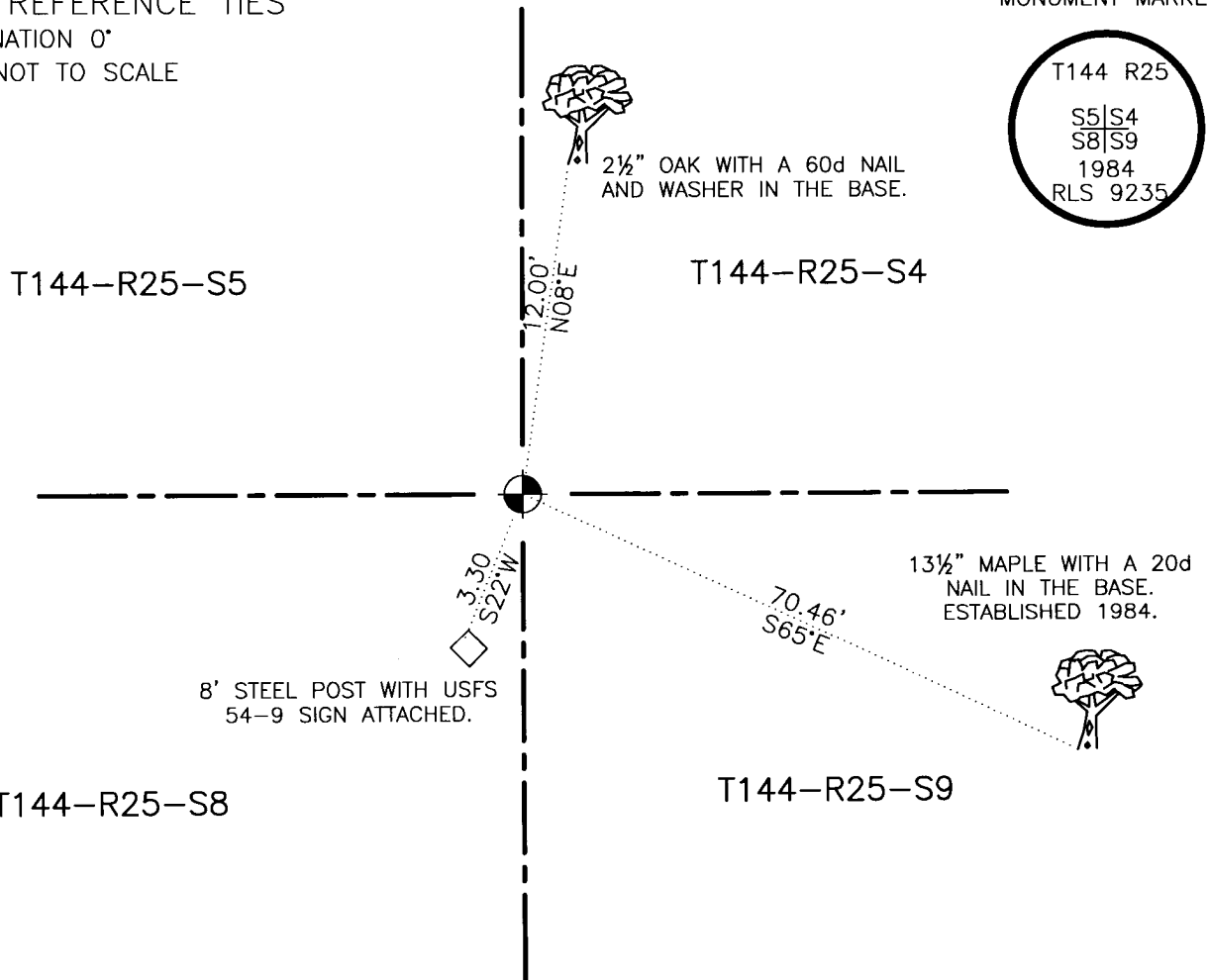
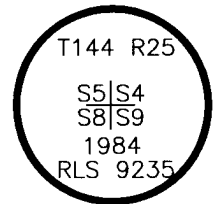
- ON 7/16/2021 FOUND A(N) UNITED STATES FOREST SERVICE, BRASS CAPPED PIPE MONUMENT.
DATE
- LEFT MONUMENT AS FOUND, LOWERED MONUMENT, REMOVED MONUMENT (EXPLAIN)
- ON _____ PLACED A(N) _____
DATE

SKETCH OF REFERENCE TIES

DECLINATION 0°
SKETCH NOT TO SCALE



MONUMENT MARKED:



STATEMENT OF EVIDENCE RELATIVE TO THIS CORNER LOCATION IS ON BACK OF PAGE



STATEMENT OF EVIDENCE: Northeast Corner of Section 8, Township 144 North, Range 25 West, of the 5th Principal Meridian.

1875; This corner was originally established by B.C. Baldwin, Deputy Surveyor under contract to the General Land Office (GLO), now the Bureau of Land Management (BLM). A copy of the plat of this township and hand copied field notes are on file in the Itasca County Surveyor's Office. These Field notes indicate a wood post was set to mark this corner position, which was witnessed by:

Jack Pine,	6",	South 83° West,	6 links,	3.96 feet;
Jack Pine,	7",	North 74° East,	6 links,	3.96 feet;
Jack Pine,	8",	South 35° East,	11 links,	7.26 feet;
Jack Pine,	8",	North 20° West,	13 links,	8.58 feet;

1900; (March) W.R. Caldwell of the United States Corps of Engineers (USACE) "found all trees standing with marks plain." He proceeded to tie this corner position into his stadia traverse. Field Book A1-226, page 38.

1984; (November) James Parker, LS 9235, of Advance Surveying performed a Dependent Resurvey of this Township. He failed to find any evidence of this corner position. He set a 2½" iron pipe with a stamped brass cap at an obliterated position using the USACE information. He filed a Certificate of Location of Government Corner with the Cass County Recorder. See Document #281670. This corner position was witnessed by:

Balsam,	6",	North 25° East,	8.01 feet;
Maple,	8",	South 65° East,	70.78 feet;
Birch,	10",	South 20° West,	22.41 feet;
Spruce,	6",	North 28° West,	40.28 feet;

2021; (July) Itasca County Department of Surveying and Mapping personnel T. Lasecki and W. Storm recovered the monument as set in 1984 up 13". Its position was verified by the recovered 1984 Maple witness tree. They note the other witnesses are either down or stumps. The monument was driven flush with the ground and geodetic coordinates were collected on the monument. Township 144-25 Township Field Book 1, page 36. The recovered and established witnesses are as shown on the face of this document.

