



A000676171

OFFICE OF THE COUNTY RECORDER
CASS COUNTY, MINNESOTA
CERTIFIED, FILED, AND/OR
RECORDED ON

8/27/2021 11:46:58 AM

AS DOC #: A000676171

PAGES: 2

REC FEES: 0.00

KATHRYN M. NORBY
CASS COUNTY RECORDER

BY KF Dep TX#: 174777

I HEREBY CERTIFY THAT THIS DOCUMENT AND THE DATA
CONTAINED HEREIN WAS PREPARED BY ME OR UNDER
MY DIRECT SUPERVISION.

Jay T. Carlson 8/20/2021
JAY T. CARLSON DATE

LICENSE NO. 40991

- LAND SURVEYOR PROFESSIONAL ENGINEER
- COUNTY SURVEYOR COUNTY ENGINEER

NAD 1983 (1996 HARN) CASS COUNTY NORTH ZONE COORDINATES
N= 281959.154 E= 593949.037 US SURVEY FT
(COORDINATES ARE SHOWN AS INFORMATION ONLY, SUBJECT TO VERIFICATION)

CERTIFICATE OF LOCATION OF GOVERNMENT CORNER

INDEX NO. G-13, EAST QUARTER CORNER OF SECTION 9, TOWNSHIP 144, RANGE 25, 5TH P.M.
STATE OF MINNESOTA, COUNTY OF CASS

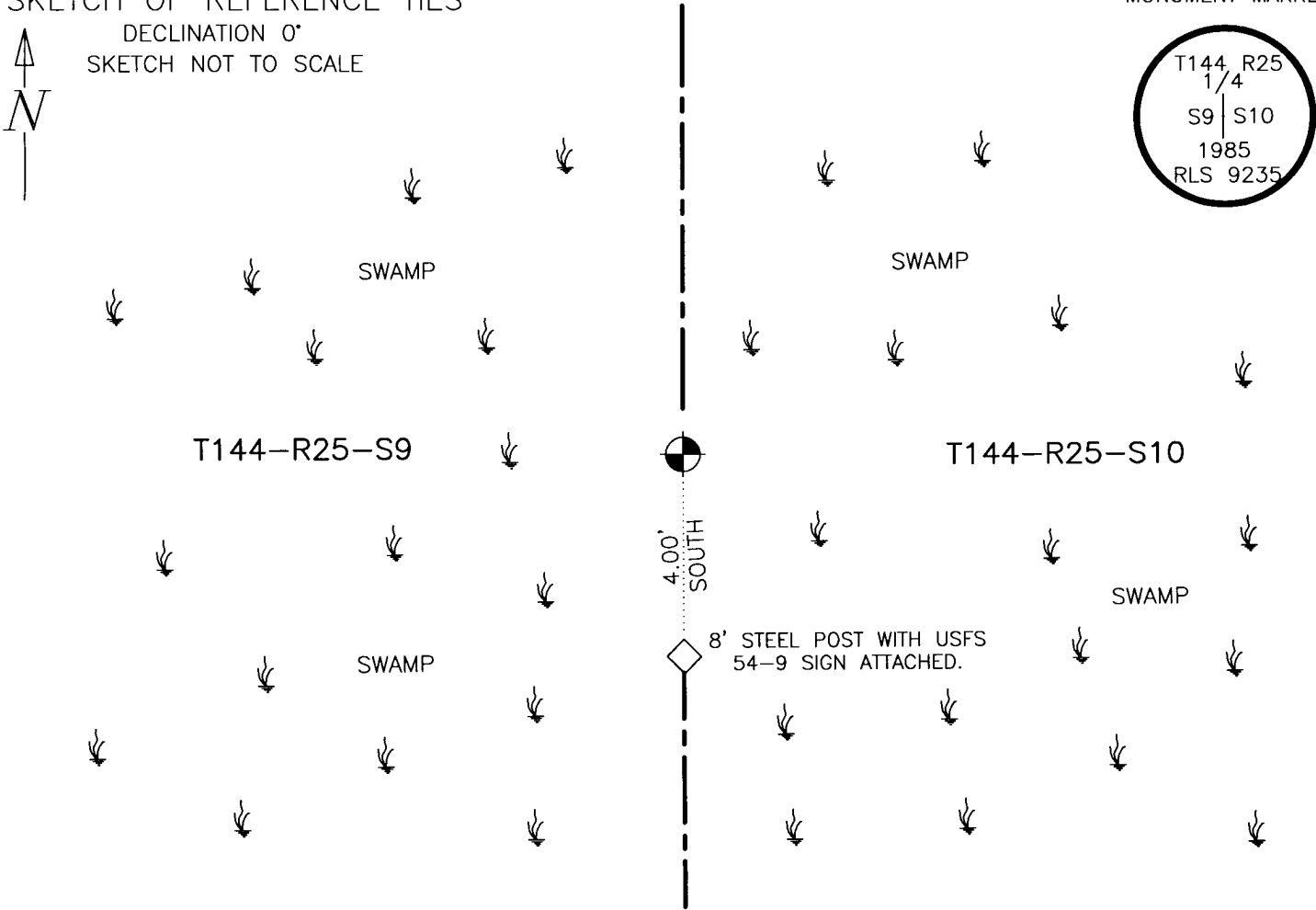
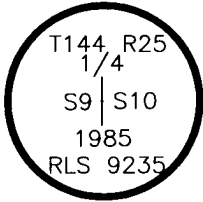
AT THE CORNER LOCATION SHOWN ON THE SKETCH:

- ON 7/12/2021 FOUND A(N) UNITED STATES FOREST SERVICE, ALUMINUM CAPPED, ALUMINUM ROD MONUMENT.
DATE
- LEFT MONUMENT AS FOUND, LOWERED MONUMENT, REMOVED MONUMENT (EXPLAIN)
- ON _____ DATE _____ PLACED A(N) _____

SKETCH OF REFERENCE TIES

DECLINATION 0°
SKETCH NOT TO SCALE
N

MONUMENT MARKED:



STATEMENT OF EVIDENCE RELATIVE TO THIS CORNER LOCATION IS ON BACK OF PAGE



STATEMENT OF EVIDENCE: Quarter Corner of Sections 9 and 10, Township 144 North,
Range 25 West, of the 5th Principal Meridian.

1876; This corner was originally established by B.C. Baldwin, Deputy Surveyor under contract to the General Land Office (GLO), now the Bureau of Land Management (BLM). A copy of the plat of this township and hand copied field notes are on file in the Itasca County Surveyor's Office. These Field notes indicate a wood post was set to mark this corner position. There were no trees available for use as witnesses.

1985; (January) James Parker, LS 9235, of Advance Surveying under a United States Forest Service contract, performed a Dependent Resurvey of this Township. He failed to find any evidence of this corner position. He set a 5/8" by 11' long aluminum rod with a 3" stamped aluminum cap at a proportioned position between the southeast and northeast corners of Section 9. He filed a Certificate of Location of Government Corner with the Cass County Recorder. See Document #281675. This corner position was witnessed by:

Steel Sign Post, South, 4.0 feet:

2021; (July) Itasca County Department of Surveying and Mapping personnel T. Lasecki and W. Storm recovered the monument as set in 1985 up 12". The monument was driven flush with the ground and geodetic coordinates were collected on the monument. Township 144-25 Township Field Book 1, page 33. The recovered and established witnesses are as shown on the face of this document.

