



A000670881

OFFICE OF THE COUNTY RECORDER  
CASS COUNTY, MINNESOTA  
CERTIFIED, FILED, AND/OR  
RECORDED ON

4/1/2021 10:38:22 AM

AS DOC #: A000670881

PAGES: 3

REC FEES: 0.00

KATHRYN M. NORBY  
CASS COUNTY RECORDER

BY SF Dep TX#: 170434

Index No. J.O-17.0

### CERTIFICATE OF LOCATION OF GOVERNMENT CORNER

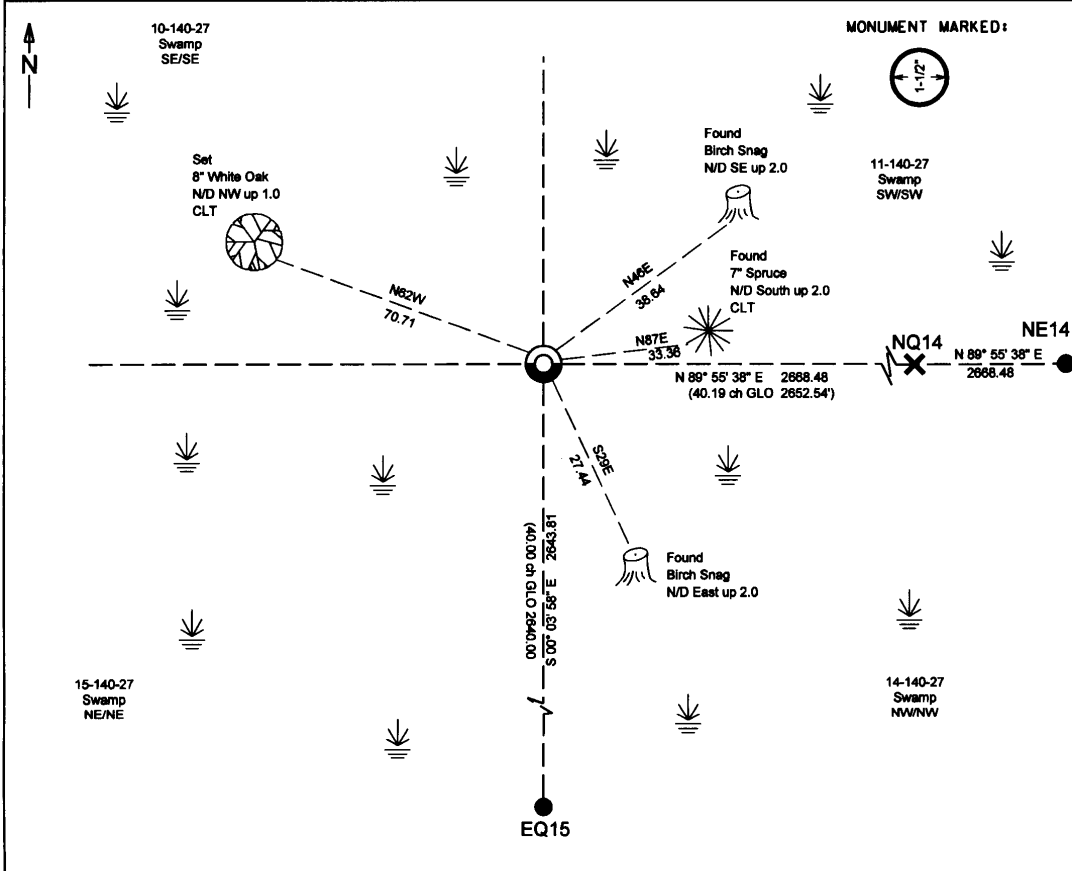
INDEX NO. J-17, Northeast CORNER OF SECTION 15, TOWNSHIP 140, RANGE 27,  
STATE OF MINNESOTA, COUNTY OF CASS.

AT THE CORNER LOCATION SHOWN ON THE SKETCH:

ON 11-23-2020 FOUND A(N) 1 1/2" iron pipe up 0.3  
DATE

LEFT MONUMENT AS FOUND,  LOWERED MONUMENT,  REMOVED MONUMENT (EXPLAIN)

ON \_\_\_\_\_ PLACED A(N) \_\_\_\_\_  
DATE



I hereby certify that this survey, plan, or report was prepared by me or under my direct supervision, and that I am a duly Licensed Land Surveyor under the laws of the State of Minnesota. I further certify that this certificate of location of government corner is correct and complete to the best of my knowledge and belief.

Signature: James Kramer  
Date: 3-17-2021  
Reg. No. 23668

NAD 1983/1996 CASS COUNTY COORDINATES  
N = 152900.153 E = 536405.699  
Coordinates derived by RTK GPS (survey grade)

SKETCH OF REFERENCE TIES  
(not to scale - bearings are magnetic)  
Ties are measured to center of monument unless otherwise noted  
UNITS =  Metric  English

**KRAMER LEAS DELEO**  
SURVEYING • ENGINEERING • PLANNING  
BRainerd ST. CLOUD

1130 Industrial Park Road SW  
Brainerd, MN 56401  
218-828-0333



**STATEMENT OF EVIDENCE:**

NORTHEAST CORNER OF SECTION 15,  
TOWNSHIP 140 NORTH, RANGE 27 WEST CASS  
COUNTY, MINNESOTA

**1873** The original public land survey was completed by Fendall G. Winston. He was chaining north between Sections 14 and 15, at 80 chains (5280.00) a wood post was set to mark the corner common to Sections 10,11,14 and 15 from which the following bearing ties were established. Information on file in the Mn historical Society, St. Paul MN. Copies on file in the Cass County Highway Department/Surveyors Office (CCHD/SO).

6" Ash	N20-20E	20 links (13.20)
6" Ash	S70-15E	15 links (9.90)
4" White Birch	S80W	20 links (13.20)
12" Tamarack	N40W	32 links (21.12)

**1906** John Curo and crew recovered original corner post and original bearing ties laying down. Crews replaced the wood post with a 4'X4'X36" wood post. The following bearing ties were noted.

6" Ash	N20-20E	20 links (13.20)
6" Ash	S70-15E	15 links (9.90)
4" White Birch	S80W	20 links (13.20)
12" Tamarack	N40W	32 links (21.12)

County Survey Record Book "A" pages 308-312  
Information on file in CCHD/SO

**1910** A.W. Moulster indicates finding the corner. No other information was given.

Microfilm- Roll 115 Bk 91 page 5  
Information on file in CCHD/SO

**1911** John Curo and crew replaced the previously set wood post with a 2 1/2" X 48" iron pipe in concrete. The following bearing ties were recovered.

6" Ash	N20-20E	20 links (13.20)
6" Ash	S70-15E	15 links (9.90)
4" White Birch	S80W	20 links (13.20)
12" Tamarack	N40W	32 links (21.12)

The following bearing ties were set.

10" Poplar	N86-53E	130.15
8" Poplar	S36-07E	113.75

County Survey Record Book "A" pages 308-312  
Information on file in CCHD/SO

**1911** Harry Todd recovered the iron pipe monument that was set by Curo.

Microfilm- Roll 115 Bk 93 page 8  
Information on file in CCHD/SO

**1937** Washburn Lake of the CCC, found a 2" iron pipe with cap alongside a 4" post. Corner location is 5327.00 East from the Northeast corner of Section 16.

Book #6 p. 52  
Information on file in CCHD/SO

**1999** Cass County Land Department crew of A.R and J.L. got a metal detector reading in the road. Its noted that a 20" red pine on the West side of road and a power pole on the East side of road.

Cass County Land Corner Record J-17  
Information on file in CCHD/SO



**2020** Crews at Kramer Leas DeLeo recovered a 2 1/2" iron pipe at the corner location. The monument is believed to be the monument that was set in 1911 by John Curo and is accepted as perpetuation of the corner location. The following bearing ties were recovered.

(UNK) Birch Snag	N46E	38.64
(UNK) Birch Snag	S29E	27.44
(UNK) 7" Spruce	N87E	33.36

The following bearing tie was set.

8" White Oak	N62W	70.71
--------------	------	-------

For additional information contact:  
**Kramer Leas Deleo PC**  
1120 Industrial Park Road Southwest  
Brainerd, MN. 56401  
218-829-5333