



A000670879

OFFICE OF THE COUNTY RECORDER
CASS COUNTY, MINNESOTA
CERTIFIED, FILED, AND/OR
RECORDED ON

4/1/2021 10:38:20 AM

AS DOC #: A000670879

PAGES: 2

REC FEES: 0.00

KATHRYN M. NORBY
CASS COUNTY RECORDER

BY SF Dep TX#: 170434

Index No. N.0-15.0

CERTIFICATE OF LOCATION OF GOVERNMENT CORNER

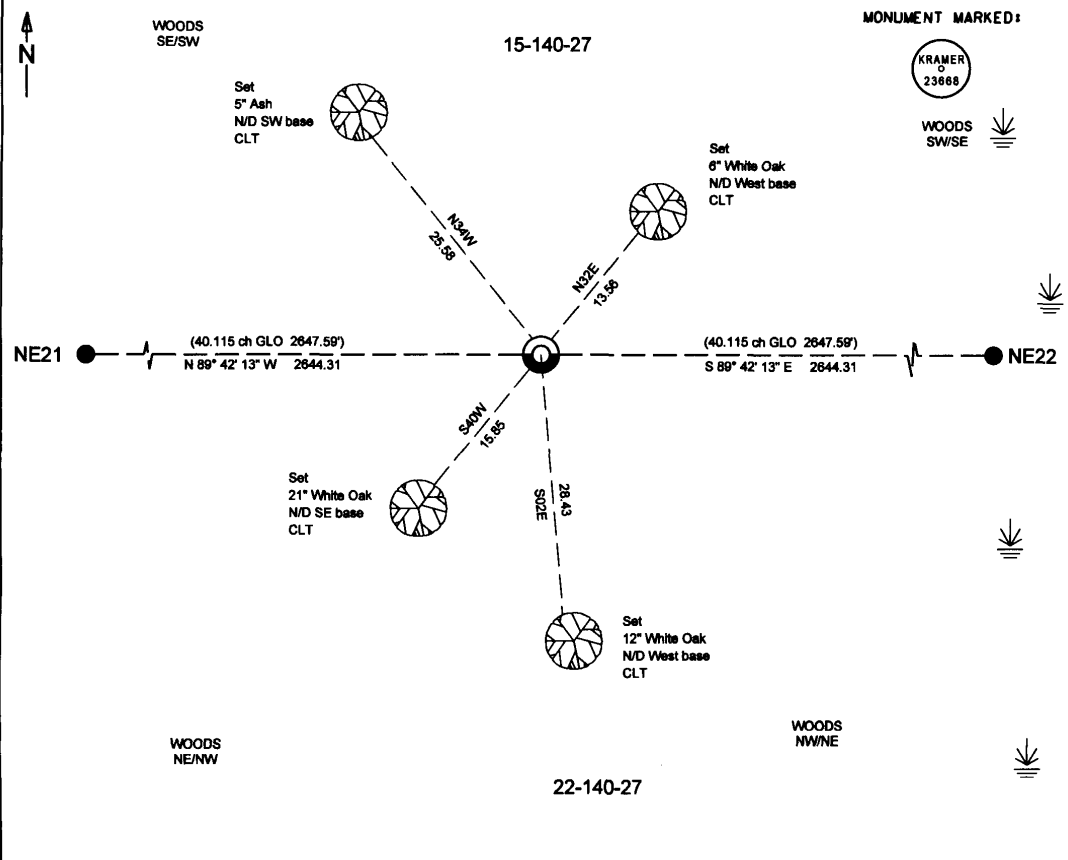
INDEX NO. N-15, North Quarter CORNER OF SECTION 22, TOWNSHIP 140, RANGE 27,
STATE OF MINNESOTA, COUNTY OF CASS.

AT THE CORNER LOCATION SHOWN ON THE SKETCH:

ON 11-23-2020 FOUND A(N) Nothing

LEFT MONUMENT AS FOUND, LOWERED MONUMENT, REMOVED MONUMENT (EXPLAIN)

ON 11-23-2020 PLACED A(N) 1/2" X 30" iron pipe with plastic cap stamped "KRAMER 23668" up 0.3



I hereby certify that this survey, plan, or report was prepared by me or under my direct supervision, and that I am a duly Licensed Land Surveyor under the laws of the State of Minnesota. I further certify that this certificate of location of government corner is correct and complete to the best of my knowledge and belief.

Signature: James Kramer

Date: 3-17-2021

Reg. No. 23668

NAD 1983/1996 CASS COUNTY COORDINATES
N= 147642.650 E= 533764.789

Coordinates derived by RTK GPS (survey grade)

SKETCH OF REFERENCE TIES
(not to scale - bearings are magnetic)
Ties are measured to center of monument unless otherwise noted

UNITS = Metric English



STATEMENT OF EVIDENCE RELATIVE TO THIS CORNER LOCATION IS ON THE BACK OF THE PAGE

Page 1 of 2



STATEMENT OF EVIDENCE:

NORTH QUARTER CORNER OF SECTION 22,
TOWNSHIP 140 NORTH, RANGE 27 WEST CASS
COUNTY MINNESOTA

1873 The original public land survey was completed by Fendall G. Winston. He was chaining east between Sections 15 and 22, at 40.00 chains (2640.00) set a temporary corner, at 80.23 chains (5295.18) hit the corner common to Section 24, 15 ,22 and 23. Chained back west on a true line between Sections 15 and 22, at 40.11 chains (2647.26) set a wood post to mark the North Quarter corner of Section 22 from which the following bearing ties were set. Information on file in the MN historical Society, St. Paul MN. Copies on file in the Cass County Highway Department/Surveyors Office (CCHD/SO).

6" Balsam	S80E	16 links (10.56)
6" Maple	N30W	35 links (23.10)

2020 Crews at Kramer Leas DeLeo searched for original corner evidence and found no evidence of the corner location or bearing accessories. The corner location is considered lost, the corner location was derived by proportional measures between the Northwest and Northeast corners of Section 22. The following bearing ties were set.

21" White Oak	S40W	15.85
12" White Oak	S02E	28.43
6" White Oak	N32E	13.56
5" Ash	N34W	25.58

For additional information contact:
Kramer Leas Deleo PC
1120 Industrial Park Road Southwest
Brainerd, MN. 56401
218-829-5333