

I HEREBY CERTIFY THAT THIS DOCUMENT AND THE DATA CONTAINED HEREIN WAS PREPARED BY ME OR UNDER MY DIRECT SUPERVISION.

Mary T. Carlson 2/25/2021  
GUY T CARLSON DATE

LICENSE NO. 40991

- LAND SURVEYOR       PROFESSIONAL ENGINEER
- COUNTY SURVEYOR       COUNTY ENGINEER

NAD 1983 (1996 HARN) CASS COUNTY NORTH ZONE COORDINATES  
N= 321946.085 E= 447994.348 US SURVEY FT  
(COORDINATES ARE SHOWN AS INFORMATION ONLY, SUBJECT TO VERIFICATION)



**A000670652**

**OFFICE OF THE COUNTY RECORDER  
CASS COUNTY, MINNESOTA  
CERTIFIED, FILED, AND/OR  
RECORDED ON**

3/26/2021 12:33:05 PM

AS DOC #: A000670652

PAGES: 2

REC FEES: 0.00

**KATHRYN M. NORBY  
CASS COUNTY RECORDER**

BY NG Dep TX#: 170246

## CERTIFICATE OF LOCATION OF GOVERNMENT CORNER

INDEX NO. A-23, NORTH QUARTER CORNER OF SECTION 1, TOWNSHIP 145, RANGE 30, 5TH P.M.  
STATE OF MINNESOTA, COUNTY OF CASS

AT THE CORNER LOCATION SHOWN ON THE SKETCH:

- ON 1/15/2021 FOUND A(N) A STAMPED BRASS CAP ATTACHED TO A 1" BY 36" IRON PIPE.
- LEFT MONUMENT AS FOUND,       LOWERED MONUMENT,       REMOVED MONUMENT (EXPLAIN)
- ON \_\_\_\_\_ DATE PLACED A(N) \_\_\_\_\_

### SKETCH OF REFERENCE TIES

DECLINATION 0°  
SKETCH NOT TO SCALE

BELTRAMI COUNTY

MONUMENT MARKED:



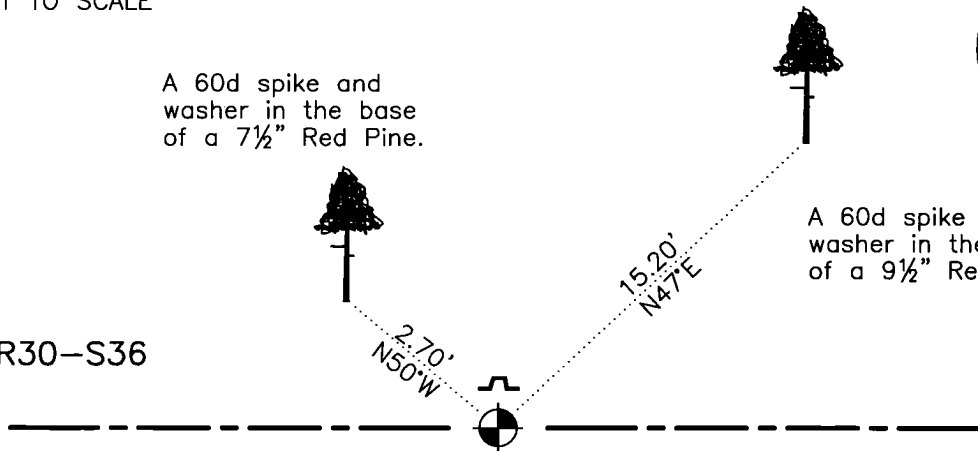
A 60d spike and washer in the base of a 7½" Red Pine.



A 60d spike and washer in the base of a 9½" Red Pine.

T146-R30-S36

T145-R30-S1



CASS COUNTY

STATEMENT OF EVIDENCE RELATIVE TO THIS CORNER LOCATION IS ON BACK OF PAGE



**STATEMENT OF EVIDENCE:** Quarter Corner of Section 36, Township 146 North, Range 30 West, and Section 1, Township 145 North, Range 30 West, of the 5th Principal Meridian.

1873; This corner was originally established by P.H. Conger, Deputy Surveyor under contract to the General Land Office (GLO), now the Bureau of Land Management (BLM). A copy of the plat of this township and hand copied field notes are available on the BLM website. These Field notes indicate a wood post was set to mark this corner position, which was witnessed by:

Jack Pine,	10",	South 76° West,	66 links,	39.60 feet;
Jack Pine,	10",	North 65° West,	79 links,	52.14 feet:

1902; (December) A portion of a survey for the Lake Winnibigoshish Reservoir was performed by Mr. C.H. Ford of the United States Army Corps of Engineers (USACE). Mr. Ford recovered the 1873 witness trees, noting that the tree to the northwest was dead and down. This information is found in USACE Field Book A1-318, page 77. No additional witnesses were added to this position.

1933; (May) A Dependent Resurvey of a portion of T146N-R30W was performed by Cadastral Surveyor Hal D. Craig of the BLM. Mr. Craig affixed a brass cap to a 36" by 1" iron post from the remains of two GLO witness trees described as follows:

Burned stump of Jack Pine,	12",	South 74° West,	66 links,	39.60 feet;
Fallen and burned Jack Pine,	12",	North 67° West,	79 links,	52.14 feet;

He added the following witnesses:

Red Oak,	12",	North 43° West,	88 links,	58.08 feet;
Jack Pine,	9",	South 02° East,	97 links,	64.02 feet:

2021; (January) Itasca County Department of Surveying and Mapping personnel C. Hendershott and T. Lasecki recovered the 1933 monument while comparing the calculated USACE position with the monumented position today (7.45'). Geodetic coordinates were established on the monument using VRS RTK. They did not recover evidence of the 1933 witnesses. This information is found in the Itasca County 146-29 Field Book 2, page 39. The established witnesses are as shown on the face of this certificate.

***The chain of history indicates that this position is a direct perpetuation of the corner as established in 1873.***