



A000670647

**OFFICE OF THE COUNTY RECORDER
CASS COUNTY, MINNESOTA
CERTIFIED, FILED, AND/OR
RECORDED ON**

3/26/2021 12:33:00 PM

AS DOC #: A000670647

PAGES: 2

REC FEES: 0.00

**KATHRYN M. NORBY
CASS COUNTY RECORDER**

BY NG Dep TX#: 170246

I HEREBY CERTIFY THAT THIS DOCUMENT AND THE DATA CONTAINED HEREIN WAS PREPARED BY ME OR UNDER MY DIRECT SUPERVISION.

Guy T. Carlson 2/25/2021
GUY T CARLSON DATE

LICENSE NO. 40991

- LAND SURVEYOR PROFESSIONAL ENGINEER
- COUNTY SURVEYOR COUNTY ENGINEER

NAD 1983 (1996 HARN) CASS COUNTY NORTH ZONE COORDINATES
N= 328055.581 E= 450618.975 US SURVEY FT
(COORDINATES ARE SHOWN AS INFORMATION ONLY, SUBJECT TO VERIFICATION)

CERTIFICATE OF LOCATION OF GOVERNMENT CORNER

INDEX NO. V-25, NORTHEAST CORNER OF SECTION 36, TOWNSHIP 146, RANGE 30, 5TH P.M.
STATE OF MINNESOTA, COUNTY OF CASS

AT THE CORNER LOCATION SHOWN ON THE SKETCH:

- ON 1/14/2021 FOUND A(N) GLO Brass capped monument in a concrete cylinder up 6"
- LEFT MONUMENT AS FOUND, LOWERED MONUMENT, REMOVED MONUMENT (EXPLAIN)
- ON _____ DATE _____ PLACED A(N) _____

SKETCH OF REFERENCE TIES

DECLINATION 0°
SKETCH NOT TO SCALE



A 60d spike and washer in the base of a 9 1/2" Aspen.

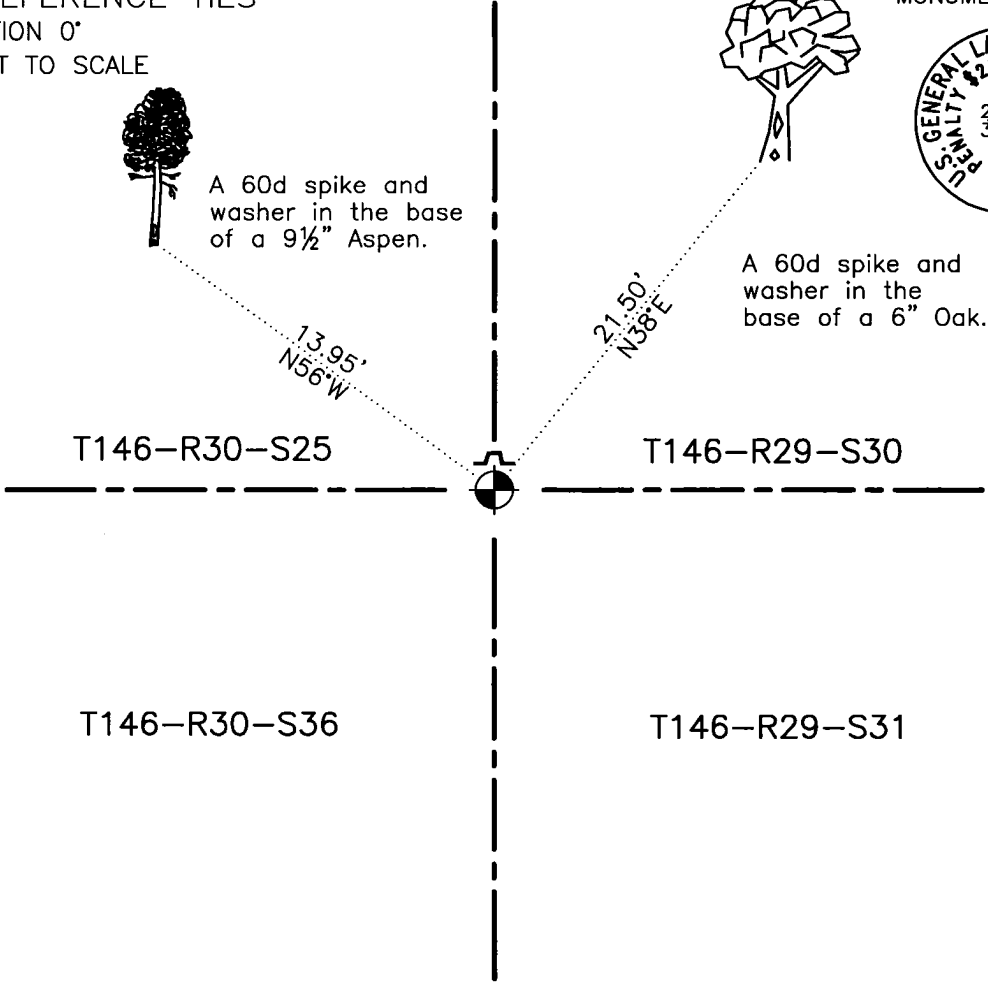


A 60d spike and washer in the base of a 6" Oak.

MONUMENT MARKED:



BELTRAMI COUNTY



CASS COUNTY Page 1 of 2 A000670647



STATEMENT OF EVIDENCE RELATIVE TO THIS CORNER LOCATION IS ON BACK OF PAGE

STATEMENT OF EVIDENCE: Northeast Corner of Section 36, Township 146 North, Range 30 West, of the 5th Principal Meridian.

1873; This corner was originally established by P.H. Conger, Deputy Surveyor under contract to the General Land Office (GLO), now the Bureau of Land Management (BLM). A copy of the plat of this township and hand copied field notes are available on the BLM website. These Field notes indicate a wood post was set to mark this corner position, which was witnessed by:

Norway Pine,	30", North 48° East,	29 links,	19.14 feet;
Norway Pine,	20", North 78° West,	131 links,	86.46 feet;
Norway Pine,	24", South 52½° West,	148 links,	97.68 feet;
Norway Pine,	20", South 37° East,	158 links,	104.28 feet;

1902; (December) A portion of a survey for the Lake Winnibigoshish Reservoir was performed by Mr. C.H. Ford of the United States Army Corps of Engineers (USACE). Mr. Ford recovered the 1873 witness trees to the SW and NW. This information is found in USACE Field Book A1-318, page 58. No additional witnesses were added to this position.

1933; (May) A Dependent Resurvey of a portion of T146N-R30W was performed by Cadastral Surveyor Hal D. Craig of the BLM. Mr. Craig set a brass tablet embedded in a cylindrical concrete monument from the remains of the GLO witness trees described as follows:

Burned Norway Pine stump,	24", North 48° East,	29 links,	19.14 feet;
Burned Norway Pine stump,	25", North 78° West,	131 links,	86.46 feet;
Burned Norway Pine stub,	28", South 52½° West,	148 links,	97.68 feet;
Norway Pine stump,	28", South 37° East,	158 links,	104.28 feet;

He added the following witnesses:

Burr Oak,	6", South 57 3/4° West,	333 links,	219.78 feet;
Jack Pine,	5", North 36 3/4° West,	164 links,	108.24 feet;

2021; (January) Itasca County Department of Surveying and Mapping personnel C. Hendershott and T. Lasecki recovered the 1933 monument while comparing the calculated USACE position with the monumented position today (2.35'). Geodetic coordinates were established on the monument using a Fast Static observation. This information is found in the Itasca County 146-29 Field Book 2, page 36. The established witnesses are as shown on the face of this certificate.

The chain of history indicates that this position is a direct perpetuation of the corner as established in 1873.