



A000670619

OFFICE OF THE COUNTY RECORDER
CASS COUNTY, MINNESOTA
CERTIFIED, FILED, AND/OR
RECORDED ON

3/26/2021 8:15:47 AM

AS DOC #: A000670619

PAGES: 2

REC FEES: 0.00

KATHRYN M. NORBY
CASS COUNTY RECORDER

BY NG Dep TX#: 170225

I HEREBY CERTIFY THAT THIS DOCUMENT AND THE DATA
CONTAINED HEREIN WAS PREPARED BY ME OR UNDER
MY DIRECT SUPERVISION.

Guy T. Carlson 2/25/2021
GUY T. CARLSON DATE

LICENSE NO. 40991

- LAND SURVEYOR PROFESSIONAL ENGINEER
- COUNTY SURVEYOR COUNTY ENGINEER

NAD 1983 (1996 HARN) CASS COUNTY NORTH ZONE COORDINATES
N= 326625.382 E= 461346.394 US SURVEY FT
(COORDINATES ARE SHOWN AS INFORMATION ONLY, SUBJECT TO VERIFICATION)

CERTIFICATE OF LOCATION OF GOVERNMENT CORNER

INDEX NO. V.9-9.0, MEANDER CORNER OF SECTIONS 32&33, TOWNSHIP 146, RANGE 29, 5TH P.M.

STATE OF MINNESOTA, COUNTY OF CASS

AT THE CORNER LOCATION SHOWN ON THE SKETCH:

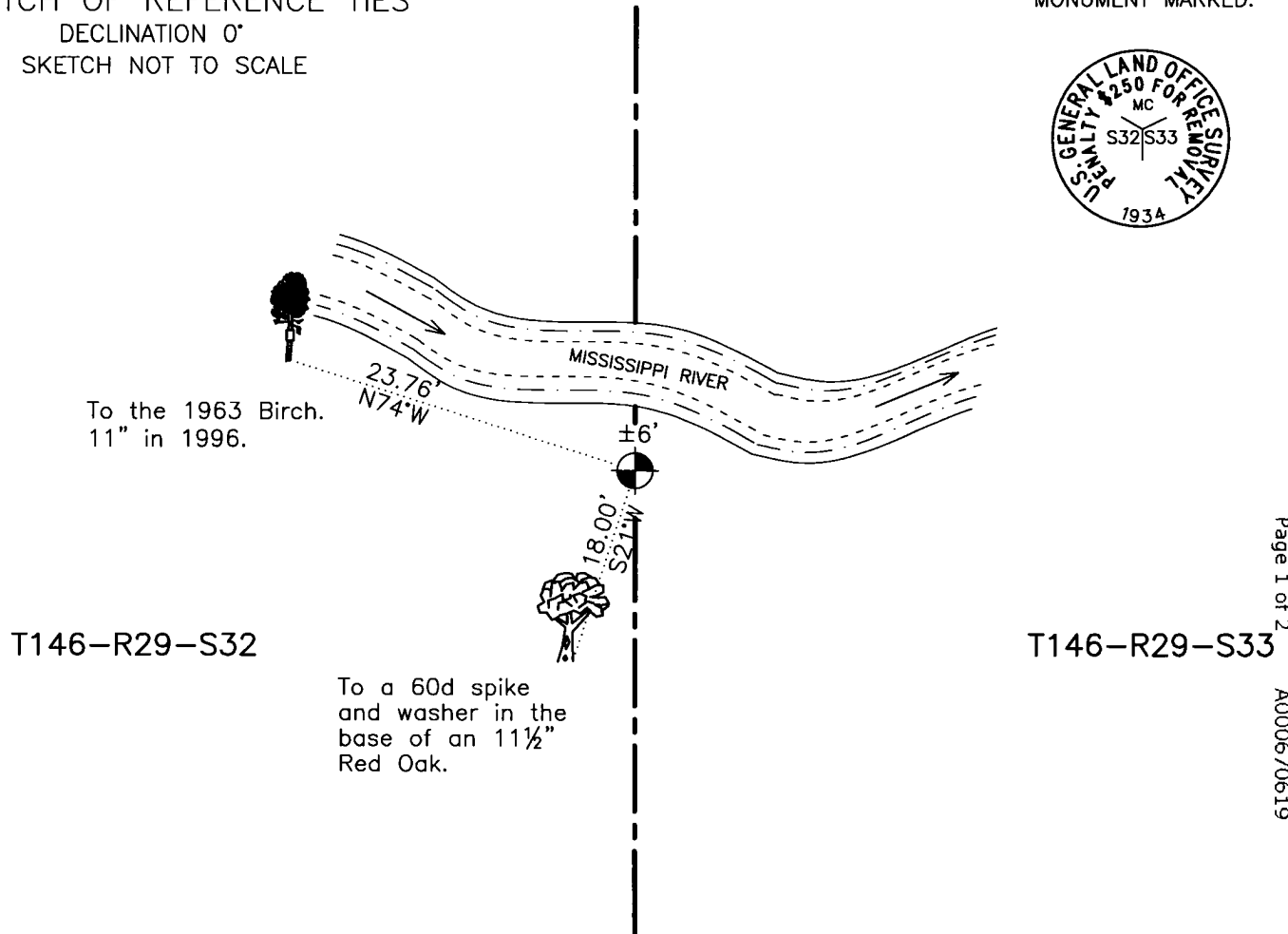
- ON 7/09/2020 FOUND A(N) STAMPED BRASS CAP ATTACHED TO A 1" BY 36" IRON PIPE.
- LEFT MONUMENT AS FOUND, LOWERED MONUMENT, REMOVED MONUMENT (EXPLAIN)
- ON _____ DATE PLACED A(N) _____

SKETCH OF REFERENCE TIES

DECLINATION 0°
SKETCH NOT TO SCALE



MONUMENT MARKED:



T146-R29-S32

T146-R29-S33

To a 60d spike
and washer in the
base of an 11½"
Red Oak.

STATEMENT OF EVIDENCE RELATIVE TO THIS CORNER LOCATION IS ON BACK OF PAGE

STATEMENT OF EVIDENCE: Meander Corner of Sections 32 and 33, South shore of the Mississippi River, Township 146 North, Range 29 West, of the 5th Principal Meridian.

1873; This corner was originally established by P.H. Conger, Deputy Surveyor under contract to the General Land Office (GLO), now the Bureau of Land Management (BLM). A copy of the plat of this township and hand copied field notes are available on the BLM website. These Field notes indicate a wood post was set to mark this corner position, which was witnessed by:

Aspen,	16",	North 85° East,	9 links,	5.94 feet;
Birch,	12",	South 81° West,	20 links,	13.20 feet:

1934; (June) A Dependent Resurvey of T146N-R29W was performed by Cadastral Surveyor Hal D. Craig of the BLM. Mr. Craig failed to find any evidence of this corner position. He affixed a stamped brass cap to a 36" by 1" iron pipe along the southerly shore of the Mississippi River and on-line between the northeast corner and east quarter corner of Section 32. This corner position was witnessed by:

Birch,	5",	North 74½° West,	36 links,	23.76 feet;
Jack Pine,	3",	North 79 3/4° East,	44 links,	29.04 feet:

1968; (November) Survey technicians for the United States Forest Service (USFS) recovered the 1934 monument and both witnesses. This information is found in Township Corner Restoration Book 2C, page 53. Bill Okerman, LS 6807, recorded an Affidavit as to Location of Government Corner as Document No. 275572. The following witnesses were added:

Jack Pine,	10",	South 89° East,	38.62 feet;
Red Oak,	9",	South 79° West,	33.30 feet;
4" Cedar Post,		South,	13.20 feet:

1996; (April) R. Main, survey technician for the USFS recovered the 1934 monument ±20' southerly of the river's edge. He notes that the 1934 Jack Pine witness and the 1968 bearing trees are down. This corner position was witnessed by:

1934 Birch,	11",	North 74½° West,	23.76 feet;
Birch,	9",	South 60° East,	8.60 feet; Not marked.
4" Cedar Post,		South,	13.33 feet:

2020; (July) Itasca County Department of Surveying and Mapping personnel G. Robertson and T. Lasecki recovered the 1934 monument along with the 1934 Birch witness tree. No other evidence was readily recovered due to very thick foliage. Geodetic coordinates were established on the monument using a Fast Static observation. This information is found in the Itasca County 146-29 Field Book 2, page 26. The recovered and established witnesses are as shown on the face of this certificate.

The monument concurs with the position as established and set in 1934.