

I hereby certify that this survey, plan, or report was prepared by me or under my direct supervision, and that I am a duly Licensed Land Surveyor under the laws of the State of Minnesota.

Signature: James Kramer
James Kramer

Date: 12-9-2019

Reg. No. 23668



A000670259

**OFFICE OF THE COUNTY RECORDER
CASS COUNTY, MINNESOTA
CERTIFIED, FILED, AND/OR
RECORDED ON**

3/16/2021 11:05:57 AM

AS DOC #: A000670259

PAGES: 2

REC FEES: 0.00

**KATHRYN M. NORBY
CASS COUNTY RECORDER**

BY NG Dep TX#: 169950

NAD 1983/1996 CASS COUNTY COORDINATES (SOUTH ZONE)

N= 209383.259

E= 457706.095

CERTIFICATE OF LOCATION OF GOVERNMENT CORNER

INDEX NO. A.0-3.0, North Quarter CORNER OF SECTION 6, TOWNSHIP 134, RANGE 31, STATE OF MINNESOTA, COUNTY OF CASS

AT THE CORNER LOCATION SHOWN ON THE SKETCH:

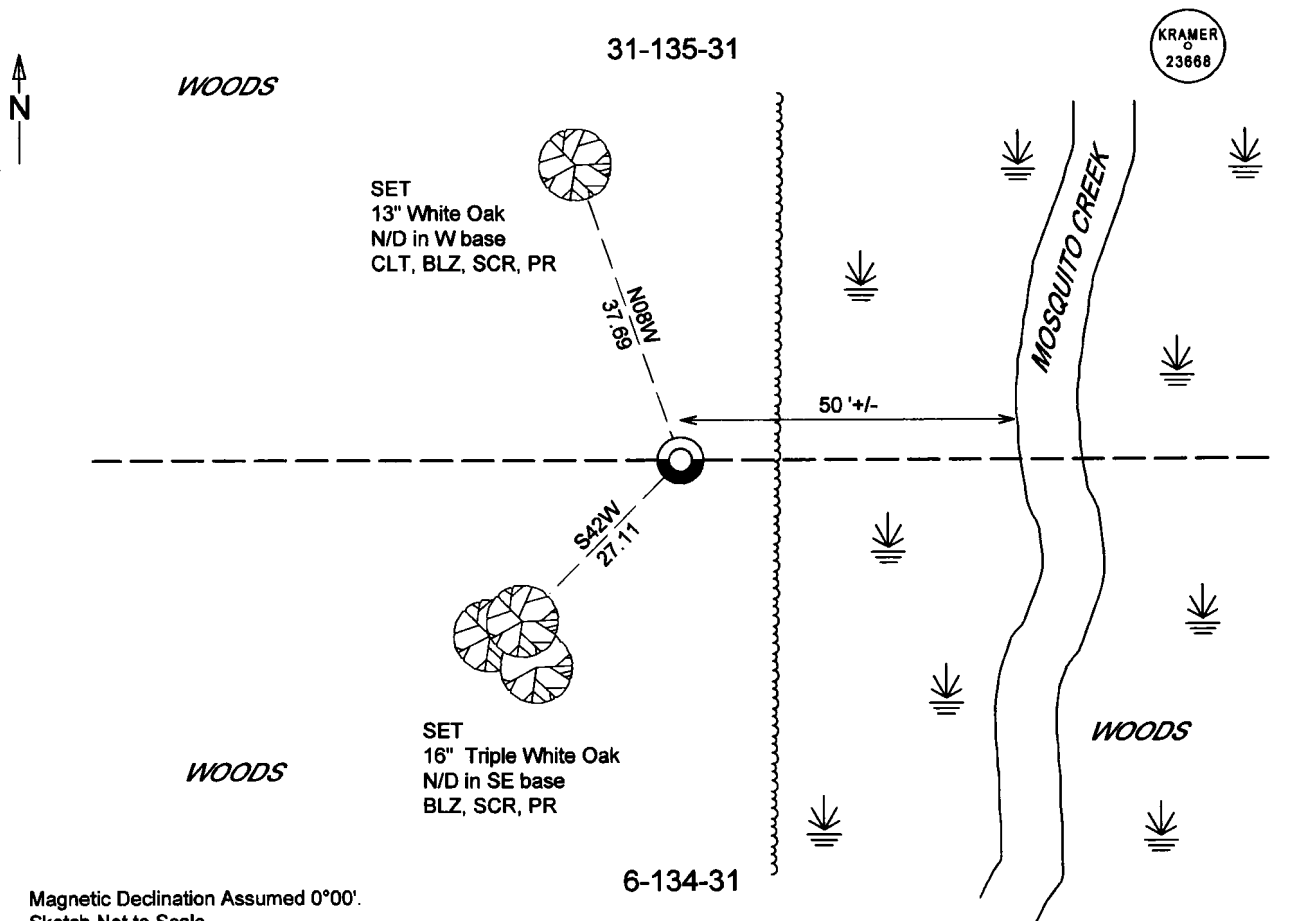
ON 4-24-2017 FOUND Nothing

LEFT MONUMENT AS FOUND, LOWERED MONUMENT, REMOVED MONUMENT (EXPLAIN)

ON 4-24-2017 PLACED A(N) 1/2"X30" iron pipe with plastic RLS cap stamped "KRAMER 23668" up 0.3'

SKETCH OF REFERENCE TIES

MONUMENT MARKED:



Magnetic Declination Assumed 0°00'.
Sketch Not to Scale.

STATEMENT OF EVIDENCE RELATIVE TO THIS CORNER LOCATION IS ON THE BACK OF THE PAGE

Page 1 of 2 A000670259



Index No. A.0-3.0

Statement of Evidence

***North Quarter Corner Section 6, Township 134 North, Range 31 West,
Cass County, Minnesota***

1858 The Original Survey by the United States Government Land Office was conducted by E.N. Darling. A wood post was set to mark the corner with the following bearing ties. Information on file in the Minnesota Historical Society, St. Paul MN. Copies on file in Cass County Highway Department/Surveyors Office (CCHD/SO).

<u>Tie</u>	<u>Bearing</u>	<u>Distance</u>
5" Pine	S10W	8 links (5.28 feet)
6" Pine	N34W	29 links (19.14 feet)

2017 Crews at Kramer Leas Deleo searched for original corner evidence and found nothing. Crew then placed a ½" X 30" Iron Pipe with plastic cap stamped "KRAMER 23668" at the corner location. The following bearing ties were also set.

<u>Tie</u>	<u>Bearing</u>	<u>Distance</u>
16" Triple White Oak	S42W	27.11 feet
13" White Oak	N08W	37.69 feet