



A000668748

OFFICE OF THE COUNTY RECORDER
CASS COUNTY, MINNESOTA
CERTIFIED, FILED, AND/OR
RECORDED ON

1/28/2021 10:33:29 AM

AS DOC #: A000668748

PAGES: 2

REC FEES: 0.00

KATHRYN M. NORBY
CASS COUNTY RECORDER

BY SF Dep TX#: 168663

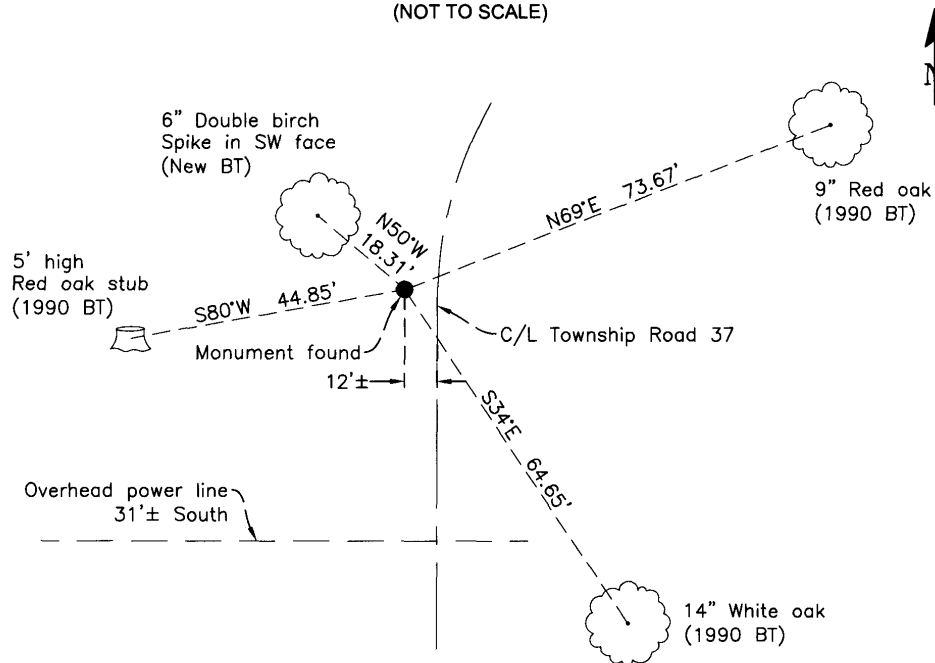
CERTIFICATE OF LOCATION OF GOVERNMENT CORNER

Northeast Corner of Section 32, Township 142 N, Range 30 W, 5th P.M.
County of Cass, State of Minnesota

At the corner location shown on the sketch :

- On 9/29/2020 found GLO brass capped monument in good condition, 12" down
in the west shoulder of a north/south gravel road.
- left monument as found lowered monument removed monument (explain)
- On _____ set _____

SKETCH OF REFERENCE TIES (NOT TO SCALE)



Note:
Distances shown are horizontal
Bearings shown are geodetic

Statement of evidence relative to this corner location is on the back of this page

I hereby certify that this survey, plan, or report was prepared by me or under my direct supervision and that I am a duly Licensed Land Surveyor under the laws of the state of Minnesota.

Aaron J. Skattum

Aaron J. Skattum
MN License No. 54139

12-14-2020
Date

Corner Index No. V.0-9.0
GCDB ID No. 300200

Cass County Coordinates
(North Zone, 2011 Adj.)
N: 201,273.165
E: 431,420.251



Page 1 of 2

A000668748



Corner Index No. V.0-9.0

STATEMENT OF EVIDENCE

Northeast Corner of Sec. 32, T.142N., R.30W., 5th P.M., Cass County, MN

- 1873 P.H. Conger, U.S. General Land Office, originally established this corner while surveying the subdivision lines of this township, and set wood post to mark the corner position with the following witnesses:

8" Pine	N05°E	37 links
10" Pine	N08°W	38 links
10" Oak	S12°W	152 links
6" Poplar	S07°E	95 links

Information on file at the MN Historical Society, St. Paul, MN. Copies filed with the Cass County Highway Department/Surveyor's Office (CCHD/SO).

- 1917 A.N. Kimmell, U.S. General Land Office, found remains of the original bearing trees and set an iron post 2" x 36" long, with brass cap and noted the following witnesses:

8" Pine	N2.5°E	37 links (24.42')	1873 BT, now 8" stump
10" Pine	N09°W	38 links (25.08')	1873 BT, now 12" stump
10" Oak	S9.25°W	150 links (100.32')	1873 BT, now 18" stump
6" Poplar	S9.5°E	95 links (62.70')	1873 BT, now stump hole
5" White pine	N69.25°E	216 links (142.56')	New BT
10" Red oak	S72°E	271 links (178.86')	New BT

Information on file at CCHD/SO

- 1937 R. Moore, U.S. Forest Service (Form 874-9, USFS Records) found a 3" aspen post at the edge of the road, 36" above ground in good condition at this corner. He noted it was not the GLO corner and that the GLO corner was destroyed in road construction. Also noted was a 6" cedar post (marking the approximate corner) with tag 1.61 chains north of this corner.

USFS records cited herein are on file at the Chippewa National Forest Supervisor's Office.

- 1990 C. Krause, U.S. Forest Service (Corner Book 1, Page 23, USFS Records) found the GLO iron monument with cap, bent over, 7" below ground in the centerline of an old road to the west, 6' south of east/west township road, and 35' west of an old road north/south. The iron pipe was straightened and reset with the cap 2" above ground. The following witnesses were noted:

5" White pine	N69.25°E	216 links (142.56')	1917 BT, not found
10" Red oak	S72°E	271 links (178.86')	1917 BT, now 24" stump
8" Red oak	S80°W	44.85'	New BT
5" Red oak	N69°E	73.67'	New BT
10" White oak	S34°E	64.65'	New BT
Steel signpost	N22°W	29.60'	Signpost set
Steel signpost	West	4.35'	Signpost set
Steel signpost	East	4.30'	Signpost set

- 1992 C. Krause & G. Brama, U.S. Forest Service (Corner Book 1, Page 23, USFS Records) removed the GLO monument for road construction and the two closest signs for road construction. The monument was reset in the same position later that year, with the remaining 1990 ties staying unchanged.

- 2000 Cass County engineering technicians (per CCHD/SO) found brass capped monument down 0.6", 8' west of centerline of road and noted the following ties:

6" Red oak	N69°E	73.67'
10" White oak	S34°E	64.65'
10" Red oak	S80°W	44.85'
Sign post	NW	29.98'

- 2003 T. Freeman, Northern Engineering & Consulting Inc., (Certificate of Survey #2134, CCHD/SO) shows this corner as being a found GLO monument.

- 2006 B. Skipton, Arro Land Surveyors LLC (Certificate of Survey #3186, CCHD/SO) shows this corner as being a found GLO monument.

- 2020 A. Skattum, U.S. Forest Service (Land Lines Book 33, Page 8, USFS Records) found the GLO monument in good condition, 12" below the surface of the westerly shoulder of a north-south gravel road, and noted the following witnesses:

8" Red oak	S80°W	44.85'	1990 BT, now a 5' high cut-off stub
5" Red oak	N69°E	73.67'	1990 BT, now 9" in good condition
10" White oak	S34°E	64.65'	1990 BT, now 14" in good condition
Steel signpost	N22°W	29.60'	1990 signpost in place
6" Double birch	N50°W	18.31'	New BT, spike in SW face