



A000668739

OFFICE OF THE COUNTY RECORDER
CASS COUNTY, MINNESOTA
CERTIFIED, FILED, AND/OR
RECORDED ON

1/28/2021 10:33:20 AM

AS DOC #: A000668739

PAGES: 2

REC FEES: 0.00

KATHRYN M. NORBY
CASS COUNTY RECORDER

BY SF Dep TX#: 168663

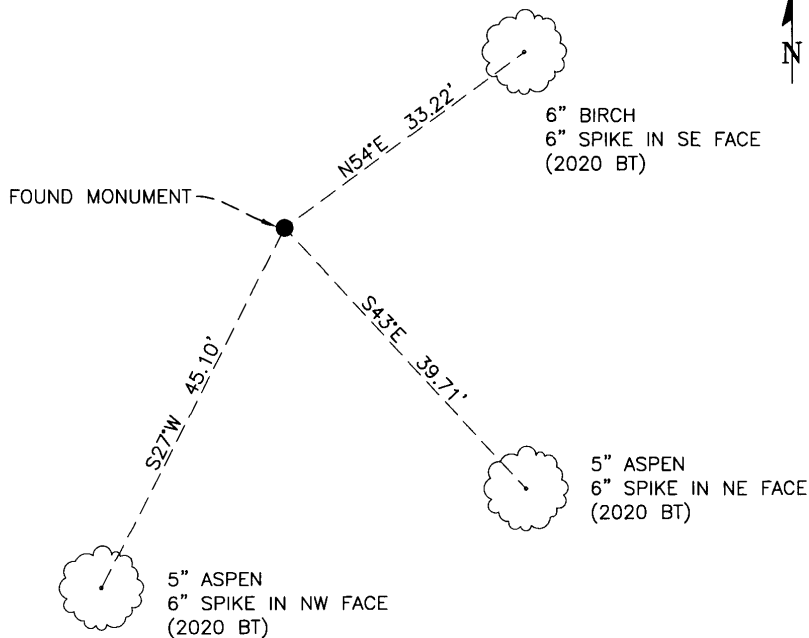
CERTIFICATE OF LOCATION OF GOVERNMENT CORNER

North 1/4 Corner of Section 5, Township 145 N, Range 29 W, 5th P.M.
County of Cass, State of Minnesota

At the corner location shown on the sketch :

- On 05/06/2020 found 2" iron post with brass cap, marked as shown in 1934
GLO field notes, its top 9" above the ground and in good condition.
- left monument as found lowered monument removed monument (explain)
- On _____ set _____

SKETCH OF REFERENCE TIES (NOT TO SCALE)

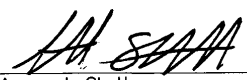


Note:
Distances shown are horizontal
Bearings shown are geodetic

Sheet 1 of 2

Statement of evidence relative to this corner location is on the back of this page

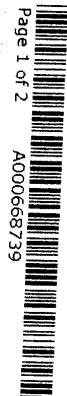
I hereby certify that this survey, plan, or report was prepared by me or under my direct supervision and that I am a duly Licensed Land Surveyor under the laws of the state of Minnesota.


Aaron J. Skattum
MN License No. 54139

12-28-2020
Date

Corner Index No. A.0-7.0
GCDB ID No. 240700

Cass County Coordinates
North Zone, NAD83(2011)
N: 322,642.428
E: 458,675.296



Corner Index No. A.0-7.0

STATEMENT OF EVIDENCE

North 1/4 Corner of Sec. 5, T.145N., R.29W., 5th P.M., Cass County, MN

1873 P.H. Conger, US General Land Office, originally established this corner while surveying the north line of the township, and set wood post to mark the corner position with the following witnesses:

14" Jack pine	N51°W	21 links (13.86')
5" Jack pine	S20.5°W	28 links (18.48')

Information on file at the MN Historical Society, St. Paul, MN. Copies filed with the Cass County Highway Department/Surveyor's Office (CCHD/SO).

1934 H.D. Craig, US General Land Office, during a dependent resurvey of the north line of this township, reestablished this corner from the remains of the original bearing trees and set a 2"x36" iron post with brass cap and noted the following ties:

Jack pine	S20°W	28 links (18.48')	1873 BT, found burned snag
16" Jack pine	N51°W	21 links (13.86')	1873 BT, found burned stump
4" Jack pine	N39°E	70.5 links (46.20')	New BT
4" Jack pine	S42.25°E	34.5 links (22.77')	New BT

Information on file at the CCHD/SO.

1989 K. Krause & G. Brama, US Forest Service, (Corner Book 1, page 4, USFS Records) found the GLO iron monument and noted the following ties:

6" Jack pine	N39°E	46.20'	1934 BT, found 6" stub with scribe
4" Jack pine	S42.25°E	22.77'	1934 BT, not found
11" Jack pine	N55°E	48.41'	New BT
10" Jack pine	S47°E	32.05'	New BT
10" Jack pine	S18°W	24.82'	New BT
Woods trail	East	250'±	New tie
Steel signpost	North	2.6'	New 8' long steel signpost set

2020 A. Skattum, US Forest Service, (Land Lines Book 30, page 76, USFS Records) found the GLO iron monument, 9" above ground, in good condition, and noted the following ties:

5" Jack pine	S20°W	18.48'	1873 BT, now faint stump hole
6" Jack pine	N39°E	46.20'	1934 BT, now uprooted, rotten
4" Jack pine	S42.25°E	22.77'	1934 BT, not found
11" Jack pine	N55°E	48.41'	1989 BT, now dead stub
10" Jack pine	S47°E	32.05'	1989 BT, now stump & rotten log
10" Jack pine	S18°W	24.82'	1989 BT, now windwall, rotting log
Steel signpost	North	2.6'	1989 signpost inplace
5" Aspen	S27°W	45.10'	New BT
5" Aspen	S43°E	39.71'	New BT
6" Birch	N54°E	33.22'	New BT

US Forest Service records cited above are on file at the Chippewa National Forest Supervisor's Office, Cass Lake, MN.