



A000668730

OFFICE OF THE COUNTY RECORDER  
CASS COUNTY, MINNESOTA  
CERTIFIED, FILED, AND/OR  
RECORDED ON

1/28/2021 10:33:11 AM

AS DOC #: A000668730

PAGES: 2

REC FEES: 0.00

KATHRYN M. NORBY  
CASS COUNTY RECORDER  
BY SF Dep TX#: 168663

Index No. E.0-11.0

### CERTIFICATE OF LOCATION OF GOVERNMENT CORNER

NORTH QUARTER Corner of Section 9, Township 136, Range 31, 5TH P.M.

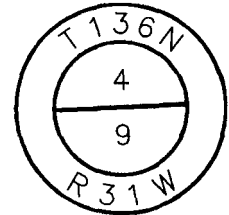
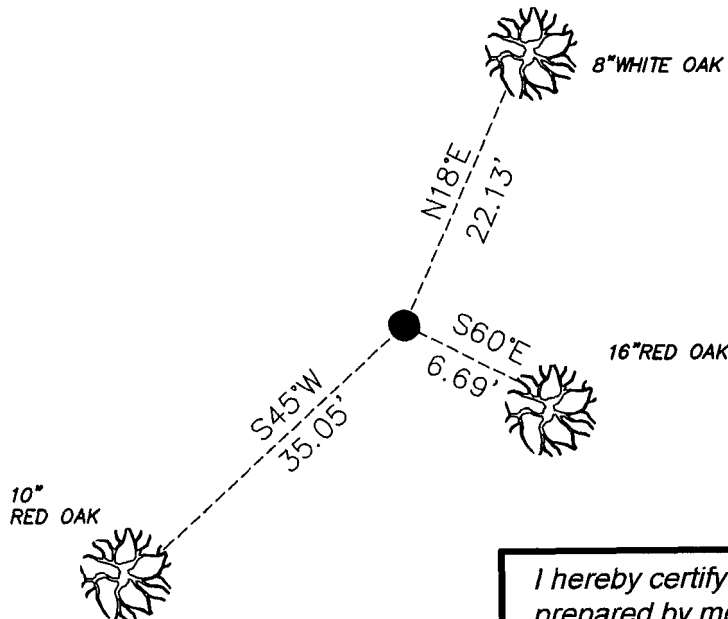
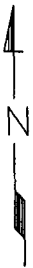
STATE OF MINNESOTA, County of CASS

At the location shown on the sketch:

- On 11/17/2020 found 2 1/2 INCH PIPE WITH PLUMBERS CAP  
DATE
- left monument as found,  lowered monument,  removed monument (explain)
- On \_\_\_\_\_ placed an \_\_\_\_\_  
DATE

SKETCH OF REFERENCE TIES (NOT TO SCALE)

ACCESSORY BEARING BASIS: BEARING



I hereby certify that this document was prepared by me or under my direct supervision and that I am a duly Licensed Land Surveyor under the laws of the State of Minnesota

*Paul Herkenhoff*  
PAUL HERKENHOFF

N= 267647.686 E= 467944.907  
DATUM= CASS COUNTY SOUTH  
NAD 83/96 ADJ. US SURVEY FT.

Date 11/24/2020 License No. 45875

Statement of evidence relative to this corner is on back of page.





T136N R31W 5th PM \* Index No. E.0-11.0

Statement of Evidence

**North Quarter corner of Section 9, Township 136 North, Range 31 West, 5th Principal Meridian.**

Sept. R.Cronk, General Land Office (GLO) Deputy Surveyor, in the notes of the subdivision of Township 136  
1870 North, Range 31 West, set a post for the original corner and referenced it as follows:

- 6" Aspen            S 20°W            4 links
- 8" Aspen            N 53° E            7 links

Said records are on file with the Minnesota Historical Society, St. Paul, Minnesota, copies are filed with the Cass County Surveyor's Office (CCSO).

1913 John. W. Curo, Cass County Surveyor, set a 2-1/2 inch by 48 inch iron pipe monument at a lost position for this corner. Filed in Cass County Book B, Pages 12-28, which is on file in the office of the Cass County Surveyor (Cass County Highway Department). The following accessories were noted.

- 6" Poplar            N 38°08'E        43.52 feet
- 6" Poplar            S 66°-23' E      44.15 feet

Dec  
2002 Cass County Survey Technicians found the 1913 Curo Monument in place, and noted the following accessories.

- 5" White Oak        N 18°E            22.13 feet
- 12" Red Oak        S 60°E            6.69 feet
- 6" Red Oak         S 45°W            35.05 feet

Nov.  
2020 Lakes Area Surveying (LAS) searched for all previous evidence, finding the 1913 Curo monument in place. Analysis of the recovered record data, field evidence and survey measurements, indicates that the monument found in November of 2020 by LAS is the accepted location of this corner