



A000667565

OFFICE OF THE COUNTY RECORDER  
CASS COUNTY, MINNESOTA  
CERTIFIED, FILED, AND/OR  
RECORDED ON

12/22/2020 12:48:08 PM

AS DOC #: A000667565

PAGES: 2

REC FEES: 0.00

KATHRYN M. NORBY  
CASS COUNTY RECORDER

BY SF Dep TX#: 167739

Twp 141 Rge 28 Index No. A.0-21.0

### CERTIFICATE OF LOCATION OF GOVERNMENT CORNER

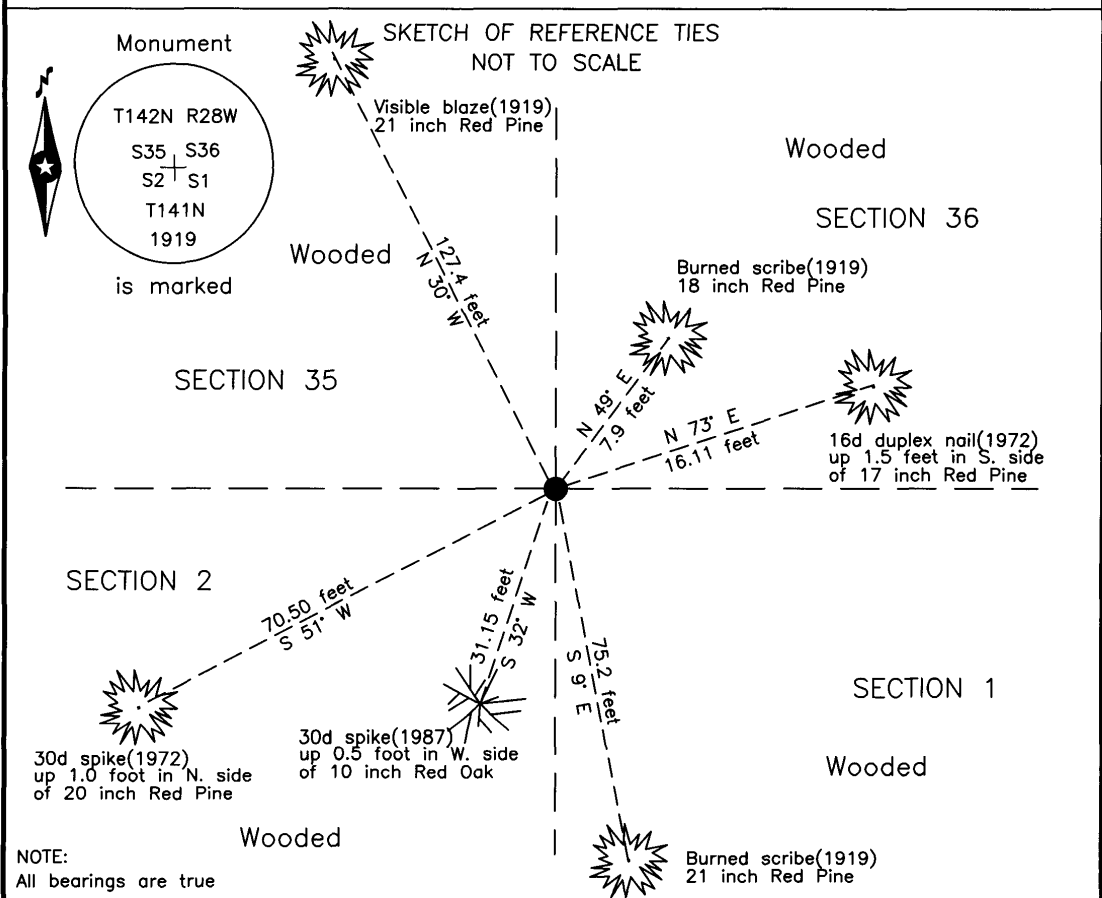
Northeast corner of Section 2, Township 141 N., Range 28 W., 5th P.M.  
State of Minnesota, County of Cass

At the corner location shown on the sketch:

On 16 April 2019 found a 2.0 inch GLO iron pipe with brass cap, down 0.5 foot,  
in east ditch of old grade.

left monument as found     lowered monument     removed monument (explain)

On \_\_\_\_\_ placed \_\_\_\_\_



Statement of evidence relative to this corner location is on the back of this page.

I hereby certify that this survey, plan or report was prepared by me or under my direct supervision and that I am a duly Licensed Land Surveyor under the laws of the State of Minnesota.

Terry L. Freeman, Cass County Surveyor  
Date 12/22/20 MN License No. 21367



Statement of Evidence

Northeast corner of Section 2, Township 141 North, Range 28 West, 5th Principal Meridian.

June 1972 W.H. Okerman, LS 6807, United States Department of Agriculture, Forest Service(USFS), found the 1919 GLO brass capped monument, at this corner position. A Certificate of Location of Government Corner was recorded with the Cass County Recorder as Document Number 588234 on January 10, 1973.

July 1987 W.E. Curo, LS 11395, found a 2 inch GLO brass cap monument, a Certificate of Location of Government Corner was recorded with the Cass County Recorders Office as Document Number 301666, on December 16, 1987.

\*\*\*\*\*

Supplemental Data not listed on above Certificate

July 1987 W.E. Curo, LS 11395, Curo Book 316, pages 19, 23 and 28, Book 318, pages 4, 7 and 11, on file in the Cass County Highway Department, Surveyor's Office (CCHD/SO), indicates corner in traverse and lists witnesses for the corner as follows:

24" N. Pine	N 47° E	7.40 feet(1919)	24" N. Pine	N 70° E	15.65 feet(1972)
10" Red Oak	S 32° W	31.15 feet			

May 2006 B. Hippen, technician, records of the CCHD/SO, found a GLO Brass cap monument, 400 feet, more or less, west of centerline of County Road #157.

April 2019 B. Hippen, technician, records of the CCHD/SO, found 2 inch outside diameter iron pipe, with GLO brass cap, down 0.5 foot in east ditch of old road grade, 400 feet, more or less, west of centerline of County Road #157 and witnesses as follows:

21" Red Pine	N 30° W	127.4 feet(1919)	18" Red Pine	N 49° E	7.9 feet(1919)
21" Red Pine	S 9° E	75.2 feet(1919)	20" Red Pine	S 51° W	70.50 feet(1972)
17" Red Pine	N 73° E	16.11 feet(1972)	10" Red Oak	S 32° W	31.15 feet(1987)

The recovered and established witnesses for this corner position are shown on the face of this document.

Analysis of the recovered record data, field evidence and survey measurements, indicates that the monument set by the CCHD/SO in 2018 is the correct perpetuation of this corner.

County Coordinates (Cass County North)

Northing 196368.20  
Easting 508912.69