

# CERTIFICATE OF LOCATION OF GOVERNMENT CORNER

NORTHEAST Corner of Section 28  
 Township 138 N., Range 32 W., 5th P.M.  
 STATE OF MINNESOTA, COUNTY OF CASS

■ On 9-01-2020, found a(n): 8"X8"X36" CONCRETE MONUMENT DOWN 1.0±

left monument as found       lowered monument  
 removed monument (explain)       raised monument  
 ■ On 9-01-2020, set a(n): 1/2" REBAR WITH ORANGE PLASTIC CAP STAMPED "STANG RLS 52591" OVER CONCRETE MONUMENT

See "Statement of Evidence" for further details (on back)



**A000667195**  
 OFFICE OF THE COUNTY RECORDER  
 CASS COUNTY, MINNESOTA  
 CERTIFIED, FILED, AND/OR  
 RECORDED ON  
12/15/2020 10:35:50 AM  
 AS DOC #: A000667195  
 PAGES: 2  
 REC FEES: 0.00  
**KATHRYN M. NORBY**  
 CASS COUNTY RECORDER  
 BY SF Dep TX#: 167513

(reserved for recording data)

GPS I.D.: RTK/VRS Co. Proj. No.: ??

## SKETCH OF REFERENCE TIES

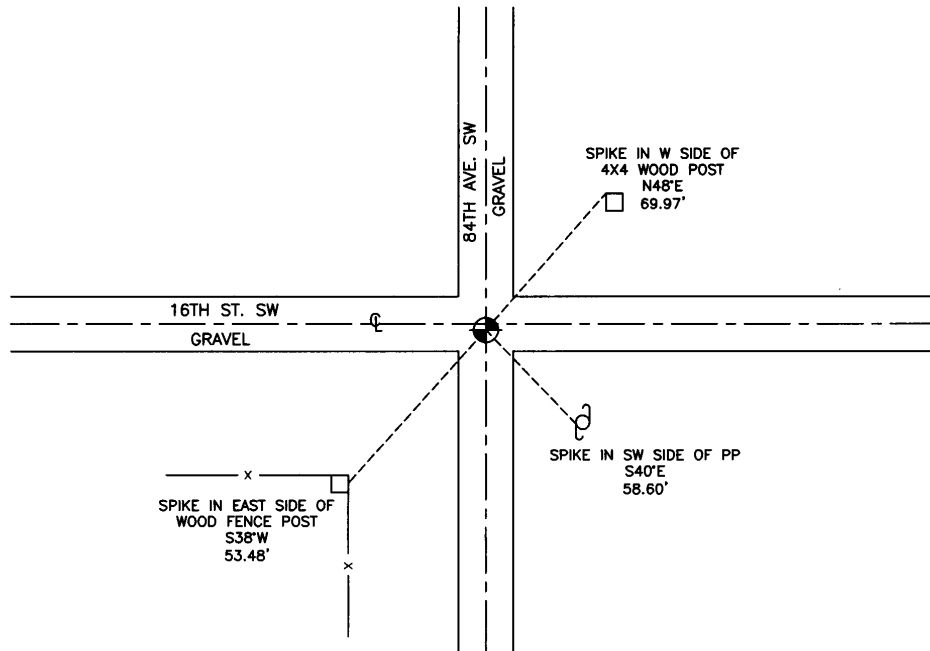


SKETCH NOT TO SCALE

MONUMENT MARKED:



REBAR W/ CAP



T138-R32-S28

### "SKETCH OF REFERENCE TIES"

(not to scale - bearings are magnetic)

Ties are measured to center of monument unless otherwise noted.

**NAD 83 (1996 adjustment)**

CASS SOUTH Northing: 315021.18  
 Easting: 435581.45

I hereby certify that this survey, plan, or report was prepared by me or under my direct supervision and that I am a duly Licensed Land Surveyor under the laws of the state of Minnesota. I further certify that this certificate of location of government corner is correct and complete to the best of my knowledge and belief.

Michael Stang  
 MICHAEL STANG

11/21/2020 License No. 52591  
 DATE

County Surveyor       Deputy County Surveyor       Professional Land Surveyor

R.0-13.0

NORTHEAST CORNER OF SECTION 28 TOWNSHIP 138 NORTH,  
RANGE 32 WEST OF THE 5<sup>TH</sup> PRINCIPAL MERIDIAN

In 1870, the original Government Surveyor (Black) set a post in place to mark the location of this Public Land Survey Corner with the following bearing trees:

11" Norway Pine, North 33.5 degrees West, 67 links

11" Norway Pine, North 8 degrees East, 53 links

10" Norway Pine, South 69.5 degrees West, 54 links

4" Aspen, South 49 degrees East, 41 links

Information on file in the MN Historical Society, St. Paul, MN and copies on file at the Cass County Highway Dept./ Surveyors Office (CCHD/SO)

In 1912, County Surveyor, John Curo was conducting survey work in this area. In his notes he states that he found stake set previously by Usher and replaced it with an 8x8x36" concrete post. Information on file at CCHD/SO (Surveyor Record Book "A", pg. 415-417).

In 2020, Northwestern Surveying and Engineering, Inc., a private Land Surveying and Engineering firm, was conducting cadastral surveying in this area. After research and review of historic documents and records a survey crew searched for evidence of this position.

On 9/01/2020 a crew excavated the area and found an 8x8x36" concrete post down 1.0 feet below surface. The crew accepted the position of the concrete post and set a ½ inch iron rebar with RLS cap stamped "Stang 52591" over top of the concrete monument. New ties were made.