



A000663575

OFFICE OF THE COUNTY RECORDER
CASS COUNTY, MINNESOTA
CERTIFIED, FILED, AND/OR
RECORDED ON

9/10/2020 11:47:58 AM

AS DOC #: A000663575

PAGES: 2

REC FEES: 0.00

KATHRYN M. NORBY
CASS COUNTY RECORDER

BY NG Dep TX#: 164742

Twp 142 Rge 28 Index No. S.0-24.0

CERTIFICATE OF LOCATION OF GOVERNMENT CORNER

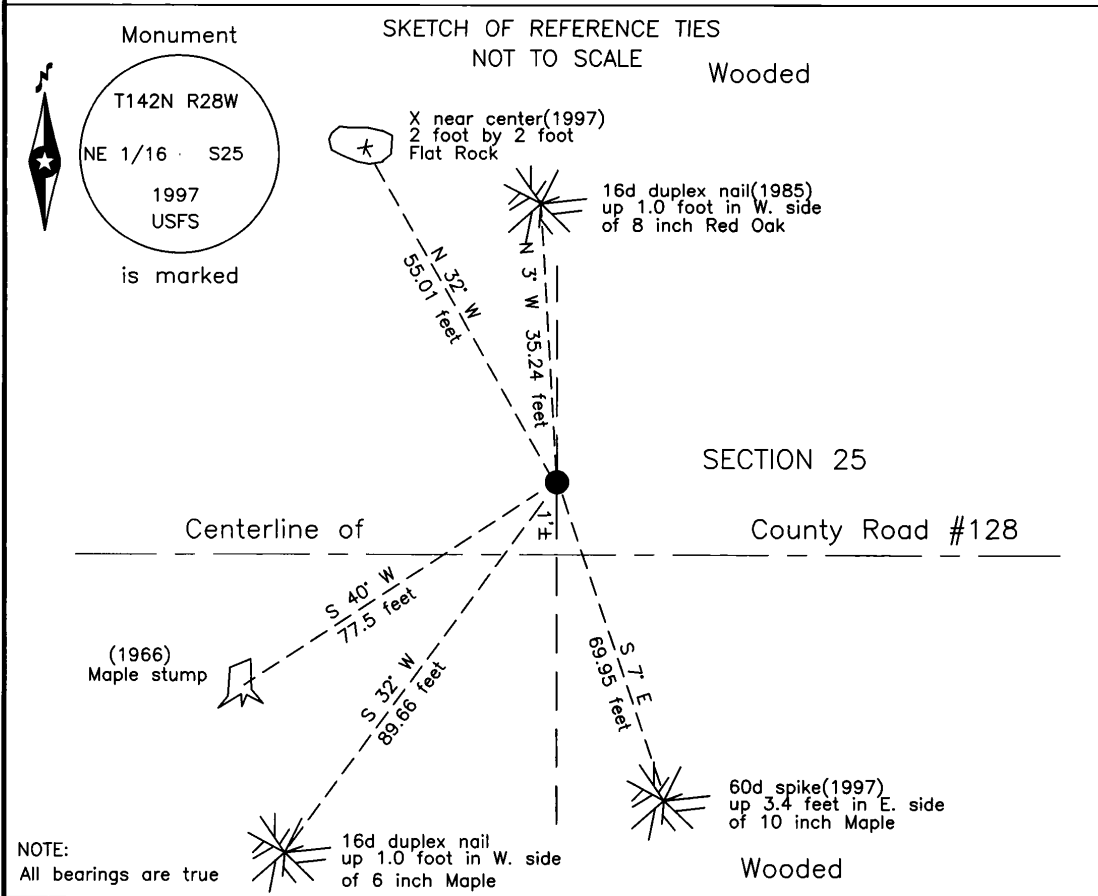
NE Sixteenth corner of Section 25, Township 142 N., Range 28 W., 5th P.M.
State of Minnesota, County of Cass

At the corner location shown on the sketch:

On 14 June 2018 found a 2 inch outside diameter iron pipe with USFS brass cap,
down 0.7 foot, 1 foot± north of centerline of County Road #128.

left monument as found lowered monument removed monument (explain)

On 13 Aug. 2020 placed a 2 inch outside diameter iron pipe with USFS brass cap,
down 0.5 foot, 1 foot± north of centerline of County Road #128.



NOTE:
All bearings are true

Statement of evidence relative to this corner location is on the back of this page.

I hereby certify that this survey, plan or report was prepared by me or under my direct supervision and that I am a duly Licensed Land Surveyor under the laws of the State of Minnesota.

Terry L. Freeman
Terry L. Freeman, Cass County Surveyor
Date 9/9/20 MN License No. 21367

Index No. S.0-24.0Statement of Evidence**Northeast Sixteenth corner of Section 25, Township 142 North, Range 28 West, 5th Principal Meridian.**

- Aug. 1919 E.G. Harrington, U.S. Cadastral Engineer GLO, Dependent Resurvey of the North Boundary and Subdivisional Lines Township 142 North, Range 28 West, state Set an iron post, 3 ft. long, 1 in. Diam., 26 ins in the ground, for the NE. 1/16 sec. cor. with brass cap". The bearing trees are listed as follows:
 10" Maple N 38° E 83 links (54.78 feet) 8" Ash S 18°45' W 35 links (23.10 feet)
 The above records are on file with the Minnesota Historical Society, St. Paul, Minnesota, copies are filed with the Cass County Highway Department, Surveyor's Office (CCHD/SO).
- Aug. 1919 E.B. Horst, LS 376, Deputy County Surveyor, Survey Record No. 435, Book C, page 344 and Ditch Shelf 5, Book 34, page 9, on file in the CCHD/SO, states "At Sta. 59317.0 U.S. I.M. N.E. 1/16 sec. cor. Wagon trail left 15 ft. N. 1/2 of Rt. Of way cleared."
- April 1952 H.J. Curo, LS 3417, Survey for W.C. Lebra, Curo Book 285, pages 38 and 39, on file in the CCHD/SO, state "We find IM bent we take it up straighten it up and put it back in same hole it came out of go E. work instrument on line between said IM and IM on shore of Boy Lake".
- Aug. 1966 R.F. Schneider, LS 5740, Certificate of Survey and notes for Harker, on file in the Northern Engineering & Consulting, Walker Office, copy on file in the CCHD/SO, indicates a GLO pipe in place at the subject corner and witnesses as follows:
 10" Maple S 38° W 77.2 feet 7" Red Oak N 45° W 45.9 feet
 12" Maple N 37° E 54.6 feet
- Jan. 1968 R.F. Schneider, LS 5740, Certificate of Survey, on file in the Northern Engineering & Consulting, Walker Office, copy on file in the CCHD/SO, indicates an iron pipe monument at the subject corner.
- Oct. 1982 G.H. Stevenson, LS 12684, Survey for Drennen, on file in the Northern Engineering & Consulting, Walker Office, copy on file in the CCHD/SO, indicates a U.S.G.L.O. Brass Cap Mon. at the subject corner.
- Aug. 1985 C.R Krause, technician, United States Department of Agriculture Forest Service(USFS), T 142N R 28 W, Book 1, page 50, on file in the USFS Cass Lake Office, indicates found GLO iron pipe, cap missing, down 6 inches in road, GLO witnesses gone, new witnesses as follows:
 11" Maple(1966) S 40° W 77.6 feet 4" Red Oak N 3° W 35.1 feet
- Nov. 1992 T.L. Freeman, LS 21367, Certificate of Survey for Rose, on file in the Northern Engineering & Consulting, Walker Office, copy on file in the CCHD/SO, indicates a monument found at the subject corner.
- July 1995 T.L. Freeman, LS 21367, Revised the 1966 Schneider Certificate of Survey for Harker, on file in the Northern Engineering & Consulting, Walker Office, copy on file in the CCHD/SO, which indicates an iron pipe monument at the subject corner.
- June 1997 C. Krause, technician, USFS, T 142N R 28 W, Book 1, page 50, on file in the USFS Cass Lake Office, states Replace GLO iron with 2 inch x 2 foot galvanized pipe with brass cap, 12 inches below County Road #128 surface, Magnet below monument and witnessed as follows:
 12" Maple(1966) S 40° W 77.57 feet 2'x 2' Rock N 32° W 55.01 feet
 9.5" Maple S 07° E 69.95 feet
- Sept. 2000 T.L. Freeman, LS 21367, Certificate of Survey for Kube, on file in the Northern Engineering & Consulting, Walker Office, copy on file in the CCHD/SO, indicates a GLO brass cap monument found at the subject corner.
- May 2005 R. Main, technician, USFS, T 142N R 28 W, Book 1, page 50, on file in the USFS Cass Lake Office, indicates Corner was located with Global Positioning System(GPS), in center of road, the 1966 Maple witness is a snag.
- June 2018 B. Hippen, technician, records of the CCHD/SO, prior to reconstruction of County Road #128, found USFS monument, down 0.7 foot, 1 foot, more or less, north of centerline of County Road #128, remove monument and witnessed as follows:
 Maple stump(1966) S 40° W 77.2 feet 8" Red Oak(1985) N 3° W 35.24 feet
 2'x 2' Rock(1997) N 32° W 55.01 feet 10" Maple(1997) S 7° E 69.95 feet
 6" Maple S 32° W 89.66 feet
- Aug. 2020 B. Hippen, technician, records of the CCHD/SO, reset the USFS monument, down 0.5 foot, 1 foot, more or less, north of centerline of County Road #128, witnesses from 2018 are all good.

The monument, recovered and established references for the position are shown on the face of this document.

Analysis of the recovered record data, field evidence and survey measurements, indicates that the monument recovered by the CCHD/SO in 2018 is the correct perpetuation of this corner.

County Coordinates (Cass County North)
Northing 205822.91
Easting 512875.55