



A000660535

OFFICE OF THE COUNTY RECORDER
CASS COUNTY, MINNESOTA
CERTIFIED, FILED, AND/OR
RECORDED ON

6/19/2020 10:28:34 AM

AS DOC #: A000660535
PAGES: 2
REC FEES: 0.00

KATHRYN M. NORBY
CASS COUNTY RECORDER
BY SF _____ Dep TX#: 162433

Index No. J.O-7.0

CERTIFICATE OF LOCATION OF GOVERNMENT CORNER

WITNESS TO NORTH QUARTER Corner of Section 17, Township 134, Range 31, 5TH P.M.

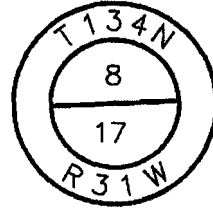
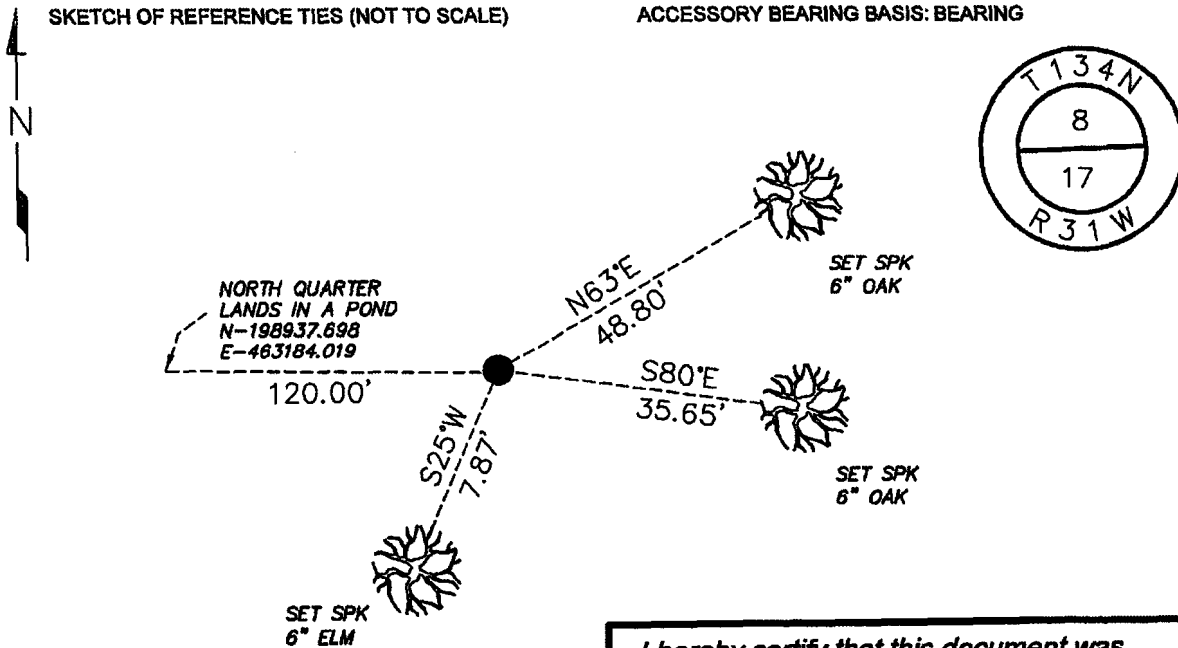
STATE OF MINNESOTA, County of CASS

At the location shown on the sketch:

- On _____ found _____
- left monument as found, lowered monument, removed monument (explain)
- On 4/14/2020 placed an 1/2 INCH CAPPED IRON PIPE 120' EAST OF NQ.

SKETCH OF REFERENCE TIES (NOT TO SCALE)

ACCESSORY BEARING BASIS: BEARING



I hereby certify that this document was prepared by me or under my direct supervision and that I am a duly Licensed Land Surveyor under the laws of the State of Minnesota

Paul Herkenhoff

PAUL HERKENHOFF

N= 198938.525 E= 463184.019

DATUM= CASS COUNTY SOUTH

NAD 83/96 ADJ.

US SURVEY FT.

Date 4/13/2020 License No. 45875

Statement of evidence relative to this corner is on back of page





Index No. J.0-7.0

Statement of Evidence:

Witness Corner to the North Quarter Corner of Section 17, Township 134, Range 31 West, 5th Principle Meridian, Cass County, Minnesota

1869 T.B Walker, General Land Office (GLO) Deputy Surveyer set a post for the original corner in the subdivision and noted the following accessories.

| | | |
|-------------|------|----------|
| 6" Tamarack | S67E | 42 links |
| 4" Tamarack | N69E | 58 links |

Record on file with the Minnesota Historical Society in St. Paul, MN and copies filed with the Cass County County Highway Department, Surveyors Office (CCHD/SO).

1915 N.D. Gorman set this corner proportionally. Filed in Book B, pages 440-495, also in Curo Book 96, page, 28.

Record on file with the Cass County County Highway Department, Surveyors Office (CCHD/SO).

2020 Lakes Area Surveying searched the area for all previous evidence. No evidence from previous surveys was found. The Corner falls in a large pond. This corner was set lost, which is the same method used in the 1915 Gorman survey. Distance to the northwest corner of Section 17 fit the 1915 Gorman distance within two tenths of a foot. A witness corner was set to reference this corner.

Analysis of the recovered record data, field evidence and survey measurements, indicates that the monument set by Lakes Area Surveying in 2020 is the accepted as a witness to this corner.