



A000660529

OFFICE OF THE COUNTY RECORDER
CASS COUNTY, MINNESOTA
CERTIFIED, FILED, AND/OR
RECORDED ON

6/19/2020 10:28:28 AM

AS DOC #: A000660529

PAGES: 2

REC FEES: 0.00

KATHRYN M. NORBY
CASS COUNTY RECORDER

BY SF _____ Dep TX#: 162433

Index No. X.0-9.0

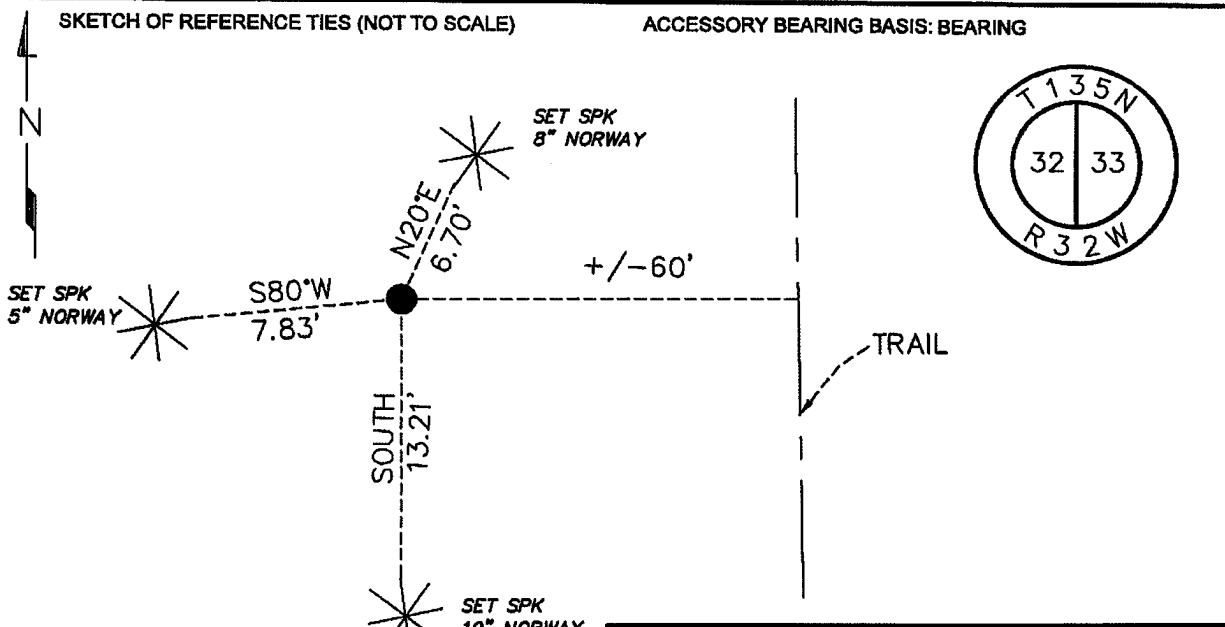
CERTIFICATE OF LOCATION OF GOVERNMENT CORNER

EAST QUARTER Corner of Section 32, Township 135, Range 32, 5TH P.M.

STATE OF MINNESOTA, County of CASS

At the location shown on the sketch:

- On _____ found _____
- left monument as found, lowered monument, removed monument (explain)
- On 4/2/2020 placed an 1/2 INCH CAPPED IRON PIPE



I hereby certify that this document was prepared by me or under my direct supervision and that I am a duly Licensed Land Surveyor under the laws of the State of Minnesota

Paul Herkenhoff

PAUL HERKENHOFF

Date 4/13/2020 License No. 45875

N= 211878.54 E= 431619.30

DATUM= CASS COUNTY SOUTH

NAD 83/96 ADJ. US SURVEY FT.

Statement of evidence relative to this corner is on back of page.

Page 1 of 2
A000660529



Index No. X.0-9.0

Statement of Evidence:

East Quarter Corner of Section 32, Township 135, Range 32 West, 5th Principle Meridian, Cass County, Minnesota

1866 Oscar E. Garrison, General Land Office (GLO) Deputy Surveyers set a post for the original corner in the subdivision and noted the following accessories.

10" Yellow Pine	N57W	127 links
12" Black Pine	S58E	240 links

Record on file with the Minnesota Historical Society in St. Paul, MN and copies filed with the Cass County County Highway Department, Surveyors Office (CCHD/SO).

2020 Lakes Area Surveying searched the area for all previous evidence. No evidence from previous surveys was found. This corner was set at a lost position between the northeast corner of Section 32 and the southeast corner of Section 32. This location is accepted as being the best available evidence for this corner.

Analysis of the recovered record data, field evidence and survey measurements, indicates that the monument set by Lakes Area Surveying in 2020 is the accepted location of this corner.