

Page 1 of 2
A000659270



A000659270
OFFICE OF THE COUNTY RECORDER
CASS COUNTY, MINNESOTA
CERTIFIED, FILED, AND/OR
RECORDED ON
 5/8/2020 10:26:25 AM
 AS DOC #: A000659270
 PAGES: 2
 REC FEES: 0.00
KATHRYN M. NORBY
CASS COUNTY RECORDER
 BY SF Dep TX#: 161401

Twp 136 Rge 29 Index No. J.0-03.0

CERTIFICATE OF LOCATION OF GOVERNMENT CORNER

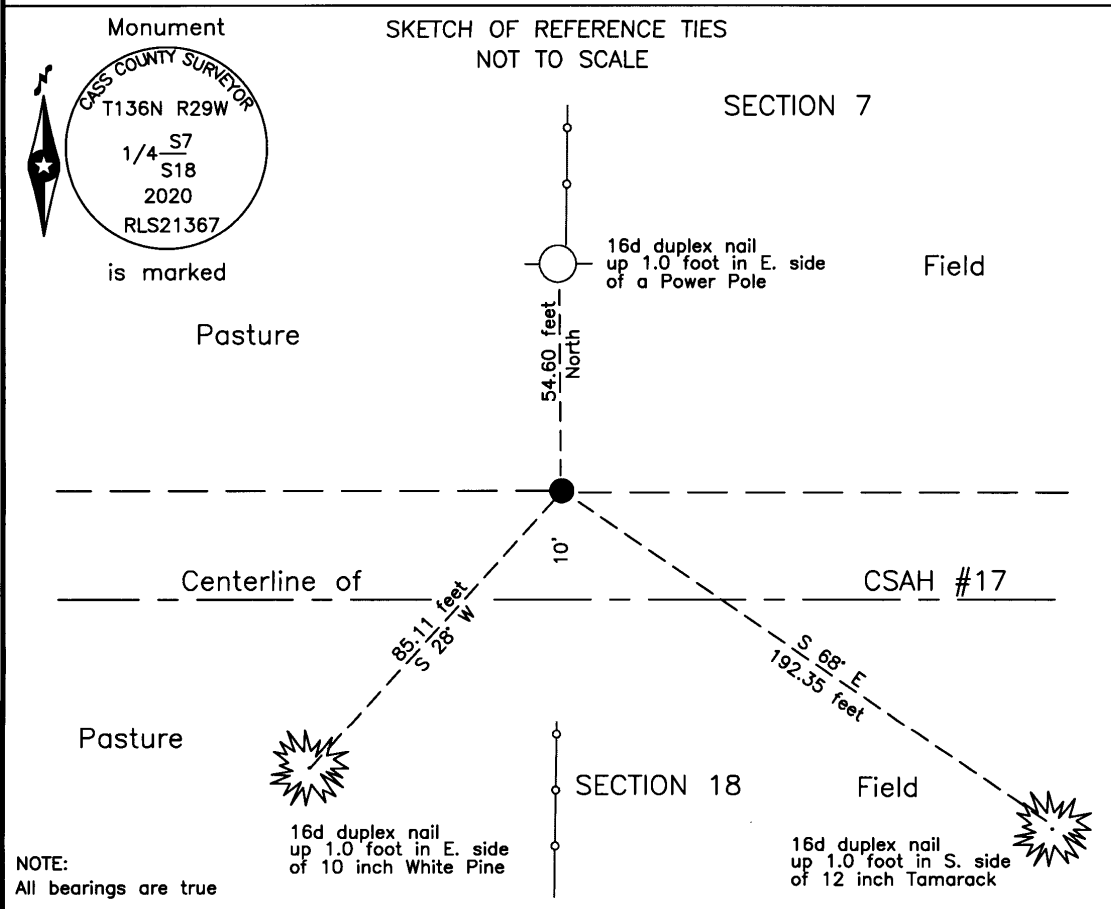
North Quarter corner of Section 18, Township 136 N., Range 29 W., 5th P.M.
 State of Minnesota, County of Cass

At the corner location shown on the sketch:

On 24 Sept 2019 found a 2 inch outside diameter iron pipe, flush, 10 feet±
north of centerline CSAH #17, lowered monument 1.2 feet.

left monument as found lowered monument removed monument (explain)

On 30 April 2020 placed an 1 inch by 24 inch aluminum tube with aluminum cap,
down 0.05 foot, 8.5 feet north of new centerline CSAH #17.



NOTE:
All bearings are true

Statement of evidence relative to this corner location is on the back of this page.

I hereby certify that this survey, plan or report was prepared by me or under my direct supervision and that I am a duly Licensed Land Surveyor under the laws of the State of Minnesota.

Terry L. Freeman
 Terry L. Freeman, Cass County Surveyor
 Date 5/6/20 MN License No. 21367



Statement of Evidence

North Quarter corner Section 18, Township 136 North, Range 29 West, 5th Principal Meridian.

- Dec. Wm.P. Allen, General Land Office (GLO) Deputy Surveyor, in the notes for the subdivision of Township 136 North, 1870 Range 29 West, set a post for the original corner and referenced it as follows:
28" W. Pine S 32° W 103 links (67.98 feet) 7" B. Pine N 59° E 110 links (72.60 feet)
The above record is on file with the Minnesota Historical Society in St. Paul, Minnesota, copies are filed with the Cass County Highway Department, Surveyor's Office (CCHD/SO).
- Nov. E.B. Horst, LS 376, Survey Record #306, Book B, page 337 and Curo Book 84, page 9, on file in the CCHD/SO, 1916 lists GLO witnesses and states "N.E. B.T. has been cleared away in sec 7 stump of S.W. B.T. still remains about 18 inches high with part of B.T. still plain from this I set a 2 x 48 in. I.M. and remark old stump". The corner is in the center of East to West graded road, witnesses as follows:
W. Pine stump(GLO) S 33° W 67.98 feet Fence Post North 21.60 feet
- Jan. E.B. Horst, LS 376, Curo Book 64, pages 75 and 77, on file in the CCHD/SO, states "I send a man to ¼ cor. 1917 I.M. between secs 7 & 18."
- March E.B. Horst, LS 376, Survey Record #338, Book B, page 503 and Curo Book 62, page 64, on file in the CCHD/SO, 1917 states "at 2645.7 quarter corner between sections 7 and 18."
- July J.W. Curo, LS 1428, Curo file 110, on file in the CCHD/SO, a worksheet in this file indicates a crook at this corner and a distance of 2524.5 feet west to the northwest corner of section 18 and 2645.7 feet east to the northeast corner of section 18. 1940
- March D. Cole, Cass County Engineer, Project S.P. 11-509-01, on file in the CCHD, indicates the corner assumed at 1951 PI station 131+16.9 on fence lines north and south and witnesses the PI as follows:
Chinese Elm NW 61.6 feet Fence Post NE 70.4 feet
- March B. Hippen, technician, records of the CCHD/SO, found a 2 inch outside diameter iron pipe, flush, 10 feet, more or 2014 less, north of centerline of CSAH #17, on fence lines, north and south.
- Sept. B. Hippen, technician, records of the CCHD/SO, prior to reconstruction of CSAH #17, a 2 inch outside diameter 2019 iron pipe, flush, 10 feet, more or less, north of centerline of CSAH #17, on fence lines, north and south. Lowered the pipe, 1.2 feet and witnessed as follows:
12" Tamarack S 68° E 192.35 feet 10" White Pine S 28° E 85.11 feet
Power Pole North 54.60 feet
- April B. Hippen, technician, records of the CCHD/SO, set an aluminum Cass County monument over the recovered 2020 iron pipe after County Road construction was completed, down 0.05 foot, 10 feet, more or less, north of new centerline of CSAH #17.

The recovered and established references for the position are shown on the face of this document.

Analysis of the recovered record data, field evidence and survey measurements, indicates that the monument recovered by the CCHD/SO in 2019 is the correct perpetuation of this corner.

County Coordinates (Cass County South)

Northing 262604.89

Easting 520949.42