

Page 1 of 2
A000657764

I hereby certify that this survey, plan, or report was prepared by me or under my direct supervision, and that I am a duly Licensed Land Surveyor under the laws of the State of Minnesota. I further certify that this certificate of location of government corner is correct and complete to the best of my knowledge and belief.

Signature: James Kramer
James Kramer

Date: 1-27-2020
Reg. No. 23668



A000657764

OFFICE OF THE COUNTY RECORDER
CASS COUNTY, MINNESOTA
CERTIFIED, FILED, AND/OR
RECORDED ON

2/27/2020 10:32:12 AM

AS DOC #: A000657764

PAGES: 2

REC FEES: 0.00

KATHRYN M. NORBY
CASS COUNTY RECORDER

BY NG Dep TX#: 160100

SKETCH OF REFERENCE TIES

(not to scale - bearings are magnetic)
Ties are measured to center of monument unless otherwise noted

UNITS = Metric English

NAD 1983/1996 CASS COUNTY NORTH ZONE COORDINATES
N = 113961.510 E = 468527.024

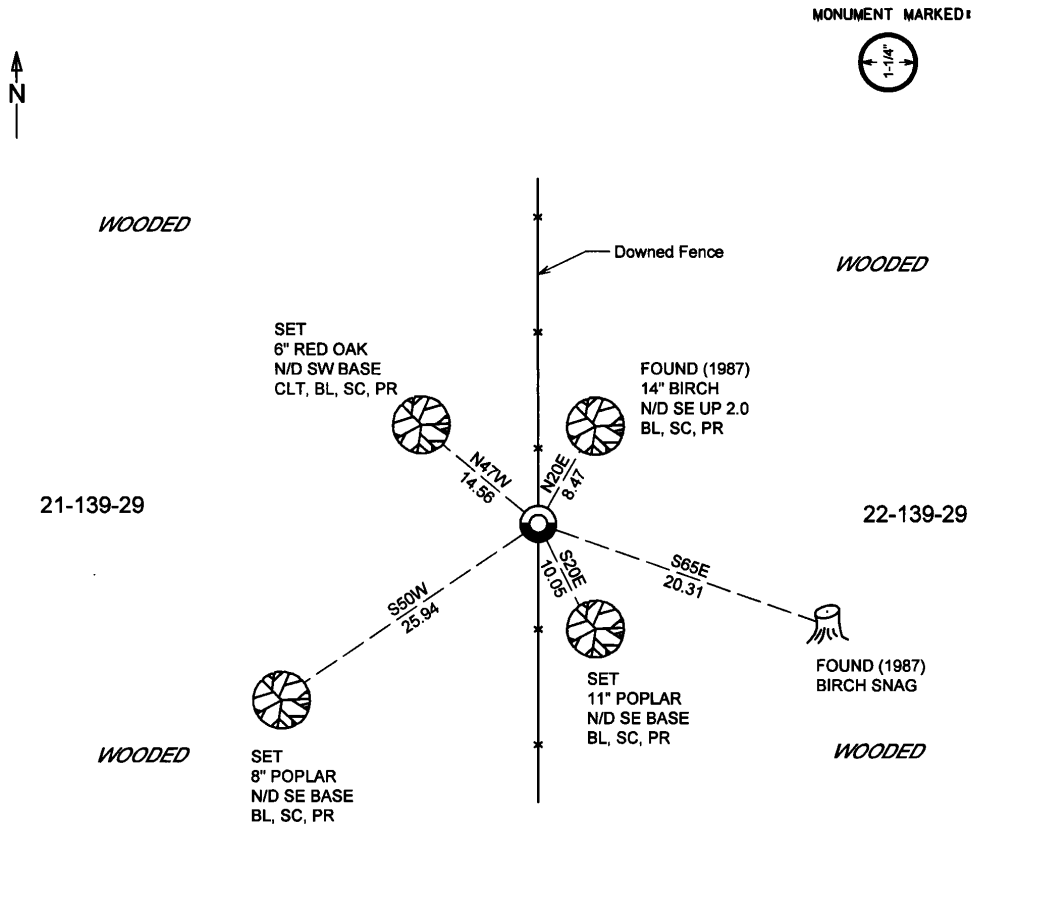
CERTIFICATE OF LOCATION OF GOVERNMENT CORNER

INDEX NO. P.0-13.0, East Quarter CORNER OF SECTION 21, TOWNSHIP 139, RANGE 29, STATE OF MINNESOTA, COUNTY OF CASS.

AT THE CORNER LOCATION SHOWN ON THE SKETCH:

- ON 08-21-2019 FOUND A(N) 1-1/4" Iron pipe, up 2.2
- LEFT MONUMENT AS FOUND, LOWERED MONUMENT, REMOVED MONUMENT (EXPLAIN)
- ON _____ DATE _____ PLACED A(N) _____

SKETCH OF REFERENCE TIES



MONUMENT MARKED:



BL = Blazed
SC = Scribed
PR = Painted Red
CLT = Corner Location Tag

Coordinates derived by RTK GPS (survey grade)

KLD
1120 Industrial Park Road SW
Brainerd, MN 56011
218-829-5333

KRAMER LEAS DELEO
SURVEYING - ENGINEERING - PLANNING
BRainerd ST. CLOUD

STATEMENT OF EVIDENCE RELATIVE TO THIS CORNER LOCATION IS ON THE BACK OF THE PAGE



STATEMENT OF EVIDENCE:

EAST QUARTER CORNER OF SECTION 21,
TOWNSHIP 139 NORTH, RANGE 29 WEST OF THE
5TH PRINCIPAL MERIDIAN CASS COUNTY,
MINNESOTA

1865 Wright and Walker ran the original subdivision for Township 139 North Range 29 West. A post was set to mark the corner and the following bearing ties were set. Information on file in the Minnesota Historical Society, St. Paul MN. Copies on file in Cass County Highway Department/Surveyors Office (CCHD/SO).

<u>Tie</u>	<u>Bearing</u>	<u>Distance</u>
8" Black Pine	S40E	20 links (13.20')
20" Yellow Pine	S27W	38 links (25.08')

1908 John Curo began traverse from the true corner. Information on file in Curo book 95 page 44 in CCHD/SO.

1971 D. Coulter LS 5852 completed the Plat of Smith Estates indicate an Iron Monument marking the corner. Cass County Recorder Document Number 201513.

1987 Stevenson and Associates recovered a 1 1/4" Iron Pipe marking the corner on an old fence line. The following bearing ties were noted. Information on file in Curo file 1957 in CCHD/SO.

<u>Tie</u>	<u>Bearing</u>	<u>Distance</u>
8" Birch	N20E	8.47'
12" Birch	S65E	20.31'

2017 Cynthia M. Hidde RLS 44881 completed a survey in Section 21, Township 139 North, Range 29 West. The Certificate of Survey indicates a recovered Iron Monument marking the East Quarter Corner of Section 21. Information on file in CCHD/SO.

2019 Crews at Kramer Leas Deleo recovered a 1 1/4" Iron Pipe marking the corner, the recovered pipe is believed to be the pipe that was set in 1971. The following bearing ties were recovered.

<u>Tie</u>	<u>Bearing</u>	<u>Distance</u>
14" Birch	N20E	8.47'
Birch Snag	S65E	20.31'

The following bearing ties were set.

<u>Tie</u>	<u>Bearing</u>	<u>Distance</u>
6" Red Oak	N47W	14.56'
8" Poplar	S50W	25.94'
11" Poplar	S20E	10.05'

For additional information contact:
Kramer Leas Deleo PC
1120 Industrial Park Road Southwest
Brainerd, MN. 56401
218-829-5333