

Page 1 of 2 A000657757

I hereby certify that this survey, plan, or report was prepared by me or under my direct supervision, and that I am a duly Licensed Land Surveyor under the laws of the State of Minnesota. I further certify that this certificate of location of government corner is correct and complete to the best of my knowledge and belief.

Signature: James Kramer  
James Kramer

Date: 1-27-2020  
Reg. No. 23668



**A000657757**  
OFFICE OF THE COUNTY RECORDER  
CASS COUNTY, MINNESOTA  
CERTIFIED, FILED, AND/OR  
RECORDED ON  
2/27/2020 10:32:05 AM  
AS DOC #: A000657757  
PAGES: 2  
REC FEES: 0.00  
KATHRYN M. NORBY  
CASS COUNTY RECORDER  
BY NG Dep TX#: 160100

**SKETCH OF REFERENCE TIES**  
(not to scale - bearings are magnetic)  
Ties are measured to center of monument unless otherwise noted

UNITS =  Metric  English

NAD 1983/1996 CASS COUNTY COORDINATES (SOUTH ZONE)  
N= 212064.461 E= 452722.780

**CERTIFICATE OF LOCATION OF GOVERNMENT CORNER**

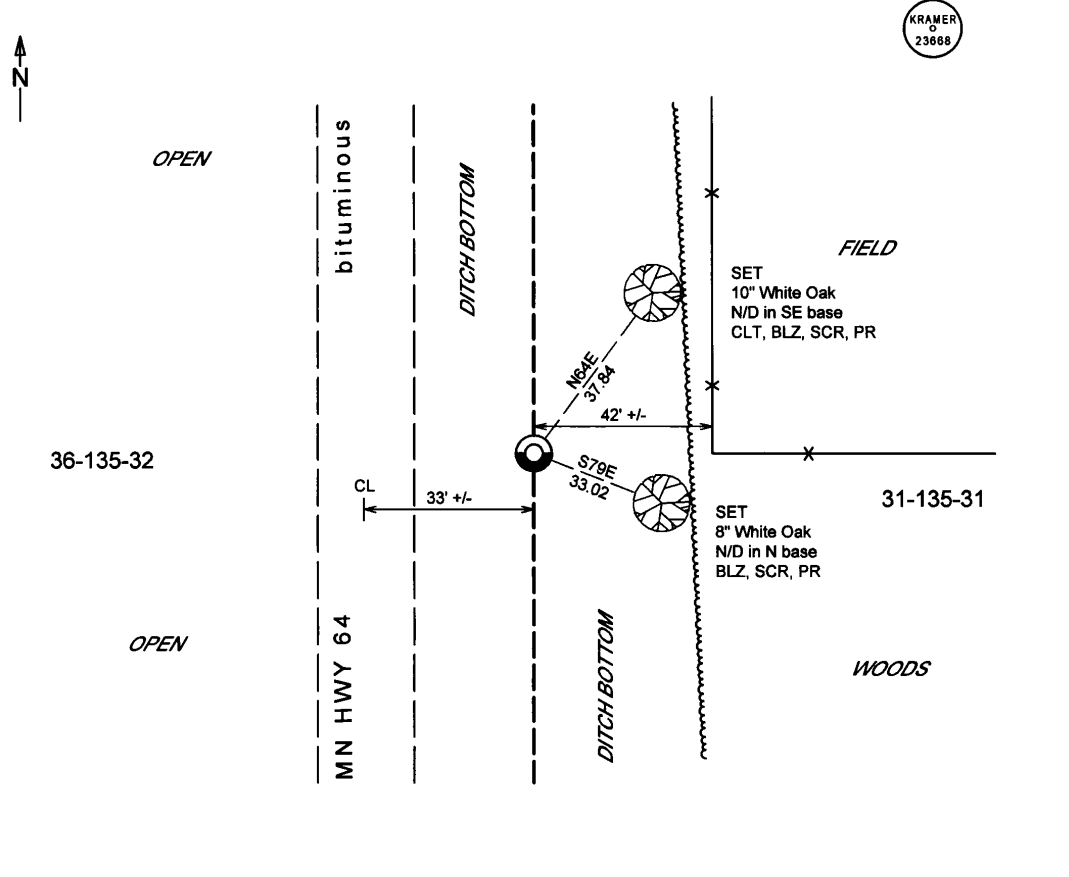
INDEX NO. X-0-25.0, East Quarter CORNER OF SECTION 36, TOWNSHIP 135, RANGE 32,  
STATE OF MINNESOTA, COUNTY OF CASS

AT THE CORNER LOCATION SHOWN ON THE SKETCH:

- ON 4-24-2017 FOUND A(N) Nothing
- LEFT MONUMENT AS FOUND,  LOWERED MONUMENT,  REMOVED MONUMENT (EXPLAIN)
- ON 4-24-2017 PLACED A(N) 1/2"x 30" iron pipe with RLS cap stamped "KRAMER 23668" down 0.2' at the position shown on MN/DOT ROW map 31-67\_006

**SKETCH OF REFERENCE TIES**

MONUMENT MARKED:



Coordinates derived by RTK GPS (survey grade)

**KLD**  
1120 Industrial Park Road SW  
Brainerd, MN 56401  
218-829-8333  
KRAMER LEAS DELEO  
SURVEYING • ENGINEERING • PLANNING  
BRAINERD ST. CLOUD



Index No. X.0-25.0

**Statement of Evidence**

***East Quarter Corner Section 36, Township 135 North, Range 32 West,  
Cass County, Minnesota***

**1858** The Original Survey by the United States Government Land Office was conducted by Harry Mellen. A wood post was set to mark the corner with the following bearing ties. Information on file in the Minnesota Historical Society, St. Paul MN. Copies on file in Cass County Highway Department/Surveyors Office (CCHD/SO).

<u>Tie</u>	<u>Bearing</u>	<u>Distance</u>
12" Aspen	S89E	14 links (9.24 feet)
8" Oak	N89W	20 links (13.20 feet)

**2017** Crews at Kramer Leas Deleo searched for original corner evidence and found nothing. Crew then placed a ½" X 30" Iron Pipe with plastic cap stamped "KRAMER 23668" at the corner location. The following bearing ties were also set.

<u>Tie</u>	<u>Bearing</u>	<u>Distance</u>
10" White Oak	N64E	37.84 feet
8" White Oak	S79E	33.02 feet