



A000656374

OFFICE OF THE COUNTY RECORDER  
CASS COUNTY, MINNESOTA  
CERTIFIED, FILED, AND/OR  
RECORDED ON

12/23/2019 11:52:46 AM

AS DOC #: A000656374

PAGES: 2

REC FEES: 0.00

KATHRYN M. NORBY  
CASS COUNTY RECORDER

BY NG Dep TX#: 158821

### CERTIFICATE OF LOCATION OF GOVERNMENT CORNER

I hereby certify that this survey, plan, or report was prepared by me or under my direct supervision and that I am a duly Licensed Land Surveyor under the laws of the State of Minnesota.

*Patrick A. Trotter*

Patrick A. Trotter

Date: 12-11-2019 License No: 41002  
PLS# 41002

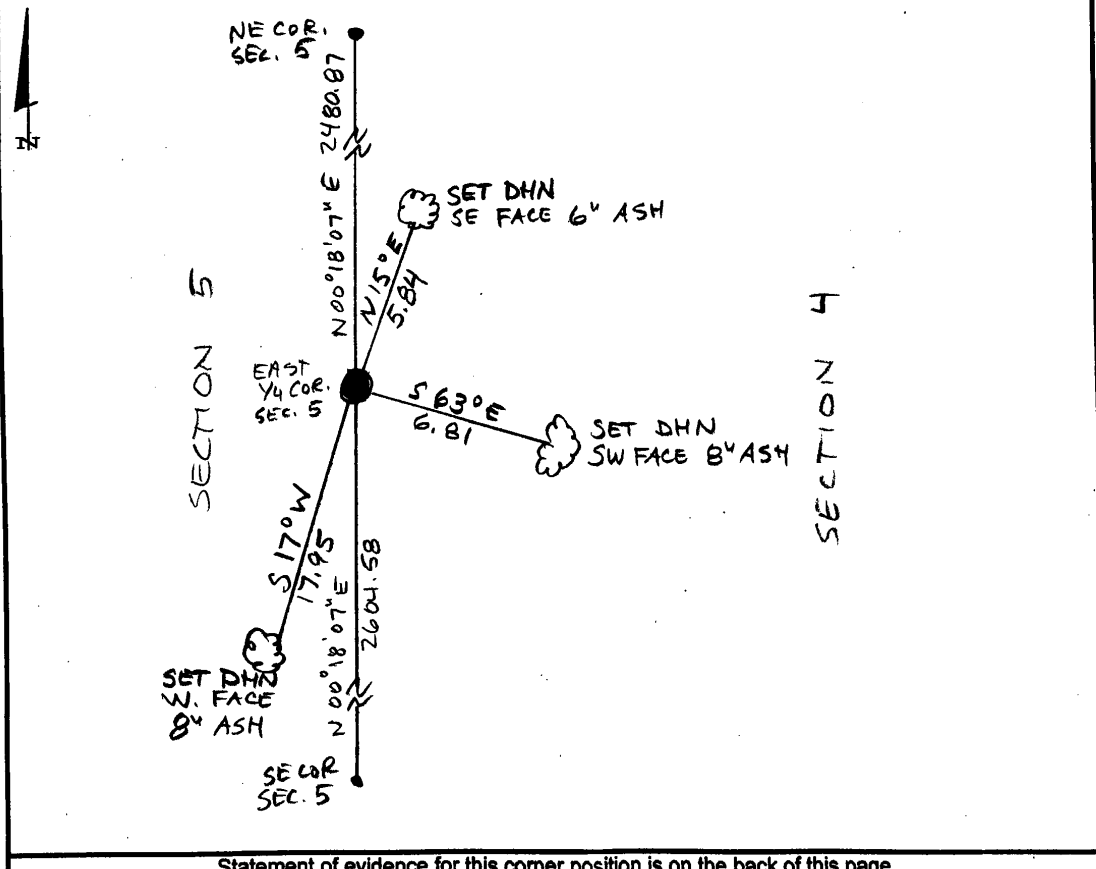
East Quarter Corner of Section 5, Township 135 N, Range 31 W, 5<sup>th</sup> P.M.

- On \_\_\_\_\_ found a \_\_\_\_\_
- left monument as found,  lowered monument,  removed monument (explain)
- On 11-26-2019 placed a 1/2" x 18" iron pipe with plastic cap stamped "RLS 41002", up 0<sup>1</sup> foot.

### SKETCH OF REFERENCE TIES

Not to Scale

Corner Index:  
C.0-9.0





**C.0-9.0**

**Statement of Evidence**

**East Quarter corner, Section 5, Township 135 North, Range 31  
West, 5<sup>th</sup> Principal Meridian, Cass County, Minnesota**

1870 – R. Cronk, General Land Office (GLO) Surveyor originally established this corner position while surveying the interior subdivision lines of Township 135 North, Range 31 West. A wood post was set to mark the corner position with the following witnesses:

6” Spruce    N 49° E    12 links  
6” Spruce    N 61° W    9 links

Information on file in the MN Historical Society, St. Paul, MN. Copies on file in the Cass County Highway Department/Surveyors Office (CCHD/SO).

1902 – Township road order shows no survey.  
Information on file in the CCHD/SO.

2019 – Patrick A. Trottier, RLS 41002 finds no evidence of corner and determines position by single proportion method between established NE and SE corners of Section 5. Sets 1/2" x 18" iron pipe with plastic cap stamped "RLS 41002" as the perpetuation of the corner and establishes the witnesses as shown on the face of this drawing.

County Coordinates (Cass County South NAD83/96)  
Northing    238546.88  
Easting    465591.81